

PORT IDENTIFICATION  
ABSCHLUSSEZEICHNUNG  
REFERENCE D'ORIFICE  
DESIGNAZIONE DELL'ORIFIZIO

MF MASTERCYLINDER FRONT AXLE  
HAUPTZYLINDER VORDERACHSE  
MAITRE CYLINDRE ESSIEU AVANT  
CILINDRO PRINCIPALE ASSE ANTERIORE

MR MASTERCYLINDER REAR AXLE  
HAUPTZYLINDER HINTERACHSE  
MAITRE CYLINDRE ESSIEU ARRIERE  
CILINDRO PRINCIPALE ASSE POSTERIORE

RL REAR AXLE - LEFT  
HINTERACHSE - LINKS  
ESSIEU ARRIERE - A GAUCHE  
ASSE POSTERIORE - A SINISTRA

RR REAR AXLE - RIGHT  
HINTERACHSE - RECHTS  
ESSIEU ARRIERE - A DROITE  
ASSE POSTERIORE - DESTRA

FL FRONT AXLE - LEFT  
VORDERACHSE - LINKS  
ESSIEU AVANT - A GAUCHE  
ASSE ANTERIORE - A SINISTRA

FR FRONT AXLE - RIGHT  
VORDERACHSE - RECHTS  
ESSIEU AVANT - A DROITE  
ASSE ANTERIORE - DESTRA

TECHNICAL DATA  
TECHISCHE DATEN  
CARACTERISTIQUES TECHNIQUES  
CARATTERISTICHE TECNICHE

WORKING MEDIUM : BRAKE FLUID DOT 3, DOT 4, DOT 5.1 - FMVSS 116  
BETRIEBSMEDIUM : BREMSFLÜSSIGKEIT DOT 3, DOT 4, DOT 5.1 - FMVSS 116  
FLUIDE D'UTILISATION : LIQUIDE DE FREIN DOT 3, DOT 4, DOT 5.1 - FMVSS 116  
FLUIDO DI ESERCIZIO : LIQUIDO PER FRENI DOT 3, DOT 4, DOT 5.1 - FMVSS 116

AMBIENT TEMPERATURE: -40°C...+85°C  
UMGEBUNGSTEMPERATUR: -40°C...+85°C  
TEMPERATURE AMBIANTE:  
TEMPERATURA AMBIENTE:

TEMPERATURE RANGE OF MEDIUM:  
DRUCKMITTELTEMPERATURBEREICH: -40°C...+85°C  
PLAGE DE TEMPERATURE DU FLUIDE:  
GAMMA DI TEMPERATURA DEL FLUIDO:

NOMINAL VOLTAGE : 12 +2.4/-1.2 VDC  
NENNSPANNUNG :  
TENSION NOMINALE :  
TENSIONE NOMINALE:

TYPE OF PROTECTION ACC : IP 6K9K  
SCHUTZART :  
MODE DE PROTECTION SUIVANT :  
TIPO DI PROTEZIONE SECONDO:

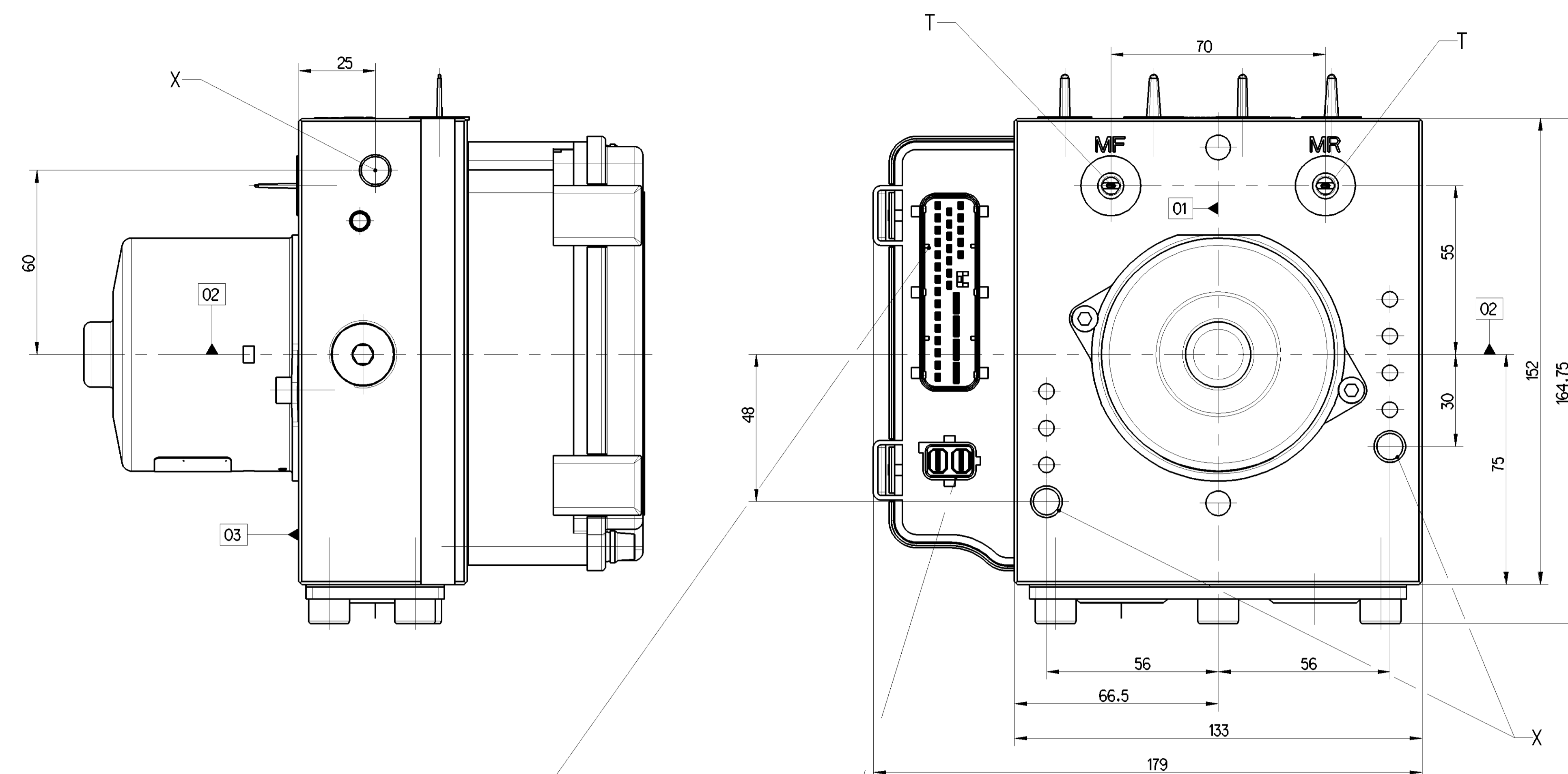
SURFACE PROTECTION: STEEL PARTS ACC. TO JED-256 - (Cr6free)  
OBERFLÄCHENSCHUTZ: STAHLTEILE NACH JED-256 - (Cr6frei)  
PROTECTION DE SURFACE: PIÉCES EN ACIER SELON JED-256 -  
PROTEZIONE SUPERFICI : PEZZI DI ACCIAIO CONFORME A JED-256 -

VOLUME PER AXLE  
VOLUMEN PRO AXHSE : 3 cm  
VOLUME PAR ESSIEU  
VOLUME A ASSE

PARAMETERSET : 13  
PARAMETERSATZ :  
SET DE PARAMETRES :  
SET DI PARAMETRI :

SOFTWARE VERSION : HECM001  
SOFTWAREVERSION :  
VERSION DU SOFTWARE :  
VERSIONE DEL SOFTWARE :

(K) TYPE - APPROVAL ACCORDING TO : 10R-056232  
TYPE - GENEHMIGUNG NACH :



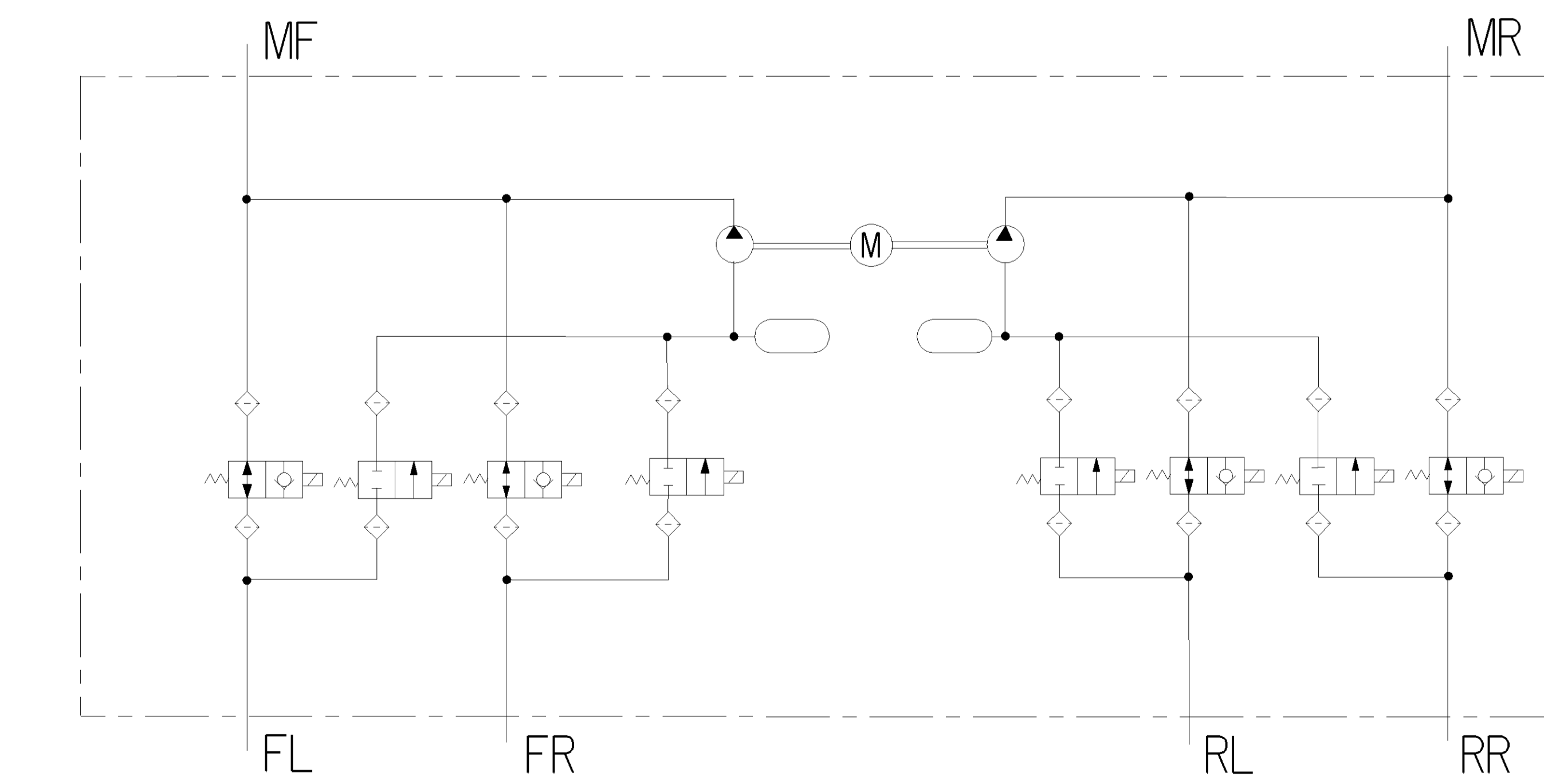
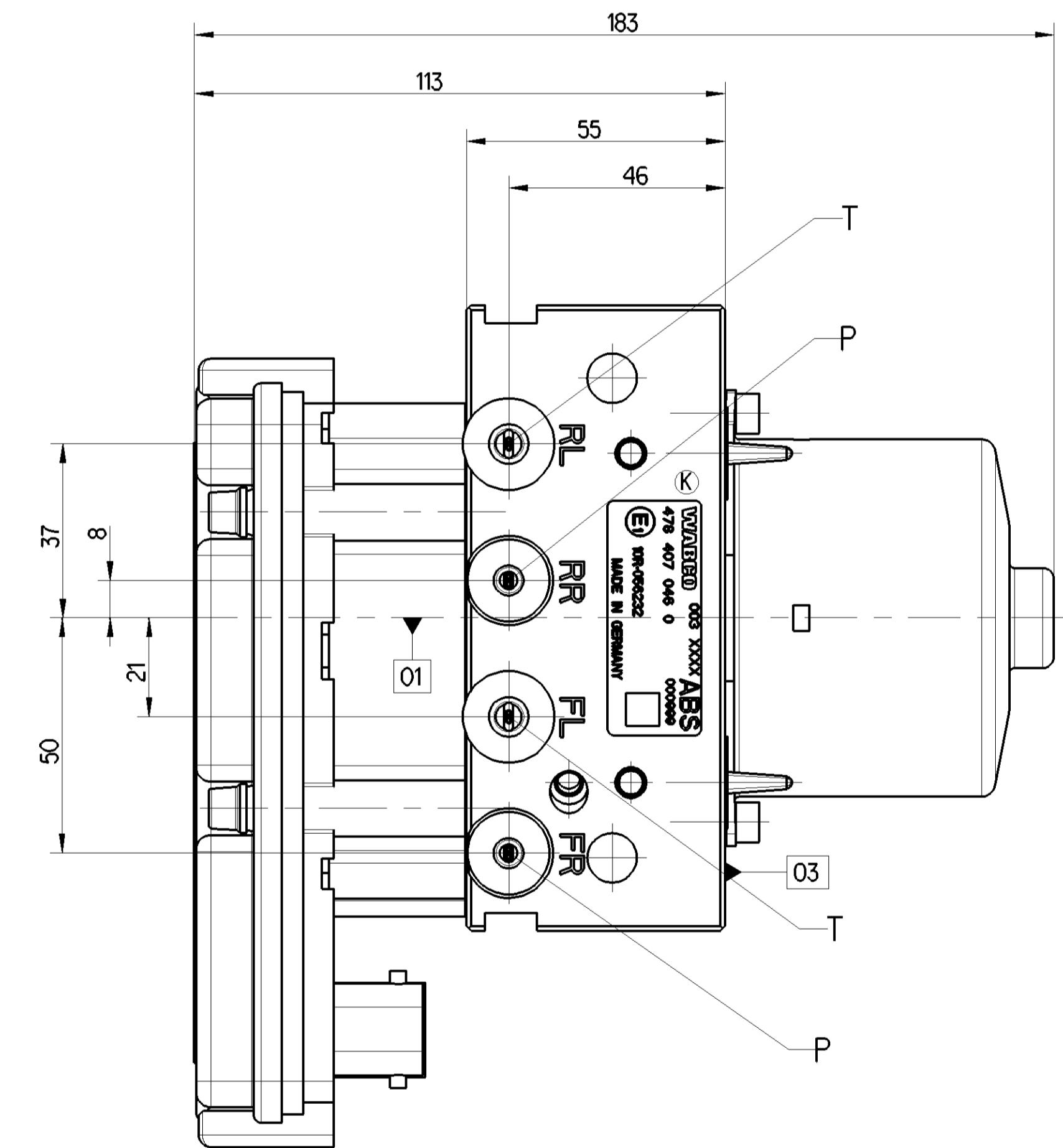
DIMENSIONING MADE ON THE BASIS OF THE AMP REFERENCE NUMBER:  
CASING ASSEMBLY ACCORDING TO DRAWING C-208-15556 REV.5.2  
CODING: NUMERO 0  
MATCHING THE MATING CONNECTOR ACCORDING TO DRAWING C-953042; AMP-Ref. 1-953042-6

MASSLICHE AUSFÜHRUNG ANHAND FOLGENDER AMP-SACHNUMMERN:  
GEHÄUSEBAUGRUPPE NACH ZEICHNUNG C-208-15556 REV.5.2  
KODIERUNG: NUMERO 0  
PASSEND ZU GEGENSTECKER NACH ZEICHNUNG C-953042; AMP-Ref. 1-953042-6

DIMENSIONNEMENT FAIT A L'AIDE DU NUMERO DE REFERENCE AMP:  
SOUS-ENSEMBLE DE BOITE SUIVANT PLAN C-208-15556 REV.5.2  
CODIFICATION: NUMERO 0  
ASSORTI AU PENDANT SUIVANT PLAN C-953042; AMP-Ref. 1-953042-6

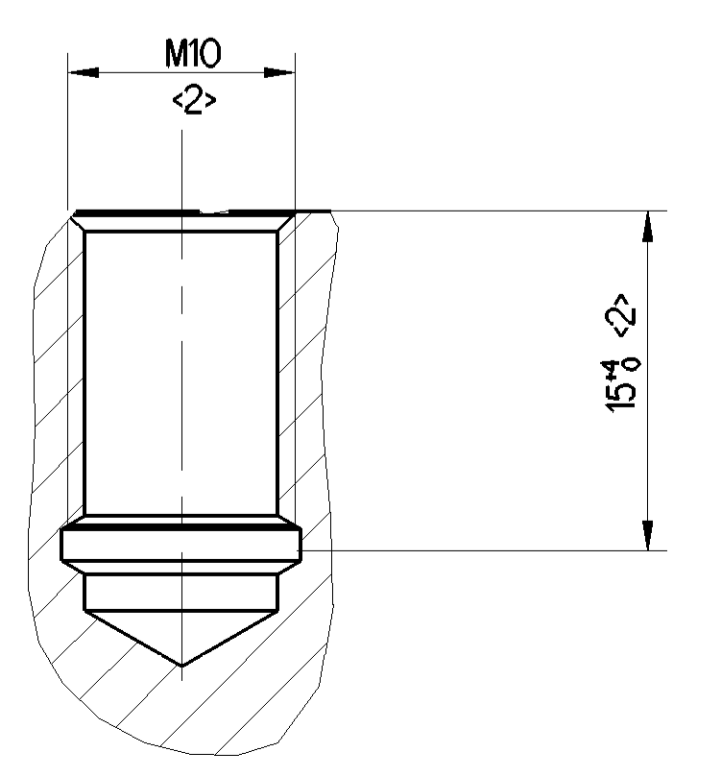
DIMENSIONAMENTO FATTO SULLA BASE DI NUMERO DI RIFERIMENTO AMP:  
SOTTOGRUPPO DI CORPO SECONDO DISEGNO C-208-15556 REV.5.2  
CODICE: NUMERO 0  
ADATTO AL CONNETTORE CORRISPONDENTE SECONDO DISEGNO C-953042; AMP-Ref. 1-953042-6

CONNECTION NOT FUNCTIONAL AND PLUGGED  
NICHT FUNKTIONSFÄHIG UND VERSCHLOSSEN  
FERMÉ  
CHIUSO

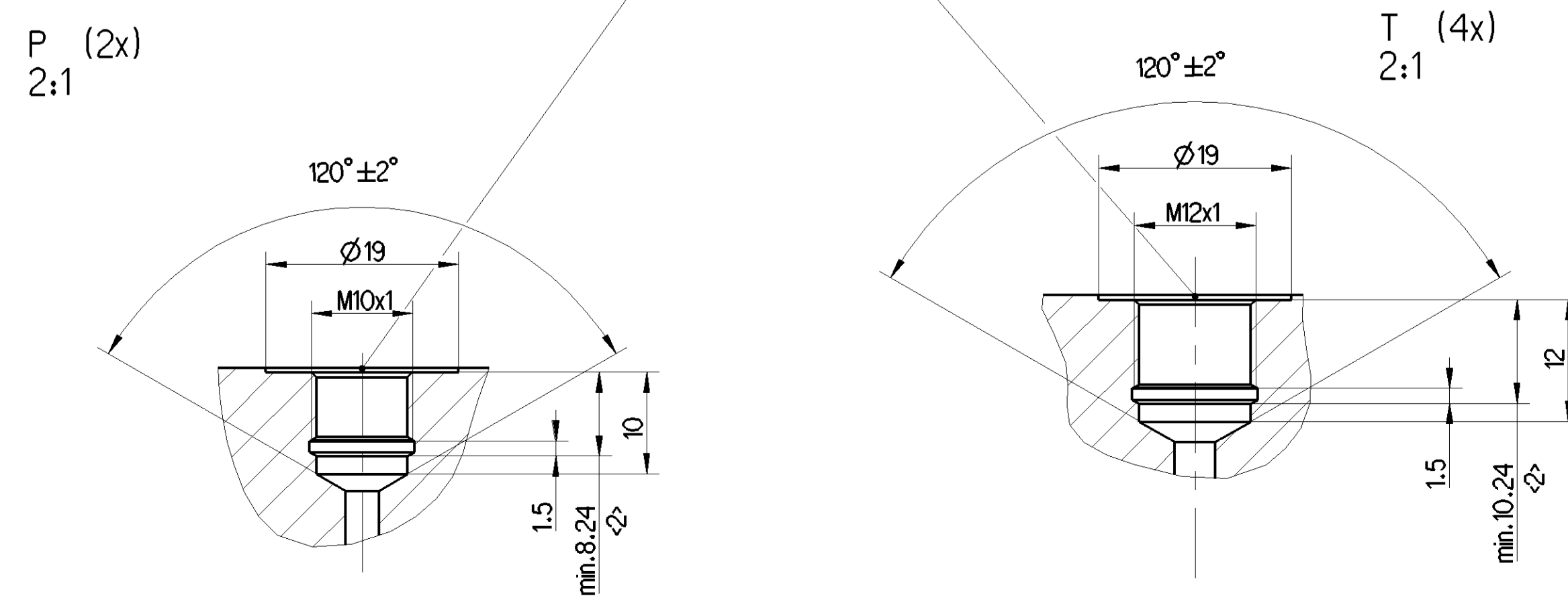
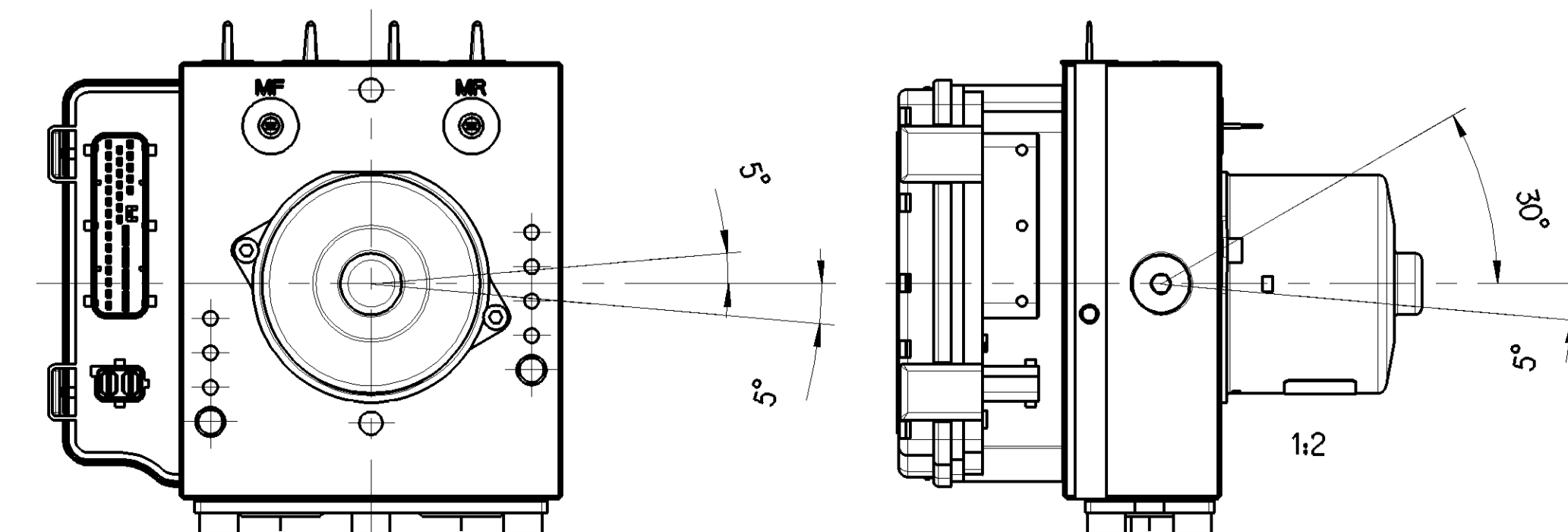


01, 02, 03 = DATUM PLANE  
BEZUGSEBENE  
PLAN DE REFERENCE  
PLANO DI RIFERIMENTO

X 5:1  
BORE IN THE FIXATION  
BEFESTIGUNGSBOHRUNGEN : M=30+3 Nm  
ORIFICE DANS LA FIXATION  
ORIFIZIO NEL FISSAGGIO



INSTALLATION POSITION  
EINBAULAGE  
POSITION D'INSTALLATION  
POSIZIONE DI MONTAGGIO



LOCKED ROTOR TORQUE FOR BRAKE LINES  
ANZUGSMOMENT FUER BREMSROHR : M=15+3Nm  
COUPLE A ROTOR BLOQUE

General Specifications JED-354-0		Copyright WABCO®		<b>WABCO</b>	
Further Technical Data		Date: 2019-03-21		Sheet: 006 of 006	
Doc. Code: 478 407 046 0		Title: Modulator		Revision: 1	
Class: 1		Size: 4.9		Date of 1st issue: 2009-06-21	
Range of Nominal Dimensions (L x Ø in mm)		Scale: 1:1		Doc. Code: 478 407 046 0	
Free	0.5 - 1.0 - 1.5 - 2.0	4.9		Langage: ML	
Medium	1.0 - 2.0 - 3.0 - 4.0	1:1		Sheet: 006 of 006	
Course	2.0 - 3.5 - 5.0 - 6.5	A 0		Drawn by: 5496	
Tapped Holes acc. to ISO 9001		Checked by: 5496		Approved by: 5496	