

PORT IDENTIFICATION
ABSCHLUSSBEZEICHNUNG
REFERENCE D'ORIFICE
DESIGNAZIONE DELL'ORIFIZIO

MF MASTERCYLINDER FRONT AXLE
HAUPTZYLINDER VORDERACHSE
MAITRE CYLINDRE ESSIEU AVANT
CILINDRO PRINCIPALE ASSE ANTERIORE

MR MASTERCYLINDER REAR AXLE
HAUPTZYLINDER HINTERACHSE
MAITRE CYLINDRE ESSIEU ARRIERE
CILINDRO PRINCIPALE ASSE POSTERIORE

RL REAR AXLE - LEFT
HINTERACHSE - LINKS
ESSIEU ARRIERE - A GAUCHE
ASSE POSTERIORE - A SINISTRA

RR REAR AXLE - RIGHT
HINTERACHSE - RECHTS
ESSIEU ARRIERE - A DROITE
ASSE POSTERIORE - DESTRA

FL FRONT AXLE - LEFT
VORDERACHSE - LINKS
ESSIEU AVANT - A GAUCHE
ASSE ANTERIORE - A SINISTRA

FR FRONT AXLE - RIGHT
VORDERACHSE - RECHTS
ESSIEU AVANT - A DROITE
ASSE ANTERIORE - DESTRA

TECHNICAL DATA
TECHNISCHE DATEN
CARACTERISTIQUES TECHNIQUES
CARATTERISTICHE TECNICHE

WORKING MEDIUM : BRAKE FLUID DOT 3, DOT 4, DOT 5.1 - FMVSS 116
BETRIEBSMEDIUM : BREMSFLUESSIGKEIT DOT 3, DOT 4, DOT 5.1 - FMVSS 116
FLUIDE D UTILISATION : LIQUIDE DE FREIN DOT 3, DOT 4, DOT 5.1 - FMVSS 116
FLUIDO DI ESERCIZIO : LIQUIDO PER FRENI DOT 3, DOT 4, DOT 5.1 - FMVSS 116

AMBIENT TEMPERATURE :
UMGEBUNGSTEMPERATUR : -40°C...+85°C
TEMPERATURE AMBIANTE :
TEMPERATURA AMBIENTE :

TEMPERATURE RANGE OF MEDIUM:
DRUCKMITTELTEMPERATURBEREICH : -40°C...+85°C
PLAGE DE TEMPERATURE DU FLUIDE:
GAMMA DI TEMPERATURA DEL FLUIDO:

NOMINAL VOLTAGE :
NENNSPANNUNG : 24 DCV
TENSION NOMINALE :
TENSIONE NOMINALE :

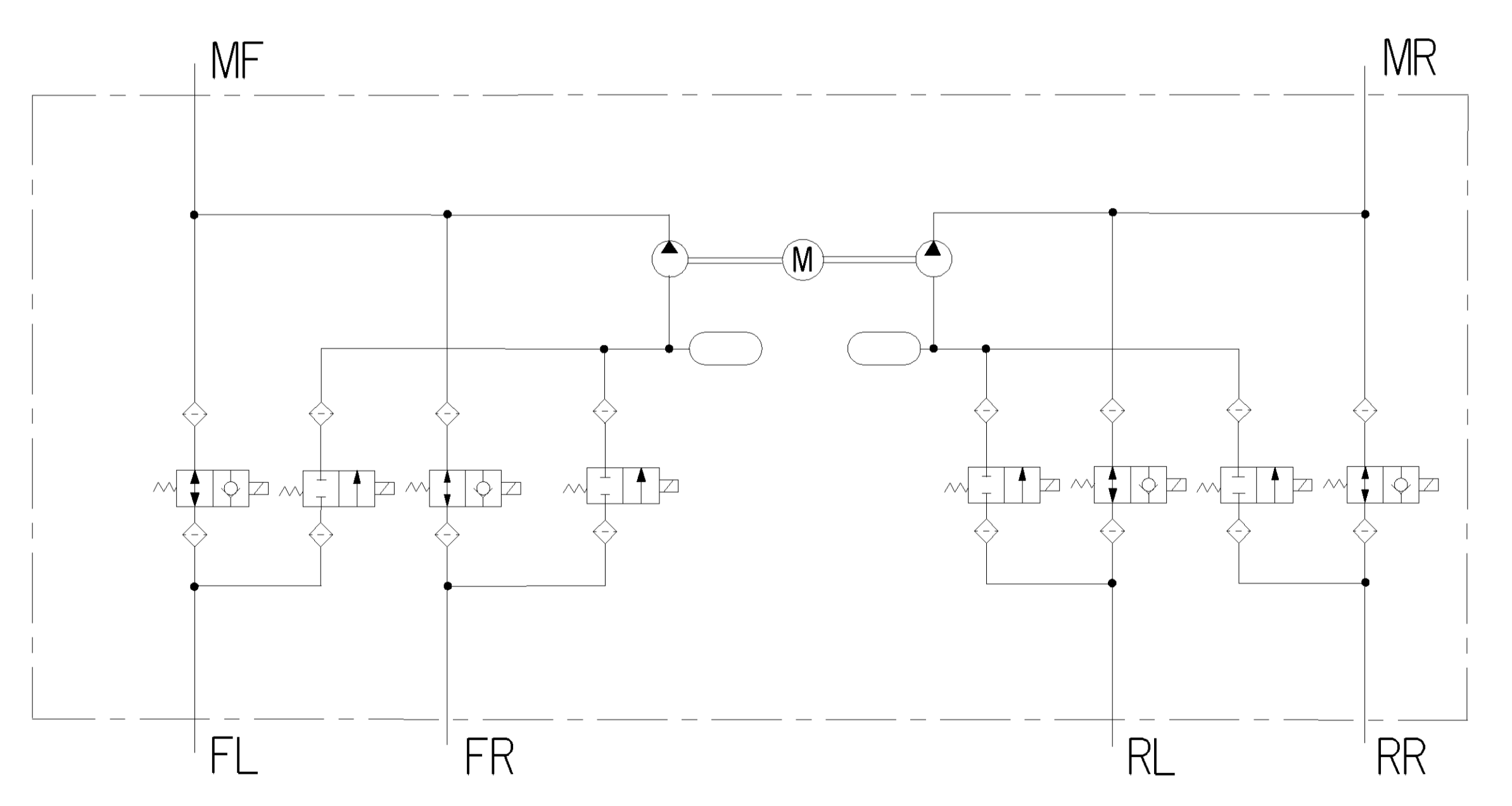
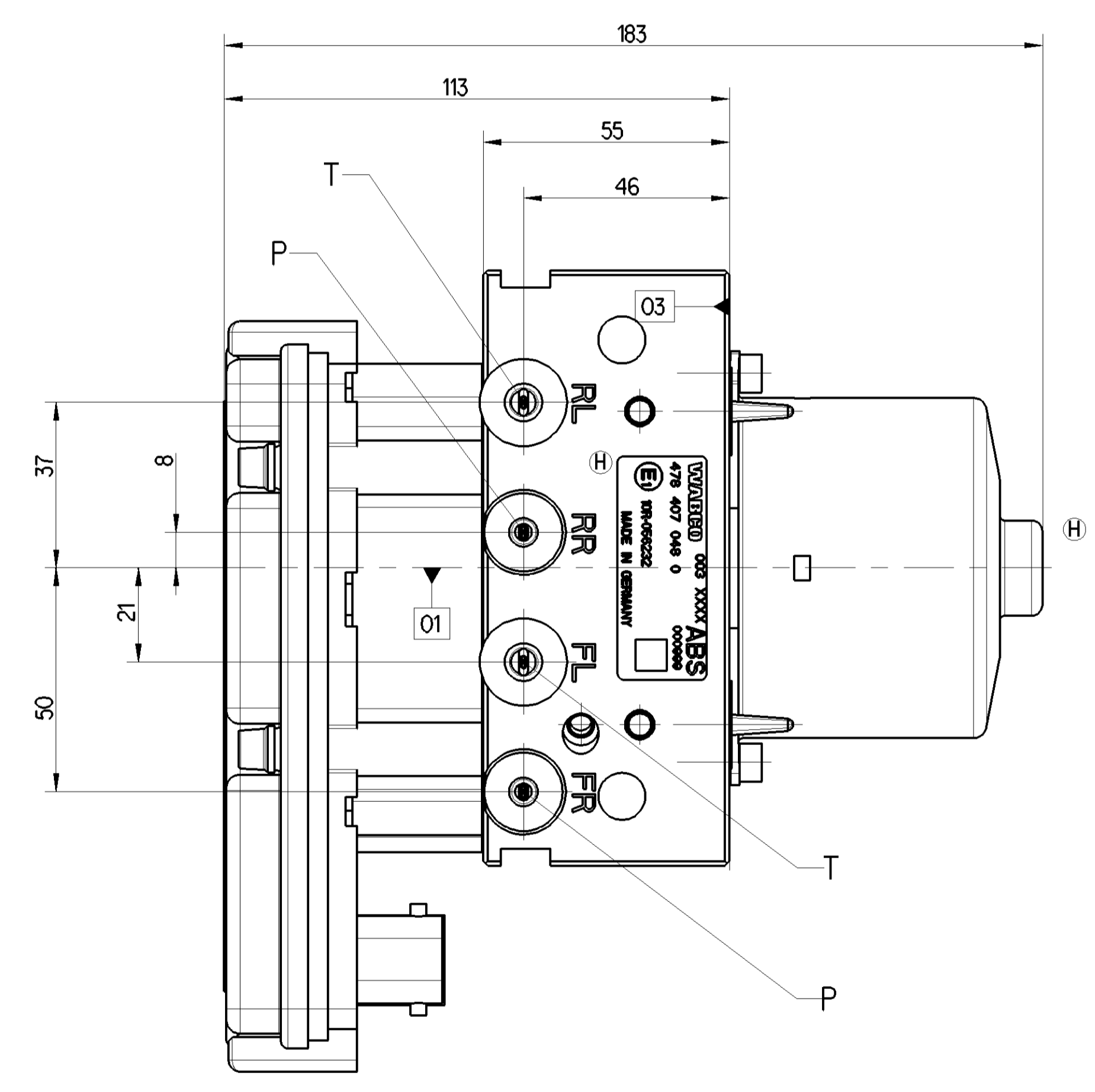
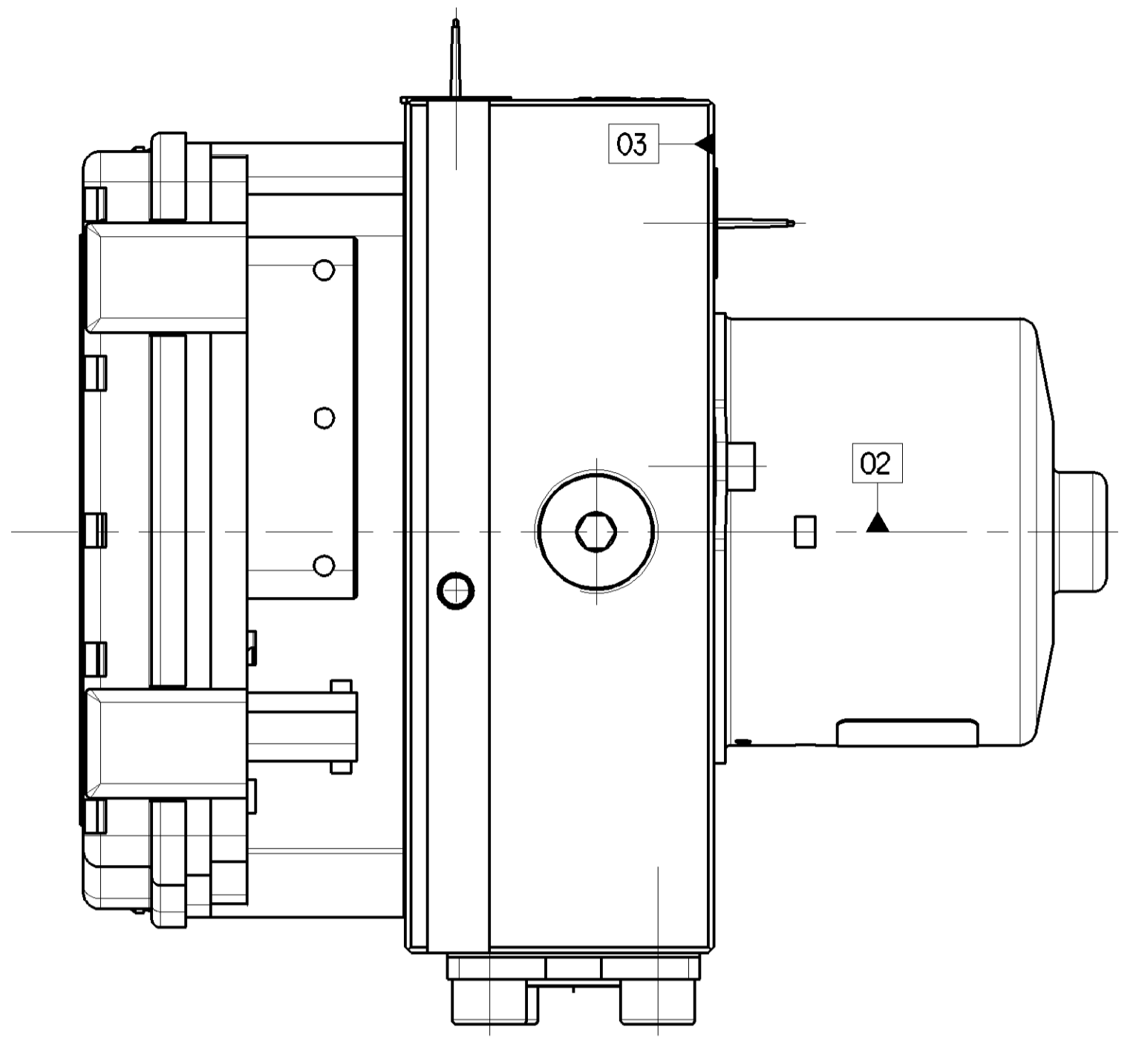
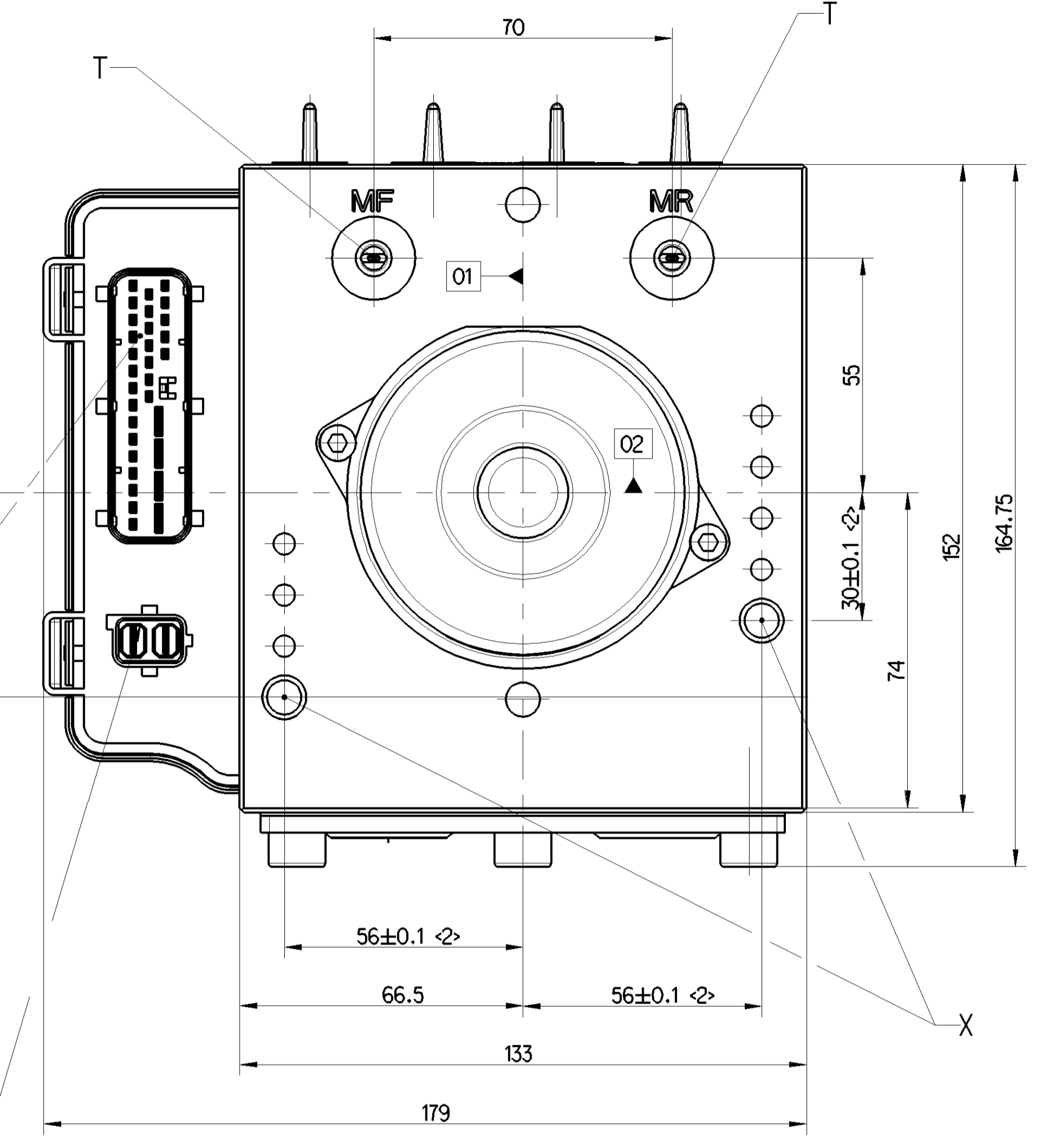
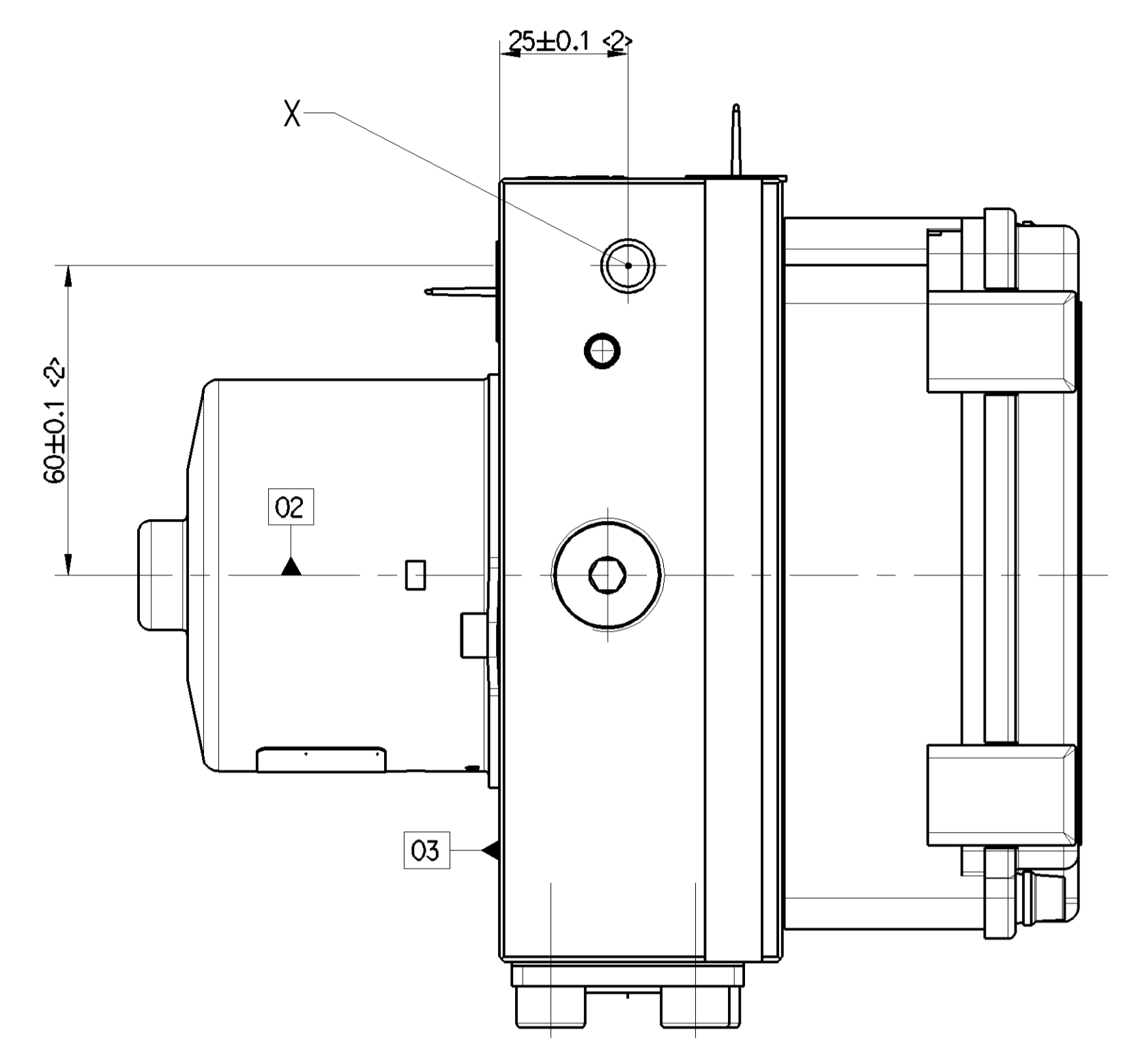
TYPE OF PROTECTION ACC :
SCHUTZART : IP 6K9K
MODE DE PROTECTION SUIVANT :
TIPO DI PROTEZIONE SECONDO :

SURFACE PROTECTION: STEEL PARTS ACC. TO JED- 256 - . (Cr6free)
OBERFLAECHENSCHUTZ: STAHLTEILE NACH JED- 256 - . (Cr6frei)
PROTECTION DE SURFACE: PIECES EN ACIER SELON JED- 256 - .
PROTEZIONE SUPERFICIE: PEZZI DI ACCIAIO CONFORME A JED- 256 - .

PARAMETERSET :
PARAMETERSATZ : 5
SET DE PARAMETRES:
SET DI PARAMETRI :

SOFTWARE VERSION :
SOFTWAREVERSION : HECM0001
VERSION DU SOFTWARE :
VERSIONE DEL SOFTWARE :

H TYPE - APPROVAL ACCORDING TO :
TYPE - GENEHMIGUNG NACH : E 10R-056232



DIMENSIONING MADE ON THE BASIS OF THE AMP REFERENCE NUMBER:
CASING ASSEMBLY ACCORDING TO DRAWING C-208-15556 REV.5.2
CODING: NUMERO 0
MATCHING THE MATING CONNECTOR ACCORDING TO DRAWING C-953042; AMP-Ref: 1-953042-6

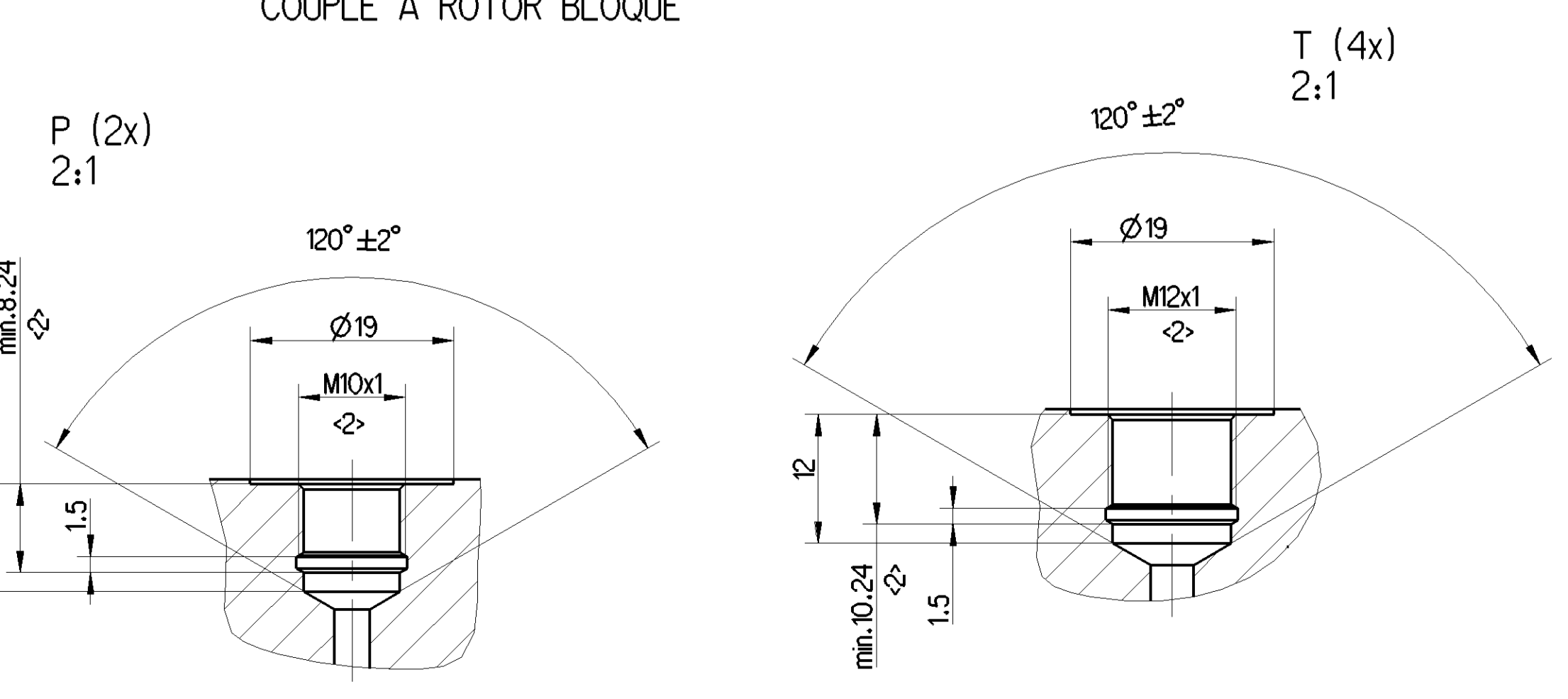
MASSLICHE AUSFUEHRUNG ANHAND FOLGENDER AMP-SACHNUMMERN:
GEHAUSEBAUGRUPPE NACH ZEICHNUNG C-208-15556 REV.5.2
KODIERUNG: NUMERO 0
PASSEND ZU GEGENSTECKER NACH ZEICHNUNG C-953042; AMP-Ref: 1-953042-6

DIMENSIONNEMENT FAIT A L'AIDE DU NUMERO DE REFERENCE AMP:
SOUS-ENSEMBLE DE BOITE SUIVANT PLAN C-208-15556 REV.5.2
CODIFICATION: NUMERO 0
ASSORTI AU PENDANT SUIVANT PLAN C-953042; AMP-Ref: 1-953042-6

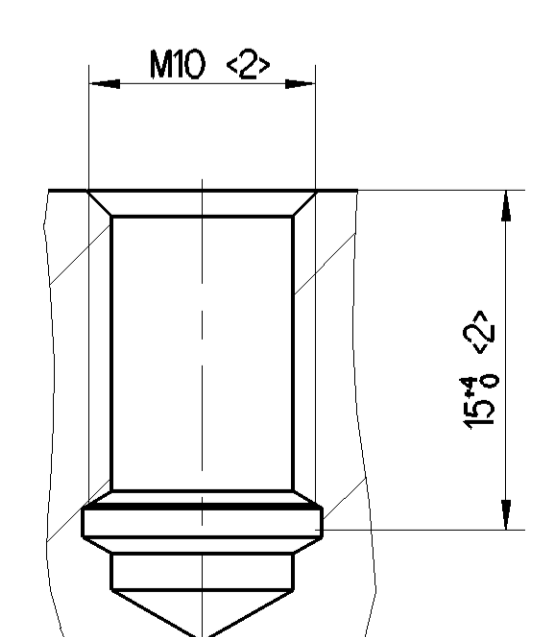
DIMENSIONAMENTO FATTO SULLA BASE DI NUMERO DI RIFERIMENTO AMP:
SOTTOGRUPPO DI CORPO SECONDO DISEGNO C-208-15556 REV.5.2
CODICE: NUMERO 0
ADATTO AL CONNETTORE CORRISPONDENTE SECONDO DISEGNO C-953042; AMP-Ref: 1-953042-6

CONNECTION NOT FUNCTIONAL AND PLUGGED
NICHT FUNKTIONSFÄHIG UND VERSCHLOSSEN
FERME
CHIUSO

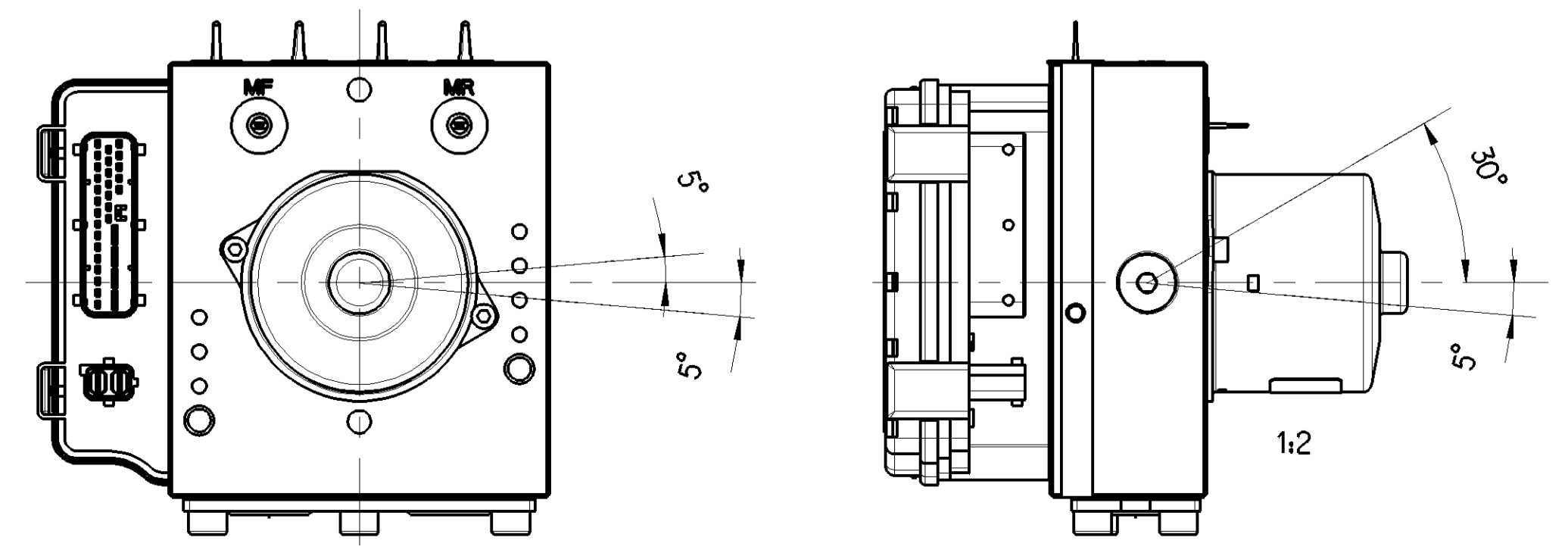
LOCKED ROTOR TORQUE FOR BRAKE LINES
ANZUGSMOMENT FUER BREMSROHR : M=15±3Nm
COUPLE A ROTOR BLOQUE



X 5:1
BORE IN THE FIXATION
BEFESTIGUNGSBOHRUNGEN : M=30±3 Nm
ORIFICE DANS LA FIXATION
ORIFIZIO NEL FISSAGGIO



INSTALLATION POSITION
EINBAULAGE
POSITION D'INSTALLATION
POSIZIONE DI MONTAGGIO



01, 02, 03 DATUM PLANE
BEZUGSEBENE
PLAN DE REFERENCE
PLANO DI RIFERIMENTO

| | | | |
|--|--|---|---|
| General Specifications Further Technical Data 400 CSD 026 0 Doc. Code: 036 General Temperature: 40-100 Range of Nominal Dimensions (± mm) Class (H) ± 50 ± 100 ± 400 ± 400 Size Min. 0.5 1.0 1.5 2.0 Medium X 1.0 2.0 3.0 4.0 Coarse 2.0 3.5 5.0 6.5 Tapped Holes acc. Tapped Holes: Acetab. (Pre-tapped) | Copyright WABCO® Date: 2019-03-12 Sheet: 1 of 40 2019-03-13 Hertich 4.9 1:1 A O Prov'E | Signature: M M S Modulator Modulator Modulator | Date of first issue: 2007-06-25 Doc. Code: Language: Sheet: 005 ML 1/1 Revision: 17582 3 x H 5496 Replacement for: |
|--|--|---|---|