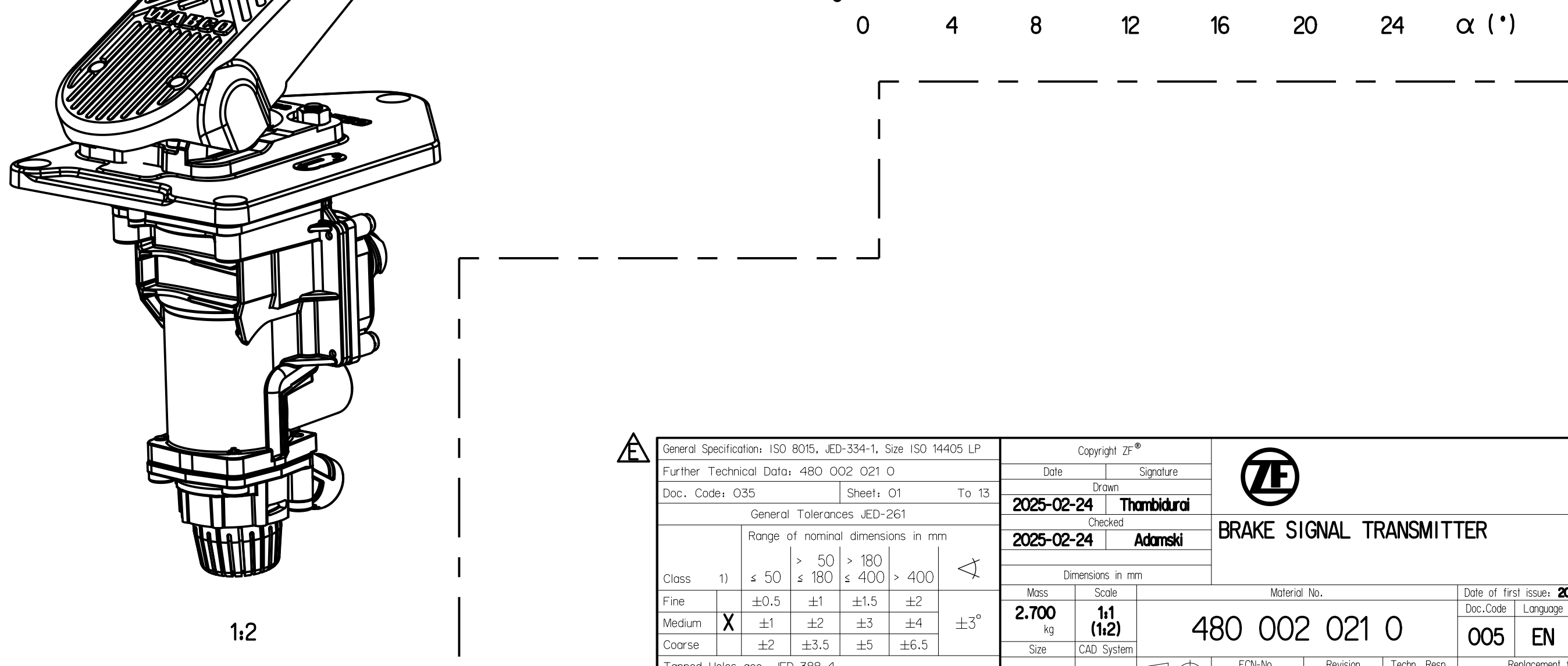
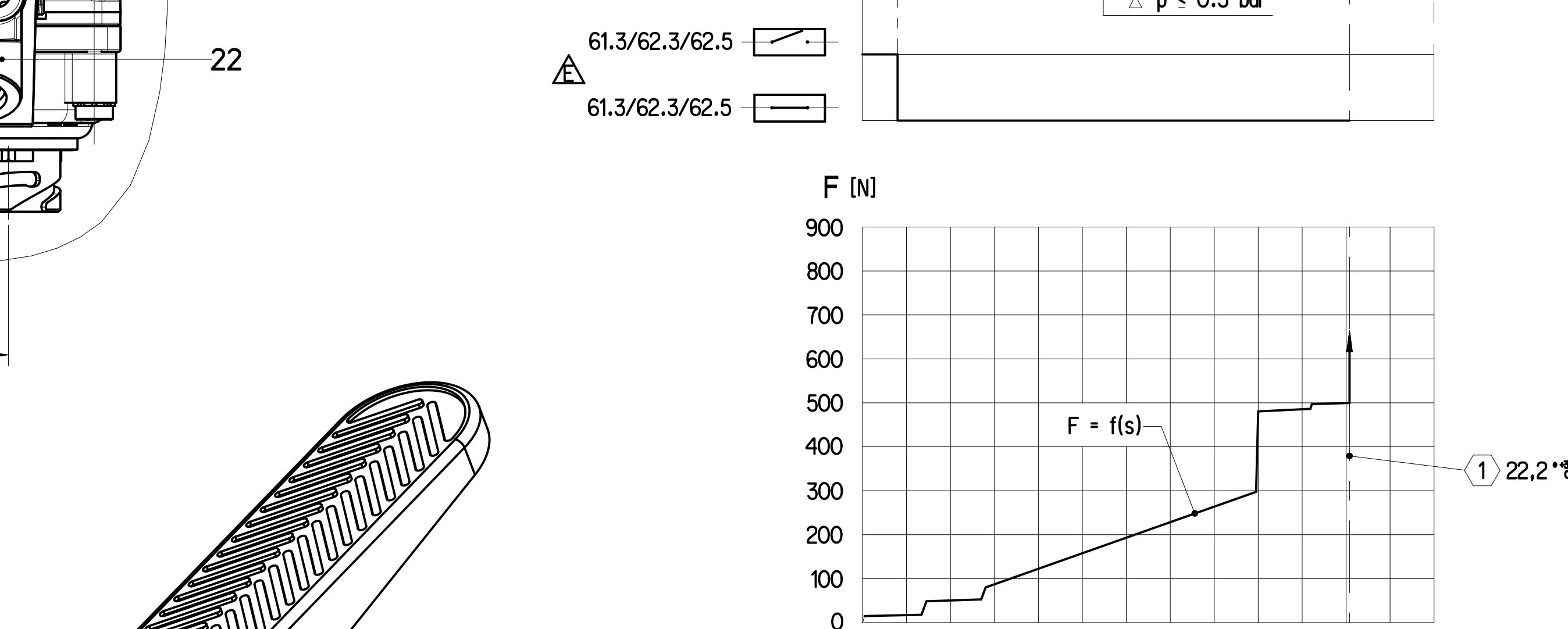
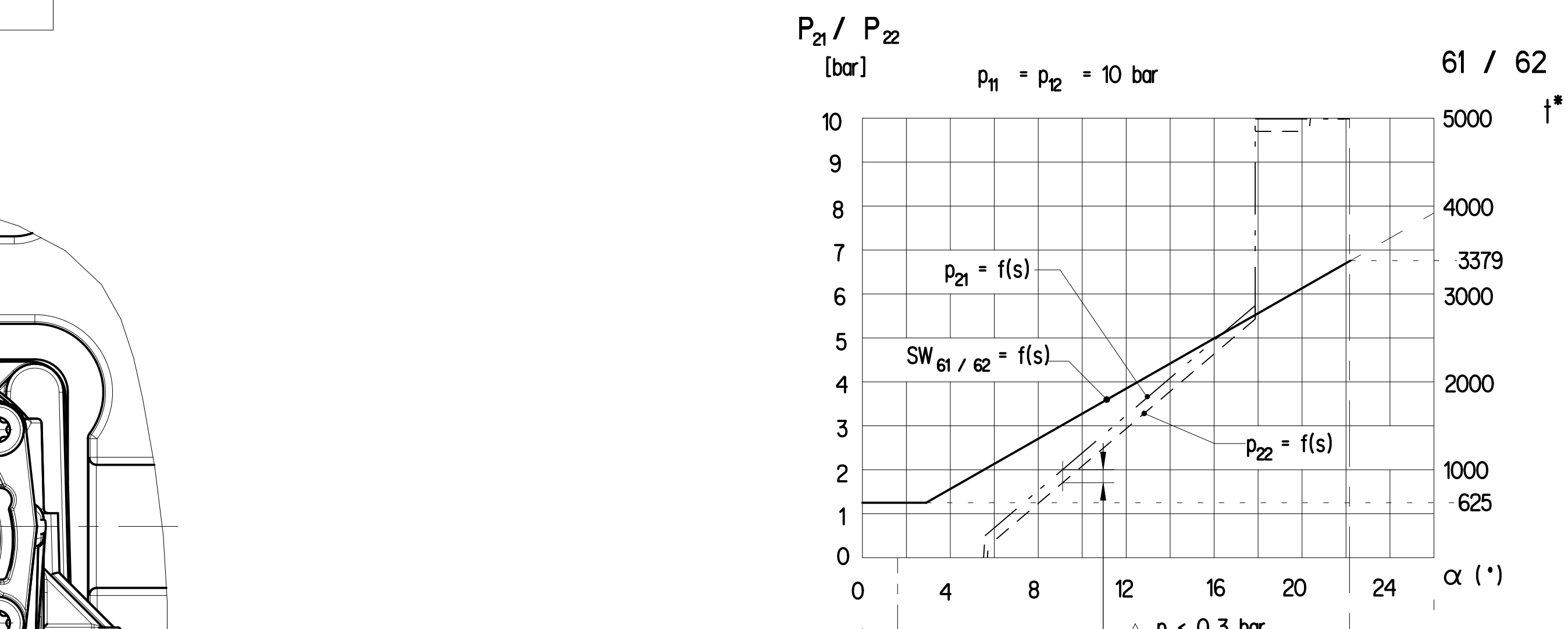
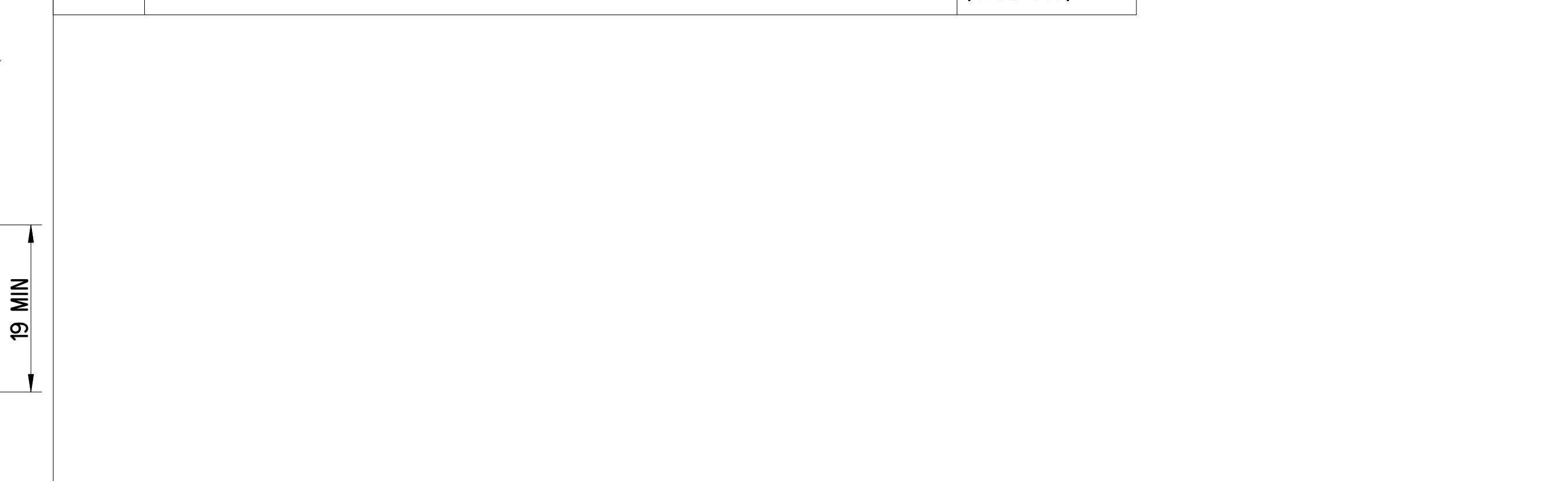


(1)	CUSTOMER NUMBER OR COUNTRY OF ORIGIN (OPTIONAL)	(1)	STOP WITHIN THE DEVICE ADMISSIBLE	(A)	MATERIAL	SURFACE PROTECTION
(2)	MANUFACTURING PLANT CODE	(2)	IN THIS ZONE	(II)	ALUMINIUM	CHROMATED
(3)	WEEK & YEAR OF MANUFACTURING	(3)	CONNECTOR	(III)	STEEL	ZINC / ZINC ALLOY
(4)	ZF DEVICE NUMBER	(4)	INSPECTION MARK	(IV)	ALUMINIUM	-
(5)	DATA MATRIX CODE	(5)	SUITABLE FOR : VOSS 232 / NS8	(V)	ALUMINIUM	TIN NICKEL PLATED
		(6)	SUITABLE FOR : VOSS 232 / NS12	(VI)	ALUMINIUM	ANODISED
		(7)	ZF DEVICE MARKING	(VII)	ALUMINIUM	BONDED COATING
			NOMINAL DIAMETER CIRCUIT 1	PORT	DESIGNATION	TIGHTENING TORQUE
			NOMINAL DIAMETER CIRCUIT 2	11 / 12	SUPPLY	MAX. 15 Nm
			THERMAL RANGE OF APPLICATION	21 / 22	OUTLET	
			AMBIENT MEDIUM	3	EXHAUST	
			WORKING MEDIUM	61 / 62	ELECTRICAL BRAKE SIGNAL	
			RANGE OF VOLTAGE			
			CURRENT CONSUMPTION			
			LOAD CARRYING CAPACITY			
			OUTLET			
			PERMISSIBLE PRESSURE			
			WORKING PRESSURE			
			DEGREE OF PROTECTION ACC. TO IEC 529			
			COMPLETE DEVICE WITH MOUNTED COUPLING			
			ELECTRIC TERMINALS WITH MOUNTED COUPLING			
			MAX. PERMISSIBLE			
			FOR FURTHER TECHNICAL DATA SEE PRODUCT SPECIFICATION DOCUMENT NO			



General Specifications: ISO 9016, ED-534-1, Size ISO 14405 LP	Copyright ©	ZE
Further Technical Data: 480 002 021 0	Date: 2025-02-24	Sheet: 01
Doc. Code: 035	General Tolerances: ISO 2011	2025-02-24
Class: 1	Range of nominal dimensions in mm	2,700
Material: X	Surface: 1/1	480 002 021 0
Coarse: X	Size: 1/1	005 EN 1/1
Tap: X	Material: 54798	29 E 6960