

HANDLING, STORAGE, PACKAGING, PRESERVATION AND DELIVERY
HANDHABUNG, LAGERUNG, VERPACKUNG, KONSERVIERUNG UND VERSAND 480 020 000 0 (DOC 035)

FOR FURTHER TECHNICAL DATA SEE PRODUCT SPECIFICATION DOCUMENT N°
WEITERE TECHNISCHE DATEN SIEHE PRODUKTSPEZIFIKATION-DOKUMENTEN NR 480 002 123 0 (CODE 035)

THE DEVICE IS SUITED FOR INSTALLATION ON THE DRIVER'S CAB ONLY
GERAET IST NUR FUER FAHRERHAUSANBAU GEEIGNET

PERMISSIBLE LEAKAGE ZULAESSIGE LECKAGE		SEE PRODUCT SPECIFICATION SIEHE PRODUKTSPEZIFIKATION	
THERMAL RANGE OF APPLICATION THERMISCHER ANWENDUNGSBEREICH	-40 °C....+80 °C		
SHORT TERM RESISTANCE TO HEAT KURZZEITIGE WAERMEBESTAENDIGKEIT	MAX. 110 °C AT 1h	WITHOUT FUNCTION OHNE FUNKTION	
NOMINAL DIAMETER NENNWEITE	12 => 22 11 => 21 22 => 3 21 => 3	Ø6 mm Ø5 mm Ø5.4 mm Ø5 mm	
WORKING MEDIUM ARBEITSMEDIUM	AIR (WATER-,OIL-AND ALCOHOL CONTAINING) LUFT (WASSER-,OEL-UND ALKOHOLHALTIG)		
AMBIENT ENVIRONMENT UMGEBUNGSMEDIUM	AIR (WATER-,SALT-; DUST-AND OIL CONTAINING) LUFT (WASSER-,SALZ-;STAUB-UND OELHALTIG)		
PERMISSIBLE PRESSURE ZULAESSIGER DRUCK		pe = MAX.15 bar	
WORKING PRESSURE BETRIEBSDRUCK		pe = 13 bar	
IN A DISTANCE OF IM ABSTAND VON	7m	SOUND LEVEL SCHALLPEGEL	< 69 dbA (ISO 3744)
OPERATING VOLTAGE BETRIEBSSPANNUNG		24 ⁺⁸ ₋₁₂ V DC	
LOAD-CARRYING CAPACITY BELASTBARKEIT	6.4 / 6.6	≤ 10mA OHMSCHER LAST	
OUTLET AUSGANG	6.5 / 6.7	PWM-SIGNAL I _{max} .20mA R _i =100KΩ	
CURRENT CONSUMPTION STROMAUFNAHME	6.2	MAX.200mA	

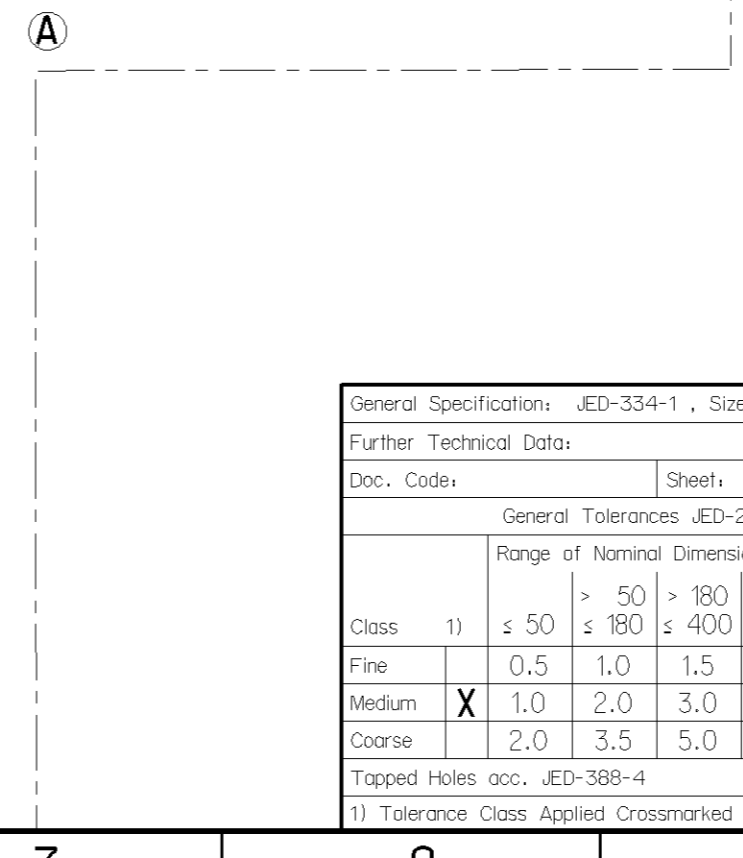
PROTECTION CLASS ACC. TO SCHUTZKLASSE NACH		VDE 0580
TYPE OF PROTECTION SCHUTZART	COMPLETE DEVICE WITH MOUNTED COUPLING KOMPLETTES GERAET MIT MONTIERTER KUPPLUNG	IP 6K6K IP 6K9K
	ELECTRIC TERMINALS WITHOUT MOUNTED COUPLING ELEKTRISCHE ANSCHLUESSE OHNE MONTIERTER KUPPLUNG	IP 6K7

MAX. LEAKAGE, DURING PRESSURE MAINTENANCE OR WHILE NOT OPERATED, NEW DEVICE	≥ -20 °...+80 °C	10 cm ³ /min.	DIN 1343
MAX. LECKAGE , DRUCKHALTEND ODER UNBETAETIGT, NEUGERAET	-40 °...-20 °C	1500 cm ³ /min	

Non e permesso copiare, o terzi o riprodurre questo documento, ne utilizzare il contenuto o renderlo comunque noto a terzi senza autorizzazione esplicita. Ogni infrazione costituisce un evidente abuso e comportera il risarcimento dei danni subiti. E' fatta riserva di tutti i diritti derivanti da brevetti o modelli.

Toute communication ou reproduction de ce document, toute exploitation ou communication de son contenu sont interdites, sauf autorisation expresse. Tout manquement a cette regle constitue un abus evident et expose son auteur au versement de dommages et interets. Tous droits de proprieete industrielle reserves, notamment en matiere de brevets et de modesles.

Coping of this document and giving it to others and the use or communication of the contents thereof, are forbidden without express authority. Contravention of this restriction will constitute an evident abuse and result in a liability to the payment of damages. All rights are reserved in the event of the grant of patent or registration of a utility model or design. This document is the subject of copyright.



General Specification: JED-334-1, Size ISO 14405 LP		Copyright WABCO®		WABCO	
Further Technical Data:		Date	Signature		
Doc. Code	Sheet	To	Drawn	2018-05-29	Damek
General Tolerances JED-261			Checked	BRAKE SIGNAL TRANSMITTER BREMSWERTGEBER	
Range of Nominal Dimensions (± mm)			Expert	2018-05-30 Kesko	
Class 1)	≤ 50	> 50 ≤ 180	> 180 ≤ 400	> 400	±3°
Fine	0.5	1.0	1.5	2.0	±3°
Medium	X 1.0	2.0	3.0	4.0	
Coarse	2.0	3.5	5.0	6.5	
Tapped Holes acc. JED-388-4		Mass	Scale	Material No.	Date of first issue: 2017-01-18
1) Tolerance Class Applied Crossmarked		2.700 KG	NTS	480 002 123 0	Doc.Code Language Sheet
		A 2	CREO	ECN-No. 177309	Revision 9 A
		Techn. Resp. 6860		Replacement for 480 002 103 0	