

DEGREE OF PROTECTION ACC. IEC 529	COMPLETE DEVICE	IP 6K, IP 69	MARKING OF PORTS		TORQUE
	ELECTRIC TERMINALS WITH MOUNTED COUPLING	IP 67	1	SUPPLY	Mmax. = 53Nm
PROTECTION CLASS		III	2	DELIVERY OF ENERGY	Mmax. = 53Nm
PERMISSIBLE INSTALLATION		±45°	3	EXHAUST	-
THE VALVE CORRESPONDS TO THE REGULATIONS FOR ELECTROMAGNETIC DEVICES ACCORDING TO		VDE 0580	42	CONTROL	Mmax. = 34Nm
FOR FURTHER TECHNICAL DATA SEE PRODUCT SPECIFICATION			6	ELECTRICAL CONTROL (MAGNET)	

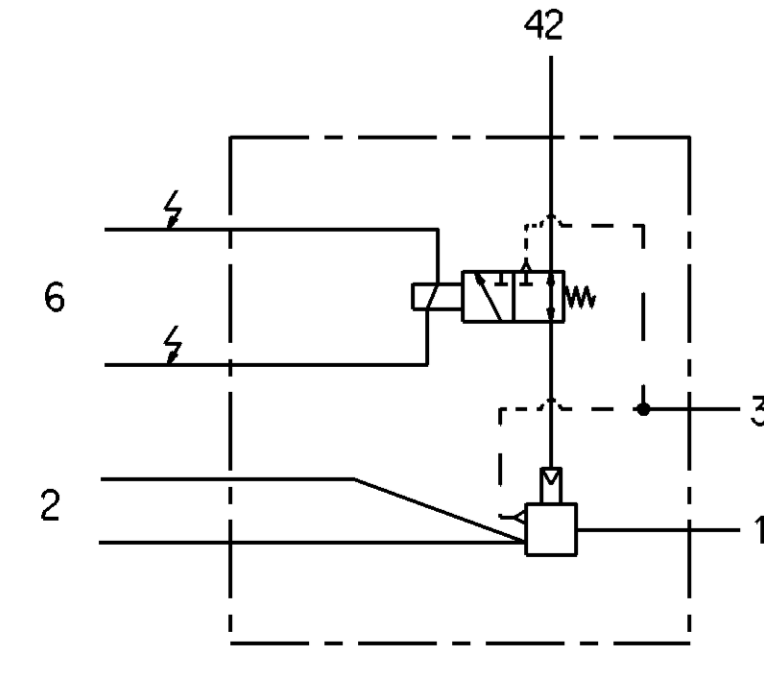
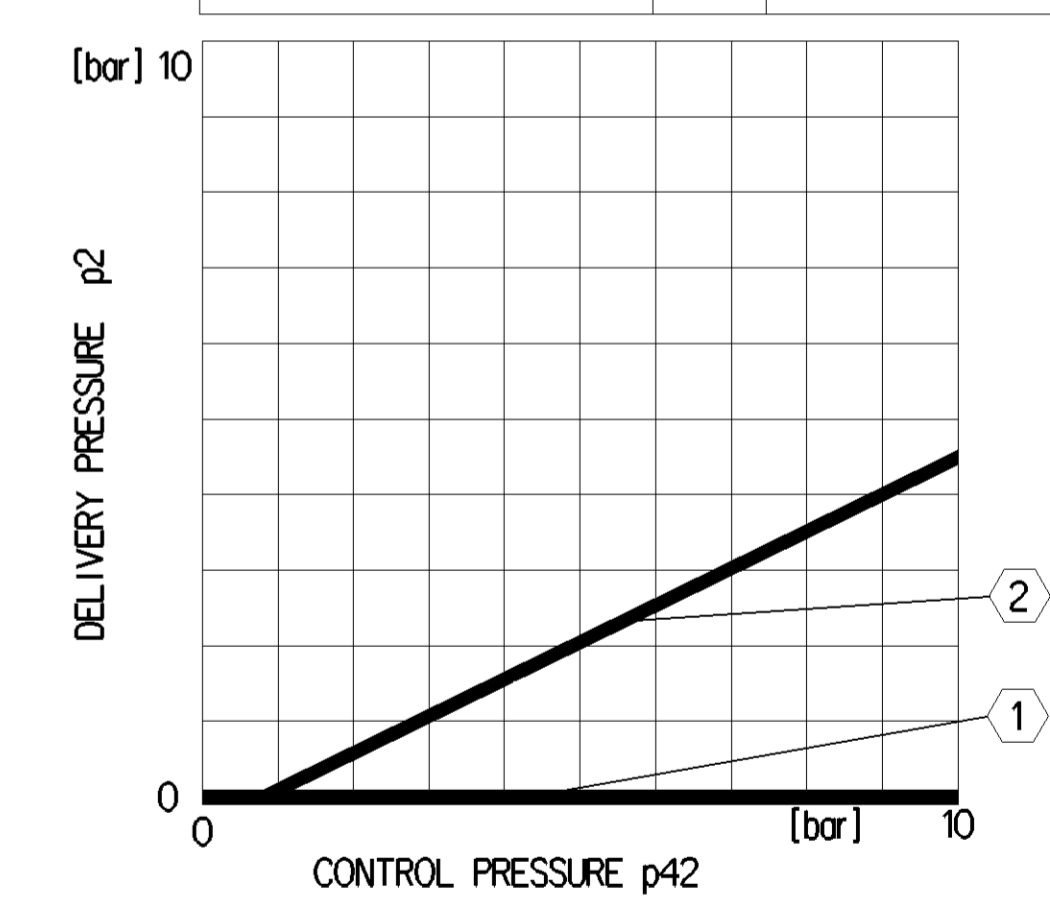
- (1) CUSTOMER NO. OR COUNTRY OF ORIGIN OR BLANK
(2) MANUFACTURING PLANT JED-225
(3) WEEK / YEAR OF MANUFACTURE
(4) WABCO-DEVICE NUMBER

	MATERIAL		SURFACE PROTECTION	
I	Al	JED-029M1	Cr	F JED-259
II	Fe	JED-051M4	Zn/Fe	JED-256-1
III	X47Cr14	JED-058M2		
IV	Pa6.6	JED-559		
V	CuZn	JED-570-616		
VI	AlMg5			
VII	Fe	JED-021M3	Zn/Fe	JED-256-1
VIII	NBR	JED-235		
IX	Al	JED-077-1	Anodic Oxidation	JED-007-1
X	Fe	JED-051M4	Zn/Fe	JED-256-4
XI	Al	JED-029M1	Cr	JED-259-1

WORKING MEDIUM	AIR (WATER-, OIL AND ALCOHOL CONTAINING)
WORKING ENVIRONMENT	AIR (CONTAINING WATER, SALT, DUST AND OIL)
THERMAL RANGE OF APPLICATION UNDER NORMAL AMBIANT CONDITIONS	-40°...+80°C
SHORT TERM RESISTANCE TO HEAT	+110°C (p1= 0 bar, max. 1h)

WORKING PRESSURE	MAX. pe 13 bar
SUPPLY PRESSURE	MAX. ps 13 bar
SOCKET	DIN 72585 1A 2.1-SN / K2
VOLTAGE	6.5V 24V - 9.5V
TYPE OF CURRENT	DIRECT CURRENT
SERVICE CONDITION	INTERMITTENT SERVICE

CHARACTERISTIC	①	U > 14.5V
	②	U < 0.5V



General Specification: JED-334-0		Copyright WABCO®		WABCO	
Further Technical Data: 480 205 102 0		Date: 2018-02-01		SOLENOID RELAY VALVE	
Doc. Code: 035		Revision: 1		Material No.:	
General Tolerances JED-261		Expert: Kuczkiewicz		Date of first issue: 2012-06-18	
Range of Nominal Dimensions (± mm)		Date of issue: 2018-02-01		Doc. Code: Language: Sheet:	
Class 1) > 50 > 180 > 400		Expert: Kuczkiewicz		Material No. 480 205 102 0	
Fine 0.5 1.0 1.5 2.0		Date of issue: 2018-02-01		Date of first issue: 2012-06-18	
Medium X 1.0 2.0 3.0 4.0		Date of issue: 2018-02-01		Doc. Code: Language: Sheet: 005 EN 1/1	
Coarse 2.0 3.5 5.0 6.5		Date of issue: 2018-02-01		ECh-No.: 166269	
Tapped Holes acc. ISO 4039		Date of issue: 2018-02-01		Revision: 16 x F	
Tolerance Class Applied Crossmarked		Date of issue: 2018-02-01		Tech. Resp.: 6820	
		Date of issue: 2018-02-01		Replacement for: 480 205 102 0/97-03-10	

Tutti i diritti sono riservati. È vietata espressamente la ristampa o l'uso non autorizzato senza permesso scritto dalla WABCO. Le informazioni tecniche sono state fornite in buona fede.