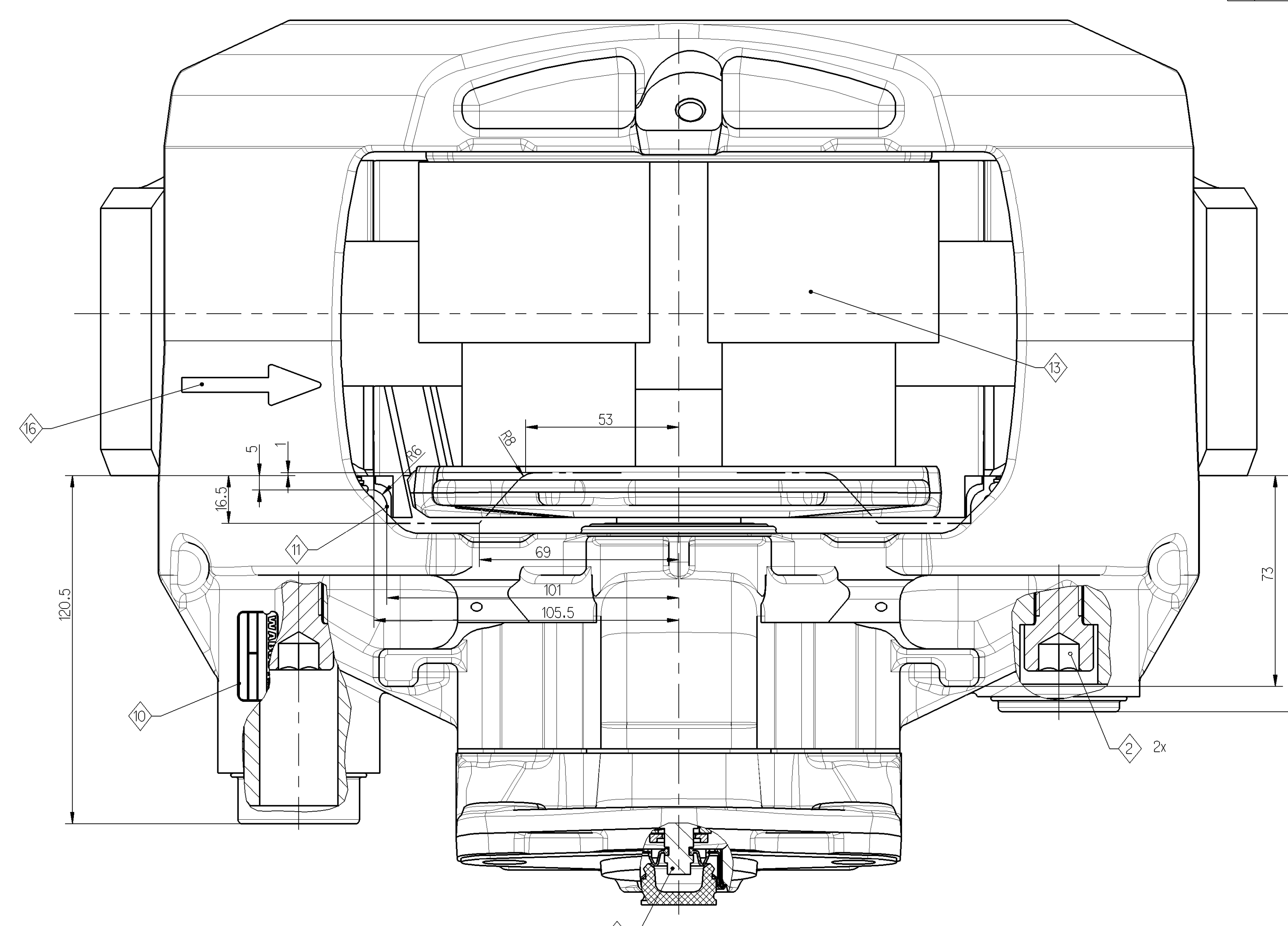
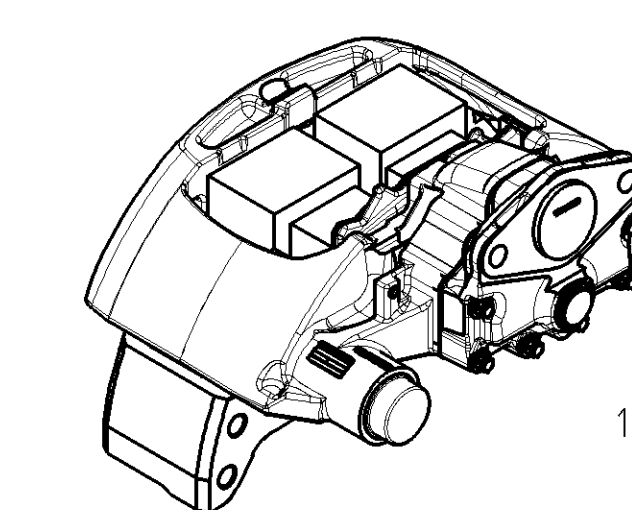
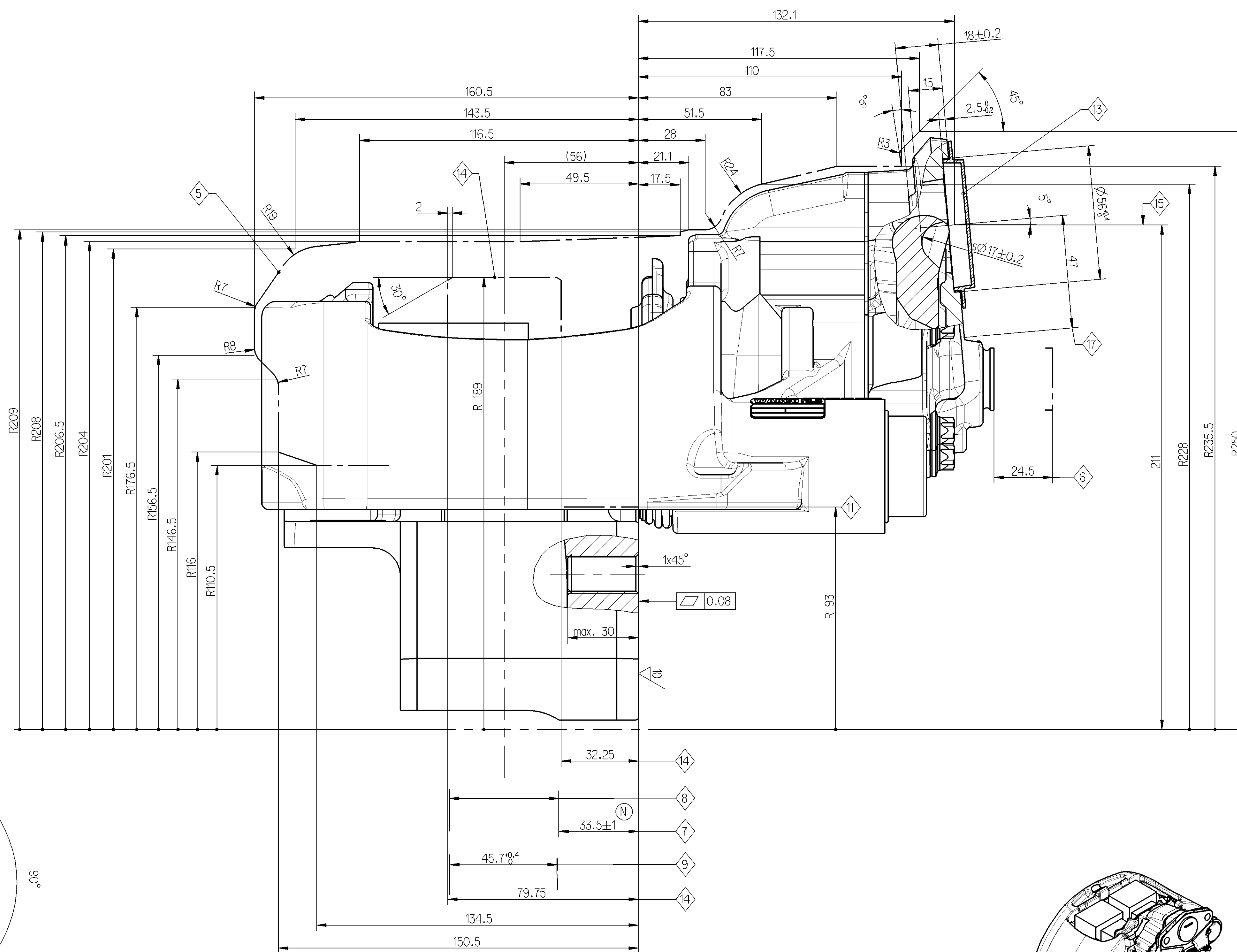
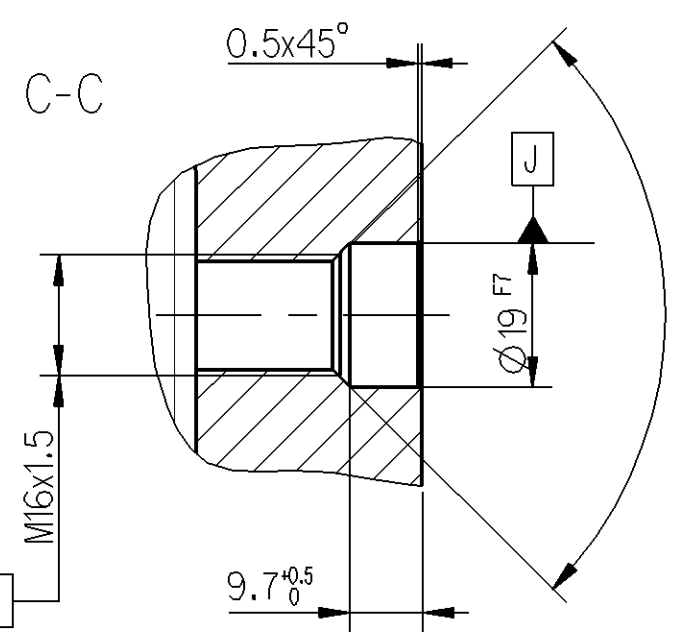
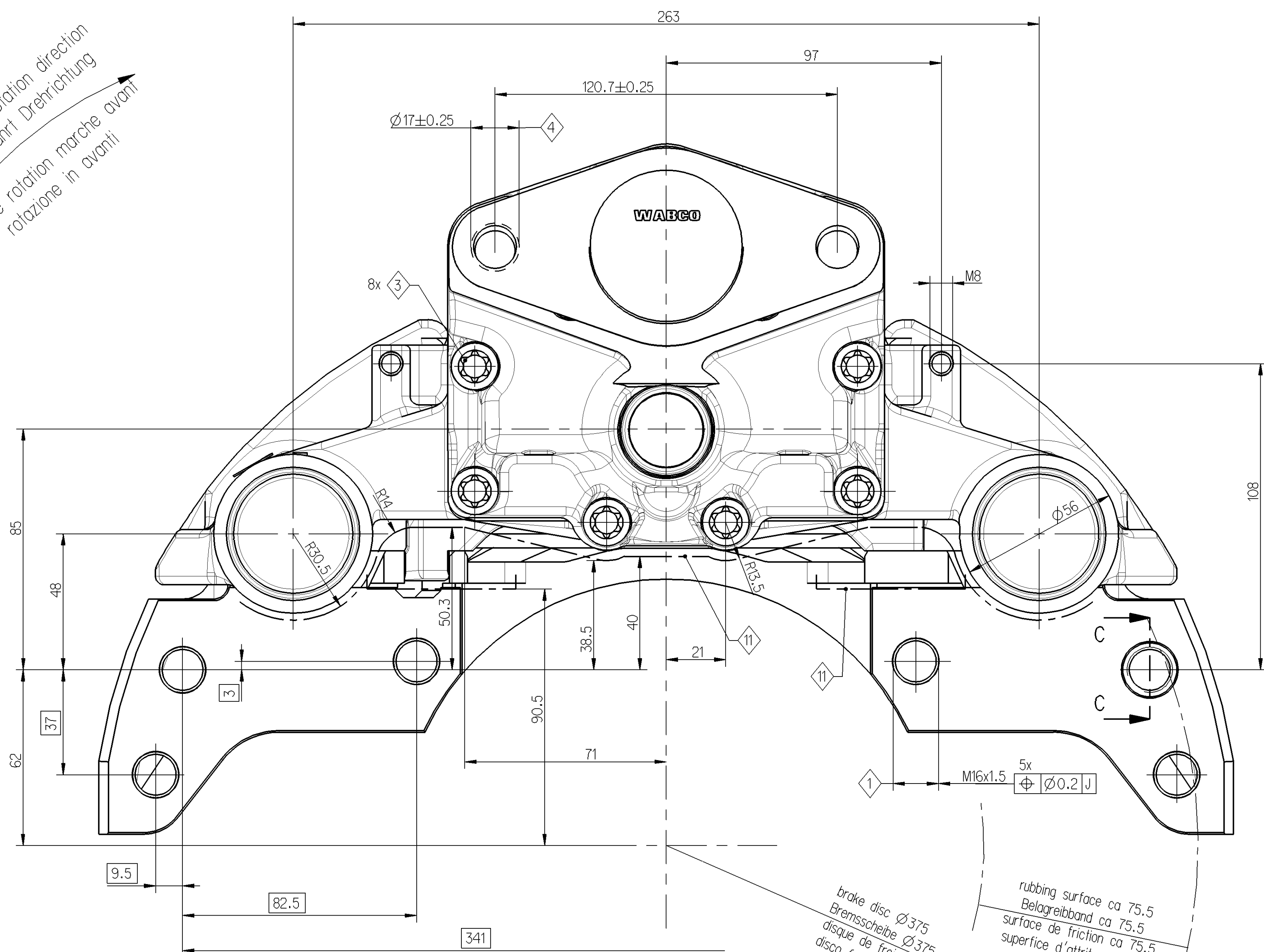
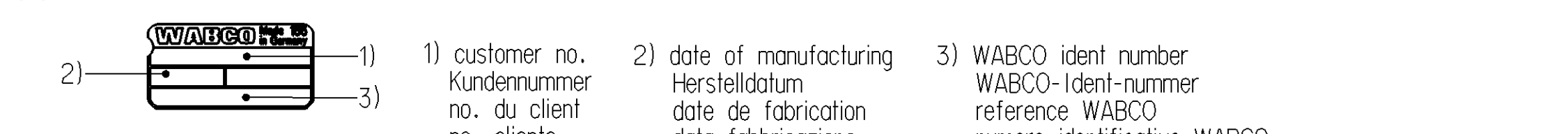


forward drive-rotation direction
Vorwärtsfahrtrichtung
sens de rotation marche avant
rotazione in avanti



	tightening torque Anziehdrehmoment couple de serrage coppia di serraggio	width over flats SW surplus misura chiave	note Bemerkung remarque annotazione
①	230 ± 20 Nm	24 DIN 961 23 ISO 8676	brake mounting hexagon screw, oiled M16 x 1.5 x ... - 10.9 Bremsenbefestigung Sechskantschraube, geölt M16 x 1.5 x ... - 10.9 vis a tête hexagonale, huilée M16 x 1.5 x ... - 10.9 vite a testa esagonale, oliate M16 x 1.5 x ... - 10.9
②	340 ± 20 Nm	14	tightening order 1. long bolt 2. short bolt DIN 92 M6x1.5x0-2.9 Anziehdrehfolge 1. Bolzen lang 2. Bolzen kurz DIN 92 M6x1.5x0-2.9 ordre de serrage 1. axe long 2. axe court DIN 92 M6x1.5x0-2.9 sequenza di serraggio 1. viti lunghe 2. viti corte DIN 92 M6x1.5x0-2.9
③	68 ± 5 Nm	E 12	cover fixing DIN 34800 - M10x1x40-12.9 Deckelbefestigung DIN 34800 - M10x1x40-12.9 fixation couvercle DIN 34800 - M10x1x40-12.9 fissaggio coperchio DIN 34800 - M10x1x40-12.9
④	210 - 30 Nm	24	operation cylinder M16x1.5 Betriebszylinder M16x1.5 actionneur M16x1.5 cilindro operatore M16x1.5

- ⑤ max. rotary outline
maximale Rotationskontur
profil envelope maximal
rotazione profilo massimo
- ⑥ max. displacement
maximale Verschiebung
deplacement maximal
max. movimento
- ⑦ fitting dimension of the disc
Scheibeneinbauss
dimension de montage du disque
quota fissaggio disco
- ⑧ brake disc new 45-0.2, wearable up to 37
Bremscheibe neu 45-0.2, verschleissbar bis 37
disque neuf 45-0.2, a user jusqu'à 37
disco freno nuovo 45-0.2, usabile fino 37
- ⑨ assembly dimension for brake pads
Einbauss fuer Bremsbeloage
dimension de montage des garnitures
dimensione assemblaggio pastiglie freno
- ⑩ product identification WABCO
Kennzeichnung WABCO
identification WABCO
identificazione prodotto WABCO
- ⑪ envelope circle caliper with cover
Huellkreis Bremssattel mit Deckel
enveloppe etrier avec couvercle
incombro pinza con coperchio
- ⑫ hexagon width over flats 8
Sechskant SW 8
tête hexagonale (surplus 8)
esagono SW 8
- ⑬ for storage and shipment
fuer Transport und Lagerung
pour stockage et transport
per stoccaggio e trasporto
- ⑭ maximum disc clearance
Scheibefreigang
course libre du disque
max. dimensione installazione disco
- ⑮ center line cylinder
Mitte Zylinder
axe median actionneur
centro cilindro
- ⑯ forward drive - rotation direction
Vorwärts Drehrichtung
sens de rotation marche avant
rotazione in avanti
- ⑰ brake actuator size restriction see part specification
640 195 001 O max. actuator type 24
Zylinderanschussmasse nach Part-Spezifikation
640 195 001 O max. Zylinder Typ 24
dimension de connexion de cylindre de frein part specification
640 195 001 O limitation taille de cylindre, max. acceptée type 24
per misure di collegamento dall'attuatore freno vedere le specifiche
640 195 001 O cilindro max. tipo 24



Produkt-Spezifikation 640 195 001 O	40 195 038	mirror image Spiegelbild image inverse immagine riflessa
product-specification 640 195 001 O	40 195 037	as shown wie gezeichnet come descritto come disegnato
Ident-no brake Material-Nr. Bremse reference from code matiere freino	customer no. Kundennummer no. du client no. cliente	brake type Ausführung Bremse varante de frein versione freno

dimensions without tolerances are gauge dimensions
nicht tolerierte Masse = Lehrenmasse
dimensions non tolerances = calibres
le dimension senza tolleranza sono quelle riferite al calibro

PAN 19-1

coating
anti-corrosion protection - salt spray test min. 96 hours
Beschichtung
Korrosionsschutz-Salzsprühnebelpruef., min. 96 Std.
protection of surface
tenue BS 96 h min.
rivestimento
protezione contro la corrosione - prova di resistenza alla nebbia salina dopo almeno 96 h

General Specification: 640-354-0

Further Technical Data:

Doc. Code	2013-01-30	Sheet	1
Revision	2013-02-11	Revised	1
Drawn	29.273	Scale	1:1
Checked		Appr.	
Material No.	40 195 037	Part No.	053 ML 1/1
Material	160M5	Part No.	6921

Disc brake PAN-range light
Scheibenbremse PAN-Reihe leicht
Frein a disque PAN-type gamme basse
Pinza freno a disco tipo PAN leggero