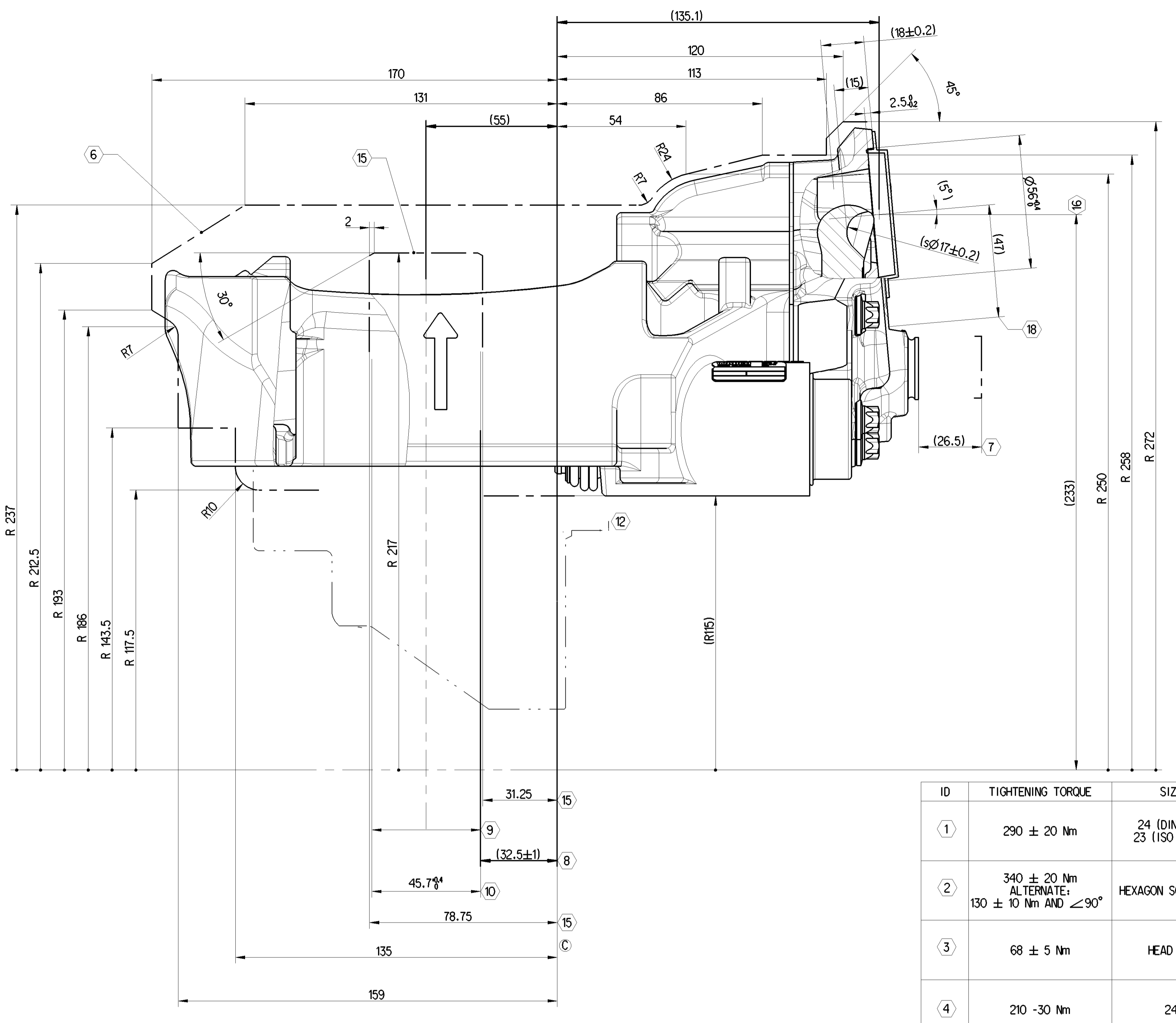
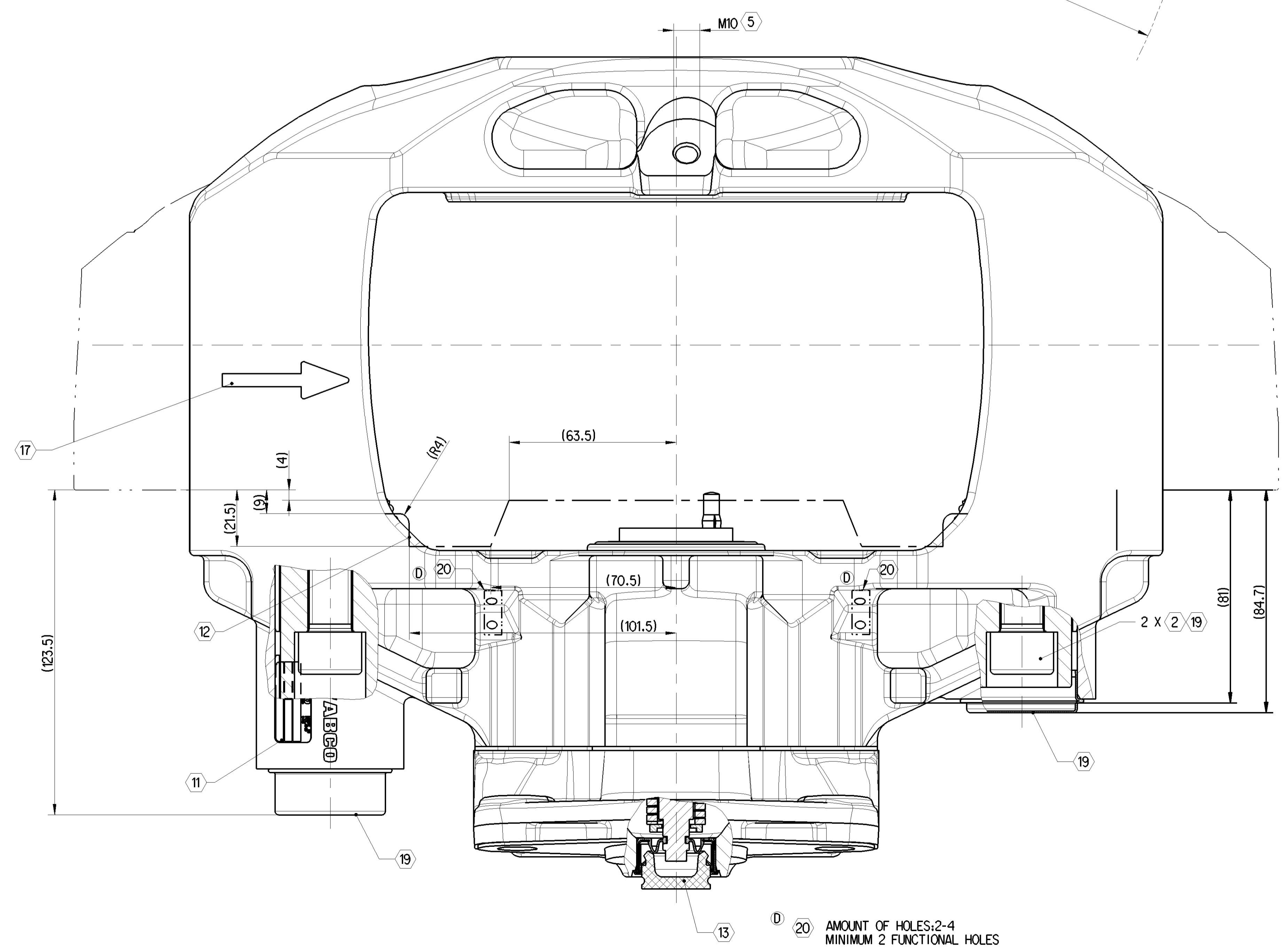
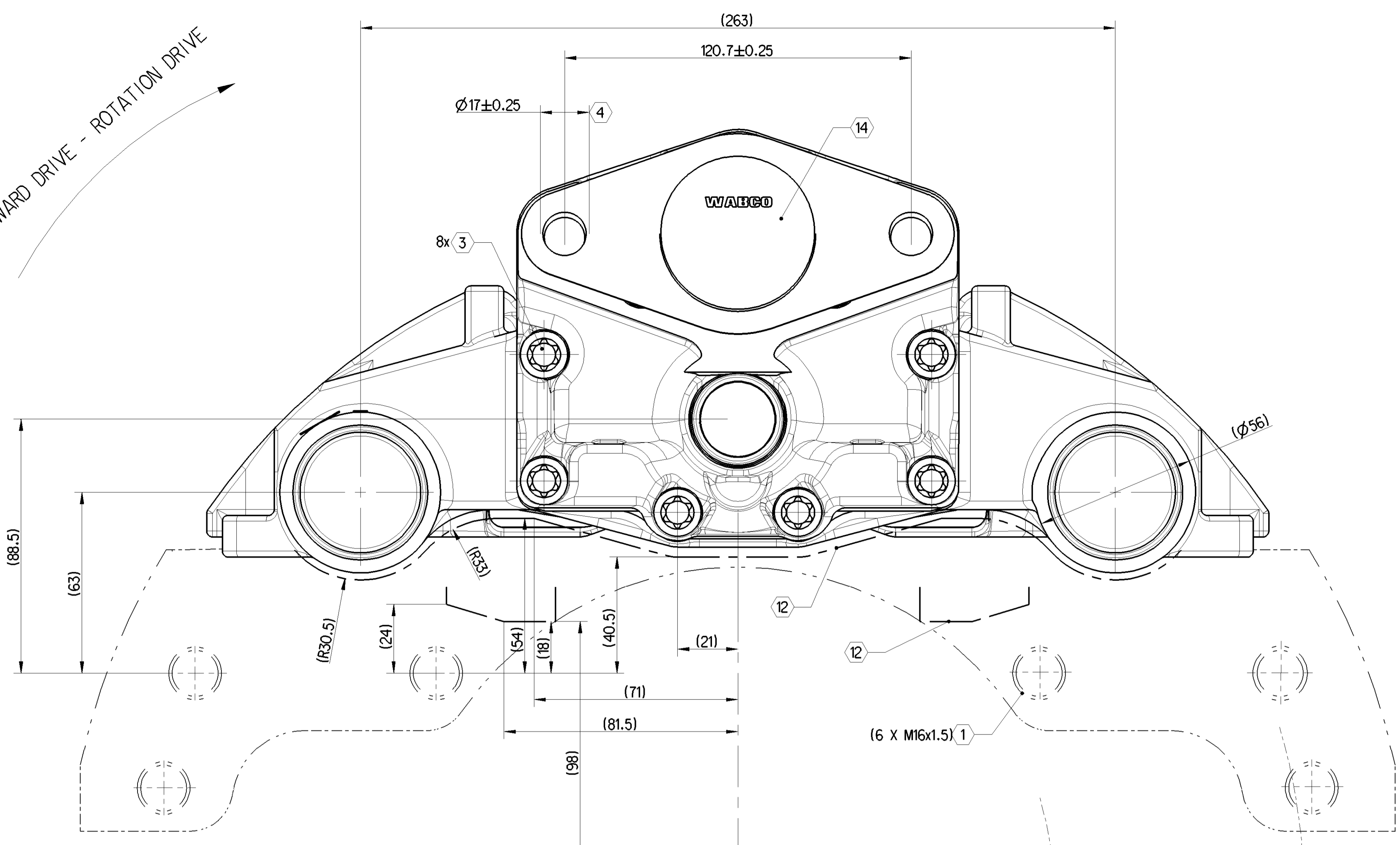


FORWARD DRIVE - ROTATION DRIVE

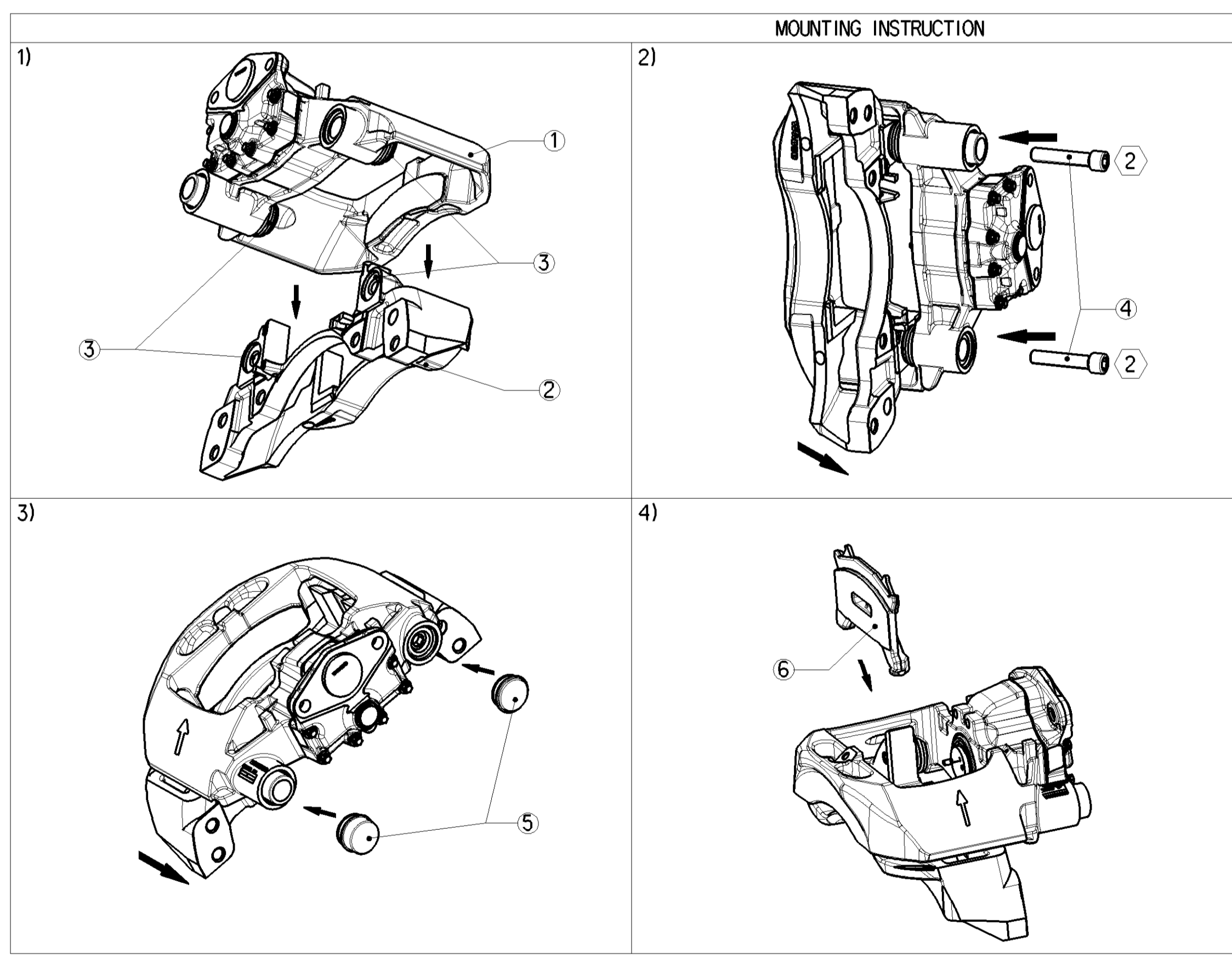


ID	TIGHTENING TORQUE	SIZE	REMARKS
1	290 ± 20 Nm	24 (DIN 961) 23 (ISO 8676)	BRAKE MOUNTING HEXAGON SCREW, OILED M16 x 1.5 x ... - 10.9
2	340 ± 20 Nm ALTERNATE: 130 ± 10 Nm AND $\angle 90^\circ$	HEXAGON SOCKET 14	TIGHTENING ORDER (DIN 912-M16x1.5x80-12.9) 1. LONG BOLT 2. SHORT BOLT
3	68 ± 5 Nm	HEAD E12	COVER FIXING DIN 34800 - M10x1x40 - 12.9
4	210 -30 Nm	24	OPERATION CYLINDER M16x1.5
5	40 + 5 Nm	17	SCREW FOR LINING RETAINER
6	MAX. ROTARY OUTLINE		
7	MAX. DISPLACEMENT		
8	FITTING DIMENSION OF THE DISC		
9	BRAK DISC NEW 45-0.2, WEARABLE UP TO 37		
10	ASSEMBLY DIMENSION FOR BRAKE PADS		
11	PRODUCT IDENTIFICATION WABCO		
12	ENVELOPE CIRCLE CALIPER WITH COVER		
13	HEXAGON HEAD 8		
14	FOR STORAGE AND SHIPMENT		
15	MAXIMUM DISC CLEARANCE		
16	CENTER LINE CYLINDER		
17	FORWARD DRIVE - ROTATION DIRECTION		
18	BRAKE ACTUATOR SIZE RESTRICTION SEE PART SPECIFICATION 640 225 015 R		
19	COMPONENTS TO BE MOUNTED BY CUSTOMER		

ANTI-CORROSION PROTECTION - SALT SPRAY TEST MIN. 96 HOURS

PRODUCT SPECIFICATION 640 225 015 R

DIMENSIONS WITHOUT TOLERANCE ARE GAUGE DIMENSIONS



MOUNTING INSTRUCTION

1) MOUNT DEVICE (1) AT THE CARRIER (2) BOLTS LAY ON PROPER PLACES FROM CARRIER (3)

2) TIGHTEN THE SCREWS (4) (ACCORDING TO TABLE INFORMATION) CARRIER MUST BE CLOSE CALIPER FRAME

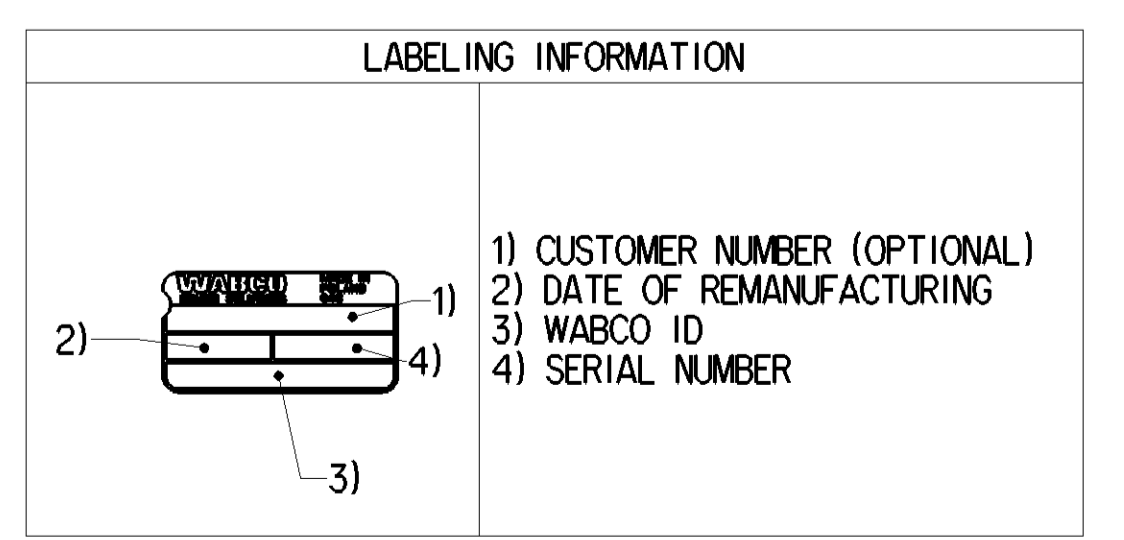
3) PRESSED INTO PROTECTION CAPS (5) CARRIER MUST BE CLOSE CALIPER FRAME AVOID AIR CUSHIONS IN GUIDINGS

4) MOUNT PRESSURE PLATE (6)

MOUNTAGE INFORMATION

ASSEMBLY WITH CARRIER ACCORDING TO "ASSEMBLY AND MAINTENANCE INSTRUCTIONS"

ALWAYS START MOUNTAGE ONLY WHEN YOU HAVE READ AND UNDERSTOOD ALL INFORMATION REQUIRED FOR MOUNTAGE, DOCUMENTS ADDITIONALLY NEEDED: TEST INSTRUCTION, SPARE PARTS LIST, GENERAL REPAIR AND TEST HINTS TO BE FOUND ON WWW.WABCO-AUTO.COM BY ENTERING PRODUCT NUMBER (PLEASE PUT 40 225 015 / 40 225 016) OF THE DEVICE OR THE PUBLICATION NUMBER IN INFORM.



VERSION WITHOUT CARRIER (MARKED BY LINE - - - -) ASSEMBLY DRAWING ONLY FOR CUSTOMER INFORMATION

IDENTIFICATION TABLE			
REMAN PN	REMANUFACTURED DEVICE OF	REFERENCE DOCUMENT	IMAGE
640 225 015 R	40 225 015	640 225 015 0 (Doc.053)	AS DRAWN
640 225 016 R	40 225 016	640 225 015 0 (Doc.053)	MIRROR

General Specifications: 640 225 015 R

Further Technical Data: 640 225 015 R

Doc. Code: 053

Doc. Version: 01

Doc. Date: 2019-07-01

Doc. Size: X

Doc. Weight: 2.0

Doc. Length: 2.0

Doc. Width: 5.0

Doc. Thickness: 6.5

Doc. Material: Steel

Doc. Language: EN

Doc. Sheet: 1/1

Doc. Title: DISC BRAKE CALIPER TYPE PAN 22-1

Doc. Code: 053

Doc. Language: EN

Doc. Sheet: 1/1

Doc. Date: 2019-07-01

Doc. Weight: 2.0

Doc. Length: 2.0

Doc. Width: 5.0

Doc. Thickness: 6.5

Doc. Material: Steel

Doc. Language: EN

Doc. Sheet: 1/1