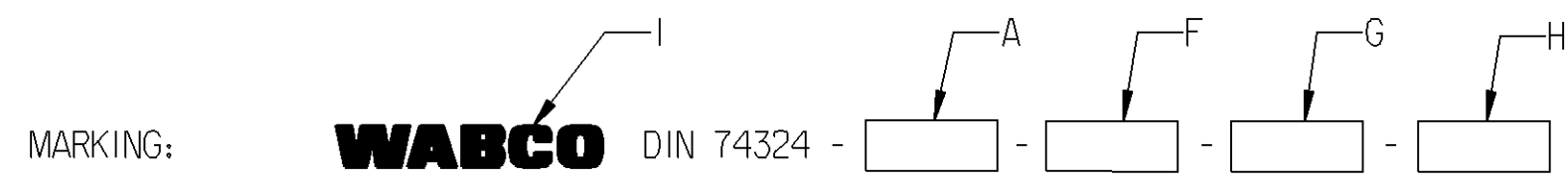


NOMINAL VALUE A ***	OUTER Ø B	INNER Ø C	WALL THICKNESS D	BENDING RADIUS E	MATERIAL ** (ACC. TO DIN 74324) F		MANUFACTURER'S SYMBOL G	DATE OF MANUFACTURE H	TRADEMARK I	MASS	COLOUR
					PREFERABLE	ALTERNATIVE					
10x1.5 (COIL 50 m)	10	7	-	-	PA11-PHL PA12-PHL PA12-HIPHL	PA11-PHLY PA12-PHLY	6-DIGIT SAP-SUPPLIER NO.	ACC. TO JED-226, METHOD B5 (YYWW)	ACC. TO JED-369, HEIGHT APPROX. 5 mm, IN A CONTRASTING COLOR APPROX. EVERY 300 TO 400 mm	40.86 g/m 2.04 kg PER ROLL	BLACK

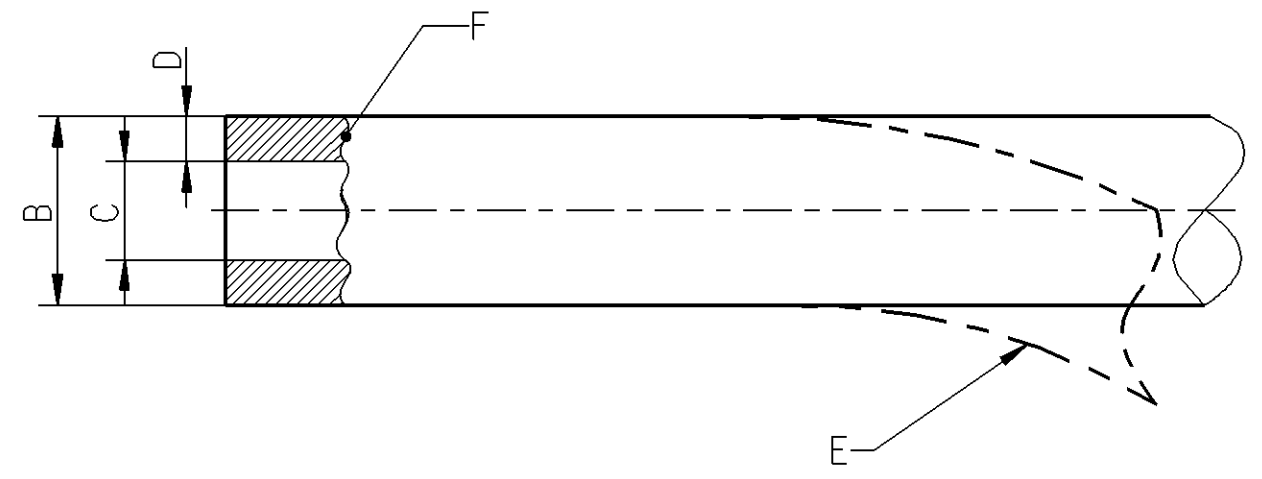
Non è permesso consegnare o terzi o riprodurre questo documento, né utilizzare il contenuto o renderlo comunque noto a terzi
 without the express written consent of the manufacturer. Any unauthorized use, reproduction or distribution of this document is prohibited.
 E' vietato usare o diffondere questo documento, o i suoi contenuti, o renderlo noto a terzi senza il permesso scritto e espresso del produttore.
 Toute communication ou reproduction de ce document, toute exploitation ou communication de son contenu sont interdites, sauf
 autorisation expresse. Toute réimpression ou autre réutilisation de ce document sans autorisation écrite et expresse du fabricant est
 interdite. Todos los usos de este documento, o de su contenido, o de su divulgación, o de su distribución, o de su reproducción,
 sin el consentimiento escrito y expreso del fabricante, quedan expresamente prohibidos.
 Weitergabe sowie Vervielfältigung dieser Unterlagen, Verwertung und Mitteilung ihres Inhalts nicht gestattet, soweit
 nicht ausdrücklich zugelassen. Zuwiderhandlungen stellen einen strafrechtlichen Missbrauch dar und verpflichten zu Schadensersatz.
 Alle Rechte für den Fall der Patentierung oder Gebrauchsmuster-Eintragung vorbehalten.



MEDIUM: AIR
 MASS: SEE TABLE
 COLOUR: SEE TABLE

- * THERMAL RANGE OF APPLICATION: ACC. TO DIN 74324
- * SHORT-TERM RESISTANCE TO HEAT: ACC. TO DIN 74324
- * PERMISSIBLE WORKING PRESSURE: ACC. TO DIN 74324

*** NOMINAL DIAMETER OF PIPE NOT LISTED IN DIN 74324,
 BUT ALL OTHER CHARACTERISTICS ARE ACCORDING TO DIN VALUES



GENERAL SPECIFICATIONS: DIN 74324; JED-226; JED-271; JED-367; JED-369; JED-762

General Specification: JED-334-0, Size ISO 14405-1 E		Copyright WABCO®		WABCO		
Further Technical Data: 893 000 001 0		Date	Signature			
Doc. Code: Sheet: To		2012-10-12		Nerling		
General Tolerances JED-261		2012-10-15		Luechou		
Range of Nominal Dimensions (± mm)		Expert		Kaufmann		
Class 1)	≤ 50	> 50 ≤ 180	> 180 ≤ 400	> 400	±3°	
Fine	0.5	1.0	1.5	2.0	Mass Scale	
Medium	1.0	2.0	3.0	4.0		
Coarse	2.0	3.5	5.0	6.5		
Tapped Holes acc. -		A 2		Pro/E		
1) Tolerance Class Applied Crossmarked		ECN-No.		Revision		
		-		-		
		Techn. Resp.		Replacement for		
		-		-		

* INDICATED VALUES ARE GUIDELINE VALUES
 ** SEE RELEASE OF SUPPLIER, DOC CODE 050