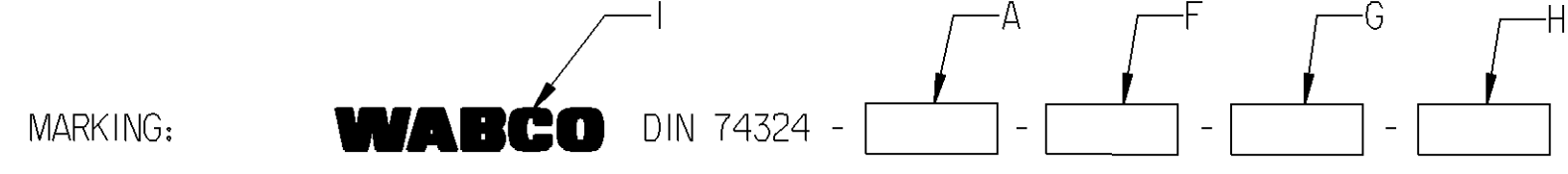


Non è permesso consegnare o terzi o riprodurre questo documento, né utilizzare il contenuto o renderlo comunque noto a terzi
 ni o terzi o riprodurre questo documento, né utilizzare il contenuto o renderlo comunque noto a terzi
 E' fatto riserva di tutti i diritti, espressi o non, e di tutti i brevetti o marchi.
 Copying of this document and giving it to others and the use or communication of the contents thereof, are forbidden without express
 written permission of the manufacturer. In the event of patent or registration of a utility model or design, this document is the subject of copyright.
 Alle Rechte für den Fall der Patentierung oder Gebrauchsmuster-Eintragung vorbehalten.

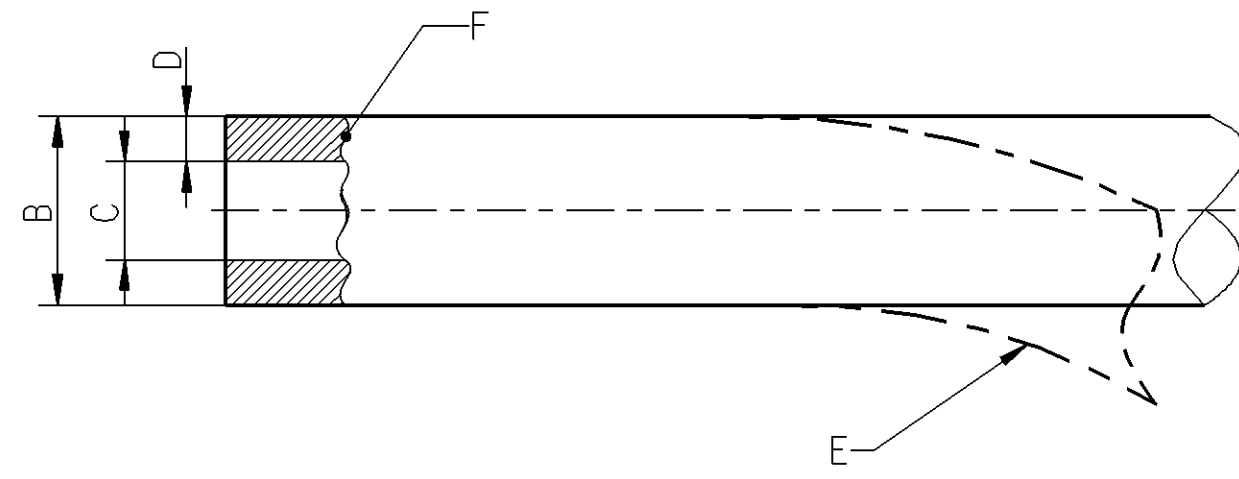
Toute communication ou reproduction de ce document, toute exploitation ou communication de son contenu sont interdites, sauf
 autorisation expresse. Tout manquement à cette règle constitue un abus, éventuellement engageant son auteur au versant de dommages et
 intérêts. Tous droits de propriété industrielle réservés, notamment en matière de brevets et de modèles.
 Weitergabe sowie Vervielfältigung dieser Unterlagen, Verwertung und Mitteilung ihres Inhalts nicht gestattet, soweit
 nicht ausdrücklich zugestanden. Zuwiderhandlungen stellen einen strafrechtlichen Missbrauch dar und verpflichten zu Schadensersatz.
 Alle Rechte für den Fall der Patentierung oder Gebrauchsmuster-Eintragung vorbehalten.

NOMINAL VALUE A	OUTER Ø B	INNER Ø C	WALL THICKNESS D	BENDING RADIUS E	MATERIAL ** (ACC. TO DIN 74324)		MANUFACTURER'S SYMBOL G	DATE OF MANUFACTURE H	TRADEMARK I	MASS	COLOUR
					PREFERABLE	ALTERNATIVE					
12x1.5 (COIL 200 m)	12	9	MIN. 1.35	MIN. R60	PA11-PHL PA12-PHL PA12-HIPHL	PA11-PHLY PA12-PHLY	6-DIGIT SAP-SUPPLIER NO.	ACC. TO JED-226, METHOD B5 (YYWW)	ACC. TO JED-369, HEIGHT APPROX. 5 mm, IN A CONTRASTING COLOR APPROX. EVERY 300 TO 400 mm	50.48 g/m 10.1 kg PER ROLL	BLACK



MEDIUM: AIR
 MASS: SEE TABLE
 COLOUR: SEE TABLE

- * THERMAL RANGE OF APPLICATION: ACC. TO DIN 74324
- * SHORT-TERM RESISTANCE TO HEAT: ACC. TO DIN 74324
- * PERMISSIBLE WORKING PRESSURE: ACC. TO DIN 74324



GENERAL SPECIFICATIONS: DIN 74324; JED-226; JED-271; JED-367; JED-369

General Specification: JED-334-0; JED-762		Copyright WABCO®		WABCO		
Further Technical Data: 893 000 001 0		Date	Signature			
Doc. Code: Sheet: To		2012-07-11		Nerling		
General Tolerances JED-261		2012-08-23		Stephan		
Range of Nominal Dimensions (± mm)		Kaufmann		Expert		
Class 1)	≤ 50	> 50 ≤ 180	> 180 ≤ 400	> 400	±3°	
Fine	0.5	1.0	1.5	2.0	Material No. 828 251 013 6	
Medium	1.0	2.0	3.0	4.0		
Coarse	2.0	3.5	5.0	6.5		
Tapped Holes acc.		Mass	Scale	Date of first issue: 2012-08-23		
1) Tolerance Class Applied Crossmarked		-	-	Doc. Code Language Sheet		
		Size	CAD System	005 EN 1/1		
		A 2	Pro/E	ECN-No.	Revision	
				-	-	
		Techn. Resp.		Replacement for		

* INDICATED VALUES ARE GUIDELINE VALUES
 ** SEE RELEASE OF SUPPLIER, DOC CODE 050

100mm