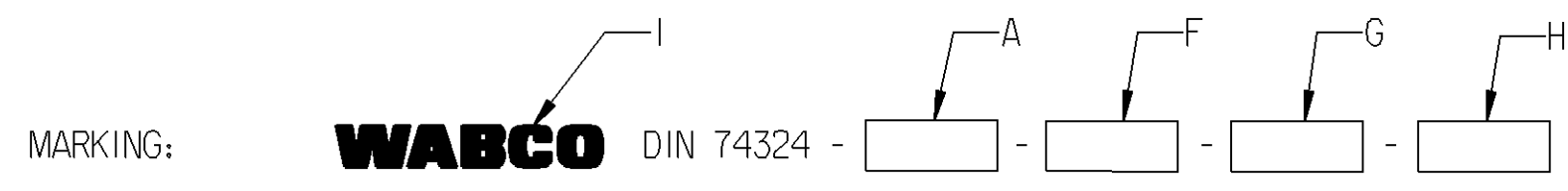


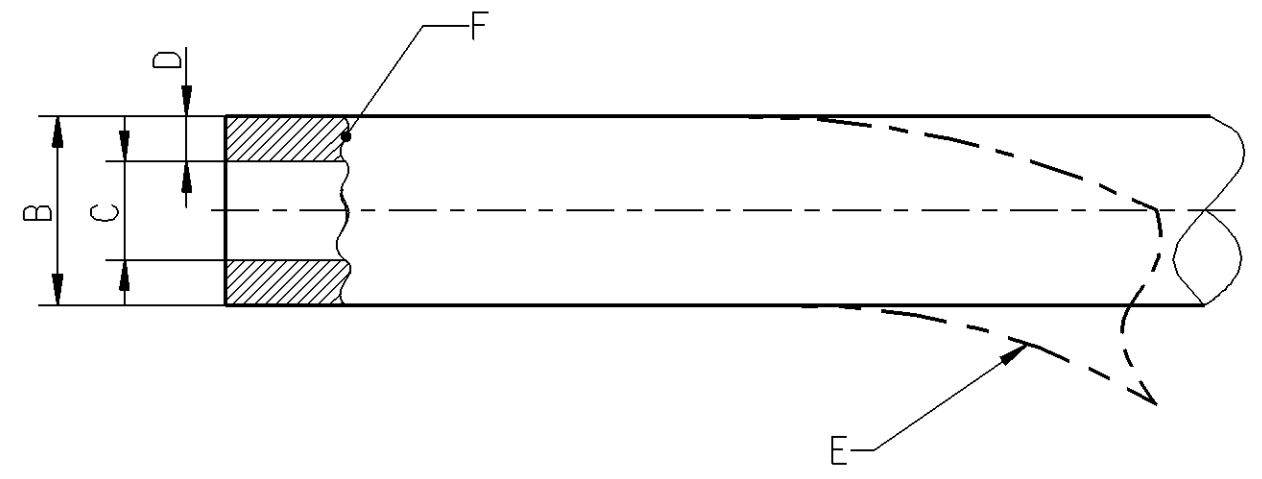
NOMINAL VALUE A	OUTER Ø B	INNER Ø C	WALL THICKNESS D	BENDING RADIUS E	MATERIAL ** (ACC. TO DIN 74324)		MANUFACTURER'S SYMBOL G	DATE OF MANUFACTURE H	TRADEMARK I	MASS	COLOUR
					PREFFERABLE	ALTERNATIVE					
18x2 (COIL 25 m)	18	14	MIN. 1.8	MIN. R100	PA11-PHL PA12-PHL PA12-HIPHL	PA11-PHLY PA12-PHLY	6-DIGIT SAP-SUPPLIER NO.	ACC. TO JED-226, METHOD B5 (YYWW)	ACC. TO JED-369, HEIGHT APPROX. 5 mm, IN A CONTRASTING COLOR APPROX. EVERY 300 TO 400 mm	102.54 g/m 2.56 kg PER ROLL	BLACK

Non è permesso consegnare o terzi o riprodurre questo documento, né utilizzare il contenuto o renderlo comunque noto a terzi
 without the express written consent of the manufacturer. Any unauthorized use, reproduction, distribution, or disclosure of this document is strictly prohibited and may result in legal action.
 E' vietato consegnare o terzi o riprodurre questo documento, né utilizzare il contenuto o renderlo comunque noto a terzi
 senza il permesso scritto espressa del produttore. Qualsiasi uso non autorizzato, riproduzione, distribuzione o divulgazione di questo documento è espressamente vietata e può comportare conseguenze legali.
 Copying of this document and giving it to others and the use or communication of the contents thereof, are forbidden without express
 written consent of the manufacturer. Any unauthorized use, reproduction, distribution, or disclosure of this document is strictly
 prohibited and may result in legal action. All rights reserved in the event of patent or registration of a utility model or design. This document is the subject of copyright.



MEDIUM: AIR
 MASS: SEE TABLE
 COLOUR: SEE TABLE

- * THERMAL RANGE OF APPLICATION: ACC. TO DIN 74324
- * SHORT-TERM RESISTANCE TO HEAT: ACC. TO DIN 74324
- * PERMISSIBLE WORKING PRESSURE: ACC. TO DIN 74324



GENERAL SPECIFICATIONS: DIN 74324; JED-226; JED-271; JED-367; JED-369; JED-762

General Specification: JED-334-0, Size ISO 14405-1 E				Copyright WABCO®		WABCO				
Further Technical Data: 893 000 001 0				Date	Signature					
Doc. Code:		Sheet: To		2012-10-12	Nerling	Pipe				
General Tolerances JED-261				2012-10-15	Luechou					
Range of Nominal Dimensions (± mm)				Expert		Kaufmann				
Class 1)	≤ 50	> 50 ≤ 180	> 180 ≤ 400	> 400	∠					
Fine	0.5	1.0	1.5	2.0	±3°	Material No.		Date of first issue: 2012-10-15		
Medium	1.0	2.0	3.0	4.0		828 251 118 6		Doc. Code	Language	Sheet
Coarse	2.0	3.5	5.0	6.5		005 EN 1/1				
Tapped Holes acc. -				Mass	Scale	ECN-No.		Revision	Techn. Resp.	Replacement for
1) Tolerance Class Applied Crossmarked				Size	CAD System	-		-	-	-

* INDICATED VALUES ARE GUIDELINE VALUES
 ** SEE RELEASE OF SUPPLIER, DOC CODE 050