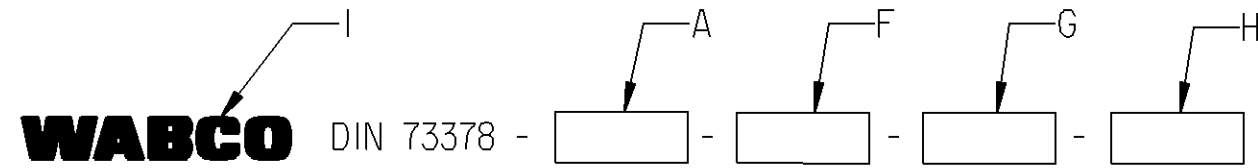


Non è permesso consegnare o terzi o riprodurre questo documento, né utilizzare il contenuto o renderlo comunque noto a terzi.  
 Toute communication ou reproduction de ce document, toute exploitation ou communication de son contenu sont interdites, sauf autorisation expresse.  
 E' vietato usare o terzi o riprodurre questo documento, né utilizzare il contenuto o renderlo comunque noto a terzi.  
 Toute communication ou reproduction de ce document, toute exploitation ou communication de son contenu sont interdites, sauf autorisation expresse.  
 E' vietato usare o terzi o riprodurre questo documento, né utilizzare il contenuto o renderlo comunque noto a terzi.

NOMINAL VALUE A	OUTER Ø B	INNER Ø C	WALL THICKNESS D	BENDING RADIUS E	MATERIAL ** (ACC. TO DIN 73378) F		MANUFACTURER'S SYMBOL G	DATE OF MANUFACTURE H	TRADEMARK I	MASS	COLOUR
					PREFERABLE	ALTERNATIVE					
8x1 (COIL 100 m)	8	6	MIN. 0.9	MIN. R40	PA11-PHL PA12-PHL PA12-HIPHL	PA11-PHLY PA12-PHLY	6-DIGIT SAP-SUPPLIER NO.	ACC. TO JED-226, METHOD B5 (YYWW)	ACC. TO JED-369, HEIGHT APPROX. 5 mm, IN A CONTRASTING COLOR APPROX. EVERY 300 TO 400 mm	22.43 g/m 2.24 kg PER ROLL	YELLOW

MARKING:

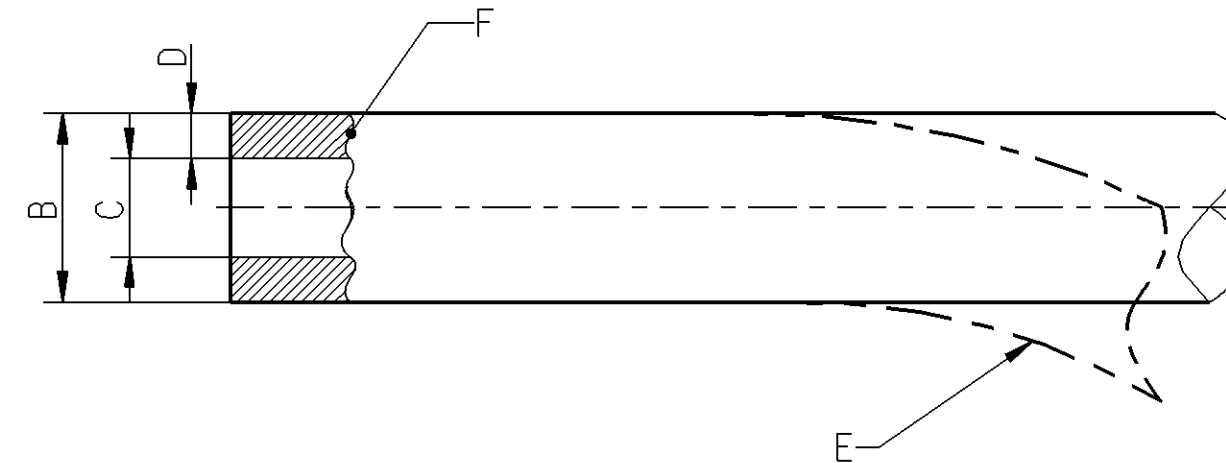


MEDIUM: AIR

MASS: SEE TABLE

COLOUR: SEE TABLE

- \* THERMAL RANGE OF APPLICATION: ACC. TO DIN 73378
- \* SHORT-TERM RESISTANCE TO HEAT: ACC. TO DIN 73378
- \* PERMISSIBLE WORKING PRESSURE: ACC. TO DIN 73378



GENERAL SPECIFICATIONS: DIN 73378; JED-226; JED-271; JED-367; JED-369

General Specification: JED-334-0; JED-762		Copyright WABCO®		<b>WABCO</b>		
Further Technical Data: 893 000 001 0		Date	Signature			
Doc. Code: Sheet: To		2012-07-12		Nerling		
General Tolerances JED-261		2012-08-23		Stephan		
Range of Nominal Dimensions ( ± mm)		Kaufmann		Expert		
Class 1)	≤ 50	> 50 ≤ 180	> 180 ≤ 400	> 400	±3°	
Fine	0.5	1.0	1.5	2.0	±3°	
Medium	1.0	2.0	3.0	4.0		
Coarse	2.0	3.5	5.0	6.5		
Tapped Holes acc.		A 2	Pro/E	Material No. 828 251 950 6		
1) Tolerance Class Applied Crossmarked		ECN-No.		Revision	Techn. Resp.	Date of first issue: 2012-08-23
		-		-	-	Doc. Code Language Sheet: 005 EN 1/1

\* INDICATED VALUES ARE GUIDELINE VALUES

\*\* SEE RELEASE OF SUPPLIER, DOC CODE 050