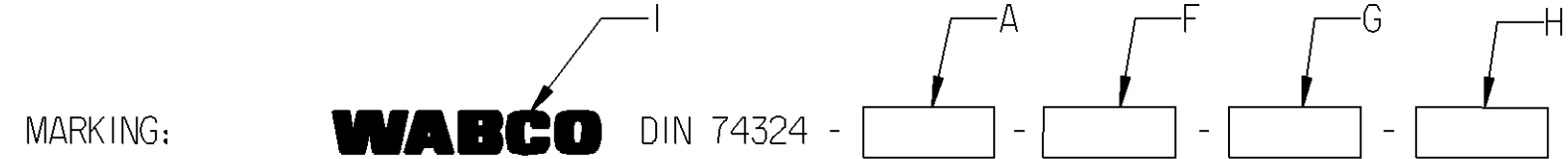


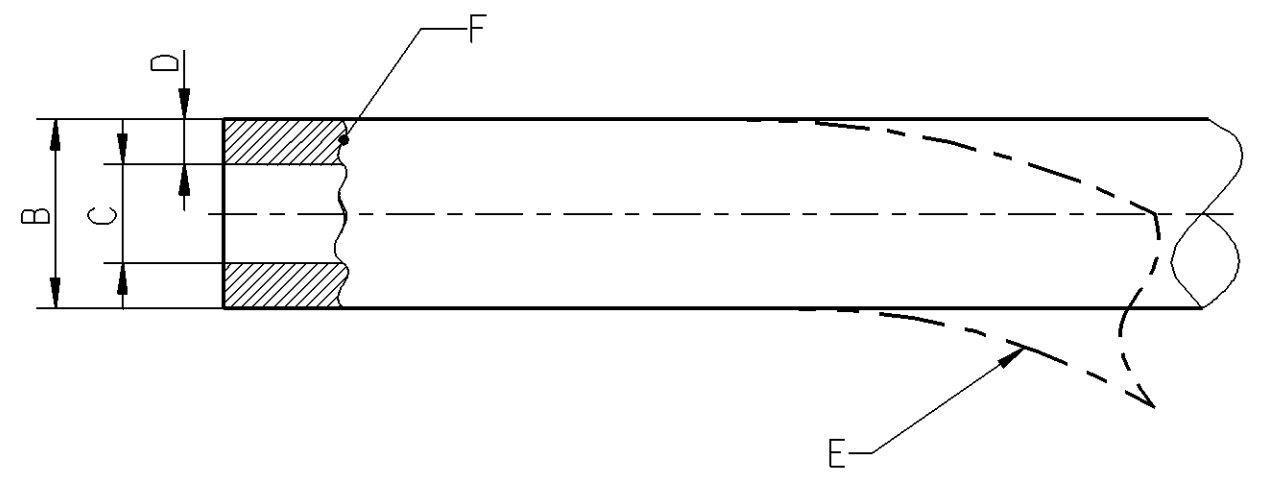
A
B

NOMINAL VALUE A ***	OUTER Ø B	INNER Ø C	WALL THICKNESS D	BENDING RADIUS E	MATERIAL ** (ACC. TO DIN 74324) F		MANUFACTURER'S SYMBOL G	DATE OF MANUFACTURE H	TRADEMARK I	MASS	COLOUR
					PREFERABLE	ALTERNATIVE					
15x2 (COIL 100 m)	15	11	-	-	PA11-PHL PA12-PHL PA12-HIPHL	PA11-PHLY PA12-PHLY	6-DIGIT SAP-SUPPLIER NO.	ACC. TO JED-226, METHOD B5 (YYWW)	ACC. TO JED-369, HEIGHT APPROX. 5 mm, IN A CONTRASTING COLOR APPROX. EVERY 300 TO 400 mm	44.86 g/m 4.49 kg PER ROLL	BLACK



MEDIUM: AIR
MASS: SEE TABLE
COLOUR: SEE TABLE

- * THERMAL RANGE OF APPLICATION: ACC. TO DIN 74324
- * SHORT-TERM RESISTANCE TO HEAT: ACC. TO DIN 74324
- * PERMISSIBLE WORKING PRESSURE: ACC. TO DIN 74324
- *** NOMINAL DIAMETER OF PIPE NOT LISTED IN DIN 74324,
BUT ALL OTHER CHARACTERISTICS ARE ACCORDING TO DIN VALUES



GENERAL SPECIFICATIONS: DIN 74324; JED-226; JED-271; JED-367; JED-369; JED-762

Non è permesso consegnare o terzi o riprodurre questo documento, né utilizzare il contenuto o renderlo comunque noto a terzi
 E' fatto riserva di tutti i diritti, espressi o non, in merito a brevetti o marchi.
 Copying of this document and giving it to others and the use or communication of the contents thereof, are forbidden without express
 written permission of the copyright owner. In the event of patent or registration of a utility model or design, this document is the subject of copyright.

Toute communication ou reproduction de ce document, toute exploitation ou communication de son contenu sont interdites, sauf
 autorisation expresse. Tout manquement à cette règle constitue un abus évident et expose son auteur au versement de dommages et
 intérêts. Tous droits de propriété industrielle réservés, notamment en matière de brevets et de modèles.
 Weitergabe sowie Vervielfältigung dieser Unterlagen, Verwertung und Mitteilung ihres Inhalts nicht gestattet, soweit
 nicht ausdrücklich zugestanden. Zuwiderhandlungen stellen einen strafrechtlichen Missbrauch dar und verpflichten zu Schadensersatz.
 Alle Rechte für den Fall der Patentierung oder Gebrauchsmuster-Eintragung vorbehalten.

* INDICATED VALUES ARE GUIDELINE VALUES
** SEE RELEASE OF SUPPLIER, DOC CODE 050

General Specification: JED-334-0, Size ISO 14405-1 E				Copyright WABCO®		WABCO							
Further Technical Data: 893 000 001 0				Date	Signature								
Doc. Code:		Sheet: To		2012-10-12	Drawn	Tube							
General Tolerances JED-261				2012-10-15	Checked								
Range of Nominal Dimensions (± mm)				Expert		Kaufmann							
Class 1)	≤ 50	> 50 ≤ 180	> 180 ≤ 400	> 400	±3°								
Fine	0,5	1,0	1,5	2,0	Mass	Scale		Material No.		Date of first issue: 2009-02-25			
Medium	1,0	2,0	3,0	4,0		-		828 251 977 6		Doc. Code	Language	Sheet	
Coarse	2,0	3,5	5,0	6,5		-		-		005	EN	1/1	
Tapped Holes acc. -				Size		CAD System		ECN-No.		Revision		Techn. Resp.	
1) Tolerance Class Applied Crossmarked				A 2		Pro/E		158973		- B		5690	
												100mm	

A
B
C
D
E
F
G
H