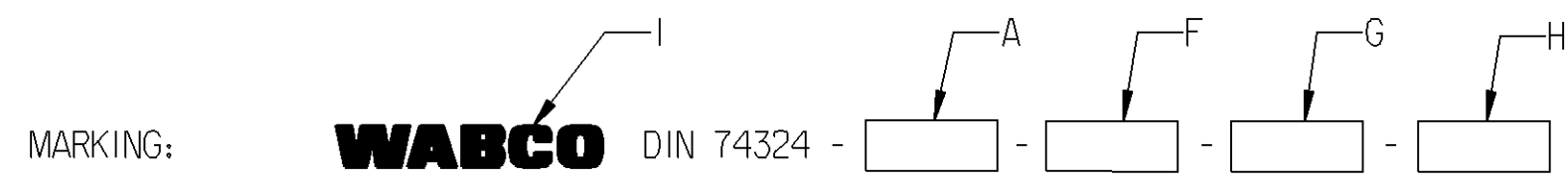


A  
B

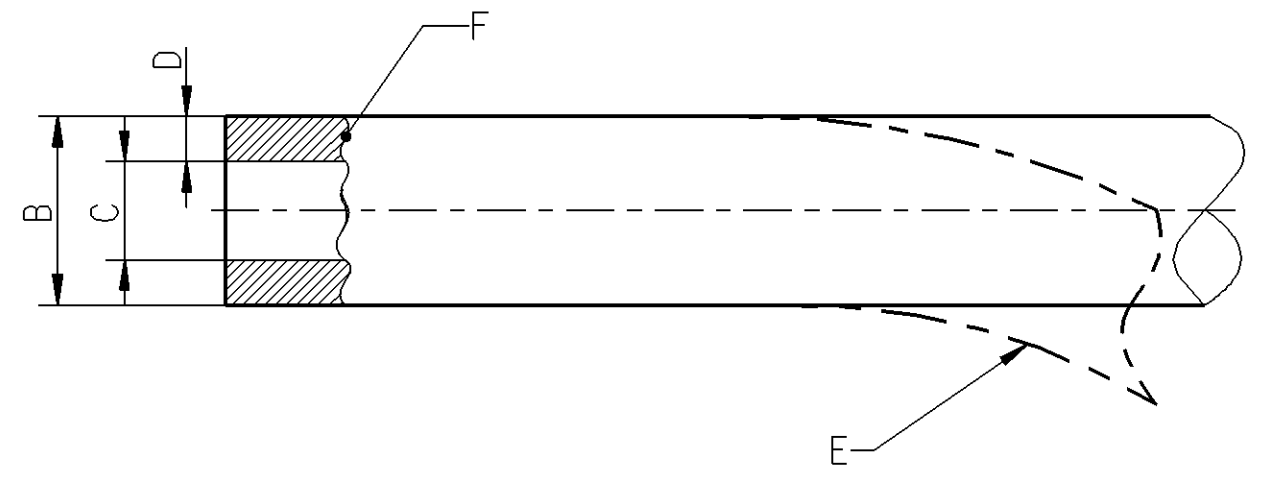
NOMINAL VALUE A ***	OUTER Ø B	INNER Ø C	WALL THICKNESS D	BENDING RADIUS E	MATERIAL ** (ACC. TO DIN 74324)		MANUFACTURER'S SYMBOL G	DATE OF MANUFACTURE H	TRADEMARK I	MASS	COLOUR
					PREFERABLE	ALTERNATIVE					
12x1.75 (COIL 25 m)	12	8.5	-	-	PA11-PHL PA12-PHL PA12-HIPHL	PA11-PHLY PA12-PHLY	6-DIGIT SAP-SUPPLIER NO.	ACC. TO JED-226, METHOD B5 (YYWW)	ACC. TO JED-369, HEIGHT APPROX. 5 mm, IN A CONTRASTING COLOR APPROX. EVERY 300 TO 400 mm	57.48 g/m 1.44 kg PER ROLL	BLACK

Non è permesso consegnare o terzi o riprodurre questo documento, né utilizzare il contenuto o renderlo comunque noto a terzi  
 without the express written consent of the manufacturer. Any unauthorized use, reproduction or distribution of this document is prohibited.  
 E' vietato usare o diffondere questo documento, o utilizzarne il contenuto o renderlo comunque noto a terzi senza il permesso scritto  
 dell'azienda produttrice. Qualsiasi uso non autorizzato, riproduzione o distribuzione di questo documento è vietata.  
 Toute communication ou reproduction de ce document, toute exploitation ou communication de son contenu sont interdites, sauf  
 autorisation expresse. Toute réimpression ou autre réimpression ou utilisation non autorisée sans la permission de l'éditeur est  
 interdite. Toute réimpression ou utilisation non autorisée sans la permission de l'éditeur est interdite.  
 Weitergabe sowie Vervielfältigung dieses Dokuments, Verwertung und Mitteilung ihres Inhalts nicht gestattet, soweit  
 nicht ausdrücklich zugelassen. Zuwiderhandlungen stellen einen strafrechtlichen Missbrauch dar und verpflichten zu Schadensersatz.  
 Alle Rechte für den Fall der Patentierung oder Gebrauchsmuster-Eintragung vorbehalten.



MEDIUM: AIR  
 MASS: SEE TABLE  
 COLOUR: SEE TABLE

- \* THERMAL RANGE OF APPLICATION: ACC. TO DIN 74324
- \* SHORT-TERM RESISTANCE TO HEAT: ACC. TO DIN 74324
- \* PERMISSIBLE WORKING PRESSURE: ACC. TO DIN 74324
- \*\*\* NOMINAL DIAMETER OF PIPE NOT LISTED IN DIN 74324,  
 BUT ALL OTHER CHARACTERISTICS ARE ACCORDING TO DIN VALUES



GENERAL SPECIFICATIONS: DIN 74324; JED-226; JED-271; JED-367; JED-369; JED-762

General Specification: JED-334-0, Size ISO 14405-1 E		Copyright WABCO®		<b>WABCO</b>			
Further Technical Data: 893 000 001 0		Date	Signature				
Doc. Code:	Sheet:	To	Drawn	Pipe			
General Tolerances JED-261			2012-10-15				Nerling
Range of Nominal Dimensions ( ± mm)			Checked	Expert			
Class 1)	≤ 50	> 50 ≤ 180	2012-10-15				Luechou
	≤ 180	> 180 ≤ 400	Kaufmann				
Fine	0.5	1.0	1.5	2.0	Material No.		
Medium	1.0	2.0	3.0	4.0	Date of first issue: 2012-10-15		
Coarse	2.0	3.5	5.0	6.5	Doc. Code Language Sheet		
Tapped Holes acc. -				Mass	Scale	828 252 112 6	
1) Tolerance Class Applied Crossmarked				Size	CAD System	005 EN 1/1	
				A 2	Pro/E	ECN-No.	Revision
						Techn. Resp.	Replacement for
						5690	

\* INDICATED VALUES ARE GUIDELINE VALUES  
 \*\* SEE RELEASE OF SUPPLIER, DOC CODE 050