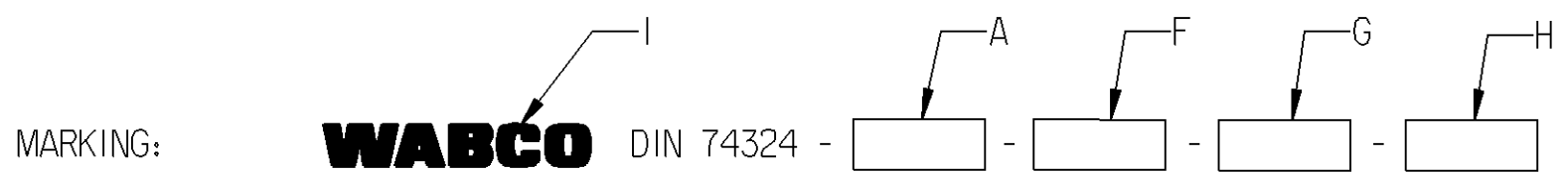


A
B

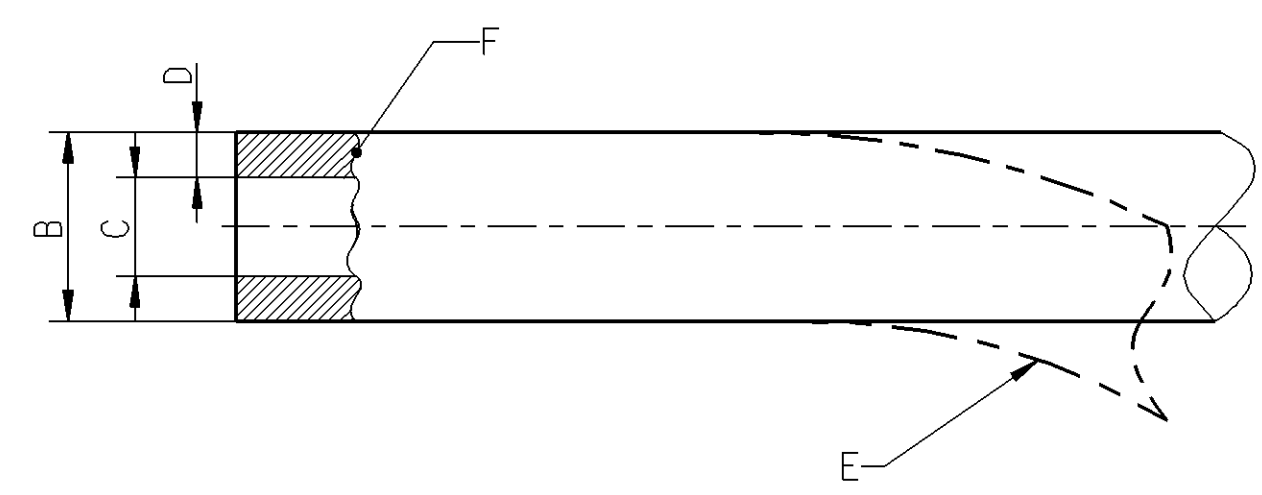
NOMINAL VALUE A	OUTER Ø B	INNER Ø C	WALL THICKNESS D	BENDING RADIUS E	MATERIAL ** (ACC. TO DIN 74324) F		MANUFACTURER'S SYMBOL G	DATE OF MANUFACTURE H	TRADEMARK I	MASS	COLOUR
					PREFERABLE	ALTERNATIVE					
8x1 (COIL 500 m)	8	6	MIN. 0.9	MIN. R40	PA11-PHL PA12-PHL PA12-HIPHL	PA11-PHLY PA12-PHLY	6-DIGIT SAP-SUPPLIER NO.	ACC. TO JED-226, METHOD B5 (YYWW)	ACC. TO JED-369, HEIGHT APPROX. 5 mm, IN A CONTRASTING COLOR APPROX. EVERY 300 TO 400 mm	22.43 g/m 11.22 kg PER ROLL	BLACK

Non è permesso consegnare o terzi o riprodurre questo documento, né utilizzare il contenuto o renderlo comunque noto a terzi.
 E' vietata espressamente la ristampa o l'uso non autorizzato senza permesso scritto dalla WABCO. E' vietata espressamente la ristampa o l'uso non autorizzato senza permesso scritto dalla WABCO.
 Toute communication ou reproduction de ce document, toute exploitation ou communication de son contenu sont interdites, sauf autorisation expresse.
 Toute communication ou reproduction de ce document, toute exploitation ou communication de son contenu sont interdites, sauf autorisation expresse.
 Weitergabe sowie Vervielfältigung dieses Unterlagen, Verwertung und Mitteilung ihres Inhalts nicht gestattet, soweit nicht ausdrücklich zugelassen.
 Alle Rechte für den Fall der Patentierung oder Gebrauchsmuster-Eintragung vorbehalten.



MEDIUM: AIR
 MASS: SEE TABLE
 COLOUR: SEE TABLE

- * THERMAL RANGE OF APPLICATION: ACC. TO DIN 74324
- * SHORT-TERM RESISTANCE TO HEAT: ACC. TO DIN 74324
- * PERMISSIBLE WORKING PRESSURE: ACC. TO DIN 74324



GENERAL SPECIFICATIONS: DIN 74324; JED-226; JED-271; JED-367; JED-369; JED-762

General Specification: JED-334-0, Size ISO 14405-1 E		Copyright WABCO®		WABCO					
Further Technical Data: 893 000 001 0		Date					Signature		
Doc. Code: Sheet: To		2012-10-15		Nerling		Tube			
General Tolerances JED-261		Checked		Luechou					
Range of Nominal Dimensions (± mm)		Expert		Kaufmann					
Class 1)	≤ 50	> 50 ≤ 180	> 180 ≤ 400	> 400	±3°				
Fine	0.5	1.0	1.5	2.0					
Medium	1.0	2.0	3.0	4.0					
Coarse	2.0	3.5	5.0	6.5					
Tapped Holes acc. -		Mass		Scale		Material No.		Date of first issue: 2008-10-23	
1) Tolerance Class Applied Crossmarked		- kg		-		828 252 113 6		Doc. Code Language Sheet	
		Size CAD System		A 2 Pro/E		ECN-No.		Revision	
						158973		- B 5690	
						Techn. Resp.		Replacement for	

* INDICATED VALUES ARE GUIDELINE VALUES
 ** SEE RELEASE OF SUPPLIER, DOC CODE 050