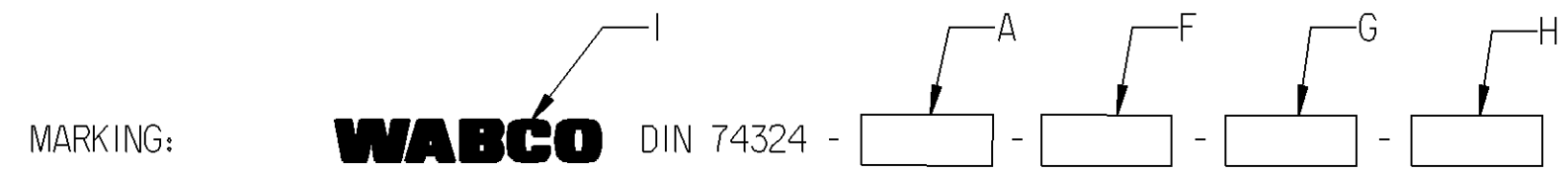
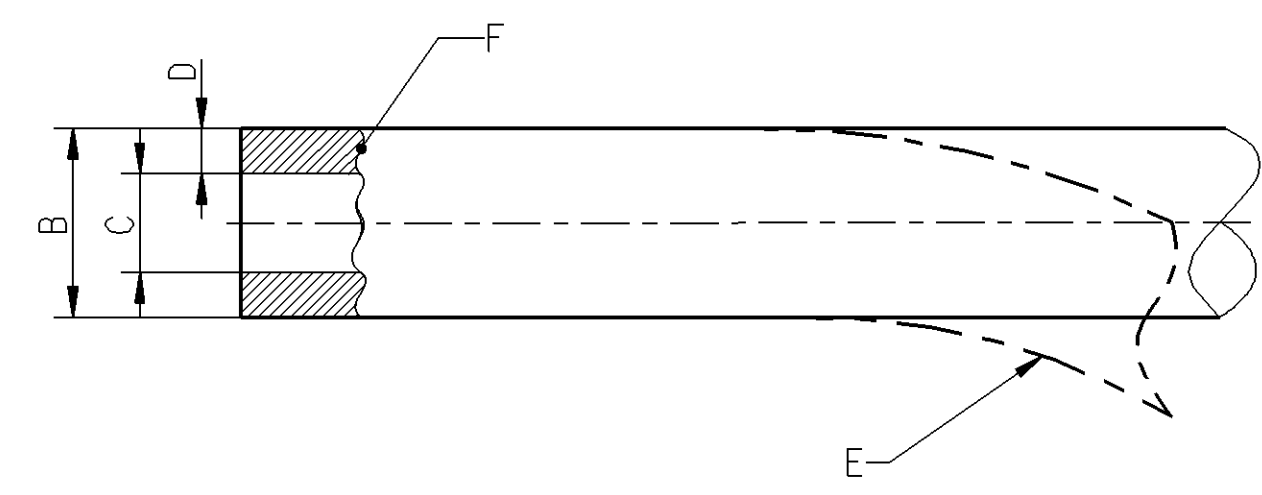


NOMINAL VALUE A	OUTER Ø B	INNER Ø C	WALL THICKNESS D	BENDING RADIUS E	MATERIAL ** (ACC. TO DIN 74324) F		MANUFACTURER'S SYMBOL G	DATE OF MANUFACTURE H	TRADEMARK I	MASS	COLOUR
					PREFERRED	ALTERNATIVE					
10x1 (COIL 500 m)	10	8	MIN. 0.9	MIN. R60	PA11-PHL PA12-PHL PA12-HIPL	PA11-PHLY PA12-PHLY	6-DIGIT SAP-SUPPLIER NO.	ACC. TO JED-226, METHOD B5 (YYWW)	ACC. TO JED-369, HEIGHT APPROX. 5 mm, IN A CONTRASTING COLOR APPROX. EVERY 300 TO 400 mm	28.84 g/m 14.42 kg PER ROLL	BLACK



MEDIUM: AIR
 MASS: SEE TABLE
 COLOUR: SEE TABLE

- * THERMAL RANGE OF APPLICATION: ACC. TO DIN 74324
- * SHORT-TERM RESISTANCE TO HEAT: ACC. TO DIN 74324
- * PERMISSIBLE WORKING PRESSURE: ACC. TO DIN 74324



GENERAL SPECIFICATIONS: DIN 74324; JED-226; JED-271; JED-367; JED-369; JED-762

Non è permesso consegnare o terzi o riprodurre questo documento, né utilizzare il contenuto o renderlo comunque noto a terzi
 E' vietata espressamente la ristampa o l'uso non autorizzato senza permesso scritto dalla WABCO. E' vietata espressamente la ristampa o l'uso non autorizzato senza permesso scritto dalla WABCO. E' vietata espressamente la ristampa o l'uso non autorizzato senza permesso scritto dalla WABCO.
 Toute communication ou reproduction de ce document, toute exploitation ou communication de son contenu sont interdites, sauf autorisation expresse. Toute réimpression ou autre usage non autorisé est expressément formellement interdit sans la permission écrite de la WABCO.
 Weitergabe sowie Vervielfältigung dieser Unterlagen, Verwertung und Mitteilung ihres Inhalts nicht gestattet, soweit nicht ausdrücklich zugelassen. Zuwiderhandlungen stellen einen strafrechtlichen Missbrauch dar und verpflichten zu Schadensersatz. Alle Rechte für den Fall der Patentierung oder Gebrauchsmuster-Eintragung vorbehalten.

* INDICATED VALUES ARE GUIDELINE VALUES
 ** SEE RELEASE OF SUPPLIER, DOC CODE 050

General Specification: JED-334-0, Size ISO 14405-1 E				Copyright WABCO®		WABCO		
Further Technical Data: 893 000 001 0				Date	Signature	Tube		
Doc. Code:		Sheet: To		2012-10-15	Nerling			
General Tolerances JED-261				Checked				
Range of Nominal Dimensions (± mm)				2012-10-15		Luechou		
Class 1)	≤ 50	> 50 ≤ 180	> 180 ≤ 400	> 400	Expert			
Fine	0.5	1.0	1.5	2.0	Kaufmann			
Medium	1.0	2.0	3.0	4.0	Mass	Scale	Material No.	
Coarse	2.0	3.5	5.0	6.5	-	-	828 252 114 6	
Tapped Holes acc. -				Size	CAD System	Date of first issue: 2008-10-23		
1) Tolerance Class Applied Crossmarked				A 2	Pro/E	ECN-No.	Revision	Techn. Resp.
						158973	- B	5690
						Doc. Code		Language
						005		EN
						Sheet		1/1