

Non e permesso consegnare a terzi o riprodurre questo documento, ne utilizzare il contenuto o renderlo comunque noto a terzi senza autorizzazione esplicita. Ogni infrazione costituira un evidente abuso e comportera il risarcimento dei danni subiti. E' fatto riserva di tutti i diritti derivanti da brevetti o modelli.

Toute communication ou reproduction de ce document, toute exploitation ou communication de son contenu sont interdites, sauf autorisation expresse. Tout manquement a cette regle constitue un abus evident et expose son auteur au versement de dommages et interets. Tous droits de propriete industrielle reserves, notamment en matiere de brevets et de modesles.

Copying of this document and giving it to others and the use or communication of the contents thereof, are forbidden without express authority. Controvention of this restriction will constitute an evident abuse and result in a liability to the payment of damages. All rights are reserved in the event of the grant of patent or registration of a utility model or design. This document is the subject of copyright.

Weitergabe sowie Vervielfaeligung dieser Unterlage, Verwertung und Mitteilung ihres Inhalts nicht gestattet, soweit nicht ausdruecklich zugestanden. Zuwiderhandlungen stellen einen offensichtlichlichen Misbrauch dar und verpflichten zu Schadenersatz. Alle Rechte fuer den Fall der Patenterteilung oder Gebrauchsmuster-Eintragung vorbehalten.

1	2	3	4	5	6	7	8
A	B	C	D	E	F	G	H
Ø11x3,5 (ROLL 40m)	Ø11	Ø18	3.5	≡ 70		BLACK SMOOTH	ELASTOMER ALTERNATIVE RUBBER
							FABRIC ALTERNATIVE PES
							ELASTOMER ALTERNATIVE RUBBER

MEDIUM:  
MEDIUM:  
FLUIDE:  
FLUIDO:

AIR  
LUFT  
AIR  
AIRA

THERMAL RANGE OF APPLICATION:  
THERMISCHER ANWENDUNGSBEREICH:  
GAMME D'APPLICATION THERMIQUE:  
CAMPO TERMICO D'APPLICAZIONE:

-40 °C TO +70 °C

SHORT-TERM RESISTANCE TO HEAT:  
KURZZEITIG:  
RESISTANCE THERMIQUE TEMPORAIRE:  
RESISTENZA TERMICA PER BREVE PERIODO:

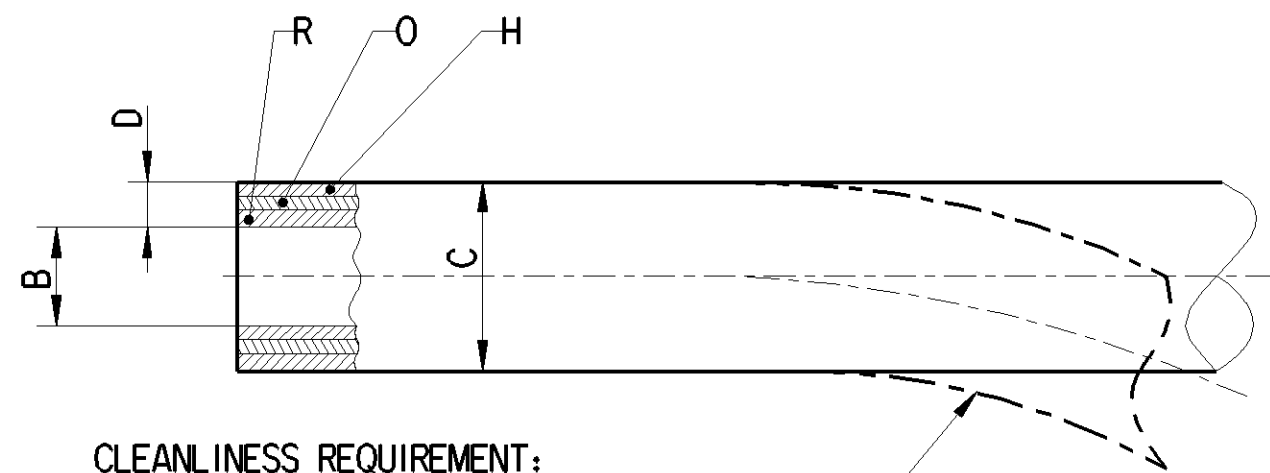
ADMISSIBLE WORKING PRESSURE:  
ZULAESSIGER BERTRIEBSDRUCK:  
PRESSION D'UTILISATION PERMISSIBLE:  
PRESSIONE DI ESERCIZIO PERMISSIBLE:

Pe < 10 bar

MARKING:  
MARKIERUNG:  
MARQUAGE:  
MARCATURA:

**WABCO** DIN74310 - 11 - WWYY - SUPPLIER LOGO

TRADEMARK ACC. TO JED-369 - HEIGHT APPROX. 5 mm  
IN A CONTRASTING COLOR



CLEANLINESS REQUIREMENT:  
NO PARTICLES >1MM ALLOWED ACC. TO  
MANDATORY STANDARD: JED-334 AND JED-593

AREA: FOR THE WHOLE PART (SPECIAL AGREEMENTS POSSIBLE:  
TO BE AGREED WITH PRODUCT ENGINEERING)

GENERAL SPECIFICATION: DIN74310 ; JED-848 ; JED-762 ; JED-220

VALIDATED IN ACCORDANCE WITH DIN 74310

General Specification: JED-334-1, Size ISO 14405 LP		Copyright WABCO®		<b>WABCO</b>	
Further Technical Data: 828 876 500 O		Date	Signature		
Doc. Code: O35 Sheet: To		Drawn		HOSE SCHLAUCH TUYAU FLEXIBLE TUBO FLESSIBILE	
General Tolerances JED-261		2021-01-20 <b>Balogo</b>			
Range of Nominal Dimensions ( ± mm)		Checked		Date of first issue: <b>2007-10-29</b>	
Class 1) ≤ 50 > 50 ≤ 180 > 180 ≤ 400 > 400		2021-01-20 <b>Szczulkowski</b>			
Fine 0.5 1.0 1.5 2.0		Expert		Material No.	
Medium <b>X</b> 1.0 2.0 3.0 4.0 ±3°		SzcZulkowski		828 876 411 6	
Coarse 2.0 3.5 5.0 6.5		Mass Scale		Doc.Code Language Sheet	
Tapped Holes acc. -		9.64 KG /		005 ML 1/1	
1) Tolerance Class Applied Crossmarked		Size CAD System		ECN-No. Revision Techn. Resp. Replacement for	
		A 3 CREO		178920 3 x B 5690 -	

1	2	3	4	5	6	7	8
---	---	---	---	---	---	---	---