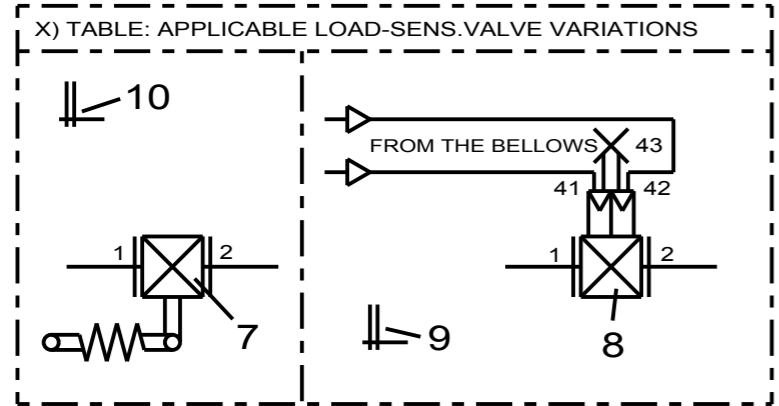
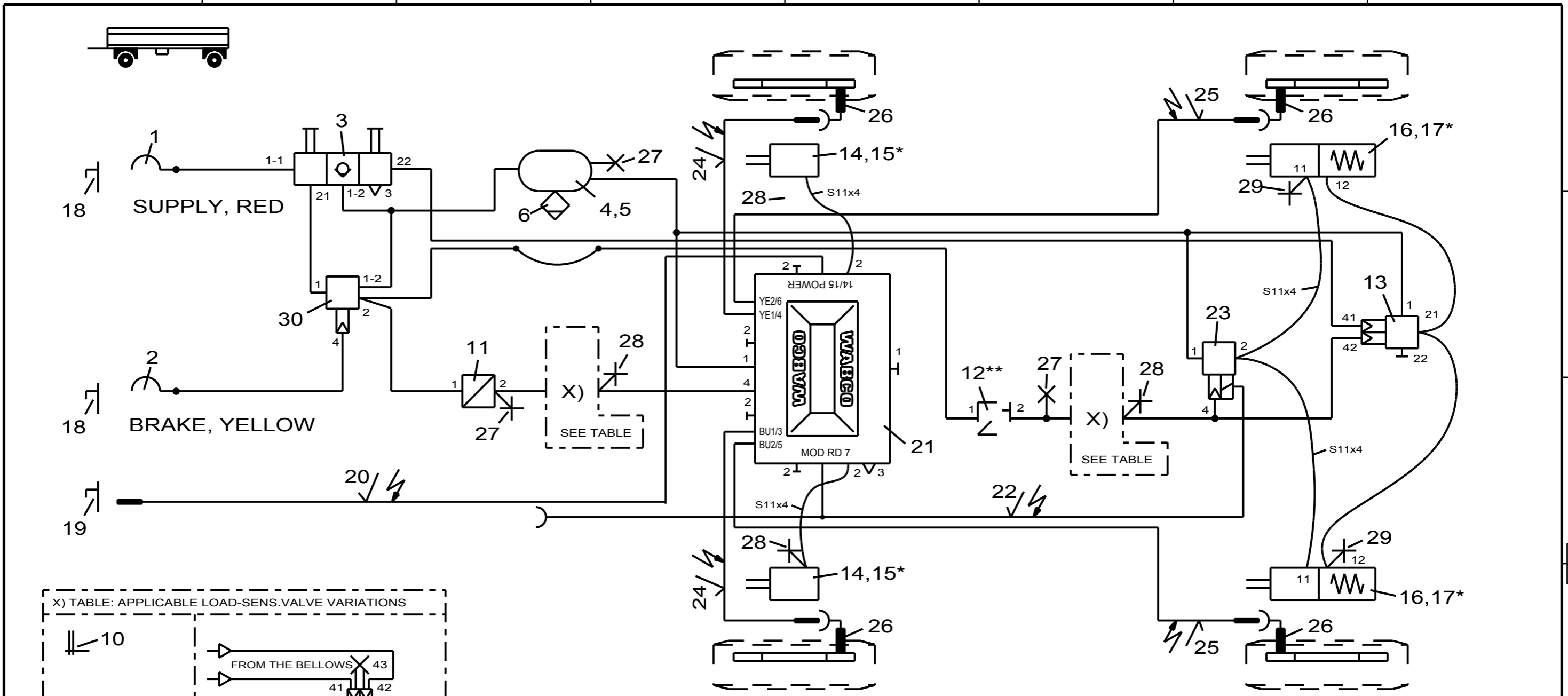


Non e permesso consegnare a terzi o riprodurre questo documento, ne utilizzarne il contenuto o renderlo comunque noto a terzi senza autorizzazione esplicita. Ogni infrazione costituirà un evidente abuso e comporterà il risarcimento dei danni subiti. Effetta riserva di tutti i diritti derivanti da brevetti o modelli.

Copying of this document and giving it to others and the use or communication of the contents thereof, are forbidden without express authority. Contravention of this restriction will constitute an evident abuse and result in a liability to the payment of damages. All rights are reserved in the event of the grant of patent or registration of a utility model or design. This document is the subject of copyright.

Toute communication ou reproduction de ce document, toute exploitation ou communication de son contenu sont interdites, sauf autorisation expresse. Tout manquement a cette règle constitue un abus évident et expose son auteur au versement de dommages et intérêts. Tous droits de propriété industrielle réservés, notamment en matière de brevets et de modèles.

Weitergabe sowie Vervielfältigung dieser Unterlage, Verwendung und Mitteilung ihres Inhalts nicht gestattet, soweit nicht ausdrücklich zugestanden. Zuwiderhandlungen stellen einen offensichtlichen Missbrauch dar und verpflichten zu Schadenersatz. Alle Rechte rüden Fall der Patentierung oder Gebrauchsmuster-Eintragung vorbehalten.



AIM IS:
 IDENTIC DEAD VOLUMINA OF ALL BRAKE ACTUATORS PLUS CORRESPONDING BRAKE HOSES BASED ON AN ABS-RELAY VALVE

** OPTIONAL
 * NOT APPLICABLE FOR DISC-BRAKES
 WIRING DIAGRAM: SEE 841 801 932 0
 OR/AND 841 801 933 0

15	2	KIT	*	423 ... 53. 2	30	1	TRAILER-BRAKE VALVE		971 002 ... 0
14	2	BRAKE CHAMBER		423 0	29	2	TEST CONNECTION		463 703 036 0
13	1	OVERLOAD PROTEC.-RV		973 011 201 0	28	4	TEST CONNECTION		463 703 120 0
12	1	PRESS.LIMITING V.	**	475 010 ... 0	27	3	TEST CONNECTION		463 703 115 0
11	1	ADAPTOR VALVE		975 00. 0.. 0	26	4	ABS-SENSOR		441 032 ... 0
10	1	TAG "SETTING VALUE OF LSV" MECH.	X)	899 144 630 4	25	2	EXTENSION CABLE FOR SENSOR		449 712 ... 0
9	1	TAG "SETTING VALUE OF LSV" AIR	X)	899 144 631 4	24	2	EXTENSION CABLE FOR SENSOR		449 712 ... 0
8	2	LOAD-SENS.V.W.INTEGR TEST VALVE	X)	475 714 50. 0	23	1	ABS-RELAY VALVE 24V		472 195 031 0
7	2	LOAD-SENS.V.W.INTEGR FLEX.ARM	X)	475 713 50. 0	22	1	Y-SOLENOID CABLE		449 616 ... 0
6	1	DRAIN VALVE		934 300 001 0	21	1	VCS2-TRAIL.-MODULATOR 24V		400 500 081 0
5	2	HOSE CLAMP		451 999 ... 2	20	1	ABS-PLUG WITH CABLE 24V		449 226 ... 0
4	1	AIR RESERVOIR		950 0	19	1	ABS-PARKING BUSH 24V		446 008 600 2
3	1	DOUBLE RELEASE VALVE		963 001 951 0	18	2	DUMMY COUPLING WITH FIXTURE		452 402 000 0
2	1	COUPLING HEAD W. INT. LINE FILTER		952 201 003 0	17	2	KIT *		423 903 532 2
1	1	COUPLING HEAD W. INT. LINE FILTER		952 201 004 0	16	2	TRISTOP BRAKE ACTUATOR		925 0
Pos.	Pcs.	Denomination		Product Identification No.	Pos.	Pcs.	Denomination		Product Identification No.

Copyright WABCO

WABCO

TWO LINE-AIR BRAKING SYSTEM FOR 2-AXLES-TRAILER WITH ABS VCS2 4S/3M

2xLOAD-SENS.VALVE, OPTION. ME./AIR

Date	Signature				
07-07-19	APITHY				
07-07-19	CHRONIS				
BURMESTER					
Mass	Scale	Material No.	Date of first issue:05-06-06		
KG		841 601 182 0	Doc.Code	Language	Sheet
Size	CAD System		002	EN	1/1
A 3	Pro/E	ECN-No.	Revision	Techn. Resp.	Replacement for
		124027	A	4990	