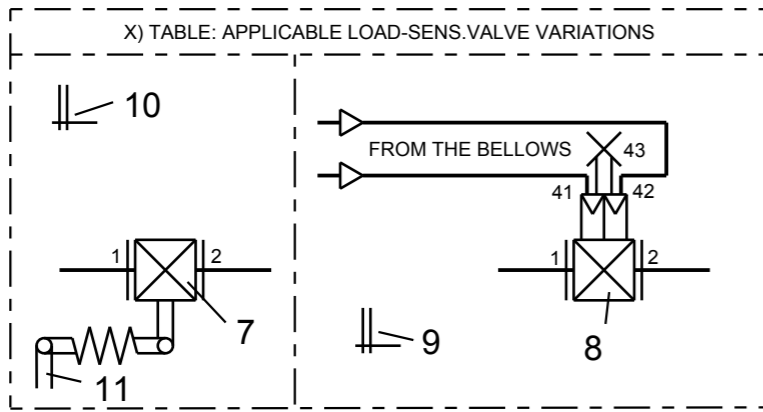
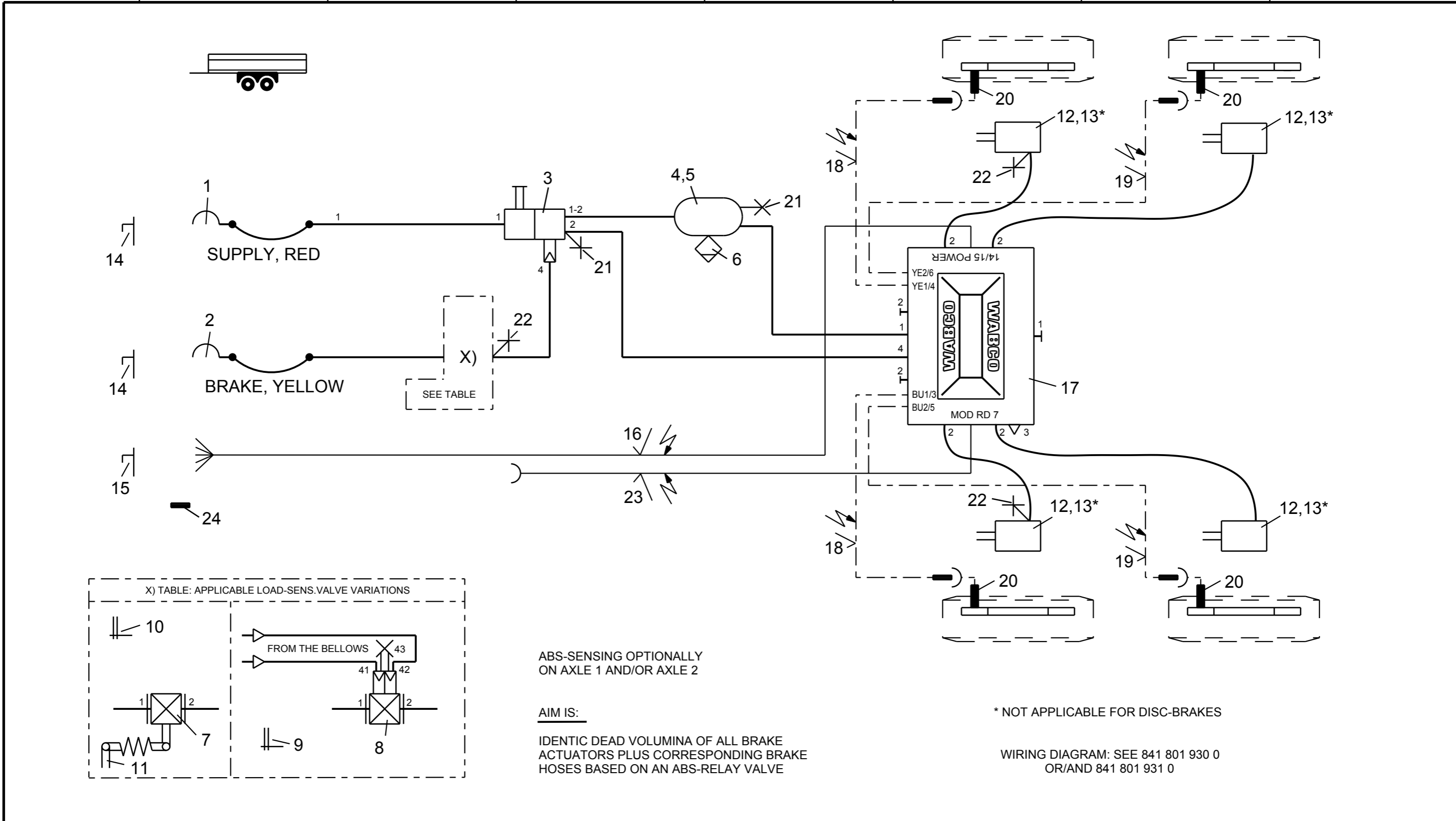


Non e permesso consegnare a terzi o riprodurre questo documento, ne utilizzarne il contenuto o renderlo comunque noto a terzi senza autorizzazione esplicita. Ogni infrazione costituirà un evidente abuso e comporterà il risarcimento dei danni subiti. E' fatta riserva di tutti i diritti derivanti da brevetti o modelli.

Copying of this document and giving it to others and the use or communication of the contents thereof, are forbidden without express authority. Contravention of this restriction will constitute an evident abuse and result in a liability to the payment of damages. All rights are reserved in the event of the grant of patent or registration of a utility model or design. This document is the subject of copyright.

Toute communication ou reproduction de ce document, toute exploitation ou communication de son contenu sont interdites, sauf autorisation expresse. Tout manquement a cette regle constitue un abus evident et expose son auteur au versement de dommages et interets. Tous droits de propriete industrielle reserves, notamment en matiere de brevets et de modeles.

Weitergabe sowie Vervielfaeltigung dieser Unterlage, Verwertung und Mitteilung ihres Inhalts nicht gestattet, soweit nicht ausdruecklich zugestanden. Zuwiderhandlungen stellen einen offensichtlichen Missbrauch dar und verpflichten zu Schadenersatz. Alle Rechte fuer den Fall der Patentierung oder Gebrauchsmuster-Eintragung vorbehalten.



ABS-SENSING OPTIONALLY ON AXLE 1 AND/OR AXLE 2

AIM IS:

IDENTIC DEAD VOLUMINA OF ALL BRAKE ACTUATORS PLUS CORRESPONDING BRAKE HOSES BASED ON AN ABS-RELAY VALVE

\* NOT APPLICABLE FOR DISC-BRAKES

WIRING DIAGRAM: SEE 841 801 930 0 OR/AND 841 801 931 0

12	4	BRAKE CHAMBER		423 ... .. 0	24	1	ABS-PLUG	12V	446 008 395 2
11	1	LINKAGE FOR LSV		433 401 004 0	23	1	ABS-DIAGNOSTIC CABLE		449 615 0.0 0
10	1	TAG "SETTING VALUE OF LSV" MECH.	X)	899 144 630 4	22	3	TEST CONNECTION		463 703 120 0
9	1	TAG "SETTING VALUE OF LSV" AIR	X)	899 144 631 4	21	2	TEST CONNECTION		463 703 115 0
8	1	LOAD-SENS.V.W.INTEGR TEST VALVE	X)	475 714 5.. 0	20	4	ABS-SENSOR		441 032 ... 0
7	1	LOAD-SENS.V.W.INTEGR FLEX.ARM	X)	475 713 50. 0	19	2	EXTENSION CABLE FOR SENSOR		449 712 ... 0
6	1	DRAIN VALVE		934 300 001 0	18	2	EXTENSION CABLE FOR SENSOR		449 712 ... 0
5	2	HOSE CLAMP		451 999 ... 2	17	1	VCS2-TRAILER-MODULATOR	12V	400 500 083 0
4	1	AIR RESERVOIR		950 ... .. 0	16	1	ABS-SUPPLY (POWER) CABLE	12V	449 345 1.0 0
3	1	TRAILER BRAKE VALVE		971 002 ... 0	15	1	ABS-PARKING BUSH	12V	446 008 600 2
2	1	COUPLING HEAD W.INT. LINE FILTER		952 201 003 0	14	2	DUMMY COUPLING W.FIXTURE		452 402 000 0
1	1	COUPLING HEAD W.INT. LINE FILTER		952 201 004 0	13	4	KIT	*	423 ... 53. 2
Pos.	Pcs.	Denomination		Product Identification No.	Pos.	Pcs.	Denomination		Product Identification No.

Copyright WABCO®

Date: 2011-11-01 Signature: BURMESTER

Drawn: BURMESTER

Checked: CHRONIS

Expert: BURMESTER

Material No. 841 601 266 0

Date of first issue: 2011-11-01

Doc.Code: 002 Language: EN Sheet: 1/1

ECN-No.: - Revision: 4990 Techn. Resp.: Replacement for