

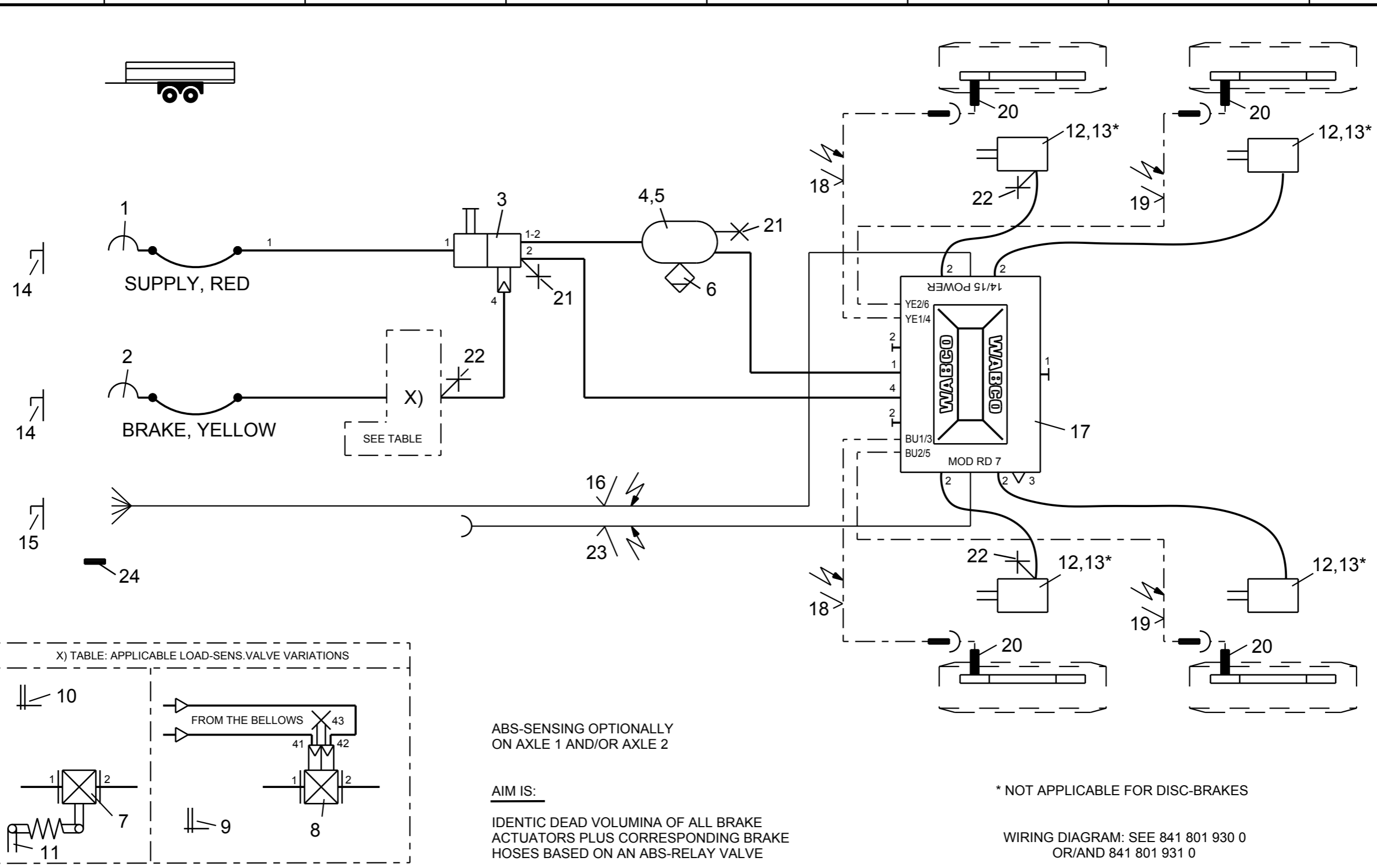
Non e permesso consegnare a terzi o riprodurre questo documento, ne utilizzarne il contenuto o renderlo comunque noto a terzi senza autorizzazione esplicita. Ogni infrazione costituirà un evidente abuso e comporterà il risarcimento dei danni subiti. E' fatta riserva di tutti i diritti derivanti da brevetti o modelli.

Copying of this document and giving it to others and the use or communication of the contents thereof, are forbidden without express authority. Contravention of this restriction will constitute an evident abuse and result in a liability to the payment of damages. All rights are reserved in the event of the grant of patent or registration of a utility model or design. This document is the subject of copyright.

Toute communication ou reproduction de ce document, toute exploitation ou communication de son contenu sont interdites, sauf autorisation expresse. Tout manquement a cette règle constitue un abus évident et expose son auteur au versement de dommages et intérêts. Tous droits de propriété industrielle réservés, notamment en matière de brevets et de modèles.

Weitergabe sowie Vervielfältigung dieser Unterlage, Verwertung und Mitteilung ihres Inhalts nicht gestattet, soweit nicht ausdrücklich zugestanden. Zuwiderhandlungen stellen einen offensichtlichen Missbrauch dar und verpflichten zu Schadenersatz. Alle Rechte rüden Fall der Patentierung oder Gebrauchsmuster-Eintragung vorbehalten.

1 2 3 4 5 6 7 8



12	4	BRAKE CHAMBER		423 0	24	1	ABS-PLUG	12V	446 008 395 2
11	1	LINKAGE FOR LSV		433 401 004 0	23	1	ABS-DIAGNOSTIC CABLE		449 615 0.0 0
10	1	TAG "SETTING VALUE OF LSV" MECH.	X)	899 144 630 4	22	3	TEST CONNECTION		463 703 120 0
9	1	TAG "SETTING VALUE OF LSV" AIR	X)	899 144 631 4	21	2	TEST CONNECTION		463 703 115 0
8	1	LOAD-SENS.V.W.INTEGR TEST VALVE	X)	475 714 5.. 0	20	4	ABS-SENSOR		441 032 ... 0
7	1	LOAD-SENS.V.W.INTEGR FLEX.ARM	X)	475 713 50. 0	19	2	EXTENSION CABLE FOR SENSOR		449 712 ... 0
6	1	DRAIN VALVE		934 300 001 0	18	2	EXTENSION CABLE FOR SENSOR		449 712 ... 0
5	2	HOSE CLAMP		451 999 ... 2	17	1	VCS2-TRAILER-MODULATOR	12V	400 500 083 0
4	1	AIR RESERVOIR		950 0	16	1	ABS-SUPPLY (POWER) CABLE	12V	449 345 1.0 0
3	1	TRAILER BRAKE VALVE		971 002 ... 0	15	1	ABS-PARKING BUSH	12V	446 008 600 2
2	1	COUPLING HEAD W.INT. LINE FILTER		952 201 003 0	14	2	DUMMY COUPLING W.FIXTURE		452 402 000 0
1	1	COUPLING HEAD W.INT. LINE FILTER		952 201 004 0	13	4	KIT	*	423 ... 53. 2
Pos.	Pcs.	Denomination		Product Identification No.	Pos.	Pcs.	Denomination		Product Identification No.

Copyright WABCO®

Date: 2011-11-01 Signature: BURMESTER

Drawn: BURMESTER

Checked: CHRONIS

Expert: BURMESTER

WABCO

TWO LINE-AIR BRAKING SYSTEM

FOR 2-AXLES-CENTRALAXLE TRAILER WITH ABS VCS2 2S/2M OR 4S/2M 12V LOAD-SENSING VALVE, OPTIONALLY MECH./AIR

Mass: KG Scale: CAD System: Pro/E

Material No.: **841 601 266 0**

Date of first issue: 2011-11-01

Doc.Code: 002 Language: EN Sheet: 1/1

ECN-No.: - Revision: Techn. Resp.: 4990 Replacement for: