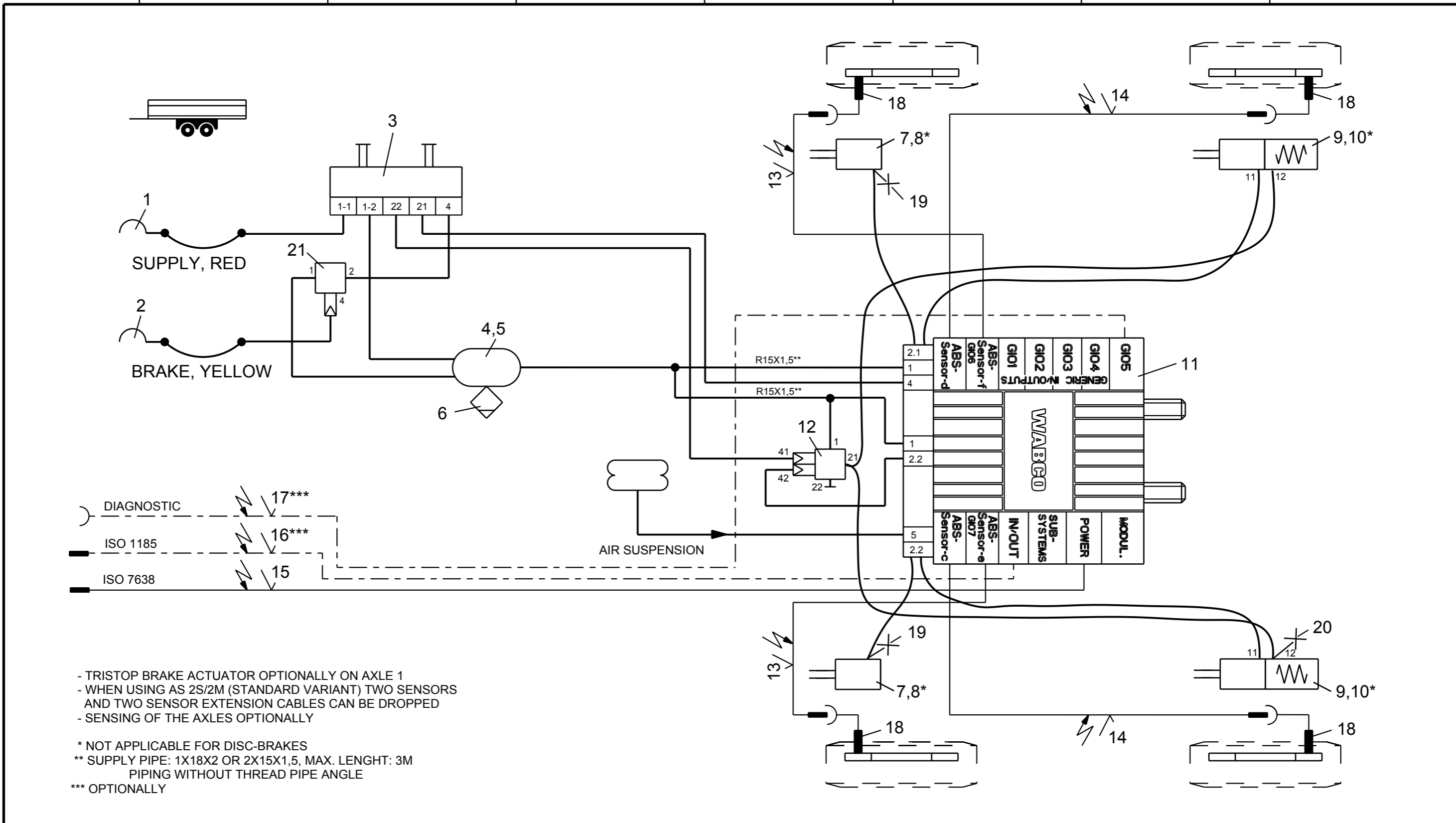


Non e permesso consegnare a terzi o riprodurre questo documento, ne utilizzarne il contenuto o renderlo comunque noto a terzi senza autorizzazione esplicita. Ogni infrazione costituirà un evidente abuso e comporterà il risarcimento dei danni subiti. Effetta riserva di tutti i diritti derivanti da brevetti o modelli.

Toute communication ou reproduction de ce document, toute exploitation ou communication de son contenu sont interdites, sauf autorisation expresse. Tout manquement a cette regle constitue un abus evident et expose son auteur au versement de dommages et interets. Tous droits de propriete industrielle reserves, notamment en matiere de brevets et de modeles.

Further copying of this document and giving it to others and the use or communication of the contents thereof, are forbidden without express authority. Contravention of this restriction will constitute an evident abuse and result in a liability to the payment of damages. All rights are reserved in the event of the grant of patent or registration of a utility model or design. This document is the subject of copyright.



- TRISTOP BRAKE ACTUATOR OPTIONALLY ON AXLE 1
- WHEN USING AS 2S/2M (STANDARD VARIANT) TWO SENSORS AND TWO SENSOR EXTENSION CABLES CAN BE DROPPED
- SENSING OF THE AXLES OPTIONALLY
- * NOT APPLICABLE FOR DISC-BRAKES
- ** SUPPLY PIPE: 1X18X2 OR 2X15X1,5, MAX. LENGTH: 3M PIPING WITHOUT THREAD PIPE ANGLE
- *** OPTIONALLY

12	1	OVERLOAD-PROTECTION-RV	973 011 201 0	24			
11	1	TRAILER-MODULATOR	480 102 ... 0	23			
10	2	KIT	423 903 532 2	22			
9	2	TRISTOP BRAKE ACTUATOR	925 0	21	1	RELAY VALVE	973 011 0.. 0
8	2	KIT	423 2	20	1	TEST CONNECTION	463 703 036 0
7	2	BRAKE CHAMBER	423 0	19	2	TEST CONNECTION	463 703 120 0
6	1	DRAIN VALVE	934 300 001 0	18	4	ABS-SENSOR	441 0
5	2	HOSE CLAMP	451 999 ... 2	17	1	DIAGNOSTIC CABLE	449 611 ... 0
4	1	AIR RESERVOIR	950 0	16	1	24N-CABLE	449 349 ... 0
3	1	PARK-RELEASE-EMERGENCY VALVE (PREV)	971 002 9.. 0	15	1	SUPPLY (POWER) CABLE	449 273 ... 0
2	1	COUPLING HEAD W.INT. LINE FILTER	952 201 ... 0	14	2	EXTENSION CABLE FOR SENSOR	449 723 ... 0
1	1	COUPLING HEAD W.INT. LINE FILTER	952 201 ... 0	13	2	EXTENSION CABLE FOR SENSOR	449 723 ... 0
Pos.	Pcs.	Denomination	Product Identification No.	Pos.	Pcs.	Denomination	Product Identification No.

Copyright WABCO	
Date	Signature
2011-08-29	BURMESTER
Checked	
2011-08-29	CHRONIS
Expert	
BURMESTER	
Mass	Scale
KG	
Size	CAD System
A 3	Pro/E

WABCO

TRAILER - EBS E

FOR 2-AXLES-CENTRAL-AXLE TRAILER
2S/2M OR 4S/2M OPTIONALLY RSS

Date of first issue: 2011-08-29			
Doc.Code	Language		
002	EN		
Sheet			
1/1			
ECN-No.	Revision	Techn. Resp.	Replacement for
-	-	4990	