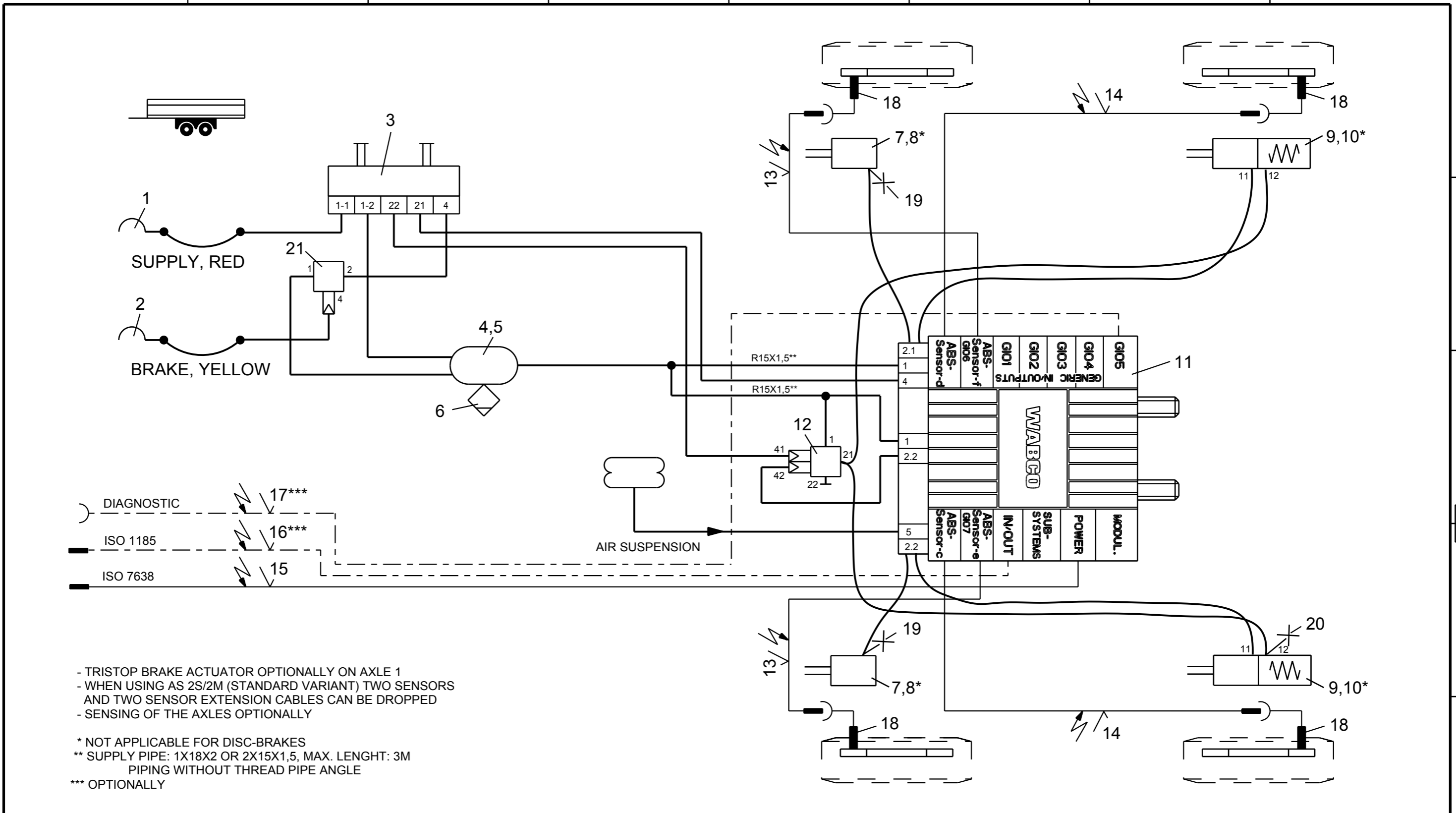


Non e permesso consegnare a terzi o riprodurre questo documento, ne utilizzarne il contenuto o renderlo comunque noto a terzi senza autorizzazione esplicita. Ogni infrazione costituirà un evidente abuso e comporterà il risarcimento dei danni subiti. E' fatta riserva di tutti i diritti derivanti da brevetti o modelli.

Toute communication ou reproduction de ce document, toute exploitation ou communication de son contenu sont interdites, sauf autorisation expresse. Tout manquement a cette regle constitue un abus evident et expose son auteur au versement de dommages et interets. Tous droits de propriete industrielle reserves, notamment en matiere de brevets et de modeles.

Weitergabe sowie Vervielfältigung dieses Unterlage, Verwertung und Mitteilung ihres Inhalts nicht gestattet, soweit nicht ausdrücklich zugestanden. Zuwiderhandlungen stellen einen offensichtlichen Missbrauch dar und verpflichten zu Schadenersatz. Alle Rechte rüden Fall der Patentierung oder Gebrauchsmuster-Eintragung vorbehalten.



- TRISTOP BRAKE ACTUATOR OPTIONALLY ON AXLE 1
 - WHEN USING AS 2S/2M (STANDARD VARIANT) TWO SENSORS AND TWO SENSOR EXTENSION CABLES CAN BE DROPPED
 - SENSING OF THE AXLES OPTIONALLY
- * NOT APPLICABLE FOR DISC-BRAKES
 ** SUPPLY PIPE: 1X18X2 OR 2X15X1,5, MAX. LENGTH: 3M PIPING WITHOUT THREAD PIPE ANGLE
 *** OPTIONALLY

Pos.	Pcs.	Denomination	Product Identification No.	Pos.	Pcs.	Denomination	Product Identification No.
12	1	OVERLOAD-PROTECTION-RV	973 011 201 0	24			
11	1	TRAILER-MODULATOR	480 102 ... 0	23			
10	2	KIT	423 903 532 2	22			
9	2	TRISTOP BRAKE ACTUATOR	925 0	21	1	RELAY VALVE	973 011 0.. 0
8	2	KIT	423 2	20	1	TEST CONNECTION	463 703 036 0
7	2	BRAKE CHAMBER	423 0	19	2	TEST CONNECTION	463 703 120 0
6	1	DRAIN VALVE	934 300 001 0	18	4	ABS-SENSOR	441 0
5	2	HOSE CLAMP	451 999 ... 2	17	1	DIAGNOSTIC CABLE	449 611 ... 0
4	1	AIR RESERVOIR	950 0	16	1	24N-CABLE	449 349 ... 0
3	1	PARK-RELEASE-EMERGENCY VALVE (PREV)	971 002 9.. 0	15	1	SUPPLY (POWER) CABLE	449 273 ... 0
2	1	COUPLING HEAD W.INT. LINE FILTER	952 201 ... 0	14	2	EXTENSION CABLE FOR SENSOR	449 723 ... 0
1	1	COUPLING HEAD W.INT. LINE FILTER	952 201 ... 0	13	2	EXTENSION CABLE FOR SENSOR	449 723 ... 0

Copyright WABCO®

WABCO

TRAILER - EBS E

FOR 2-AXLES-CENTRAL-AXLE TRAILER
2S/2M OR 4S/2M OPTIONALLY RSS

Date	Signature	Material No.	Date of first issue: 2011-08-29
2011-08-29	BURMESTER	841 601 289 0	Doc.Code
2011-08-29	CHRONIS		Language
Expert			Sheet
BURMESTER		002	EN
Mass	Scale	ECN-No.	Revision
KG		-	-
Size	CAD System	Techn. Resp.	Replacement for
A 3	Pro/E	4990	