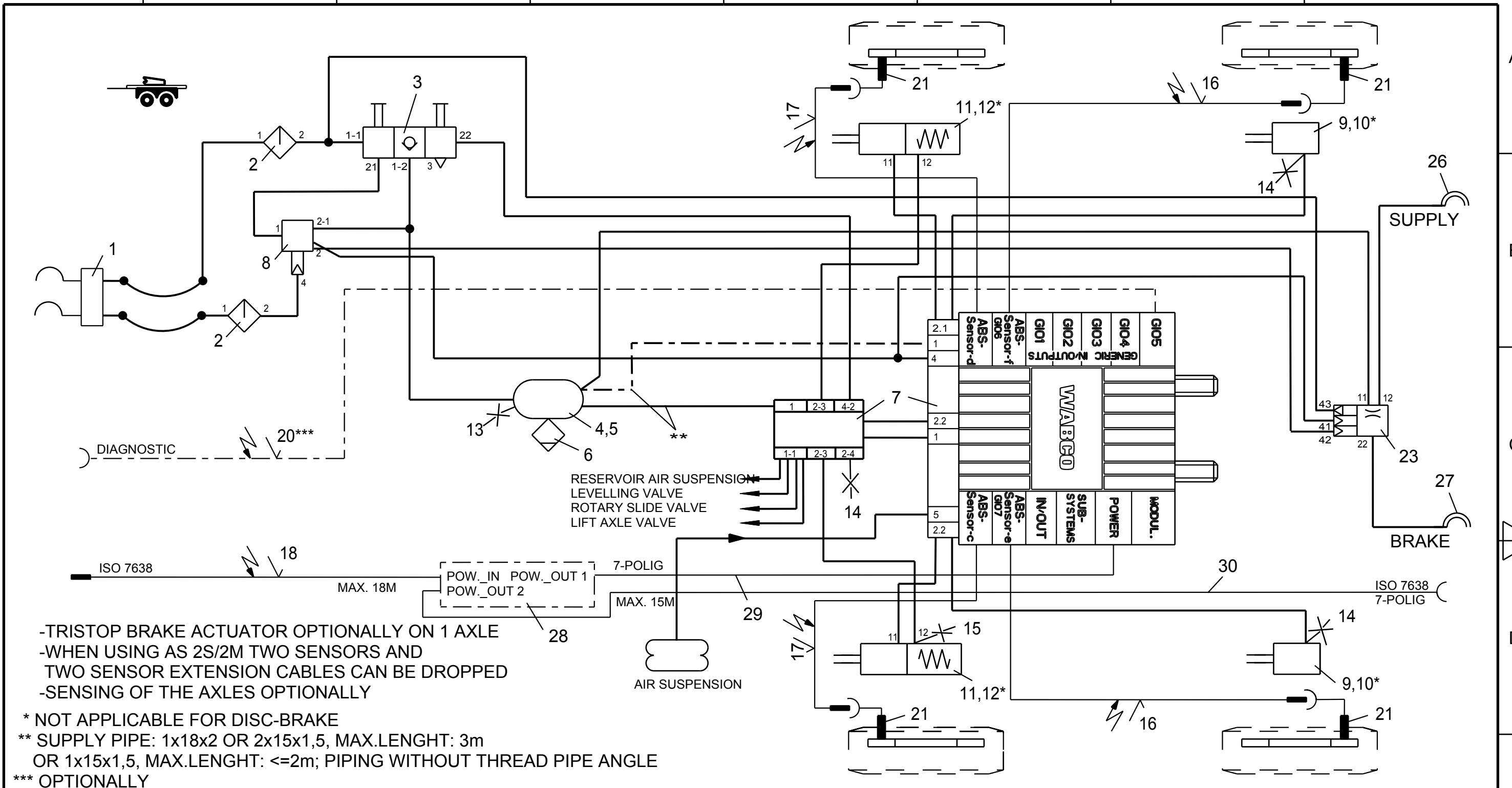


Non e permesso consegnare a terzi o riprodurre questo documento, ne utilizzarne il contenuto o renderlo comunque noto a terzi senza autorizzazione esplicita. Ogni infrazione costituirà un evidente abuso e comporterà il risarcimento dei danni subiti. E' fatta riserva di tutti i diritti derivanti da brevetti o modelli.

Copying of this document and giving it to others and the use or communication of the contents thereof, are forbidden without express authority. Contravention of this restriction will constitute an evident abuse and result in a liability to the payment of damages. All rights are reserved in the event of the grant of patent or registration of a utility model or design. This document is the subject of copyright.

Toute communication ou reproduction de ce document, toute exploitation ou communication de son contenu sont interdites, sauf autorisation expresse. Tout manquement a cette règle constitue un abus évident et expose son auteur au versement de dommages et intérêts. Tous droits de propriété industrielle réservés, notamment en matière de brevets et de modèles.

Weitergabe sowie Vervielfältigung dieser Unterlage, Verwertung und Mitteilung ihres Inhalts nicht gestattet, soweit nicht ausdrücklich zugestanden. Zuwiderhandlungen stellen einen offensichtlichen Missbrauch dar und verpflichten zu Schadenersatz. Alle Rechte rüden Fall der Patentierung oder Gebrauchsmuster-Eintragung vorbehalten.



-TRISTOP BRAKE ACTUATOR OPTIONALLY ON 1 AXLE
 -WHEN USING AS 2S/2M TWO SENSORS AND TWO SENSOR EXTENSION CABLES CAN BE DROPPED
 -SENSING OF THE AXLES OPTIONALLY

- * NOT APPLICABLE FOR DISC-BRAKE
- ** SUPPLY PIPE: 1x18x2 OR 2x15x1,5, MAX.LENGTH: 3m OR 1x15x1,5, MAX.LENGTH: <=2m; PIPING WITHOUT THREAD PIPE ANGLE
- *** OPTIONALLY

15	1	TEST CONNECTION	463 703 036 0	30	1	SUPPLY (POWER) CABLE	449 135 ... 0
14	3	TEST CONNECTION	463 703 120 0	29	1	SUPPLY (POWER) CABLE	449 347 ... 0
13	1	TEST CONNECTION	463 703 115 0	28	1	CAN-ROUTER	446 122 050 0/052 0
12	2	KIT	423 903 532 2	27	1	COUPLING HEAD AUTOM. BRAKE	952 200 222 0
11	2	TRISTOP BRAKE ACTUATOR	925 0	26	1	COUPLING HEAD AUTOM. SUPPLY	952 200 221 0
10	2	KIT	423 000 ... 0	25			
9	2	BRAKE CHAMBER	423 0	24			
8	1	TRAILER BRAKE VALVE	971 002 301 0	23	1	TRAILER CONTROL VALVE	973 0
7	1	TRAILER-MODULATOR W.EXTENSION MODUL	480 102 ... 0	22			
6	2	DRAIN VALVE	934 300 001 0	21	4	ABS-SENSOR	441 032 8.. 0
5	2	HOSE CLAMP	451 999 ... 2	20	1	DIAGNOSTIC CABLE	449 611 ... 0
4	1	AIR RESERVOIR	950 0	19			
3	1	DOUBLE RELEASE VALVE	963 001 05. 0	18	1	SUPPLY (POWER) CABLE	449 133 ... 0
2	1	LINE FILTER	432 500 02. 0	17	2	EXTENSION CABLE FOR SENSOR	449 723 ... 0
1	1	DUMATIC COUPLING HEAD	452 804 012 0	16	2	EXTENSION CABLE FOR SENSOR	449 723 ... 0
Pos.	Pcs.	Denomination	Product Identification No.	Pos.	Pcs.	Denomination	Product Identification No.

Copyright WABCO®		<h1>WABCO</h1> <h2>TRAILER - EBS E</h2> <p>WITH CAN-ROUTER 4S/2M OR 2S/2M -DOLLY-</p>				
Date	Signature					
2009-12-02	BURMESTER					
2009-12-02	CHRONIS					
Checked		Expert				
BURMESTER		BURMESTER				
Mass	Scale	Material No.		Date of first issue: 2009-12-02		
-	-	<h1>841 601 321 0</h1>		Doc.Code	Language	Sheet
KG	-			002	EN	1/1
Size	CAD System			Replacement for		
A 3	Pro/E	ECN-No.	Revision	Techn. Resp.		
		124147	A	4990		