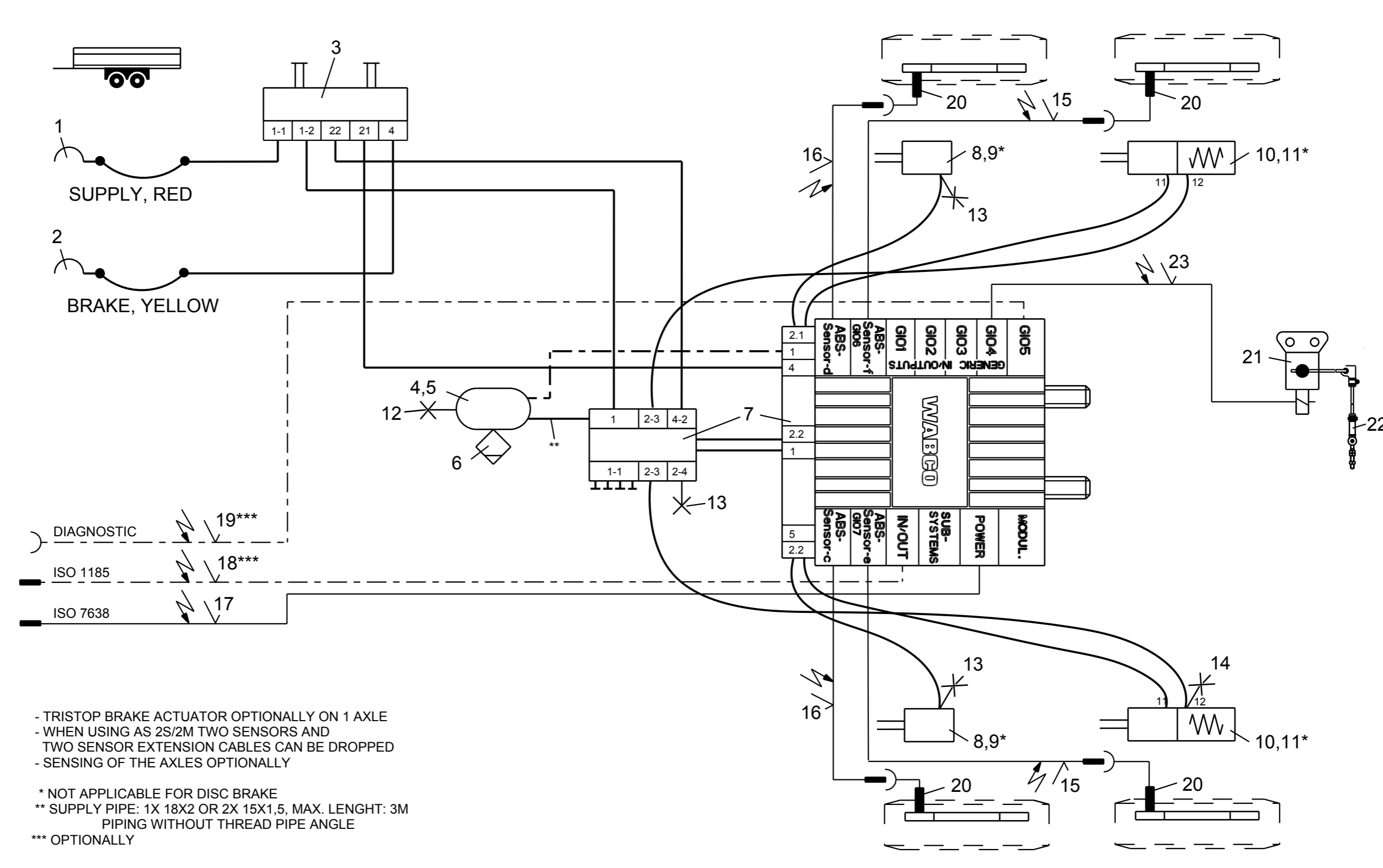


Non e permesso consegnare a terzi o riprodurre questo documento, ne utilizzare il contenuto o renderlo comunque noto a terzi senza autorizzazione esplicita. Ogni infrazione costituirà un evidente abuso e comporterà il risarcimento dei danni subiti. E' fatta riserva di tutti i diritti derivanti da brevetti o modelli.

Copying of this document and giving it to others and the use or communication of the contents thereof, are forbidden without express authority. Contravention of this restriction will constitute an evident abuse and result in a liability to the payment of damages. All rights are reserved in the event of the grant of patent or registration of a utility model or design. This document is the subject of copyright.

Toute communication ou reproduction de ce document, toute exploitation ou communication de son contenu sont interdites, sauf autorisation expresse. Tout manquement a cette règle constitue un abus évident et expose son auteur au versement de dommages et intérêts. Tous droits de propriété industrielle réservés, notamment en matière de brevets et de modèles.

Weitergabe sowie Vervielfältigung dieser Unterlage, Verwendung und Mitteilung ihres Inhalts nicht gestattet, soweit nicht ausdrücklich zugestanden. Zuwiderhandlungen stellen einen offensichtlichen Missbrauch dar und verpflichten zu Schadenersatz. Alle Rechte rüden Fall der Patentierung oder Gebrauchsmuster-Eintragung vorbehalten.



- TRISTOP BRAKE ACTUATOR OPTIONALLY ON 1 AXLE
  - WHEN USING AS 2S/2M TWO SENSORS AND TWO SENSOR EXTENSION CABLES CAN BE DROPPED
  - SENSING OF THE AXLES OPTIONALLY
- \* NOT APPLICABLE FOR DISC BRAKE  
 \*\* SUPPLY PIPE: 1X 18X2 OR 2X 15X1,5, MAX. LENGTH: 3M PIPING WITHOUT THREAD PIPE ANGLE  
 \*\*\* OPTIONALLY

Pos.	Pcs.	Denomination	Product Identification No.	Pos.	Pcs.	Denomination	Product Identification No.
12	1	TEST CONNECTION	463 703 115 0	23	1	GIO-CABLE DISTANCE SENSOR	449 811 ... 0
11	2	KIT	423 903 532 2	22	1	LINKAGE	433 401 003 0
10	2	TRISTOP BRAKE ACTUATOR	925 ... .. 0	21	1	DISTANCE SENSOR	441 050 100 0
9	2	KIT	423 000 ... 2	20	4	ABS-SENSOR	441 032 8.. 0
8	2	BRAKE CHAMBER	423 10. ... 0	19	1	DIAGNOSTIC CABLE	449 611 ... 0
7	1	TRAILER MODULATOR W.EXTENSION MUDUL	480 102 ... 0	18	1	24N-CABLE	449 349 ... 0
6	1	DRAIN VALVE	934 300 001 0	17	1	SUPPLY (POWER) CABLE	449 273 ... 0
5	2	HOSE CLAMP	451 999 ... 2	16	2	EXTENSION CABLE FOR SENSOR	449 723 ... 0
4	1	AIR RESERVOIR	950 ... .. 0	15	2	EXTENSION CABLE FOR SENSOR	449 723 ... 0
3	1	PARK-RELEASE-EMERGENCY VALVE (PREV)	971 002 9.. 0	14	1	TEST CONNECTION	463 703 036 0
2	1	COUPLING HEAD W.INT. LINE FILTER	952 201 ... 0	13	3	TEST CONNECTION	463 703 120 0
1	1	COUPLING HEAD W.INT. LINE FILTER	952 201 ... 0				

Copyright WABCO®

**WABCO**

TRAILER - EBS E

FOR 2-AXLES-CENTRAL-AXLE TRAILER 4S/2M OR 2S/2M -PEM-

Date	Signature	Material No.	Date of first issue: 2014-02-10
2014-02-10	BURMESTER	841 601 327 0	Doc.Code
2014-02-10	CHRONIS		Language
Expert			Sheet
BURMESTER		002	EN
Mass	Scale	ECN-No.	Revision
-	-		4990
KG		Techn. Resp.	
Size	CAD System	Replacement for	
A 3	Pro/E		