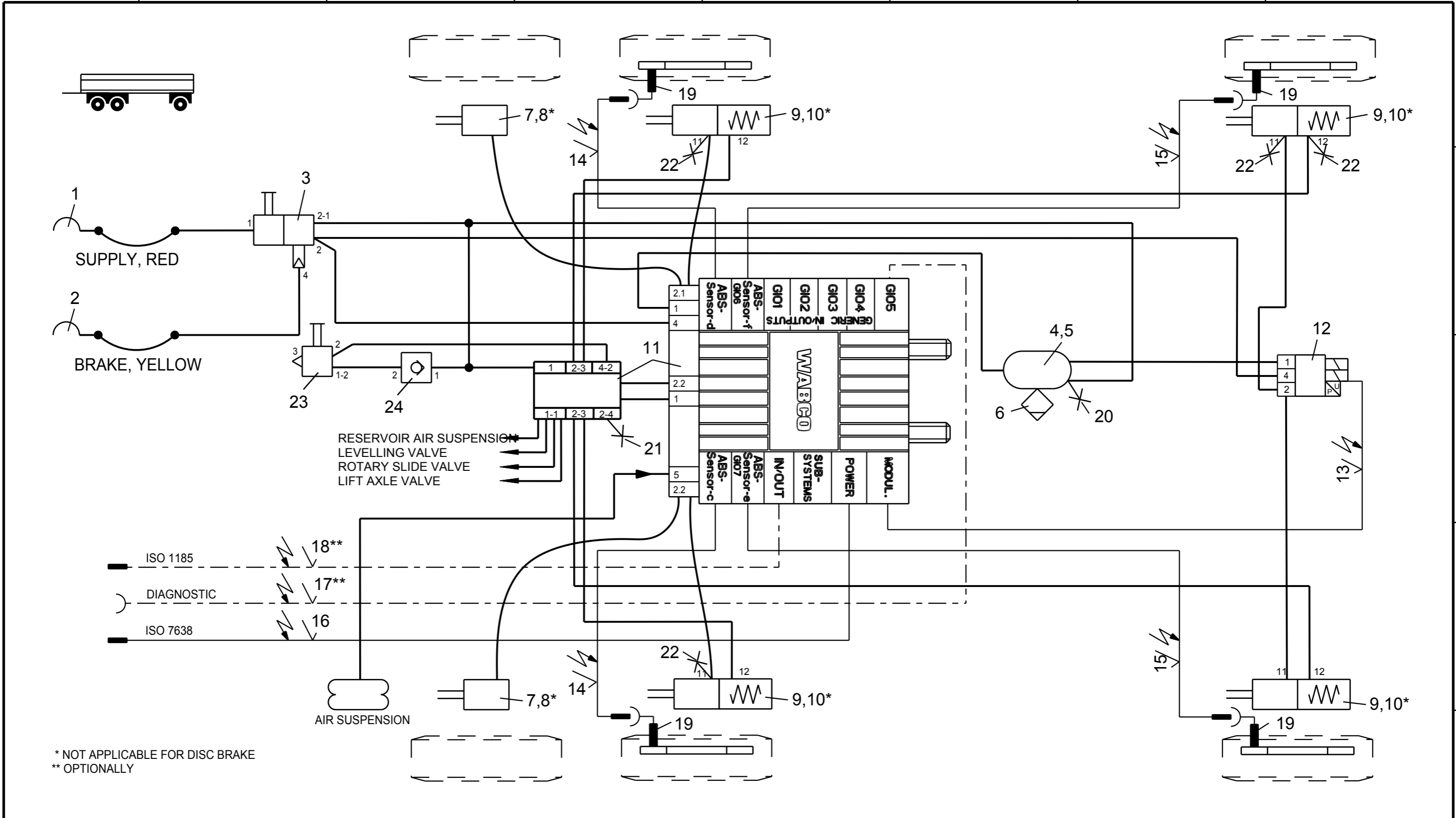


Non e permesso consegnare a terzi o riprodurre questo documento, ne utilizzarne il contenuto o renderlo comunque noto a terzi senza autorizzazione esplicita. Ogni infrazione costituirà un evidente abuso e comporterà il risarcimento dei danni subiti. E' fatta riserva di tutti i diritti derivanti da brevetti o modelli.

Copying of this document and giving it to others and the use or communication of the contents thereof, are forbidden without express authority. Contravention of this restriction will constitute an evident abuse and result in a liability to the payment of damages. All rights are reserved in the event of the grant of patent or registration of a utility model or design. This document is the subject of copyright.

Toute communication ou reproduction de ce document, toute exploitation ou communication de son contenu sont interdites, sauf autorisation expresse. Tout manquement a cette regle constitue un abus evident et expose son auteur au versement de dommages et interets. Tous droits de propriete industrielle reserves, notamment en matiere de brevets et de modeles.

Weitergabe sowie Vervielfaeltigung dieser Unterlage, Verwertung und Mitteilung ihres Inhalts nicht gestattet, soweit nicht ausdruecklich zugestanden. Zuwiderhandlungen stellen einen offensichtlichen Missbrauch dar und verpflichten zu Schadenersatz. Alle Rechte ruer den Fall der Patentierung oder Gebrauchsmuster-Eintragung vorbehalten.



* NOT APPLICABLE FOR DISC BRAKE
 ** OPTIONALLY

12	1	EBS-RELAY VALVE	480 207 0.. 0	24	1	CHECK VALVE	434 014 000 0
11	1	TRAILER-MODULATOR	480 102 ... 0	23	1	RELEASE VALVE PARKING BRAKE	963 006 003 0
10	4	KIT	423 903 532 2	22	4	TEST CONNECTION	463 703 120 0
9	4	TRISTOP BRAKE ACTUATOR	925 0	21	1	TEST CONNECTION	463 703 120 0
8	2	KIT	423 2	20	1	TEST CONNECTION	463 703 115 0
7	2	BRAKE CHAMBER	423 0	19	4	ABS-SENSOR	441 0
6	1	DRAIN VALVE	934 300 001 0	18	1	24N-CABLE	449 349 000 0
5	2	HOSE CLAMP	451 999 ... 2	17	1	DIAGNOSTIC CABLE	449 611 000 0
4	1	AIR RESERVOIR	950 0	16	1	SUPPLY (POWER) CABLE	449 273 000 0
3	1	PARK-RELEASE-EMERG.-VALVE (PREV)	971 002 9.. 0	15	2	EXTENSION CABLE FOR SENSOR	449 723 000 0
2	1	COUPLING HEAD W. INT. LINE FILTER	952 201 003 0	14	2	EXTENSION CABLE FOR SENSOR	449 723 000 0
1	1	COUPLING HEAD W. INT. LINE FILTER	952 201 004 0	13	1	CABLE TO EBS-RV	449 429 000 0
Pos.	Pcs.	Denomination	Product Identification No.	Pos.	Pcs.	Denomination	Product Identification No.

Copyright WABCO®

WABCO

TRAILER - EBS E
 FOR 3-AXLES-TRAILER
 4S/3M

Date	Signature				
2013-01-23	BURMESTER				
Checked					
2013-01-23	CHRONIS				
Expert					
BURMESTER					
Mass	Scale	Material No.	Date of first issue:2013-01-23		
KG		841 601 361 0	Doc.Code	Language	Sheet
Size	CAD System		002	EN	1/1
A 3	Pro/E	ECN-No.	Revision	Techn. Resp.	Replacement for
		-	-	4990	