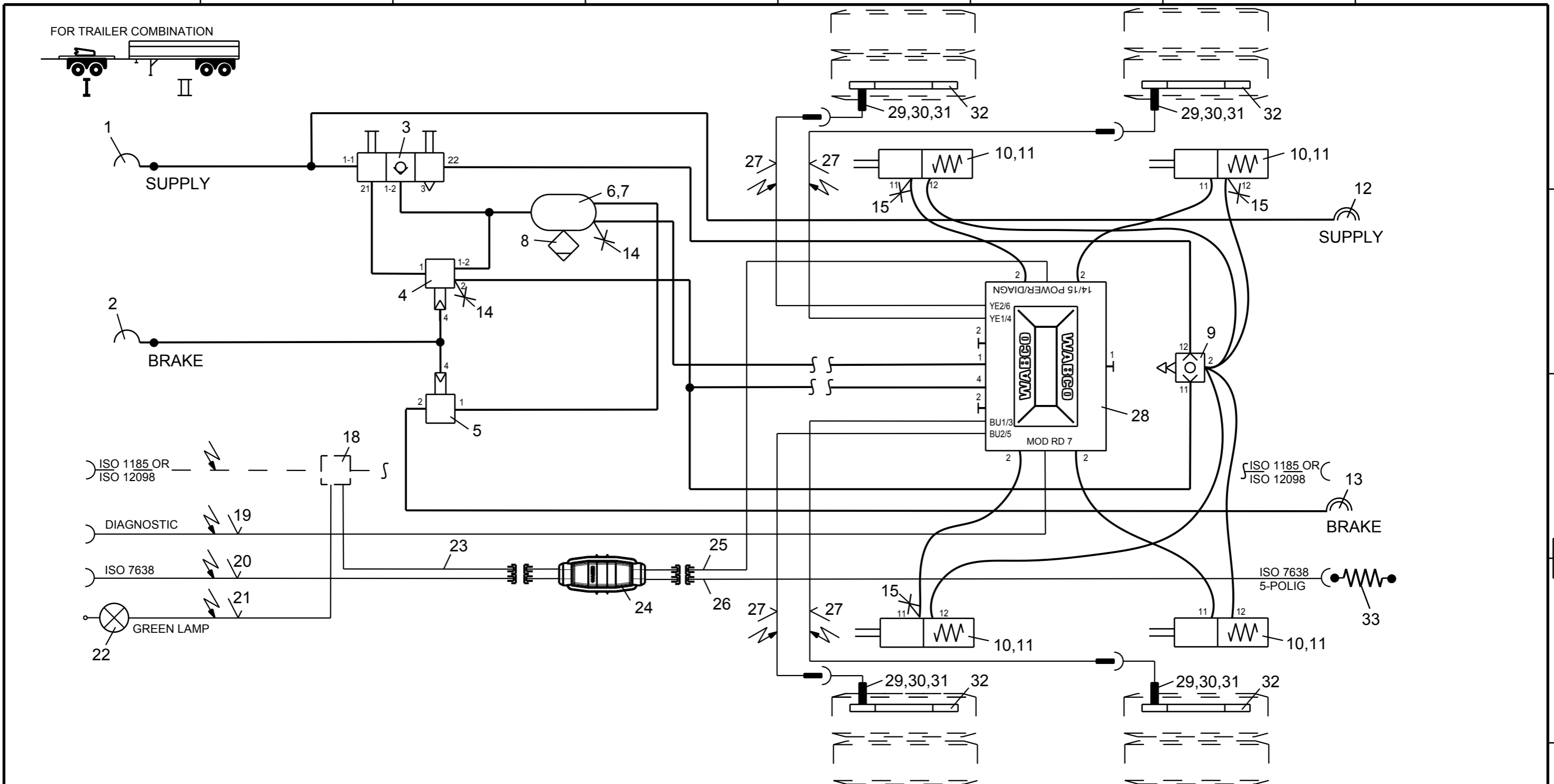


Non e permesso consegnare a terzi o riprodurre questo documento, ne utilizzarne il contenuto o renderlo comunque noto a terzi senza autorizzazione esplicita. Ogni infrazione costituirà un evidente abuso e comporterà il risarcimento dei danni subiti. E' fatta riserva di tutti i diritti derivanti da brevetti o modelli.

Copying of this document and giving it to others and the use or communication of the contents thereof, are forbidden without express authority. Contravention of this restriction will constitute an evident abuse and result in a liability to the payment of damages. All rights are reserved in the event of the grant of patent or registration of a utility model or design. This document is the subject of copyright.

Toute communication ou reproduction de ce document, toute exploitation ou communication de son contenu sont interdites, sauf autorisation expresse. Tout manquement a cette règle constitue un abus évident et expose son auteur au versement de dommages et intérêts. Tous droits de propriété industrielle réservés, notamment en matière de brevets et de modèles.

Weitergabe sowie Vervielfältigung dieser Unterlage, Verwertung und Mitteilung ihres Inhalts nicht gestattet, soweit nicht ausdrücklich zugestanden. Zuwiderhandlungen stellen einen offensichtlichen Missbrauch dar und verpflichten zu Schadenersatz. Alle Rechte rüden Fall der Patentierung oder Gebrauchsmuster-Eintragung vorbehalten.



17				34			
16				33	1	COILED CABLE	446 008 240 0
15	3	TEST CONNECTION	463 703 036 0	32	4	TOOTHED WHEEL	895 905 568 4
14	2	TEST CONNECTION	463 703 115 0	31	4	GREASE	830 503 062 4
13	1	COUPLING HEAD AUTOM.BRAKE	952 200 222 0	30	4	SENSOR-BUSH	899 759 815 4
12	1	COUPLING HEAD AUTOM.SUPPLY	952 200 221 0	29	4	ABS-SENSOR	441 032 808 0
11	4	KIT	423 903 532 2	28	1	VCS2-TRAILER-MODULATOR	400 500 087 0
10	4	TRISTOP BRAKE ACTUATOR	925 3... 0	27	4	EXTENSION CABLE FOR SENSOR	1.8M 449 712 018 0
9	1	2-WAY-QUICK-RELEASE VALVE	973 500 051 0	26	1	CABLE WITH ABS-SOCKET	1.0M 449 132 010 0
8	1	DRAIN VALVE	934 300 001 0	25	1	POWER (SUPPLY) CABLE	0.5M 449 360 005 0
7	1	HOSE CLAMP	451 999 ... 2	24	1	MULTI-DISTRIBUTER	894 600 052 0
6	1	AIR RESERVOIR	950 ... 0	23	1	24N-CABLE W. DIN BAJONETT	10M 449 380 100 0
5	1	RELAY VALVE	973 011 000 0	22	1	GREEN LAMP	884 ... 2
4	1	TRAILER BRAKE VALVE	971 002 ... 0	21	1	CABLE-GREEN LAMP	10M 449 900 100 0
3	1	DOUBLE RELEASE VALVE	963 001 05. 0	20	1	POWER (SUPPLY) CABLE	3M 449 242 030 0
2	1	COUPLING HEAD W.INT.LINE FILTER	952 201 001 0	19	1	DIAGNOSTIC CABLE	OPTIONAL 3M 449 615 030 0
1	1	COUPLING HEAD W.INT.LINE FILTER	952 201 002 0	18	1	NOT WABCO	
Pos.	Pcs.	Denomination	Product Identification No.	Pos.	Pcs.	Denomination	Product Identification No.

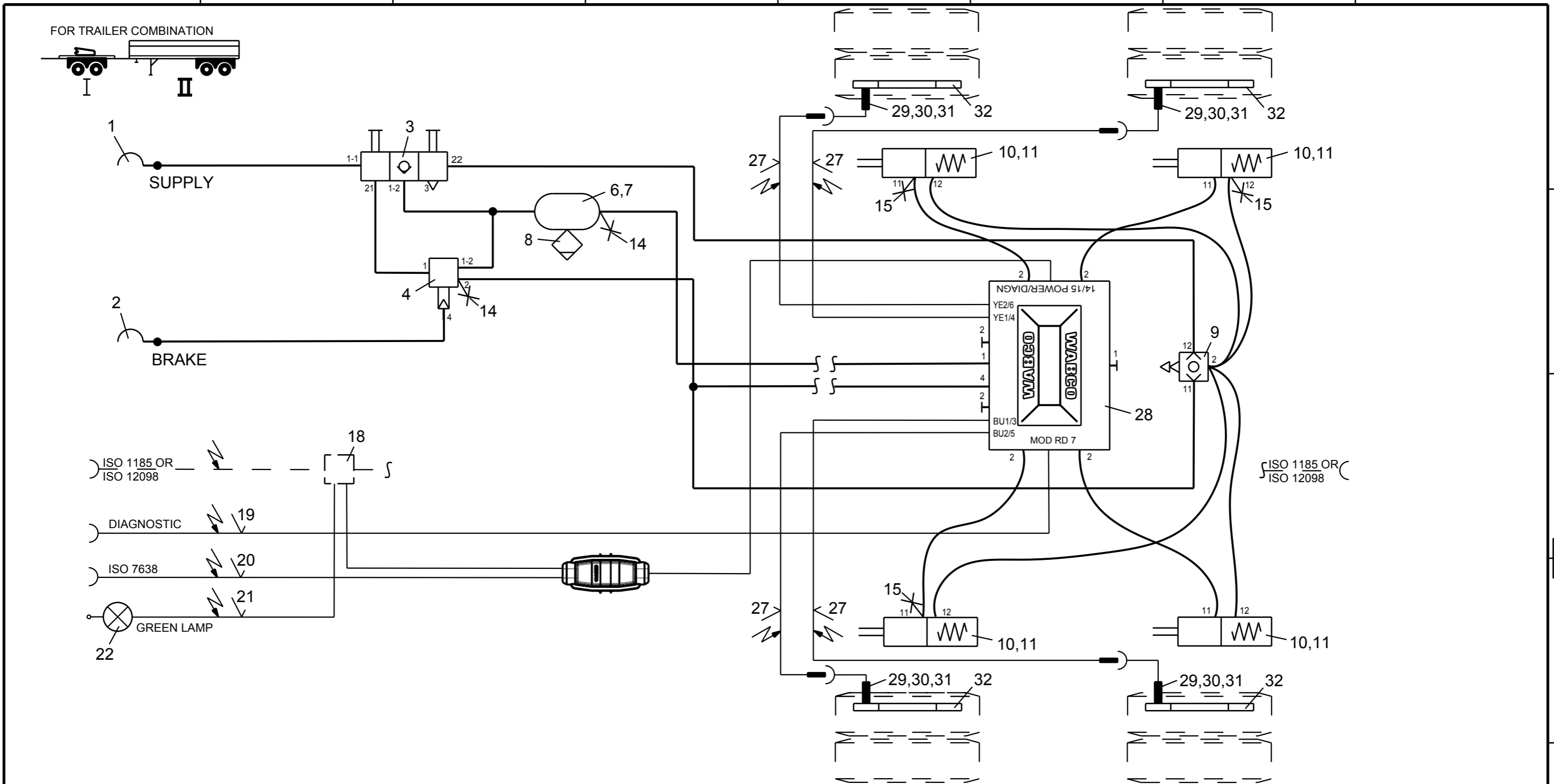
Copyright WABCO		<b>WABCO</b>	
Date	Signature		
Drawn		TWO LINE-AIR BRAKING SYSTEM	
2012-03-13	BURMESTER		
Checked		TRAILER 1	
2012-03-13	MEISE		
Expert		DOLLY-SEMI 4S/2M	
BURMESTER			
Mass	Scale	Material No.	Date of first issue:2012-03-13
KG		841 701 129 0	Doc.Code
Size	CAD System		002
A 3	Pro/E	ECN-No.	Revision
		-	-
		Techn. Resp.	4990
		Replacement for	

Non e permesso consegnare a terzi o riprodurre questo documento, ne utilizzarne il contenuto o renderlo comunque noto a terzi senza autorizzazione esplicita. Ogni infrazione costituirà un evidente abuso e comporterà il risarcimento dei danni subiti. E' fatta riserva di tutti i diritti derivanti da brevetti o modelli.

Copying of this document and giving it to others and the use or communication of the contents thereof, are forbidden without express authority. Contravention of this restriction will constitute an evident abuse and result in a liability to the payment of damages. All rights are reserved in the event of the grant of patent or registration of a utility model or design. This document is the subject of copyright.

Toute communication ou reproduction de ce document, toute exploitation ou communication de son contenu sont interdites, sauf autorisation expresse. Tout manquement a cette règle constitue un abus évident et expose son auteur au versement de dommages et intérêts. Tous droits de propriété industrielle réservés, notamment en matière de brevets et de modèles.

Weitergabe sowie Vervielfältigung dieser Unterlage, Verwertung und Mitteilung ihres Inhalts nicht gestattet, soweit nicht ausdrücklich zugestanden. Zuwiderhandlungen stellen einen offensichtlichen Missbrauch dar und verpflichten zu Schadenersatz. Alle Rechte rüden Fall der Patentierung oder Gebrauchsmuster-Eintragung vorbehalten.



17				34			
16				33			
15	3	TEST CONNECTION	463 703 036 0	32	4	TOOTHED WHEEL	895 905 568 4
14	2	TEST CONNECTION	463 703 115 0	31	4	GREASE	830 503 062 4
13				30	4	SENSOR-BUSH	899 759 815 4
12				29	4	ABS-SENSOR	441 032 808 0
11	4	KIT	423 903 532 2	28	1	VCS2-TRAILER-MODULATOR	400 500 087 0
10	4	TRISTOP BRAKE ACTUATOR	925 3... 0	27	4	EXTENSION CABLE FOR SENSOR	1.8M 449 712 018 0
9	1	2-WAY-QUICK-RELEASE VALVE	973 500 051 0	26			
8	1	DRAIN VALVE	934 300 001 0	25			
7	2	HOSE CLAMP	451 999 ... 2	24			
6	1	AIR RESERVOIR	950 ... 0	23			
5				22	1	GREEN LAMP	884 ... 2
4	1	TRAILER BRAKE VALVE	971 002 ... 0	21	1	CABLE-GREEN LAMP	10M 449 900 100 0
3	1	DOUBLE RELEASE VALVE	963 001 05. 0	20	1	POWER (SUPPLY) CABLE	12M 449 124 337 0
2	1	COUPLING HEAD W.INT.LINE FILTER	952 201 001 0	19	1	DIAGNOSTIC CABLE	OPTIONAL 3M 449 615 030 0
1	1	COUPLING HEAD W.INT.LINE FILTER	952 201 002 0	18	1	NOT WABCO	
Pos. Pcs.		Denomination	Product Identification No.	Pos. Pcs.		Denomination	Product Identification No.

Copyright WABCO®		<b>WABCO</b>	
Date	Signature		
2012-03-13	BURMESTER	TWO LINE-AIR BRAKING SYSTEM	
Checked		TRAILER 2 DOLLY-SEMI 4S/2M	
2012-03-13	MEISE		
Expert			
BURMESTER			
Mass	Scale	Material No.	Date of first issue:2012-03-13
KG		841 701 129 0	Doc.Code
Size	CAD System		Language
A 3	Pro/E	002	EN
		Revision	2/2
		Techn. Resp.	4990
		Replacement for	