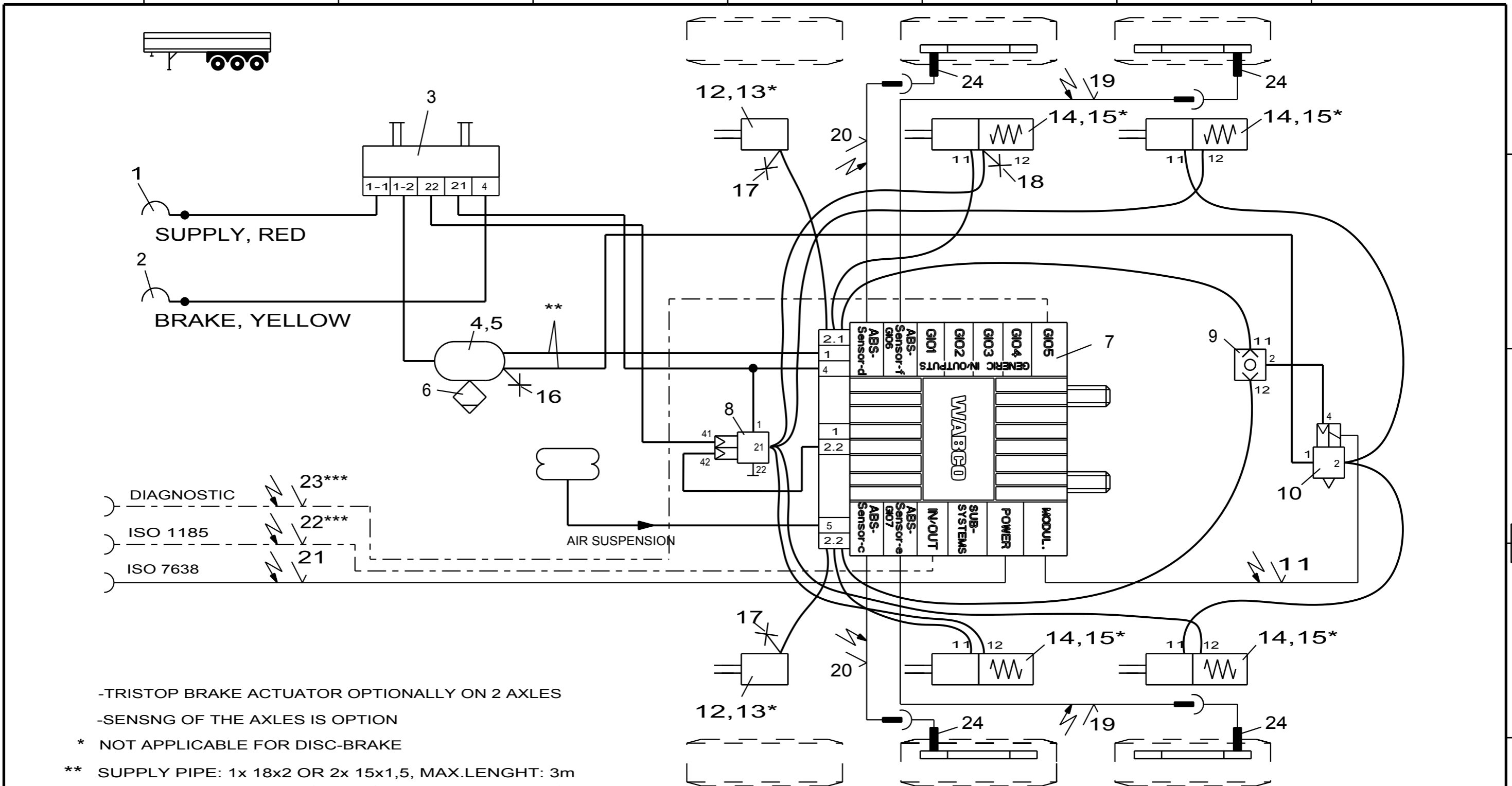


Non e permesso consegnare a terzi o riprodurre questo documento, ne utilizzarne il contenuto o renderlo comunque noto a terzi senza autorizzazione esplicita. Ogni infrazione costituirà un evidente abuso e comporterà il risarcimento dei danni subiti. E' fatta riserva di tutti i diritti derivanti da brevetti o modelli.

Copying of this document and giving it to others and the use or communication of the contents thereof, are forbidden without express authority. Contravention of this restriction will constitute an evident abuse and result in a liability to the payment of damages. All rights are reserved in the event of the grant of patent or registration of a utility model or design. This document is the subject of copyright.

Toute communication ou reproduction de ce document, toute exploitation ou communication de son contenu sont interdites, sauf autorisation expresse. Tout manquement a cette règle constitue un abus évident et expose son auteur au versement de dommages et intérêts. Tous droits de propriété industrielle réservés, notamment en matière de brevets et de modèles.

Weitergabe sowie Vervielfältigung dieser Unterlage, Verwertung und Mitteilung ihres Inhalts nicht gestattet, soweit nicht ausdrücklich zugestanden. Zuwiderhandlungen stellen einen offensichtlichen Missbrauch dar und verpflichten zu Schadenersatz. Alle Rechte rüden im Fall der Patentierung oder Gebrauchsmuster-Eintragung vorbehalten.



- TRISTOP BRAKE ACTUATOR OPTIONALLY ON 2 AXLES
- SENSNG OF THE AXLES IS OPTION
- * NOT APPLICABLE FOR DISC-BRAKE
- ** SUPPLY PIPE: 1x 18x2 OR 2x 15x1,5, MAX.LENGHT: 3m PIPING WITHOUT THREAD PIPE ANGLE
- *** OPTIONALLY (ONLY POSSIBLE FOR PREMIUM ECU)

INDEX	DATE	DESCRIPTION OF CHANGE
A	2014-08-13	LINE ON POS.8 ADDED

12	2	BRAKE CHAMBER	423 10. ... 0	24	4	ABS-SENSOR	441 032 8.. 0
11	1	CABLE TO ABS-RV	449 436 ... 0	23	1	DIAGNOSTIC CABLE	449 611 ... 0
10	1	ABS-RELAY VALVE	472 195 037 0	22	1	24N-CABLE	449 349 ... 0
9	1	TWO WAY-VALVE	434 208 0.. 0	21	1	SUPPLY (POWER) CABLE	449 173 ... 0
8	1	OVERLOAD-PROTECTION-RV	973 011 021 0	20	2	EXTENSION CABLE FOR SENSOR	449 723 ... 0
7	1	TRAILER-MODULATOR	480 102 ... 0	19	2	EXTENSION CABLE FOR SENSOR	449 723 ... 0
6	1	DRAIN VALVE	934 300 001 0	18	1	TEST CONNECTION	463 703 036 0
5	2	HOSE CLAMP	451 999 ... 0	17	2	TEST CONNECTION	463 703 120 0
4	1	AIR RESERVOIR	950 0	16	1	TEST CONNECTION	463 703 ... 0
3	1	PARK-RELEASE-EMERG.-VALVE (PREV)	971 002 9.. 0	15	4	KIT	423 903 532 2
2	1	COUPLING HEAD W.INT. LINE FILTER	952 201 ... 0	14	4	TRISTOP BRAKE ACTUATOR	925 0
1	1	COUPLING HEAD W.INT. LINE FILTER	952 201 ... 0	13	2	KIT	423 000 ... 2
Pos.	Pcs.	Denomination	Product Identification No.	Pos.	Pcs.	Denomination	Product Identification No.

Copyright WABCO®

Date: 2009-06-30 Signature: BURMESTER

Drawn: BURMESTER

Checked: 2009-06-30 CHRONIS

Expert: BURMESTER

Material No. 841 701 223 0

Date of first issue: 2009-06-30

Doc.Code: 002 Language: EN Sheet: 1/1

ECN-No.: - Revision: A Techn. Resp.: 4990 Replacement for: