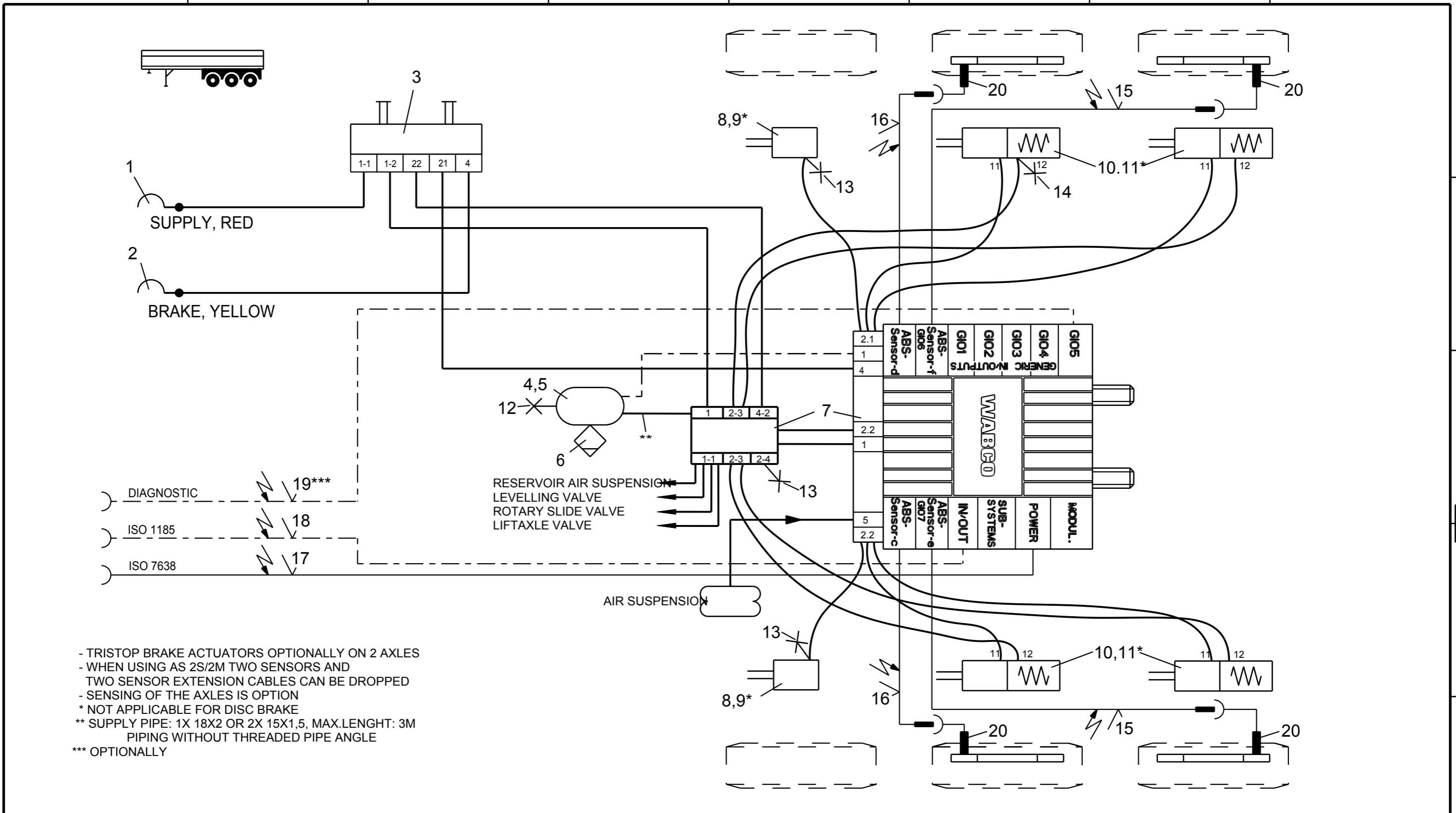


Non è permesso consegnare a terzi o riprodurre questo documento, né utilizzarne il contenuto o renderlo comunque noto a terzi senza autorizzazione esplicita. Ogni infrazione costituirà un evidente abuso e comporterà il risarcimento dei danni subiti. È fatta riserva di tutti i diritti derivanti da brevetti o modelli.

Copying of this document and giving it to others and the use or communication of the contents thereof, are forbidden without express authority. Contravention of this restriction will constitute an evident abuse and result in a liability to the payment of damages. All rights are reserved in the event of the grant of patent or registration of a utility model or design. This document is the subject of copyright.

Toute communication ou reproduction de ce document, toute exploitation ou communication de son contenu sont interdites, sauf autorisation expresse. Tout manquement à cette règle constitue un abus évident et expose son auteur au versement de dommages et intérêts. Tous droits de propriété industrielle réservés, notamment en matière de brevets et de modèles.

Weitergabe sowie Vervielfältigung dieser Unterlage, Verwertung und Mitteilung ihres Inhalts nicht gestattet, soweit nicht ausdrücklich zugestanden. Zuwiderhandlungen stellen einen offensichtlichen Missbrauch dar und verpflichten zu Schadenersatz. Alle Rechte rüden im Fall der Patentierung oder Gebrauchsmuster-Eintragung vorbehalten.



- TRISTOP BRAKE ACTUATORS OPTIONALLY ON 2 AXLES
- WHEN USING AS 2S/2M TWO SENSORS AND TWO SENSOR EXTENSION CABLES CAN BE DROPPED
- SENSING OF THE AXLES IS OPTION
- \* NOT APPLICABLE FOR DISC BRAKE
- \*\* SUPPLY PIPE: 1X 18X2 OR 2X 15X1,5, MAX.LENGTH: 3M PIPING WITHOUT THREADED PIPE ANGLE
- \*\*\* OPTIONALLY

Pos.	Pcs.	Denomination	Product Identification No.	Pos.	Pcs.	Denomination	Product Identification No.
12	1	TEST CONNECTION	463 703 115 0				
11	4	KIT	423 903 532 2				
10	4	TRISTOP BRAKE ACTUATOR	925 ... 0				
9	2	KIT	423 000 ... 2				
8	2	BRAKE CHAMBER	423 10. ... 0	20	4	ABS-SENSOR	441 032 8.. 0
7	1	TRAIL.-MODULATOR W.EXTENSION MODUL	480 102 ... 0	19	1	DIAGNOSTIC CABLE	449 611 000 0
6	1	DRAIN VALVE	934 300 001 0	18	1	24N-CABLE	449 349 000 0
5	2	HOSE CLAMP	451 999 ... 2	17	1	SUPPLY (POWER) CABLE	449 173 000 0
4	1	AIR RESERVOIR	950 ... 0	16	2	EXTENSION CABLE FOR SENSOR	449 723 000 0
3	1	PARK-RELEASE-EMERG.-VALVE (PREV)	971 002 9.. 0	15	2	EXTENSION CABLE FOR SENSOR	449 723 000 0
2	1	COUPLING HEAD W.INT. LINE FILTER	952 201 001 0	14	1	TEST CONNECTION	463 703 036 0
1	1	COUPLING HEAD W.INT. LINE FILTER	952 201 002 0	13	3	TEST CONNECTION	463 703 120 0

Copyright WABCO		<b>WABCO</b>	
Date	Signature	TRAILER - EBS E	
2012-06-06	BURMESTER	FOR 3-AXLES-SEMITRAILER	
Checked		4S/2M OR 2S/2M - WITH EXTENSION MODUL -	
2012-06-06	CHRONIS		
Expert			
BURMESTER			
Mass	Scale	Material No.	Date of first issue:2012-06-06
KG		841 701 239 0	Doc.Code
Size	CAD System		Language
A 3	Pro/E	ECN-No.	Revision
		Techn. Resp.	4990
		Replacement for	