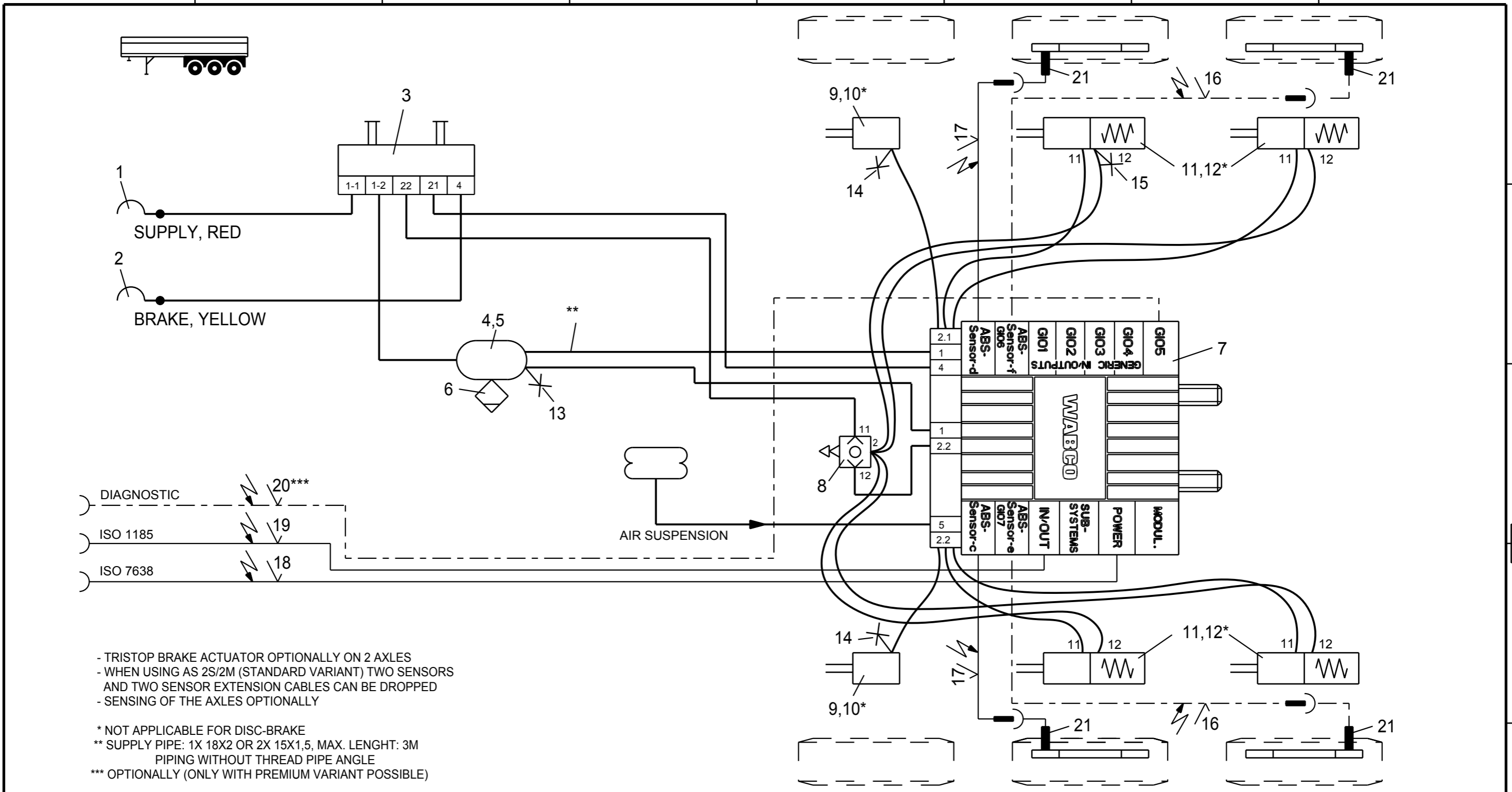


Non e permesso consegnare a terzi o riprodurre questo documento, ne utilizzare il contenuto o renderlo comunque noto a terzi senza autorizzazione esplicita. Ogni infrazione costituirà un evidente abuso e comporterà il risarcimento dei danni subiti. E' fatta riserva di tutti i diritti derivanti da brevetti o modelli.

Toute communication ou reproduction de ce document, toute exploitation ou communication de son contenu sont interdites, sauf autorisation expresse. Tout manquement a cette regle constitue un abus evident et expose son auteur au versement de dommages et interets. Tous droits de propriete industrielle reserves, notamment en matiere de brevets et de modeles.

Copying of this document and giving it to others and the use or communication of the contents thereof, are forbidden without express authority. Contravention of this restriction will constitute an evident abuse and result in a liability to the payment of damages. All rights are reserved in the event of the grant of patent or registration of a utility model or design. This document is the subject of copyright.

Weitergabe sowie Vervielfältigung dieses Unterlage, Verwertung und Mitteilung ihres Inhalts nicht gestattet, soweit nicht ausdrücklich zugestanden. Zuwiderhandlungen stellen einen offensichtlichen Missbrauch dar und verpflichten zu Schadenersatz. Alle Rechte rüden Fall der Patentierung oder Gebrauchsmuster-Eintragung vorbehalten.



- TRISTOP BRAKE ACTUATOR OPTIONALLY ON 2 AXLES
 - WHEN USING AS 2S/2M (STANDARD VARIANT) TWO SENSORS AND TWO SENSOR EXTENSION CABLES CAN BE DROPPED
 - SENSING OF THE AXLES OPTIONALLY
- * NOT APPLICABLE FOR DISC-BRAKE
 ** SUPPLY PIPE: 1X 18X2 OR 2X 15X1,5, MAX. LENGHT: 3M PIPING WITHOUT THREAD PIPE ANGLE
 *** OPTIONALLY (ONLY WITH PREMIUM VARIANT POSSIBLE)

Pos.	Pcs.	Denomination	Product Identification No.	Pos.	Pcs.	Denomination	Product Identification No.
13	1	TEST CONNECTION	463 703 115 0				
12	4	KIT	423 903 532 2				
11	4	TRISTOP BRAKE ACTUATOR	925 0				
10	2	KIT	423 000 ... 2				
9	2	BRAKE CHAMBER	423 10. ... 0				
8	1	2-WAY QUICK RELEASE VALVE	973 500 051 0	21	4	ABS-SENSOR	441 032 8.. 0
7	1	TRAILER-MODULATOR	480 102 ... 0	20	1	DIAGNOSTIC CABLE	449 611 ... 0
6	1	DRAIN VALVE	934 300 001 0	19	1	24N-CABLE	449 349 ... 0
5	2	HOSE CLAMP	451 999 ... 0	18	1	SUPPLY (POWER) CABLE	449 173 ... 0
4	1	AIR RESERVOIR	950 0	17	2	EXTENSION CABLE FOR SENSOR	449 723 ... 0
3	1	PARK-RELEASE-EMERGENCY VALVE (PREV)	971 002 9.. 0	16	2	EXTENSION CABLE FOR SENSOR	449 723 ... 0
2	1	COUPLING HEAD W.INT.LINE FILTER	952 201 ... 0	15	1	TEST CONNECTION	463 703 036 0
1	1	COUPLING HEAD W.INT.LINE FILTER	952 201 ... 0	14	2	TEST CONNECTION	463 703 120 0

Copyright WABCO®

Date: 2012-07-10
 Signature: BURMESTER
 Drawn: BURMESTER
 Checked: CHRONIS
 Expert: BURMESTER

WABCO
TRAILER - EBS E
FOR 3-AXLES-SEMITRAILER
4S/2M OR 2S/2M

Material No. 841 701 261 0
 Date of first issue: 2012-07-10
 Doc.Code: 002
 Language: EN
 Sheet: 1/1

ECN-No. 4990
 Revision
 Techn. Resp.
 Replacement for