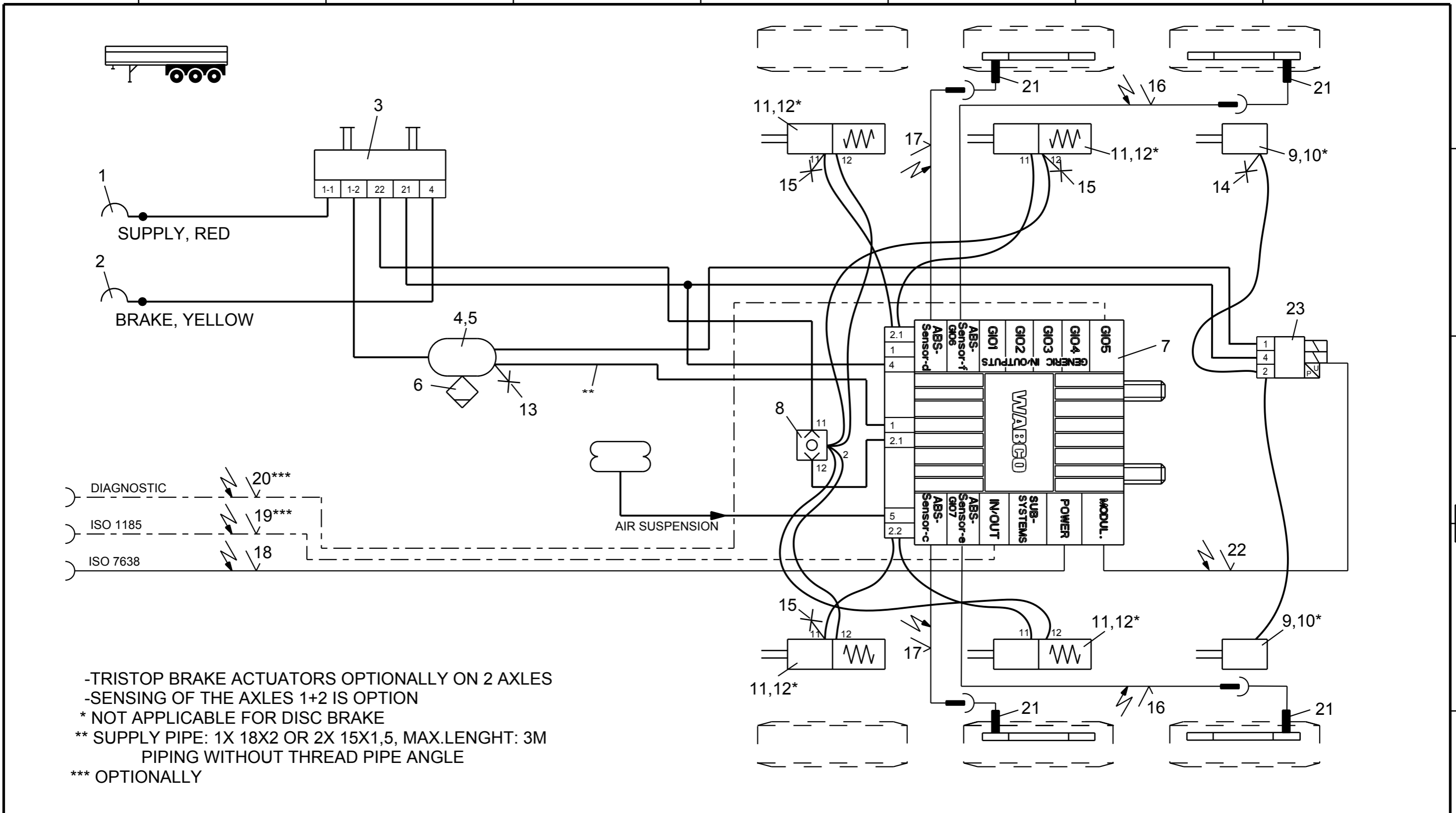


Non e permesso consegnare a terzi o riprodurre questo documento, ne utilizzare il contenuto o renderlo comunque noto a terzi senza autorizzazione esplicita. Ogni infrazione costituira un evidente abuso e comportera il risarcimento dei danni subiti. E' fatta riserva di tutti i diritti derivanti da brevetti o modelli.

Copying of this document and giving it to others and the use or communication of the contents thereof, are forbidden without express authority. Contravention of this restriction will constitute an evident abuse and result in a liability to the payment of damages. All rights are reserved in the event of the grant of patent or registration of a utility model or design. This document is the subject of copyright.

Toute communication ou reproduction de ce document, toute exploitation ou communication de son contenu sont interdites, sauf autorisation expresse. Tout manquement a cette regle constitue un abus evident et expose son auteur au versement de dommages et interets. Tous droits de propriete industrielle reserves, notamment en matiere de brevets et de modeles.

Weitergabe sowie Vervielfaeltigung dieser Unterlage, Verwertung und Mitteilung ihres Inhalts nicht gestattet, soweit nicht ausdruecklich zugestanden. Zuwiderhandlungen stellen einen offensichtlichen Missbrauch dar und verpflichten zu Schadenersatz. Alle Rechte ruehren den Fall der Patentierung oder Gebrauchsmuster-Eintragung vorbehalten.



- TRISTOP BRAKE ACTUATORS OPTIONALLY ON 2 AXLES
- SENSING OF THE AXLES 1+2 IS OPTION
- * NOT APPLICABLE FOR DISC BRAKE
- ** SUPPLY PIPE: 1X 18X2 OR 2X 15X1,5, MAX.LENGTH: 3M
PIPING WITHOUT THREAD PIPE ANGLE
- *** OPTIONALLY

12	4	KIT	*	423 903 532 2			
11	4	TRISTOP BRAKE ACTUATOR		925 0	23	1	EBS-RELAY VALVE
10	2	KIT	*	423 000 ... 2	22	1	CABLE TO EBS-RV
9	2	BRAKE CHAMBER		423 10. ... 0	21	4	ABS-SENSOR
8	1	TWO-WAY VALVE		434 208 0.. 0	20	1	DIAGNOSTIC CABLE
7	1	TRAILER-MODULATOR		480 102 ... 0	19	1	24N-CABLE
6	1	DRAIN VALVE		934 300 001 0	18	1	POWER (SUPPLY) CABLE
5	2	HOSE CLAMP		451 999 ... 2	17	2	EXTENSION CABLE FOR SENSOR
4	1	AIR RESERVOIR		950 0	16	2	EXTENSION CABLE FOR SENSOR
3	1	PARK-RELEASE-EMERG.-VALVE (PREV)		971 002 9.. 0	15	3	TEST CONNECTION
2	1	COUPLING HEAD W.INT.LINE FILTER		952 201 ... 0	14	1	TEST CONNECTION
1	1	COUPLING HEAD W.INT.LINE FILTER		952 201 ... 0	13	1	TEST CONNECTION
Pos.	Pcs.	Denomination		Product Identification No.	Pos.	Pcs.	Denomination
							Product Identification No.

Copyright WABCO®		WABCO	
Date	Signature	TRAILER - EBS E	
2012-11-12	BURMESTER	FOR 3-AXLES-SEMITRAILER	
Checked		4S/3M	
2012-11-12	CHRONIS		
Expert			
BURMESTER			
Mass	Scale	Material No.	Date of first issue:2012-11-12
-	-	841 701 262 0	Doc.Code
KG	-		002
Size	CAD System	Revision	Language
A 3	Pro/E	4990	EN
		Techn. Resp.	Sheet
			1/1
		Replacement for	