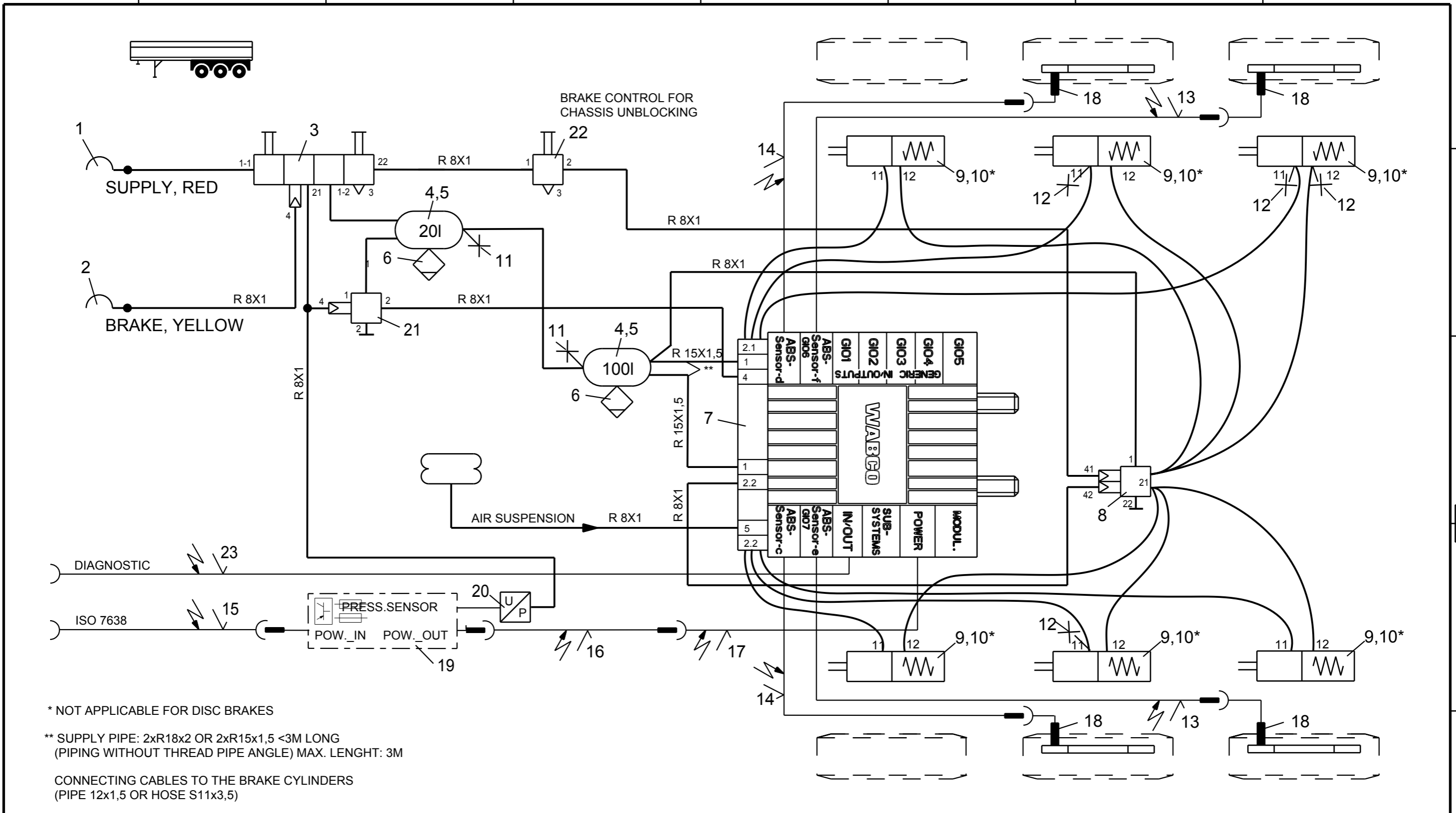


Non e permesso consegnare a terzi o riprodurre questo documento, ne utilizzare il contenuto o renderlo comunque noto a terzi senza autorizzazione esplicita. Ogni infrazione costituira un evidente abuso e comportera il risarcimento dei danni subiti. Effatta riserva di tutti i diritti derivanti da brevetti o modelli.

Copying of this document and giving it to others and the use or communication of the contents thereof, are forbidden without express authority. Contravention of this restriction will constitute an evident abuse and result in a liability to the payment of damages. All rights are reserved in the event of the grant of patent or registration of a utility model or design. This document is the subject of copyright.

Toute communication ou reproduction de ce document, toute exploitation ou communication de son contenu sont interdites, sauf autorisation expresse. Tout manquement a cette regle constitue un abus evident et expose son auteur au versement de dommages et interets. Tous droits de propriete industrielle reserves, notamment en matiere de brevets et de modeles.

Weitergabe sowie Vervielfaeligung dieser Unterlage, Verwertung und Mitteilung ihres Inhalts nicht gestattet, soweit nicht ausdruecklich zugestanden. Zuwiderhandlungen stellen einen offensichtlichlichen Missbrauch dar und verpflichten zu Schadenersatz. Alle Rechte ruerden Fall der Patentierung oder Gebrauchsmuster-Eintragung vorbehalten.



12	4	TEST CONNECTION	463 703 036 0	24			
11	2	TEST CONNECTION	463 703 ... 0	23	1	CABLE IN/OUT	449 349 ... 0
10	6	KIT	423 903 532 2	22	1	RELEASE VALVE	963 006 005 0
9	6	TRISTOP BRAKE ACTUATOR	925 0	21	1	RELAY VALVE	973 011 000 0
8	1	OVERLOAD PROTECTION-RV	973 011 201 0	20	1	PRESSURE SENSOR	446 044 102 0
7	1	EBS-MODULATOR	480 102 06. 0	19	1	EBS-CAN-REPEATER	446 122 053 0
6	2	DRAIN VALVE	934 300 001 0	18	4	ABS-SENSOR	441 032 ... 0
5	4	HOSE CLAMP	451 999 ... 2	17	1	BAJ.-CABLE W. ECU-PLUG SOCKET	449 347 003 0
4	2	AIR RESERVOIR	950 0	16	1	V-CABLE-EXTENSION DIN-BAJ.40M	894 600 032 0
3	1	PARK-RELEASE-EMERG.-VALVE (PREV)	971 002 9.. 0	15	1	V-CABLE WITH PLUG SOCKET	449 135 0.. 0
2	1	COUPLING HEAD W. INT.LINE FILTER	952 201 001 0	14	2	EXTENSION CABLE	449 723 ... 0
1	1	COUPLING HEAD W. INT.LINE FILTER	952 201 002 0	13	2	EXTENSION CABLE	449 723 ... 0
Pos.	Pcs.	Denomination	Product Identification No.	Pos.	Pcs.	Denomination	Product Identification No.

Copyright WABCO®

WABCO

Date: 2013-03-06
Signature: BURMESTER
Checked: CHRONIS
Expert: BURMESTER

TRAILER - EBS E
3-AXLES-SEMITRAILER EXTENDABLE,
4S/2M
CAN-REPEATER, RELAY VALVE AND PRESS.SENSOR
IN THE BRAKE HOSE

Mass	Scale	Material No.	Date of first issue: 2013-03-06		
-	-	841 701 263 0	Doc.Code	Language	Sheet
KG	-		002	EN	1/1
Size	CAD System	ECN-No.	Revision	Techn. Resp.	Replacement for
A 3	Pro/E			4990	HWR 00459