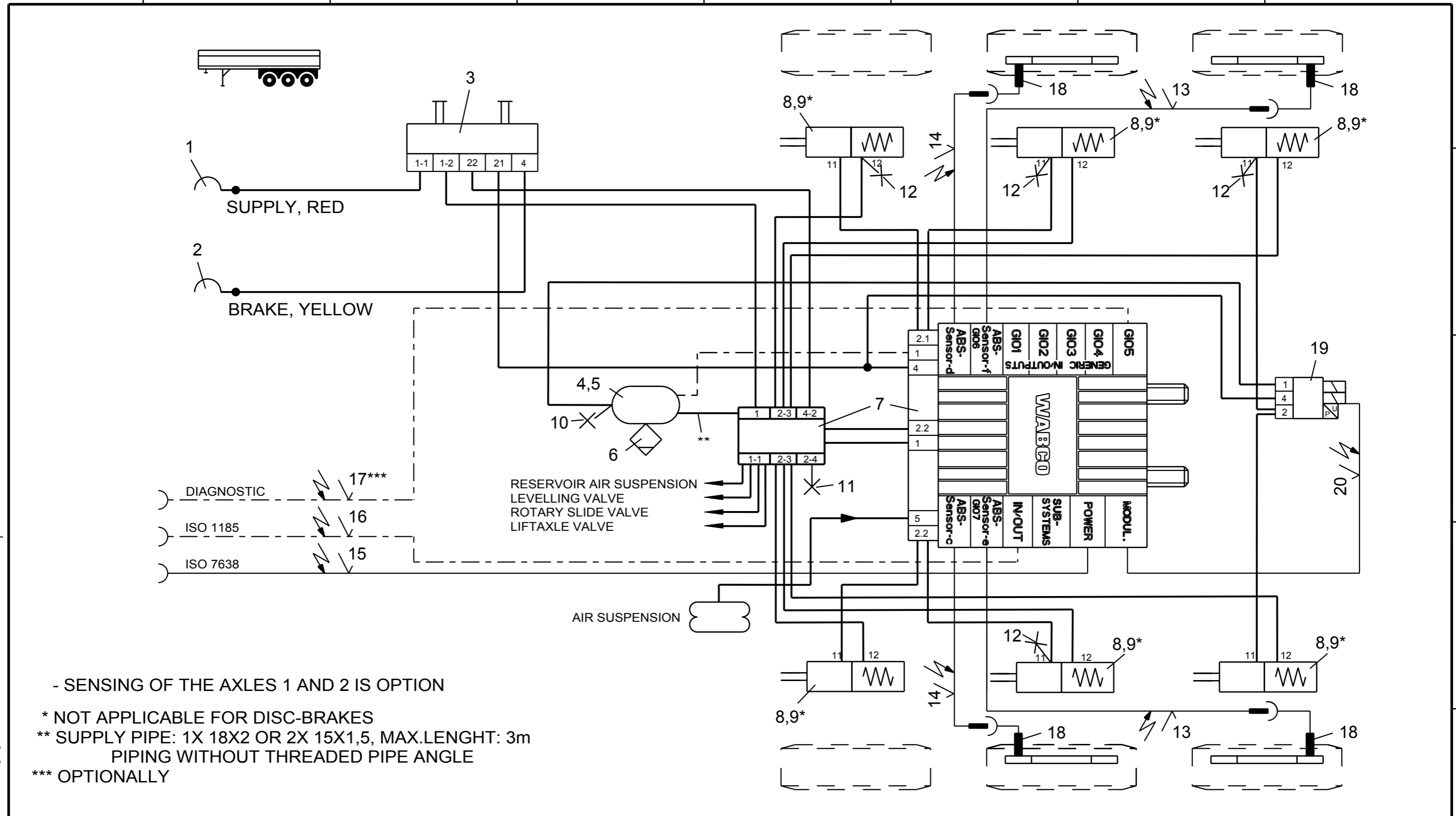


Non e permesso consegnare a terzi o riprodurre questo documento, ne utilizzarne il contenuto o renderlo comunque noto a terzi senza autorizzazione esplicita. Ogni infrazione costituirà un evidente abuso e comporterà il risarcimento dei danni subiti. E' fatta riserva di tutti i diritti derivanti da brevetti o modelli.

Copying of this document and giving it to others and the use or communication of the contents thereof, are forbidden without express authority. Contravention of this restriction will constitute an evident abuse and result in a liability to the payment of damages. All rights are reserved in the event of the grant of patent or registration of a utility model or design. This document is the subject of copyright.

Toute communication ou reproduction de ce document, toute exploitation ou communication de son contenu sont interdites, sauf autorisation expresse. Tout manquement a cette regle constitue un abus evident et expose son auteur au versement de dommages et interets. Tous droits de propriete industrielle reserves, notamment en matiere de brevets et de modeles.

Weitergabe sowie Vervielfaeltigung dieser Unterlage, Verwertung und Mitteilung ihres Inhalts nicht gestattet, soweit nicht ausdrucklich zugestanden. Zuwiderhandlungen stellen einen offensichtlichen Missbrauch dar und verpflichten zu Schadenersatz. Alle Rechte ruer den Fall der Patentierung oder Gebrauchsmuster-Eintragung vorbehalten.



- SENSING OF THE AXLES 1 AND 2 IS OPTION

- * NOT APPLICABLE FOR DISC-BRAKES
- ** SUPPLY PIPE: 1X 18X2 OR 2X 15X1,5, MAX.LENGTH: 3m
PIPING WITHOUT THREADED PIPE ANGLE
- *** OPTIONALLY

12	4	TEST CONNECTION	463 703 036 0				
11	1	TEST CONNECTION	463 703 120 0				
10	1	TEST CONNECTION	463 703 ... 0				
9	6	KIT	* 423 903 532 2				
8	6	TRISTOP BRAKE ACTUATOR	925 0	20	1	CABLE TO EBS-RV	449 429 ... 0
7	1	TRAILER-MODULATOR W.EXTENSION MODUL	480 102 ... 0	19	1	EBS-RELAY VALVE	480 207 0.. 0
6	1	DRAIN VALVE	934 300 001 0	18	4	ABS-SENSOR	441 032 8.. 0
5	2	HOSE CLAMP	451 999 ... 2	17	1	DIAGNOSTIC CABLE	*** 449 611 ... 0
4	1	AIR RESERVOIR	950 0	16	1	24N-CABLE	449 349 ... 0
3	1	PARK-RELEASE-EMERG. VALVE (PREV)	971 002 9.. 0	15	1	SUPPLY (POWER) CABLE	449 173 ... 0
2	1	COUPLING HEAD W.INT. LINE FILTER	952 201 001 0	14	2	EXTENSION CABLE FOR SENSOR	449 723 ... 0
1	1	COUPLING HEAD W.INT. LINE FILTER	952 201 002 0	13	2	EXTENSION CABLE FOR SENSOR	449 723 ... 0
Pos.	Pcs.	Denomination	Product Identification No.	Pos.	Pcs.	Denomination	Product Identification No.

Copyright WABCO®

Date: 2014-08-12 Signature: BURMESTER

Drawn: BURMESTER

Checked: CHRONIS

Expert: BURMESTER

TRAILER - EBS E
FOR 3-AXLES-SEMITRAILER
4S/3M - PEM -

Material No. 841 701 265 0

Date of first issue: 2014-08-12

Doc.Code: 002 Language: EN Sheet: 1/1

ECN-No.: - Revision: Techn. Resp.: 4990 Replacement for:

Mass: KG Scale: CAD System: Pro/E