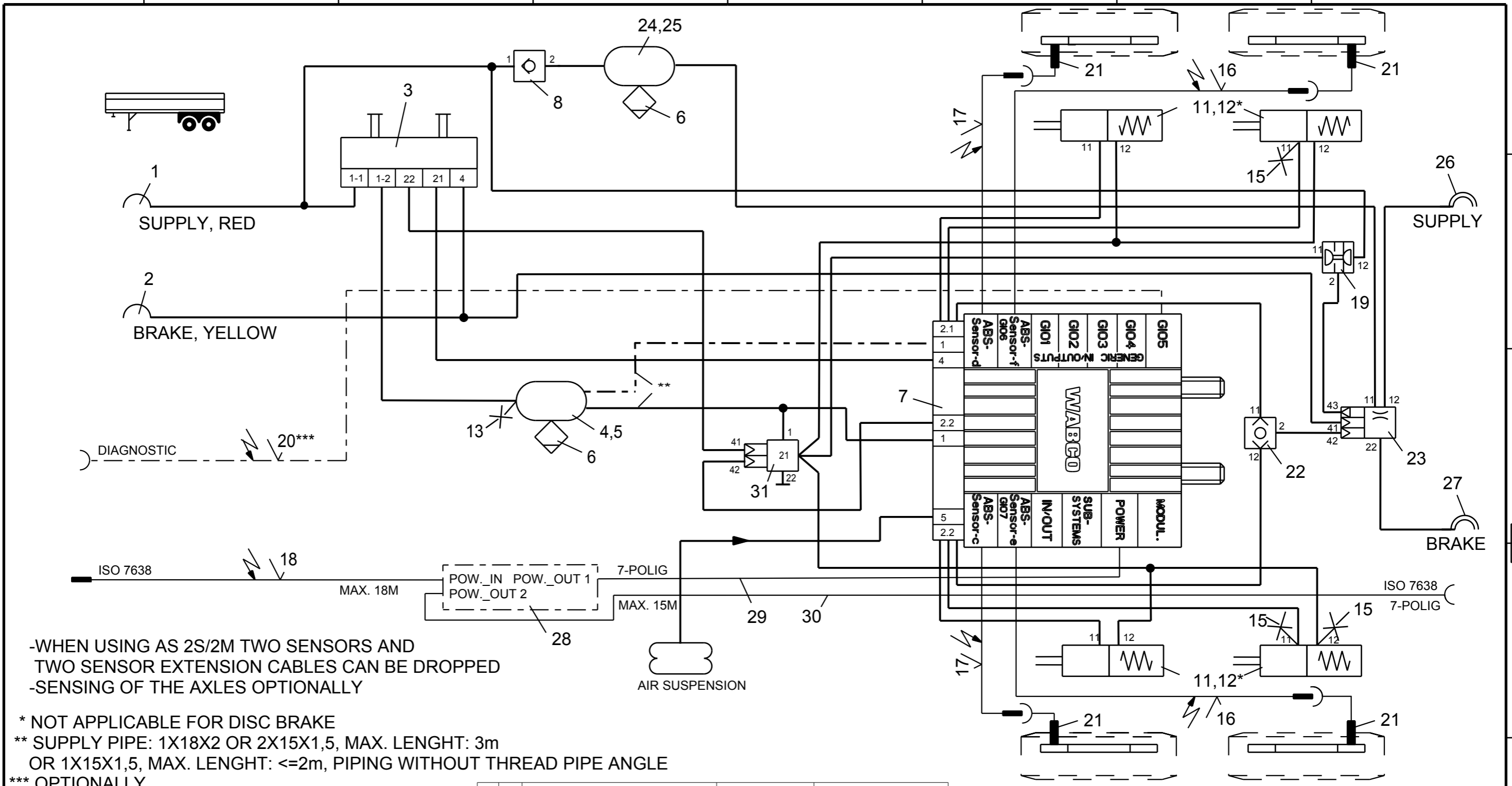


Non e permesso consegnare a terzi o riprodurre questo documento, ne utilizzarne il contenuto o renderlo comunque noto a terzi senza autorizzazione esplicita. Ogni infrazione costituirà un evidente abuso e comporterà il risarcimento dei danni subiti. Effetta riserva di tutti i diritti derivanti da brevetti o modelli.

Copying of this document and giving it to others and the use or communication of the contents thereof, are forbidden without express authority. Contravention of this restriction will constitute an evident abuse and result in a liability to the payment of damages. All rights are reserved in the event of the grant of patent or registration of a utility model or design. This document is the subject of copyright.

Toute communication ou reproduction de ce document, toute exploitation ou communication de son contenu sont interdites, sauf autorisation expresse. Tout manquement a cette règle constitue un abus évident et expose son auteur au versement de dommages et intérêts. Tous droits de propriété industrielle réservés, notamment en matière de brevets et de modèles.

Weitergabe sowie Vervielfältigung dieser Unterlage, Verwertung und Mitteilung ihres Inhalts nicht gestattet, soweit nicht ausdrücklich zugestanden. Zuwiderhandlungen stellen einen offensichtlichen Missbrauch dar und verpflichten zu Schadenersatz. Alle Rechte rüden Fall der Patentierung oder Gebrauchsmuster-Eintragung vorbehalten.



-WHEN USING AS 2S/2M TWO SENSORS AND TWO SENSOR EXTENSION CABLES CAN BE DROPPED  
 -SENSING OF THE AXLES OPTIONALLY

- \* NOT APPLICABLE FOR DISC BRAKE
- \*\* SUPPLY PIPE: 1X18X2 OR 2X15X1,5, MAX. LENGHT: 3m OR 1X15X1,5, MAX. LENGHT: <=2m, PIPING WITHOUT THREAD PIPE ANGLE
- \*\*\* OPTIONALLY

|      |      |                                     |                            |      |      |                             |                            |
|------|------|-------------------------------------|----------------------------|------|------|-----------------------------|----------------------------|
| 15   | 3    | TEST CONNECTION                     | 463 703 036 0              | 31   | 1    | OVERLOAD PROTECTION-RV      | 973 011 201 0              |
| 14   |      |                                     |                            | 30   | 1    | SUPPLY (POWER) CABLE        | 449 135 ... 0              |
| 13   | 1    | TEST CONNECTION                     | 463 703 115 0              | 29   | 1    | SUPPLY (POWER) CABLE        | 449 347 ... 0              |
| 12   | 4    | KIT                                 | * 423 903 532 2            | 28   | 1    | CAN-ROUTER                  | 446 122 050 0              |
| 11   | 4    | TRISTOP BRAKE ACTUATOR              | 925 ... .. 0               | 27   | 1    | COUPLING HEAD AUTOM. BRAKE  | 952 200 222 0              |
| 10   |      |                                     |                            | 26   | 1    | COUPLING HEAD AUTOM. SUPPLY | 952 200 221 0              |
| 9    |      |                                     |                            | 25   | 2    | HOSE CLAMP                  | 451 999 ... 2              |
| 8    | 1    | CHECK VALVE                         | 434 014 000 0              | 24   | 1    | AIR RESERVOIR               | 950 ... .. 0               |
| 7    | 1    | TRAILER-MODULATOR W.EXTENSION MODUL | 480 102 ... 0              | 23   | 1    | TRAILER CONTROL VALVE       | 973 ... .. 0               |
| 6    | 2    | DRAIN VALVE                         | 934 300 001 0              | 22   | 2    | SELECT HIGH VALVE           | 434 208 ... 0              |
| 5    | 2    | HOSE CLAMP                          | 451 999 ... 2              | 21   | 4    | ABS-SENSOR                  | 441 032 8.. 0              |
| 4    | 1    | AIR RESERVOIR                       | 950 ... .. 0               | 20   | 1    | DIAGNOSTIC CABLE            | *** 449 611 ... 0          |
| 3    | 1    | PARK-RELEASE-EMERG.-VALVE (PREV)    | 971 002 9.. 0              | 19   | 1    | DOUBLE CUT-OFF VALVE        | 434 500 003 0              |
| 2    | 1    | COUPLING HEAD W. INT.LINE FILTER    | 952 201 ... 0              | 18   | 1    | SUPPLY (POWER) CABLE        | 449 133 ... 0              |
| 1    | 1    | COUPLING HEAD W. INT.LINE FILTER    | 952 201 ... 0              | 17   | 2    | EXTENSION CABLE FOR SENSOR  | 449 723 ... 0              |
| Pos. | Pcs. | Denomination                        | Product Identification No. | Pos. | Pcs. | Denomination                | Product Identification No. |

| INDEX | DATE       | DESCRIPTION OF CHANGE                    |
|-------|------------|--|
| A     | 2014-04-02 | 973 011 021 0 CHANGED INTO 973 011 201 0 |

Copyright WABCO®

Date: 2012-06-19 Signature: BURMESTER

Drawn: 2012-06-19 BURMESTER

Checked: 2012-06-19 CHRONIS

Expert: BURMESTER

Material No. 841 701 270 0

Date of first issue: 2012-06-19

Doc.Code: 002 Language: EN Sheet: 1/1

ECN-No. A Revision 4990 Techn. Resp. Replacement for