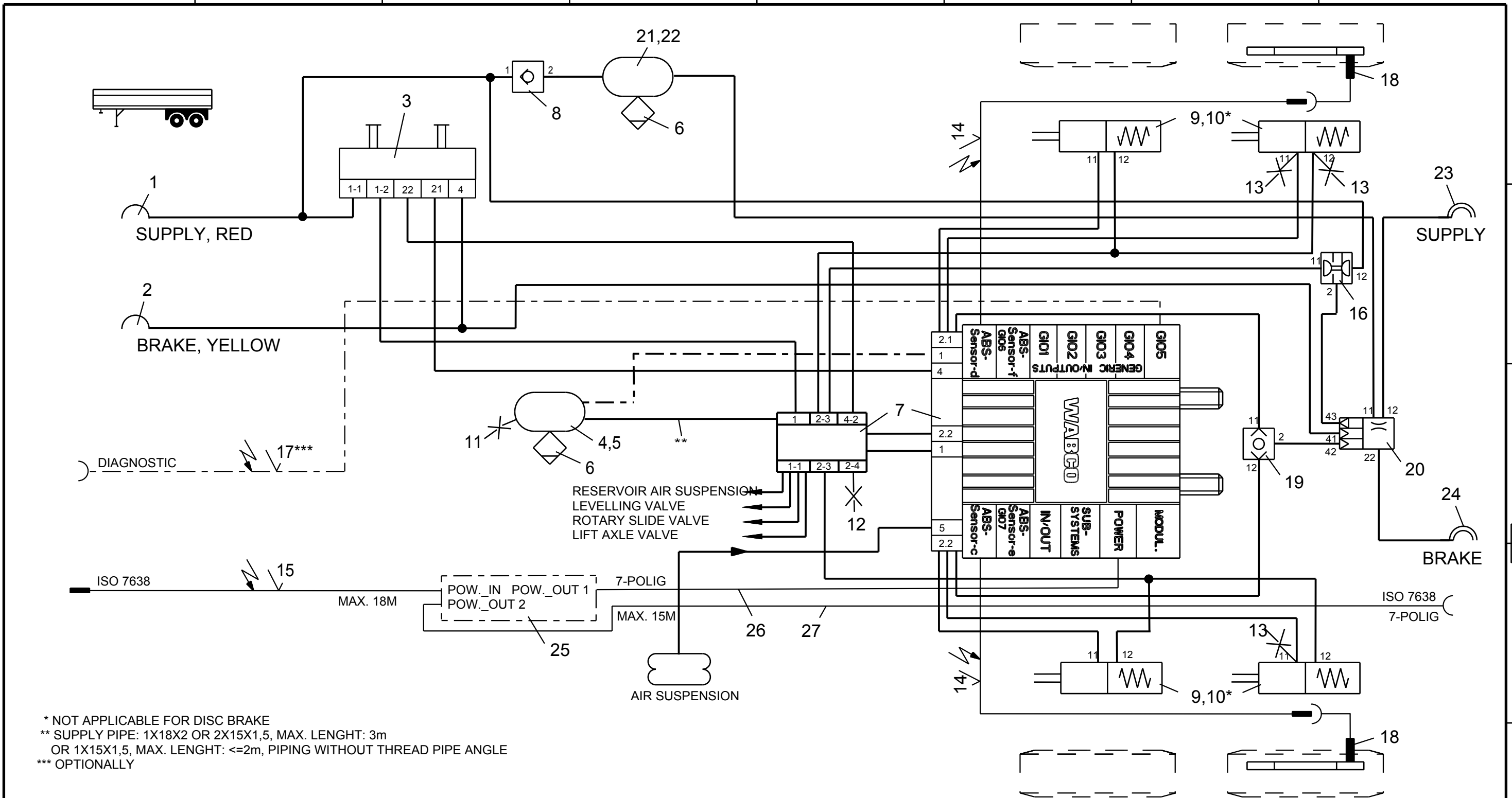


Non e permesso consegnare a terzi o riprodurre questo documento, ne utilizzare il contenuto o renderlo comunque noto a terzi senza autorizzazione esplicita. Ogni infrazione costituirà un evidente abuso e comporterà il risarcimento dei danni subiti. Effetta riserva di tutti i diritti derivanti da brevetti o modelli.

Copying of this document and giving it to others and the use or communication of the contents thereof, are forbidden without express authority. Contravention of this restriction will constitute an evident abuse and result in a liability to the payment of damages. All rights are reserved in the event of the grant of patent or registration of a utility model or design. This document is the subject of copyright.

Toute communication ou reproduction de ce document, toute exploitation ou communication de son contenu sont interdites, sauf autorisation expresse. Tout manquement a cette regle constitue un abus evident et expose son auteur au versement de dommages et interets. Tous droits de propriete industrielle reserves, notamment en matiere de brevets et de modeles.

Weitergabe sowie Vervielfaeltigung dieser Unterlage, Verwertung und Mitteilung ihres Inhalts nicht gestattet, soweit nicht ausdruecklich zugestanden. Zuwiderhandlungen stellen einen offensichtlichlichen Missbrauch dar und verpflichten zu Schadenersatz. Alle Rechte ruer den Fall der Patentierung oder Gebrauchsmuster-Eintragung vorbehalten.



* NOT APPLICABLE FOR DISC BRAKE
 ** SUPPLY PIPE: 1X18X2 OR 2X15X1,5, MAX. LENGTH: 3m
 OR 1X15X1,5, MAX. LENGTH: <=2m, PIPING WITHOUT THREAD PIPE ANGLE
 *** OPTIONALLY

14	2	EXTENSION CABLE FOR SENSOR	449 723 ... 0	28			
13	3	TEST CONNECTION	463 703 036 0	27	1	SUPPLY (POWER) CABLE	449 135 ... 0
12	1	TEST CONNECTION	463 703 120 0	26	1	SUPPLY (POWER) CABLE	449 347 ... 0
11	1	TEST CONNECTION	463 703 115 0	25	1	CAN-ROUTER	446 122 050 0
10	4	KIT	* 423 903 532 2	24	1	COUPLING HEAD AUTOM. BRAKE	952 200 222 0
9	4	TRISTOP BRAKE ACTUATOR	925 0	23	1	COUPLING HEAD AUTOM. SUPPLY	952 200 221 0
8	1	CHECK VALVE	434 014 000 0	22	2	HOSE CLAMP	451 999 ... 2
7	1	TRAILER-MODULATOR W.EXTENSION MODUL	480 102 ... 0	21	1	AIR RESERVOIR	950 0
6	2	DRAIN VALVE	934 300 001 0	20	1	TRAILER CONTROL VALVE	973 0
5	2	HOSE CLAMP	451 999 ... 2	19	1	TWO WAY VALVE	434 208 02. 0
4	1	AIR RESERVOIR	950 0	18	2	ABS-SENSOR	441 032 8.. 0
3	1	PARK-RELEASE-EMERG.-VALVE (PREV)	971 002 9.. 0	17	1	DIAGNOSTIC CABLE	*** 449 611 ... 0
2	1	COUPLING HEAD W. INT.LINE FILTER	952 201 ... 0	16	1	DOUBLE CUT-OFF VALVE	434 500 003 0
1	1	COUPLING HEAD W. INT.LINE FILTER	952 201 ... 0	15	1	SUPPLY (POWER) CABLE	449 133 ... 0
Pos.	Pcs.	Denomination	Product Identification No.	Pos.	Pcs.	Denomination	Product Identification No.

Copyright WABCO®		WABCO	
Date	Signature		
Drawn		TRAILER - EBS E	
2012-07-11	BURMESTER	FOR 2-AXLES-SEMITRAILER WITH CAN-ROUTER 2S/2M	
Checked			
2012-07-11	CHRONIS		
Expert			
BURMESTER			
Mass	Scale	Material No.	Date of first issue:2012-07-11
-	-	841 701 271 0	Doc.Code
KG	-		Language
Size	CAD System		Sheet
A 3	Pro/E		002 EN 1/1
		ECN-No.	Revision
			4990
		Techn. Resp.	Replacement for