

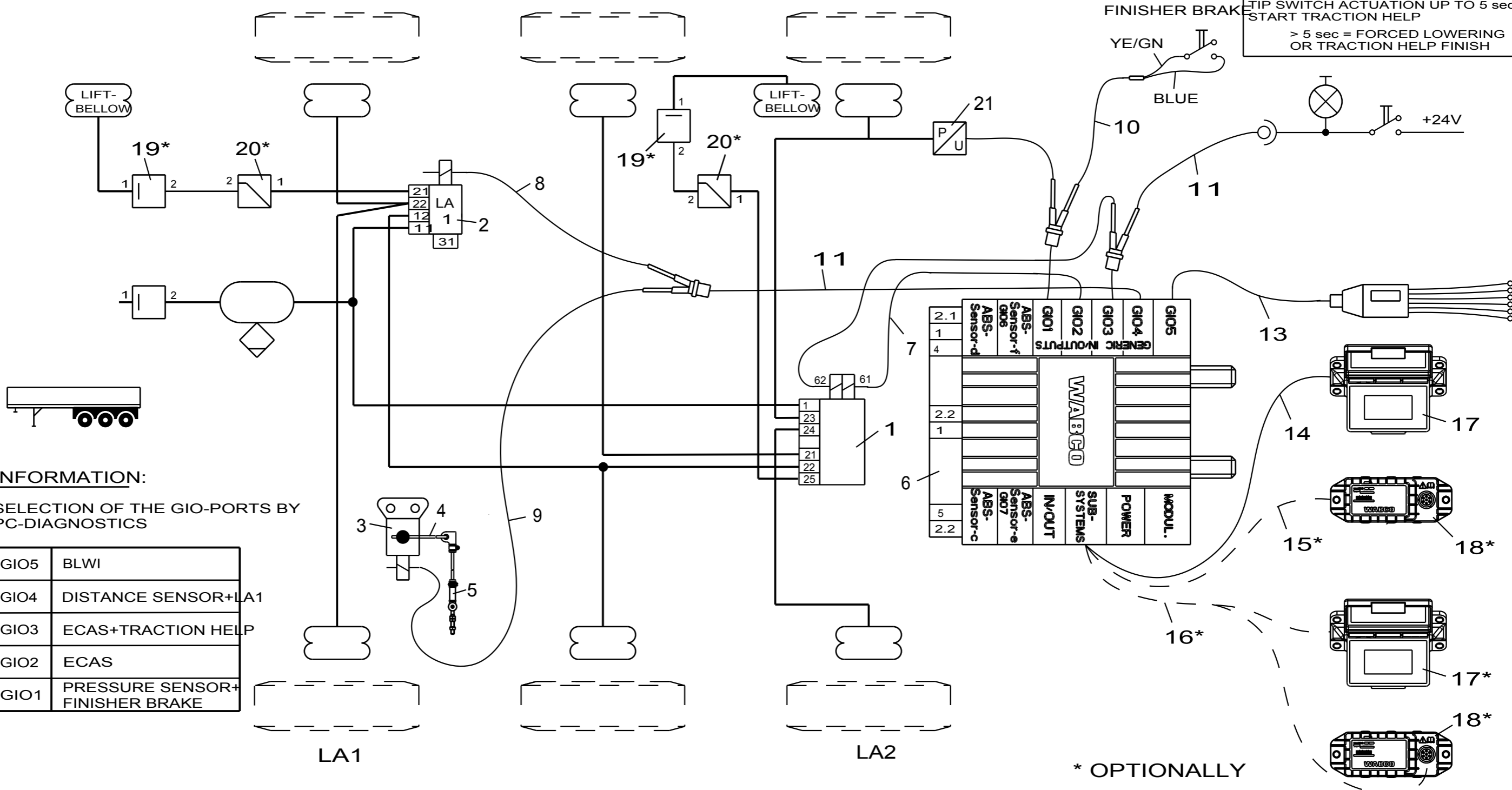
Non e permesso consegnare a terzi o riprodurre questo documento, ne utilizzare il contenuto o renderlo comunque noto a terzi senza autorizzazione esplicita. Ogni infrazione costituirà un evidente abuso e comporterà il risarcimento dei danni subiti. E' fatta riserva di tutti i diritti derivanti da brevetti o modelli.

Toute communication ou reproduction de ce document, toute exploitation ou communication de son contenu sont interdites, sauf autorisation expresse. Tout manquement a cette regle constitue un abus evident et expose son auteur au versement de dommages et interets. Tous droits de propriete industrielle reserves, notamment en matiere de brevets et de modeles.

Weitergabe sowie Vervielfaeltigung dieser Unterlage, Verwertung und Mitteilung ihres Inhalts nicht gestattet, soweit nicht ausdruecklich zugestanden. Zuwiderhandlungen stellen einen offensichtlichlichen Missbrauch dar und verpflichten zu Schadenersatz. Alle Rechte ruer den Fall der Patentierung oder Gebrauchsmuster-Eintragung vorbehalten.

ONE-CIRCUIT AIR SUSPENSION SYSTEMS AND TRACTION HELP MUST BE AGREED WITH THE AXLE MANUFACTURER

§ 97 / 27 / EG-DIRECTIVE MUST BE OBSERVED



TIP SWITCH TRACTION HELP IN TRUCK
 TIP SWITCH ACTUATION UP TO 5 sec = START TRACTION HELP
 > 5 sec = FORCED LOWERING OR TRACTION HELP FINISH

INFORMATION:

SELECTION OF THE GIO-PORTS BY PC-DIAGNOSTICS

GIO5	BLWI
GIO4	DISTANCE SENSOR+LA1
GIO3	ECAS+TRACTION HELP
GIO2	ECAS
GIO1	PRESSURE SENSOR+FINISHER BRAKE

* OPTIONALLY

Pos.	Pcs.	Denomination	Product Identification No.	Pos.	Pcs.	Denomination	Product Identification No.
12							
11	1	CABLE-GIO Y-CONNECTOR	449 629 ... 0				
10	1	CABLE-FINISHER BRAKE	449 535 ... 0				
9	1	CABLE-DISTANCE SENSOR	449 811 ... 0	21	1	PRESSURE SENSOR	441 044 10. 0
8	1	CABLE-LIFT AXLE	449 443 ... 0	20	2	PRESSURE LIMITING VALVE	* 475 0
7	1	CABLE-L+L	449 445 ... 0	19	2	CHARGING VALVE	* 434 0
6	1	T-EBS-E-MODULATOR	480 102 ... 0	18	1	TIRE-PRESSURE MONITORING (IVTM)	* 446 220 ... 0
5	1	PUSH ROD WITH LINKAGE	433 401 003 0	17	1	SMARTBOARD	* 446 192 110 0
4	1	DISTANCE SENSOR LEVER	441 050 718 2	16	1	CABLE-SMARTBOARD AND IVTM	* 449 0
3	1	DISTANCE SENSOR	441 050 100 0	15	1	CABLE-IVTM	* 449 913 ... 0
2	1	LIFTAXLE VALVE	ONE-CIRCUIT 463 084 ... 0	14	1	CABLE-SMARTBOARD	* 449 911 ... 0
1	1	ECAS	LIFT+LOWERING 472 905 114 0	13	1	CABLE-BRAKE LIN. WEAR INDIC. (BLWI)	* 449 816 ... 0

Copyright WABCO

WABCO

TRAILER - EBS E

ECAS WITH TRACTION HELP FOR SEMITRAILER (VARIATION J)
 ECAS LIFTING+LOWERING, 1-POINT-CONTROL +2 LIFTAXLES

Mass	Scale	Material No.	Date of first issue:07-01-23
KG		841 802 157 0	Doc.Code Language Sheet
Size	CAD System	ECN-No.	Revision Techn. Resp.
A 3	Pro/E	123925	G 4990
		Replacement for	