

Non e permesso consegnare a terzi o riprodurre questo documento, ne utilizzare il contenuto o renderlo comunque noto a terzi senza autorizzazione esplicita. Ogni infrazione costituirà un evidente abuso e comporterà il risarcimento dei danni subiti. Effetta riserva di tutti i diritti derivanti da brevetti o modelli.

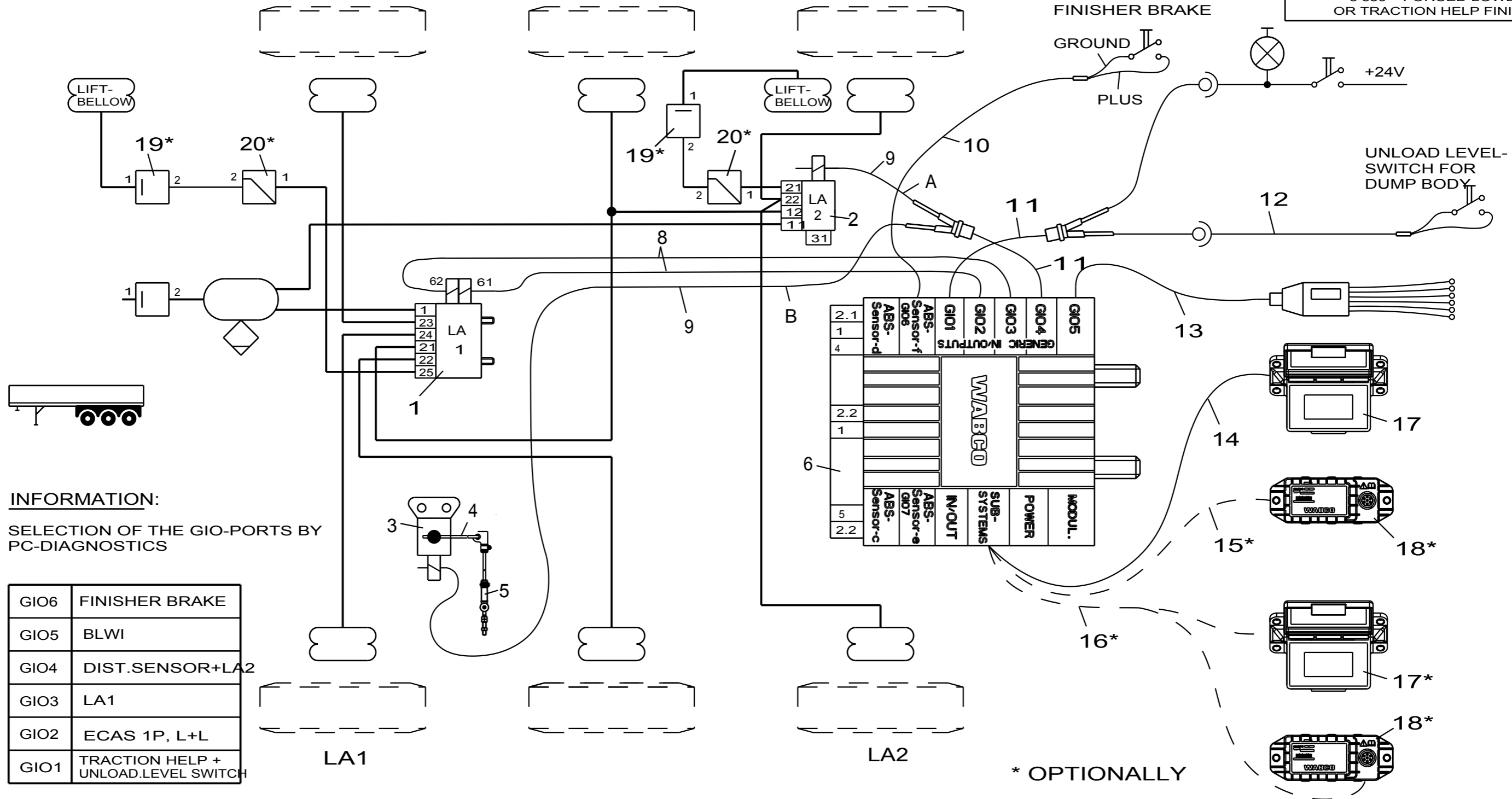
Toute communication ou reproduction de ce document, toute exploitation ou communication de son contenu sont interdites, sauf autorisation expresse. Tout manquement a cette regle constitue un abus evident et expose son auteur au versement de dommages et interets. Tous droits de propriete industrielle reserves, notamment en matiere de brevets et de modeles.

Weitergabe sowie Vervielfältigung dieser Unterlage, Verwendung und Mitteilung ihres Inhalts nicht gestattet, soweit nicht ausdrücklich zugestanden. Zuwiderhandlungen stellen einen offensichtlichen Missbrauch dar und verpflichten zu Schadenersatz. Alle Rechte rüden Fall der Patentierung oder Gebrauchsmuster-Eintragung vorbehalten.

**ONE-CIRCUIT AIR SUSPENSION SYSTEMS AND TRACTION HELP MUST BE AGREED THE AXLE MANUFACTURER**

§ 97 / 27 / EG-DIRECTIVE MUST BE OBSERVED

TIP SWITCH TRACTION HELP IN TRUCK  
TIP SWITCH ACTUATION UP TO 5 sec = START TRACTION HELP  
> 5 sec = FORCED LOWERING OR TRACTION HELP FINISH



**INFORMATION:**

SELECTION OF THE GIO-PORTS BY PC-DIAGNOSTICS

GIO6	FINISHER BRAKE
GIO5	BLWI
GIO4	DIST.SENSOR+LA2
GIO3	LA1
GIO2	ECAS 1P, L+L
GIO1	TRACTION HELP + UNLOAD.LEVEL SWITCH

12	1	CABLE-UNLOAD.LEVEL	TO Y-CABLE	449 762 000 0				
11	2	CABLE-GIO Y-CONNECT.		449 629 000 0				
10	1	CABLE-FINISHER BRAKE		449 535 000 0				
9	2	CABLE-DIST.SENSOR/LA		449 752 000 0				
8	1	CABLE-ECAS		449 445 000 0	20	2	PRESSURE LIMITING VALVE	* 475 ... .. 0
7					19	2	CHARGING VALVE	* 434 ... .. 0
6	1	T-EBS E-MODULATOR		480 102 ... 0	18	1	TIRE-PRESSURE MONITORING (IVTM)	* 446 220 ... 0
5	1	PUSHROD WITH LINKAGE		433 401 003 0	17	1	SMARTBOARD	* 446 192 110 0
4	1	DISTANCE SENSOR LEVER		441 050 718 2	16	1	CABLE-SMARTBOARD AND IVTM	* 449 ... .. 0
3	1	DISTANCE SENSOR		441 050 100 0	15	1	CABLE-IVTM	* 449 913 000 0
2	1	LIFTAXLE VALVE	ONE-CIRCUIT	463 084 ... 0	14	1	CABLE-SMARTBOARD	* 449 911 000 0
1	1	ECAS-BLOCK	(Li+Lo,LA)	472 905 114 0	13	1	CABLE-BRAKE LIN. WEAR INDIC.(BLWI)	* 449 816 000 0
Pos.	Pcs.	Denomination		Product Identification No.	Pos.	Pcs.	Denomination	Product Identification No.

Copyright WABCO®

Date: 06-07-07 Signature: APITHY

Drawn: APITHY

Checked: GROSSKURTH

Expert: GROSSKURTH

TRAILER - EBS E FOR SEMITRAILER AIR SUSPENSION (VARIATION K)

ECAS LIFTING+LOWERING, 1-POINT-CONTROL+2 LIFTAXLE

Material No. 841 802 158 0

Date of first issue: 06-07-07

Doc.Code 002 Language EN Sheet 1/1

ECN-No. 123992 Revision D Techn. Resp. 4990

Replacement for