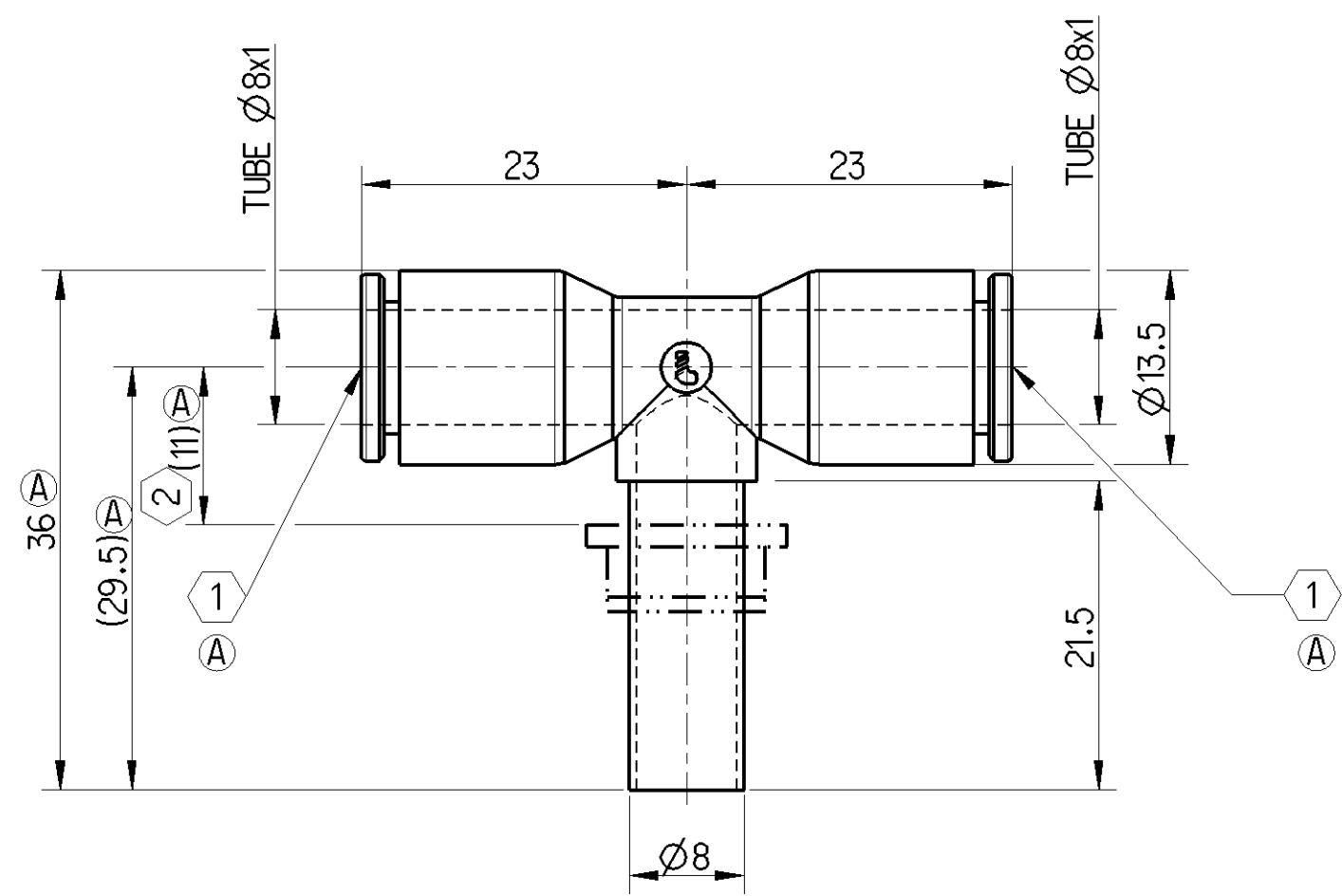


Non e permesso consegnare a terzi o riprodurre questo documento, ne utilizzare il contenuto o renderlo comunque noto a terzi senza autorizzazione esplicita. Ogni infrazione costituirà un evidente abuso e comporterà il risarcimento dei danni subiti. E' fatto riserva di tutti i diritti derivanti da brevetti o modelli.

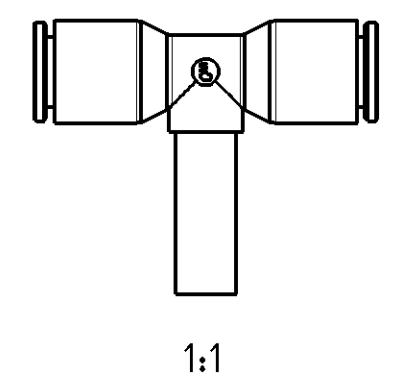
Copying of this document and giving it to others and the use or communication of the contents thereof, are forbidden without express authority. Contrivention of this restriction will constitute an evident abuse and result in a liability to the payment of damages. All rights are reserved in the event of the grant of patent or registration of a utility model or design. This document is the subject of copyright.

Toute communication ou reproduction de ce document, toute exploitation ou communication de son contenu sont interdites, sauf autorisation expresse. Tout manquement a cette regle constitue un abus evident et expose son auteur au versement de dommages et interets. Tous droits de propriete industrielle reserves, notamment en matiere de brevets et de modesles.

Weitergabe sowie Vervielfaeligung dieser Unterlage, Verwertung und Mitteilung ihres Inhalts nicht gestattet, soweit nicht ausdruecklich zugestanden. Zuwiderhandlungen stellen einen offensichtlichen Missbrauch dar und verpflichten zu Schadensersatz. Alle Rechte fuer den Fall der Patenterteilung oder Gebrauchsmuster-Eintragung vorbehalten.



- (A) 1 TUBE ENGAGEMENT LENGTH FROM CONNECTOR TOP SURFACE SHOULD BE 18±0.1
- (A) 2 ASSEMBLY RECOMMENDATION



CLEANLINESS REQUIREMENT:  
 -NO PARTICLES > 1 mm ALLOWED ACCORDING TO MANDATORY STANDARDS JED - 334 AND JED - 593.

GENERAL SPECIFICATION : JED - 762, JED - 220.

NOT SUITABLE FOR USE IN AIR BRAKE SYSTEMS.

FOR USE IN APPLICATION IN COMPRESSED AIR SYSTEMS IN COMMERCIAL VEHICLES :

- WITH POLYAMIDE TUBES ACC. DIN 74324; DIN 73378
- WITH COMPRESSED AIR ACC. JED - 848

AT WORKING CONDITIONS (CONSIDER TUBE SPEC.) :

- THERMAL RANGE OF APPLICATION : -40°C TO 80°C
- STORAGE TEMPERATURE : -40 °C TO +90 °C
- SHORT TIME RESISTANCE TO HEAT : +110°C (MAX. 1H) WITHOUT PRESSURE
- MAXIMUM SHORT TIME WORKING PRESSURE : 21.5 bar (MAX. 1H)
- WORKING PRESSURE MAXIMUM : 16 bar.

General Specification: JED-334-1, Size ISO 14405 LP		Copyright WABCO®		<b>WABCO</b>	
Further Technical Data:		Date	Signature		
Doc. Code:	Sheet:	Drawn		T - CONNECTOR	
	To	2017-03-29	Sakkarajpandi A		
General Tolerances JED-261		Checked			
Range of Nominal Dimensions ( ± mm)		Expert			
Class	1)	≤ 50	> 50 ≤ 180	> 180 ≤ 400	> 400
Fine	X	0.5	1.0	1.5	2.0
Medium		1.0	2.0	3.0	4.0
Coarse		2.0	3.5	5.0	6.5
Tapped Holes acc.		Szczytkowski			
1) Tolerance Class Applied Crossmarked		Mass	Scale	Material No.	
		0.005 KG	2:1	893 000 058 2	
		Size	CAD System	Date of first issue:	
		A 3	CREO	Doc.Code Language Sheet	
		ECN-No.		005 EN 1/1	
		Revision		Techn. Resp.	
		173554		07 A 5790	
		Replacement for			

