

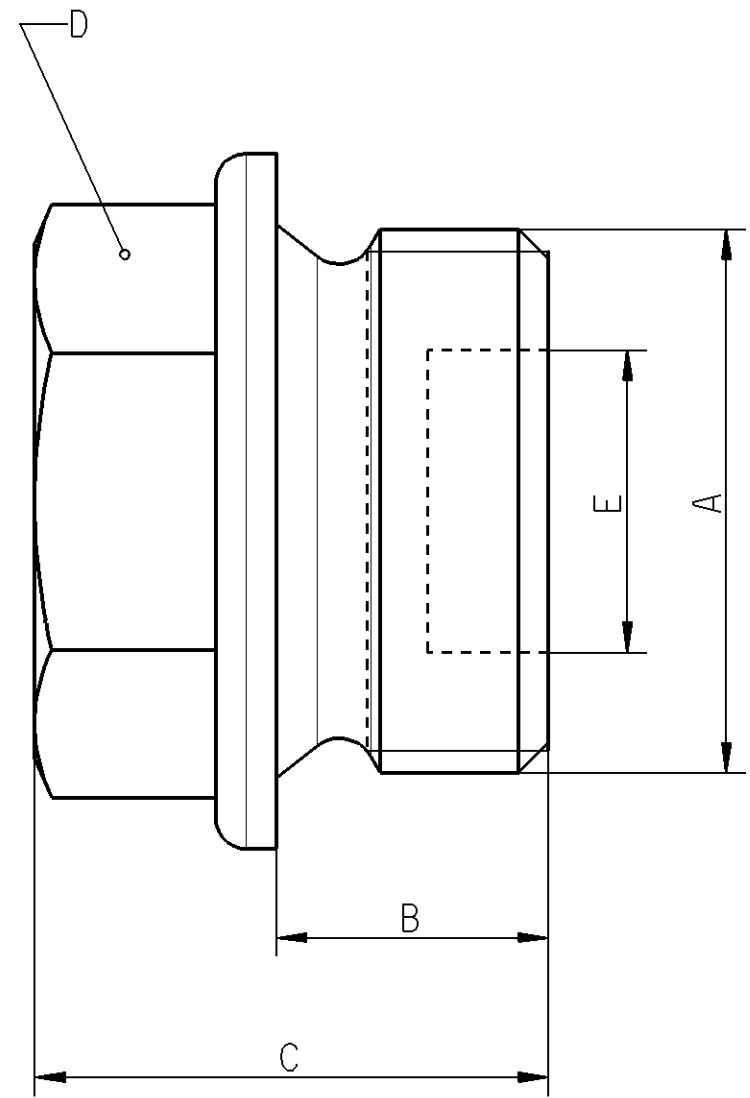
Non e permesso consegnare a terzi o riprodurre questo documento, ne utilizzare il contenuto o renderlo comunque noto a terzi senza autorizzazione esplicita. Ogni infrazione costituisce un evidente abuso e comportera il risarcimento dei danni subiti. E' fatta riserva di tutti i diritti derivanti da brevetti o modelli.

Toute communication ou reproduction de ce document, toute exploitation ou communication de son contenu sont interdites, sauf autorisation expresse. Tout manquement a cette regle constitue un abus evident et expose son auteur au versement de dommages et interets. Tous droits de propriete industrielle reserves, notamment en matiere de brevets et de modesles.

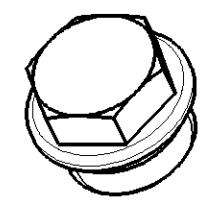
Copying of this document and giving it to others and the use or communication of the contents thereof, are forbidden without express authority. Contravention of this restriction will constitute an evident abuse and result in a liability to the payment of damages. All rights are reserved in the event of the grant of patent or registration of a utility model or design. This document is the subject of copyright.

Weitergabe sowie Vervielfaeltigung dieser Unterlage, Verwertung und Mitteilung ihres Inhalts nicht gestattet, soweit nicht ausdruücklich zugestanden. Zuwiderhandlungen stellen einen offensichtlichen Missbrauch dar und verpflichten zu Schadensersatz. Alle Rechte fuer den Fall der Patenterteilung oder Gebrauchsmuster-Eintragung vorbehalten.

1	2	3	4	5	6	7	8
A	B	C	D	E	F	G	N
M18x1,5	9	17	Hex. 17	Ø10 depth 4 ^{+0.1} / _{0.0}			O
							R



all other requirements according to :
alle uebrigen Anforderungen entsprechend : DIN7604



1:1

ⓑ
Material : JED-020-0
Surface Protection : JED-257-0

General Specification: JED-334-0		Copyright WABCO®		WABCO						
Further Technical Data:		Date	Signature							
Doc. Code:	Sheet:	To	Drawn	Screw Plug Verschlusschraube M18x1,5 Bouchon fileté Tappo filettato						
General Tolerances JED-261			2012-01-04				Guemues			
Range of Nominal Dimensions (± mm)			Checked				2012-01-04	Maertin		
Class 1)			Expert				Maertin			
	≤ 50	> 50 ≤ 180	> 180 ≤ 400	> 400	Material No.	Date of first issue: 2008-06-26				
Fine	0.5	1.0	1.5	2.0	893 023 001 4	Doc.Code	Language	Sheet		
Medium	1.0	2.0	3.0	4.0		005	ML	1/1		
Coarse	2.0	3.5	5.0	6.5						
Tapped Holes acc.		Mass		Scale	Material No.			Date of first issue: 2008-06-26		
1) Tolerance Class Applied Crossmarked		0,031 KG		4:1 1:1	893 023 001 4			Doc.Code	Language	Sheet
		Size		CAD System	ECN-No.			Revision	Techn. Resp.	Replacement for
		A 3		Pro/E	117683			2x	B	5790