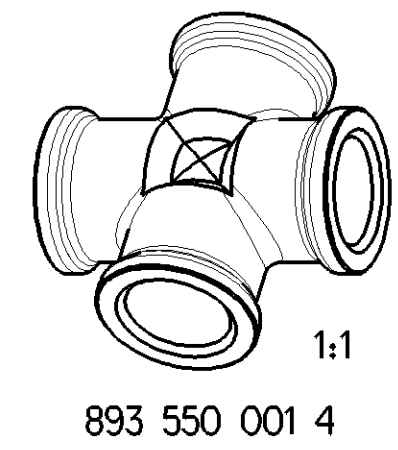
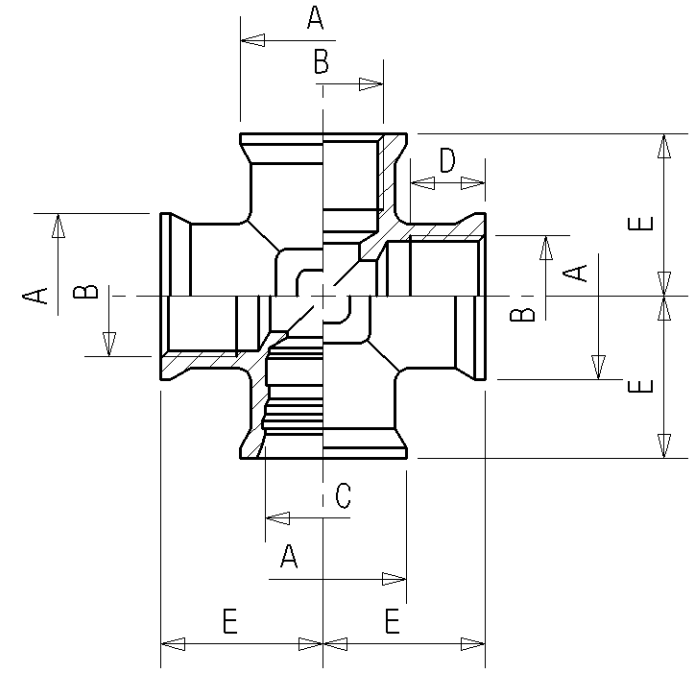
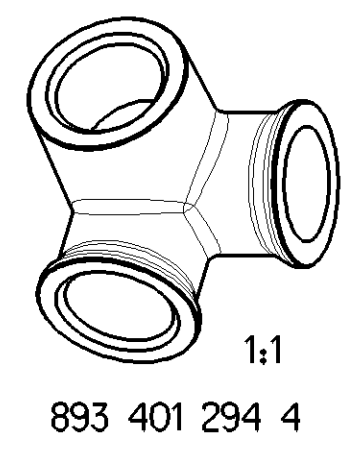
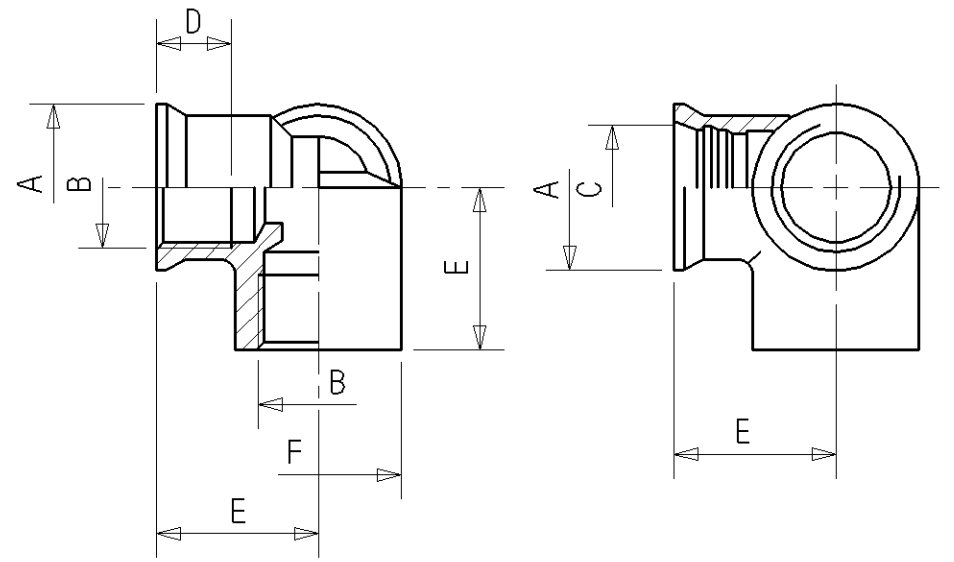


Non e permesso consegnare a terzi o riprodurre questo documento, ne utilizzare il contenuto o renderlo comunque noto a terzi senza autorizzazione esplicita. Ogni infrazione costituirà un evidente abuso e comporterà il risarcimento dei danni subiti. E' fatto riserva di tutti i diritti derivanti da brevetti o modelli. Copying of this document and giving it to others and the use or communication of the contents thereof, are forbidden without express authority. Controvention of this restriction will constitute an evident abuse and result in a liability to the payment of damages. All rights are reserved in the event of the grant of patent or registration of a utility model or design. This document is the subject of copyright.

Toute communication ou reproduction de ce document, toute exploitation ou communication de son contenu sont interdites, sauf autorisation expresse. Tout manquement a cette regle constitue un abus evident et expose son auteur au versement de dommages et interets. Tous droits de propriete industrielle reserves, notamment en matiere de brevets et de modesles. Weitergabe sowie Vervielfaeligung dieser Unterlage, Verwertung und Mitteilung ihres Inhalts nicht gestattet, soweit nicht ausdruecklich zugestanden. Zuwiderhandlungen stellen einen offensichtlichlichen Misbrauch dar und verpflichten zu Schadenersatz. Alle Rechte fuer den Fall der Patenterteilung oder Gebrauchsmuster-Eintragung vorbehalten.

1	2	3	4	5	6	7	8		
Part number	Part name	A	B	C P5 PLUG-IN	D	E	F	Torque(Nm)	Weight [g] Theoretical
<b>Tolerance:</b>		±0,3		±0,04	Min.	+1,0	±0,3	-	-
893 401 294 4	Push in Coupling	Ø22	M16x1,5	Ø15,2	10	21,5	Ø22	30(35)	(80)
893 550 001 4	Push in Coupling						-		(80)



**CLEANLINESS REQUIREMENT:**

NO PARTICLES >1MM ALLOWED ACC. TO MANDATORY STANDARD JED-334 AND JED-593

AREA: FOR THE WHOLE PART (SPECIAL AGREEMENTS POSSIBLE, TO BE AGREED WITH PRODUCT ENGINEERING)

GENERAL SPECIFICATION : JED-762 ; JED-622

ENGINEERING RELATED AGREEMENTS WITH SUPPLIER HAVE TO BE MENTIONED IN THE "RELEASE OF SUPPLIER"

TIGHTENING TORQUE: RECOMMENDED TORQUE WITHOUT LUBRICATION (MAX. TORQUE) RESPECT MAX. TORQUE OF COUNTER PART

FOR USE IN APPLICATION IN COMPRESSED AIR SYSTEMS IN COMMERCIAL VEHICLES ;

- WITH COMPRESSED AIR ACC. JED-848

**MATERIAL OF FITTING:** CuZn  
**WORKING TEMPERATURE:** -40°C...+100°C  
**WORKING PRESSURE:** MAX 12,5 bar

General Specification: JED-334-1 , Size ISO 14405 LP		Copyright WABCO®		<b>WABCO</b> Push in Coupling	
Further Technical Data:		Date	Signature		
Doc. Code:	Sheet: To	2018-05-17	Bulaj		
General Tolerances JED-261		Checked	Szczulkowski		
Range of Nominal Dimensions ( ± mm)		Expert		SzcZulkowski	
Class 1)	≤ 50	> 50 ≤ 180	> 180 ≤ 400	> 400	∠
Fine	X	0.5	1.0	1.5	2.0
Medium		1.0	2.0	3.0	4.0
Coarse		2.0	3.5	5.0	6.5
Tapped Holes acc. JED-152		Mass	Scale	Material No.	
1) Tolerance Class Applied Crossmarked		see table	1:1	893 401 294 0	
		Size	CAD System	ECN-No.	Revision
		A 3	CREO	-	-
		Date of first issue:		Techn. Resp.	Replacement for
		-		5790	-
		Doc.Code		Language	Sheet
		053		EN	1/1

