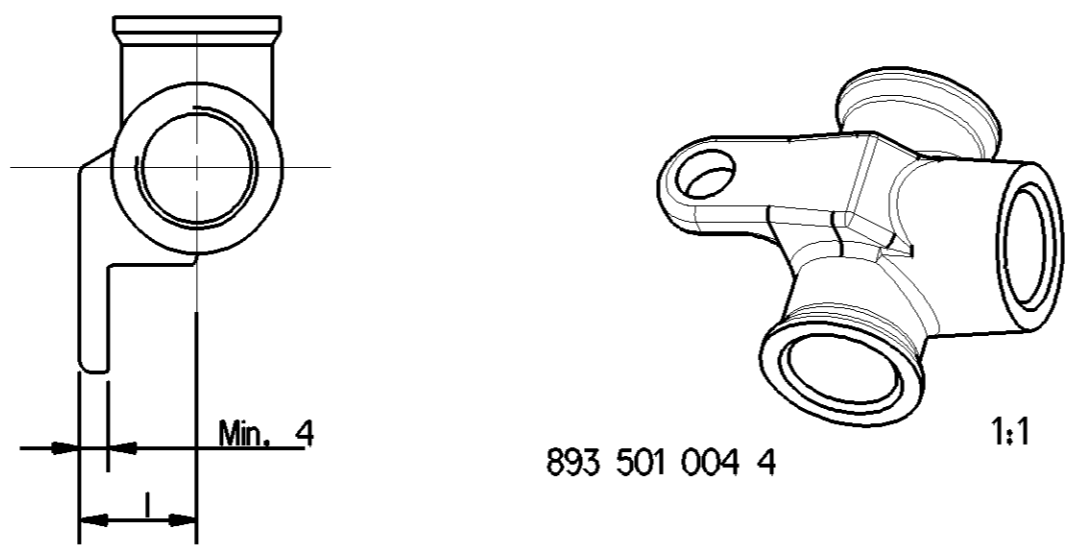
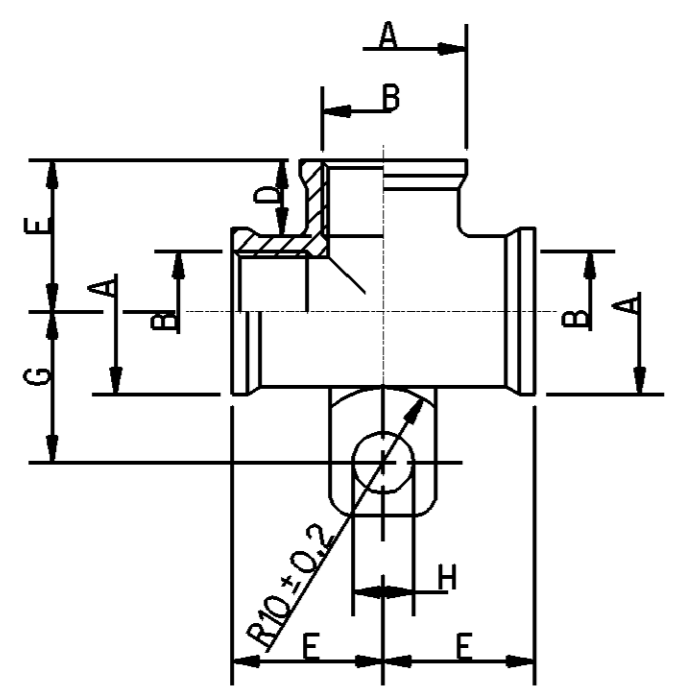
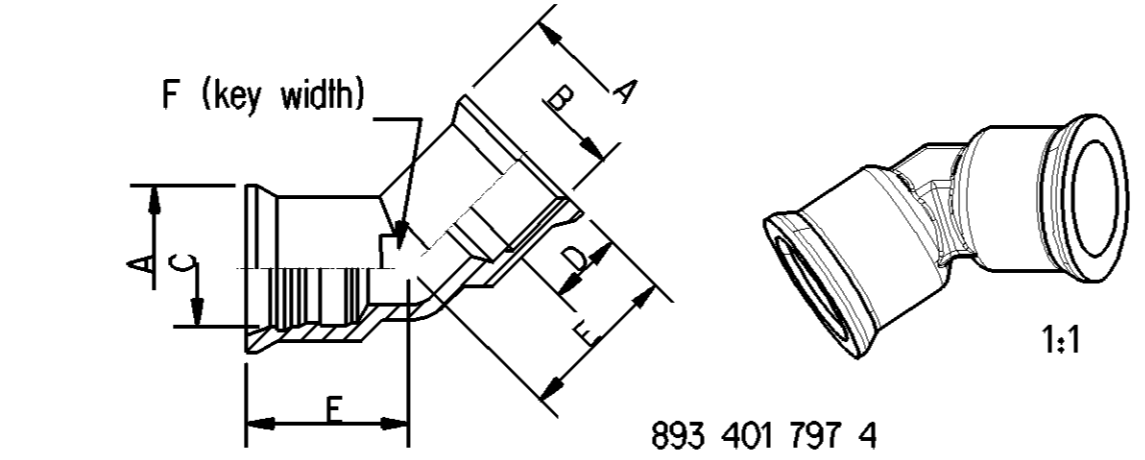
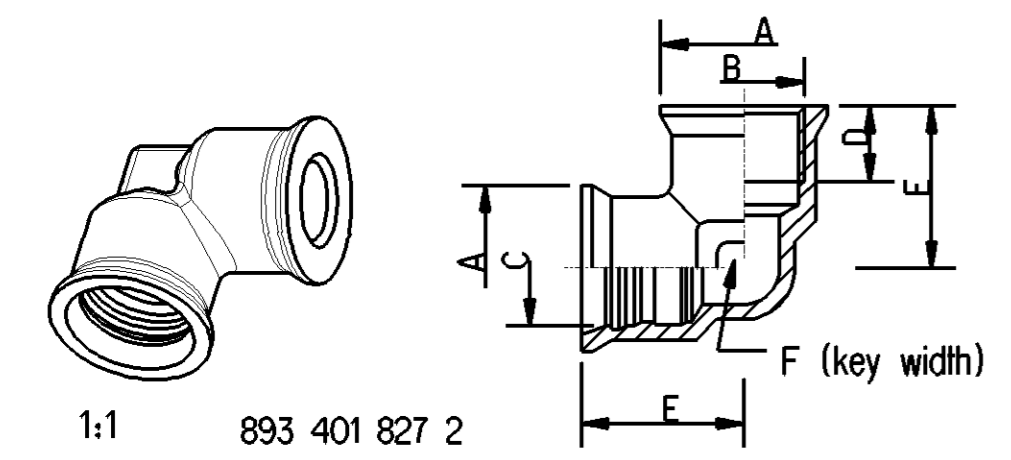
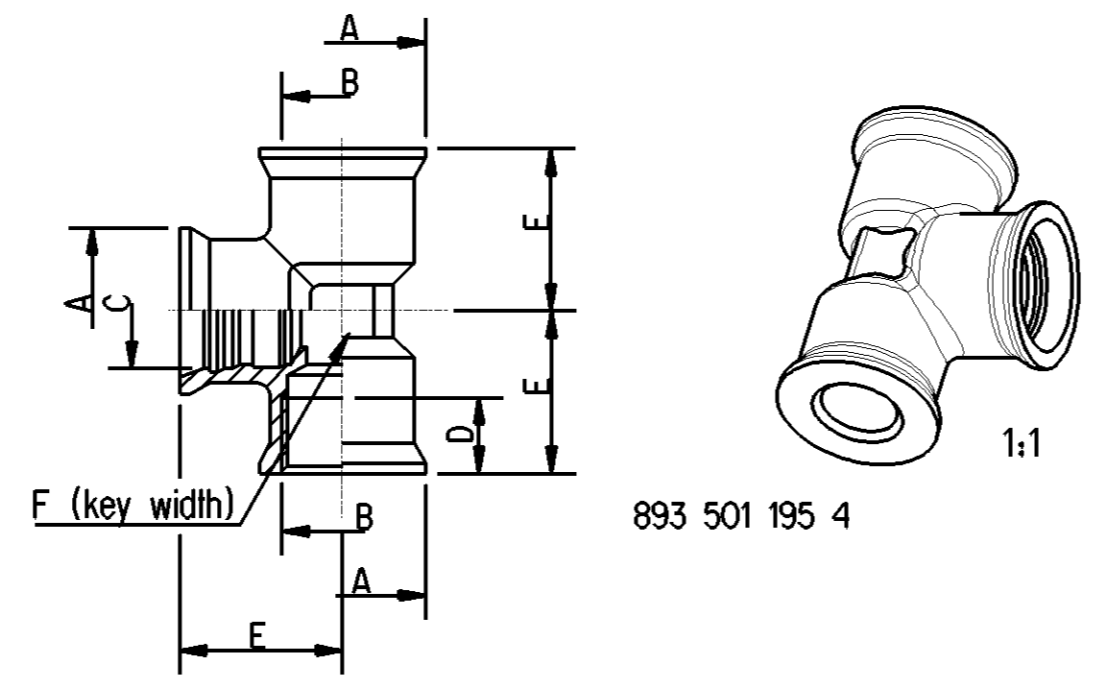
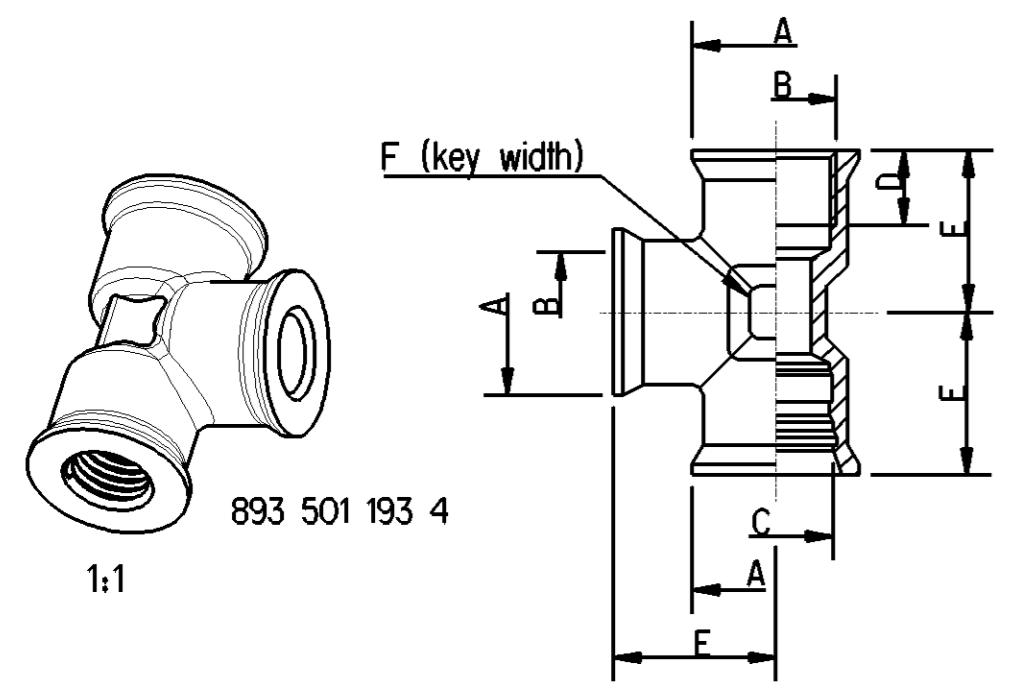


Part number	Part name	A	B	C P5 plug-in	D	E	F	G	H	I	Weight [g] Theoretical
Tolerance:		±0.4		±0.1	Min.	+1.2	-0.5	±0.6	±0.25	±0.4	
893 501 193 4	T-piece	22	M12x1.5	15.2	10	21.5	14	-	-	-	[83]
893 501 195 4	T-piece	22	M12x1.5	15.2	10	21.5	14	-	-	-	[85]
893 401 827 2	Elbow 90°	22	M12x1.5	15.2	10	21.5	14	-	-	-	[57]
893 401 797 4	Elbow	22	M16x1.5	15.2	10	21.5	14	-	-	-	[48]
893 501 004 4	T-piece	22	M16x1.5	-	10	21.5	-	20.5	8	15.5	[94]



CLEANLINESS REQUIREMENT:

NO PARTICLES >1MM ALLOWED ACC. TO MANDATORY STANDARD JED-334 AND JED-593

AREA: FOR THE WHOLE PART (SPECIAL AGREEMENTS POSSIBLE, TO BE AGREED WITH PRODUCT ENGINEERING)

GENERAL SPECIFICATION : JED-762 ; JED-622

ENGINEERING RELATED AGREEMENTS WITH SUPPLIER HAVE TO BE MENTIONED IN THE "RELEASE OF SUPPLIER"

M12x1.5 TORQUE WITHOUT LUBRICATION NOMINAL 20Nm (24Nm MAX.)

M16x1.5 TORQUE WITHOUT LUBRICATION NOMINAL 30Nm (35Nm MAX.)

FOR USE IN APPLICATION IN COMPRESSED AIR SYSTEMS IN COMMERCIAL VEHICLES :

- WITH COMPRESSED AIR ACC. JED-848

MATERIAL OF HOUSING AND NUT: CuZn
 WORKING TEMPERATURE: -40 C/+100 C
 WORKING PRESSURE: max. 12.5 bar

General Specification: JED-334-1, Size ISO 14405 LP		Copyright WABCO®		WABCO	
Further Technical Data:		Date	Signature	Push in Coupling	
Doc. Code:	Sheet: To	2018-03-26	Bulaj		
General Tolerances JED-261		Checked	Szczulkowski		
Range of Nominal Dimensions (± mm)		Expert			
Class 1)	≤ 50 > 50 ≤ 180 > 180 ≤ 400 > 400	Szczulkowski			
Fine	X 0.5 1.0 1.5 2.0	Mass	Scale	Material No.	Date of first issue: 2018-03-26
Medium	1.0 2.0 3.0 4.0	see table	1:1	893 501 193 0	Doc.Code Language Sheet
Coarse	2.0 3.5 5.0 6.5	Size	CAD System	053 EN 1/1	
Tapped Holes acc. JED-152		A 2	CREO	ECN-No.	Revision Techn. Resp.
1) Tolerance Class Applied Crossmarked				-	- 5790

Non e permesso, concesso o terzi, o riprodurre questo documento, ne utilizzare il contenuto o renderlo comunque noto o terzi senza autorizzazione esplicita. Ogni infrazione costituisce un evidente abuso e comportera il risarcimento dei danni subiti. E' fatta riserva di tutti i diritti derivanti da brevetti o modelli.
 Copying of this document and giving it to others and the use or communication of the contents thereof, are forbidden without express authority. Contravention of this restriction will constitute an evident abuse and result in a liability to the payment of damages. All rights are reserved in the event of the grant of patent or registration of a utility model or design. This document is the subject of copyright.

Toute communication ou reproduction de ce document, toute exploitation ou communication de son contenu sont interdites, sauf autorisation expresse. Tout manquement a cette regle constitue un abus evident et expose son auteur au versement de dommages et interets. Tous droits de propriete industrielle reserves, notamment en matiere de brevets et de modesles.
 Weitergabe sowie Vervielfaltigung dieser Unterlagen, Verwertung und Mitteilung ihres Inhalts nicht gestattet, soweit nicht ausdru cklich andersbestimmt. Weiterverbreitung, Verbreitung und Veroffentlichung ist untersagt. Nachdruck, auszugsweise oder sonstiges Vervielfaltigen oder Verbreiten ist ohne schriftliche Genehmigung der WABCO.