

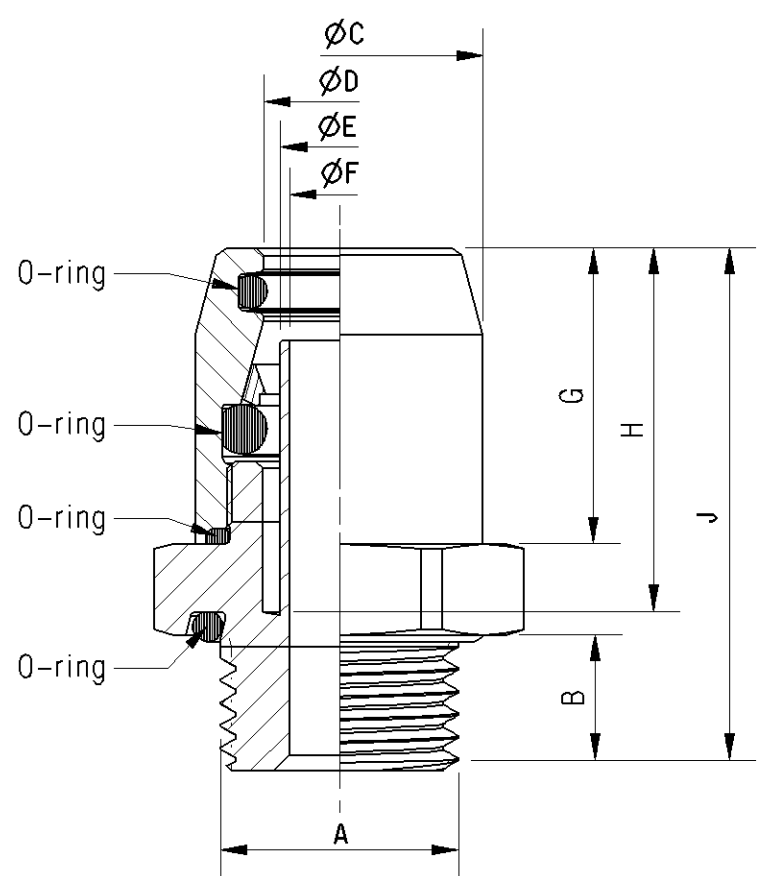
Non e permesso consegnare a terzi o riprodurre questo documento, ne utilizzare il contenuto o renderlo comunque noto a terzi senza autorizzazione esplicita. Ogni infrazione costituirà un evidente abuso e comporterà il risarcimento dei danni subiti. E' fatto riserva di tutti i diritti derivanti da brevetti o modelli.

Copying of this document and giving it to others and the use or communication of the contents thereof, are forbidden without express authority. Contrivention of this restriction will constitute an evident abuse and result in a liability to the payment of damages. All rights are reserved in the event of the grant of patent or registration of a utility model or design. This document is the subject of copyright.

Toute communication ou reproduction de ce document, toute exploitation ou communication de son contenu sont interdites, sauf autorisation expresse. Tout manquement a cette regle constitue un abus evident et expose son auteur au versement de dommages et interets. Tous droits de propriete industrielle reserves, notamment en matiere de brevets et de modesles.

Weitergabe sowie Vervielfaeligung dieser Unterlage, Verwertung und Mitteilung ihres Inhalts nicht gestattet, soweit nicht ausdruecklich zugestanden. Zuwiderhandlungen stellen einen offensichtlichlichen Misbrauch dar und verpflichten zu Schadenersatz. Alle Rechte fuer den Fall der Patenterteilung oder Gebrauchsmuster-Eintragung vorbehalten.

Part number	Part name	A	B	C	D For tube	E	F	G	H	J	HW	Torque[Nm]	O-ring (A)	Weight [g] Theoretical
Tolerance:			±0,2	-0,11		-0,1	±0,15	±0,1	±0.4	±0.4	h11			
893 803 023 0	Push in Coupling	M16x1.5	9	14	6x1	3.9	3	17.1	19.5	31	22	30(35)	15x2	(44)
893 803 024 0	Push in Coupling	M22x1.5	9										20.5x2.5	(65)
893 803 026 0	Push in Coupling	M14x1.5	9	16.5	8x1	5.85	4.8	18	20.5	33	20	24(28)	13x2	(46)
893 803 970 0	Push in Coupling	M22x1.5	9										20.5x2.5	(70)
893 800 009 0	Push in Coupling	M12x1.5	8	18	9x1.5	5.8	4.6	19.6	22.1	34.1	20	20(24)	11x2	(53)



- 1:2 893 803 023 0
- 1:2 893 803 024 0
- 1:2 893 803 026 0
- 1:2 893 803 970 0
- 1:2 893 800 009 0

**CLEANLINESS REQUIREMENT:**  
 NO PARTICLES >1MM ALLOWED ACC. TO MANDATORY STANDARD JED-334 AND JED-593

**AREA:** FOR THE WHOLE PART (SPECIAL AGREEMENTS POSSIBLE, TO BE AGREED WITH PRODUCT ENGINEERING)

**GENERAL SPECIFICATION :** JED-762 ; JED-622 ; JED-220

**ENGINEERING RELATED AGREEMENTS WITH SUPPLIER HAVE TO BE MENTIONED IN THE "RELEASE OF SUPPLIER"**

**TIGHTENING TORQUE:** RECOMMENDED TORQUE WITHOUT LUBRICATION (MAX. TORQUE) RESPECT MAX. TORQUE OF COUNTER PART

**FOR USE IN APPLICATION IN COMPRESSED AIR SYSTEMS IN COMMERCIAL VEHICLES :**  
 - WITH COMPRESSED AIR ACC. JED-848

**MATERIAL OF FITTING:** CuZn  
**MATERIAL OF INNER PARTS:** POM/PA GF  
**MATERIAL OF SEALS:** EPDM  
**WORKING TEMPERATURE:** -40°C...+100°C  
**WORKING PRESSURE:** MAX 12.5 bar

General Specification: JED-334-1 , Size ISO 14405 LP		Copyright WABCO®		<b>WABCO</b> PUSH IN COUPLING	
Further Technical Data:		Date	Signature		
Doc. Code:	Sheet: To	2018-10-09	Bulaj		
General Tolerances JED-261		2018-10-09	Szczutkowski		
Range of Nominal Dimensions ( ± mm)		Expert		Material No.	
Class 1)	≤ 50	> 50 ≤ 180	> 180 ≤ 400	> 400	±3°
Fine	X 0.5	1.0	1.5	2.0	see table KG 2:1 1:2
Medium	1.0	2.0	3.0	4.0	
Coarse	2.0	3.5	5.0	6.5	
Tapped Holes acc. JED-152		Mass	Scale	Date of first issue: 2018-10-09	
1) Tolerance Class Applied Crossmarked		A 3	CREO	893 803 973 0	Doc.Code Language Sheet
		ECN-No. Revision Techn. Resp.		053 EN 1/1	Replacement for
		-		5790	-