

TECHNICAL DATA
TECHNISCHE DATEN
CARACTERISTIQUES TECHNIQUES
CARATTERISTICHE TECNICHE

BORE: Ø85 mm
 BOHRUNG:
 ALESAGE:
 ALESAGGIO:

STROKE: 56 mm
 HUB:
 COURSE:
 CORSA:

SWEEP VOLUME: 318 cm³
 HUBRAUM:
 CYLINDREE:
 CYLINDRATA:

MAX. WORKING SPEED: n_{max} = 3000 1/min
 MAX. BETRIEBSDREHZAHL:
 VITESSE D'UTILISATION MAXI.:
 VELOCITA DI ESERCIZIO MAX.:

OVERSPEED (TEMPORARY MAX. 4 SEC.): n_{ov} = 1.3 x n_{max}
 UEBERDREHZAH (KURZZEITIG MAX. 4 SEC.):
 SURVITESSE (DE COURTE DUREE MAXI. 4 SEC.):
 SOVRAVELOCITA (BREVE TEMPO SOLO MAX. 4 SEC.):

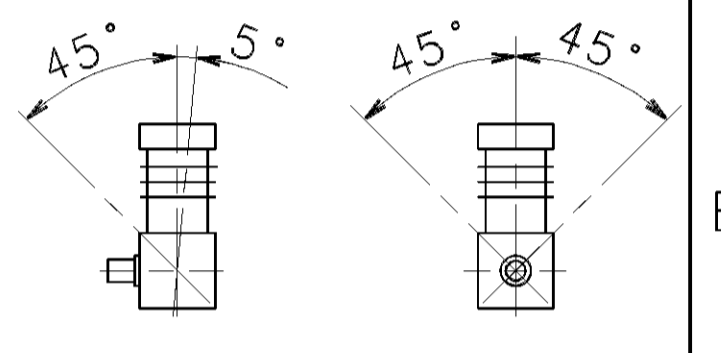
MAX. WORKING PRESSURE: p_e = 12 bar
 MAX. BETRIEBSDRUCK:
 PRESSION D'UTILISATION MAXI.:
 PRESSIONE DI ESERCIZIO MAX.:

LUBRICATION: LUBRICATION SUPPLIED FROM ENGINE
 SCHMIERART: UMLAUFSCHEMUNG MIT DRUCKOELANSCHLUSS (UD)
 GRAISSAGE: GRAISSAGE PAR CIRCULATION ALIMENTATION PAR LE MOTEUR
 LUBRIFICAZIONE: LUBRIFICAZIONE A CIRCOLAZIONE ALIMENTAZIONE DAL MOTORE

WITH WATER - COOLING REQUIRED QUANTITY COOLING WATER
 BEI WASSERKUEHLUNG ERFORDERLICHE KUEHLWASSERMENGE 6 l/min
 AVEC REFFROIDISSEMENT PAR EAU QUANTITE D'EAU NECESSAIRE
 CON RAFFREDDAMENTO AD ACQUA QUANTITA D'ACQUA NECESSARIA

END PLAY OF CRANKSHAFT: 0.08...0.38 mm
 AXIALSPIEL DER KURBELWELLE:
 JEU AXIAL DU VILEBREQUIN:
 GIOCO ASSIALE DELL'ALBERO A GOMITO:

MAX. PERMISSIBLE TILT DURING CONTINUOUS WORKING:
 MAX. ZULAESSIGE NEIGUNG IM DAUERBETRIEB:
 INCLINAISON MAX. ADMISE EN SERVICE CONTINU:
 MASSIMA INCLINAZIONE AMMESSA IN CASO DI SERVIZIO CONTINUO:



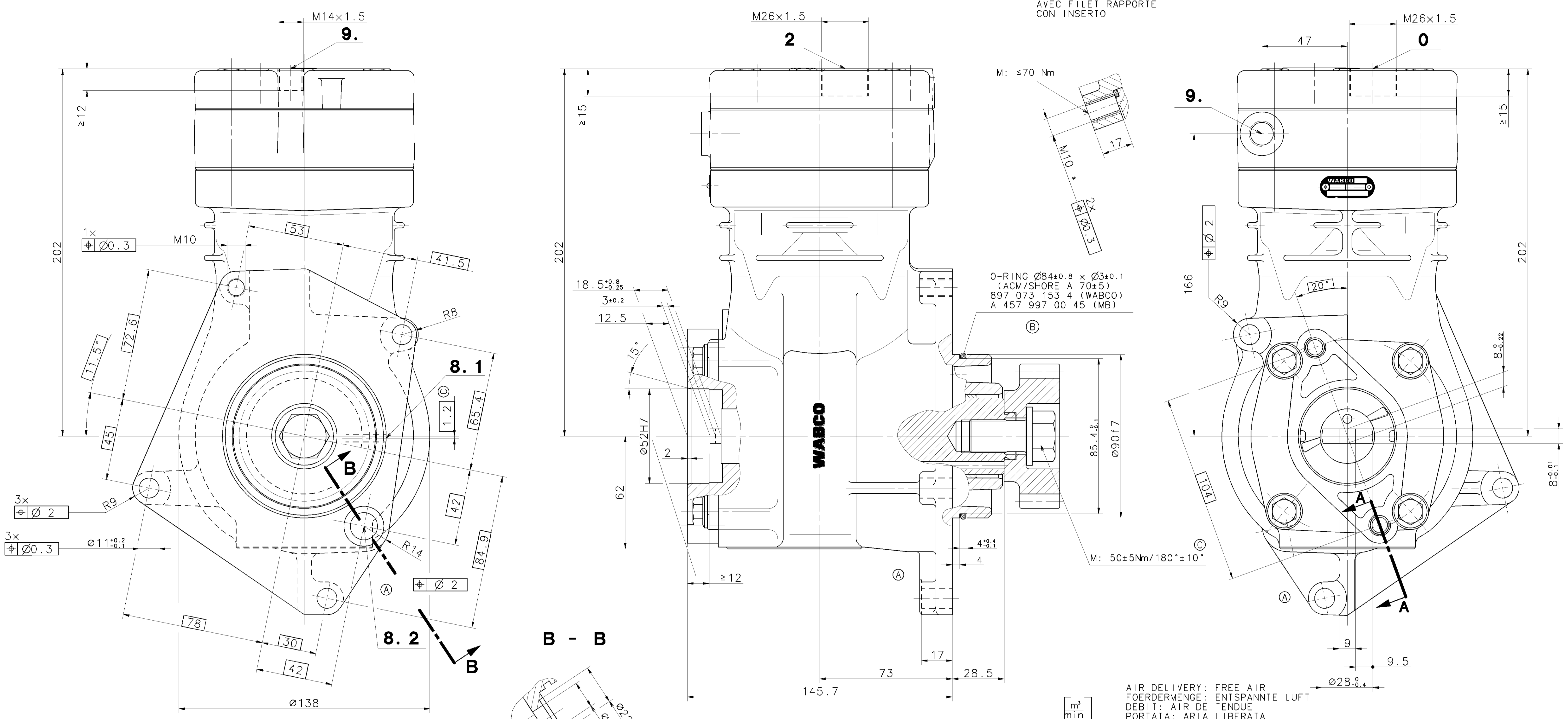
*) MAX. PERMISSIBLE PRESSURE TEMPERATURE IN SERVICE
 MAX. ZULAESSIGE DRUCKSTUTZENTEMPERATUR WAEREND DES FAHRBETRIEBES 220°C
 TEMPERATURE MAX. ADMISSIBLE EN SERVICE
 TEMPERATURA MAX. AMMISSIBILE IN SERVIZIO

- 9.** = COOLANT CONNECTION M: ≤35 Nm ①
 KUEHMITTELANSCHLUSS
 CONNEXION DE FLUIDE DE REFROIDISSEMENT
 COLLEGAMENTO LIQUIDO REFRIGERANTE
- 8.1** = OIL SUPPLY M: ≤100 Nm
 DRUCKOELANSCHLUSS
 ORIFICE D'ARRIVEE D'HUILE
 ORIFIZIO D'ARRIVO OLIO
- 0** = INLET PORT M: ≤100 Nm
 SAUGANSCHLUSS
 ASPIRATION
 ASPIRAZIONE
- 8.2** = OIL DRAIN M: ≤100 Nm
 OELRUECKLAUF
 RETOUR D'HUILE
 RITORNO OLIO
- 2** = DISCHARGE PORT M: ≤100 Nm
 DRUCKANSCHLUSS
 REFULEMENT
 COMPRESIONE

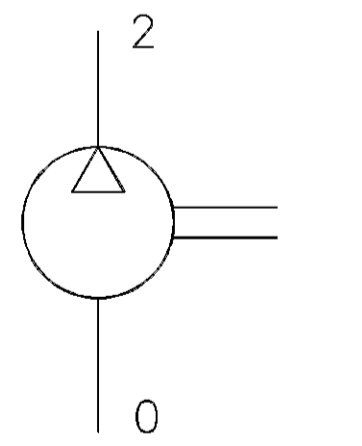
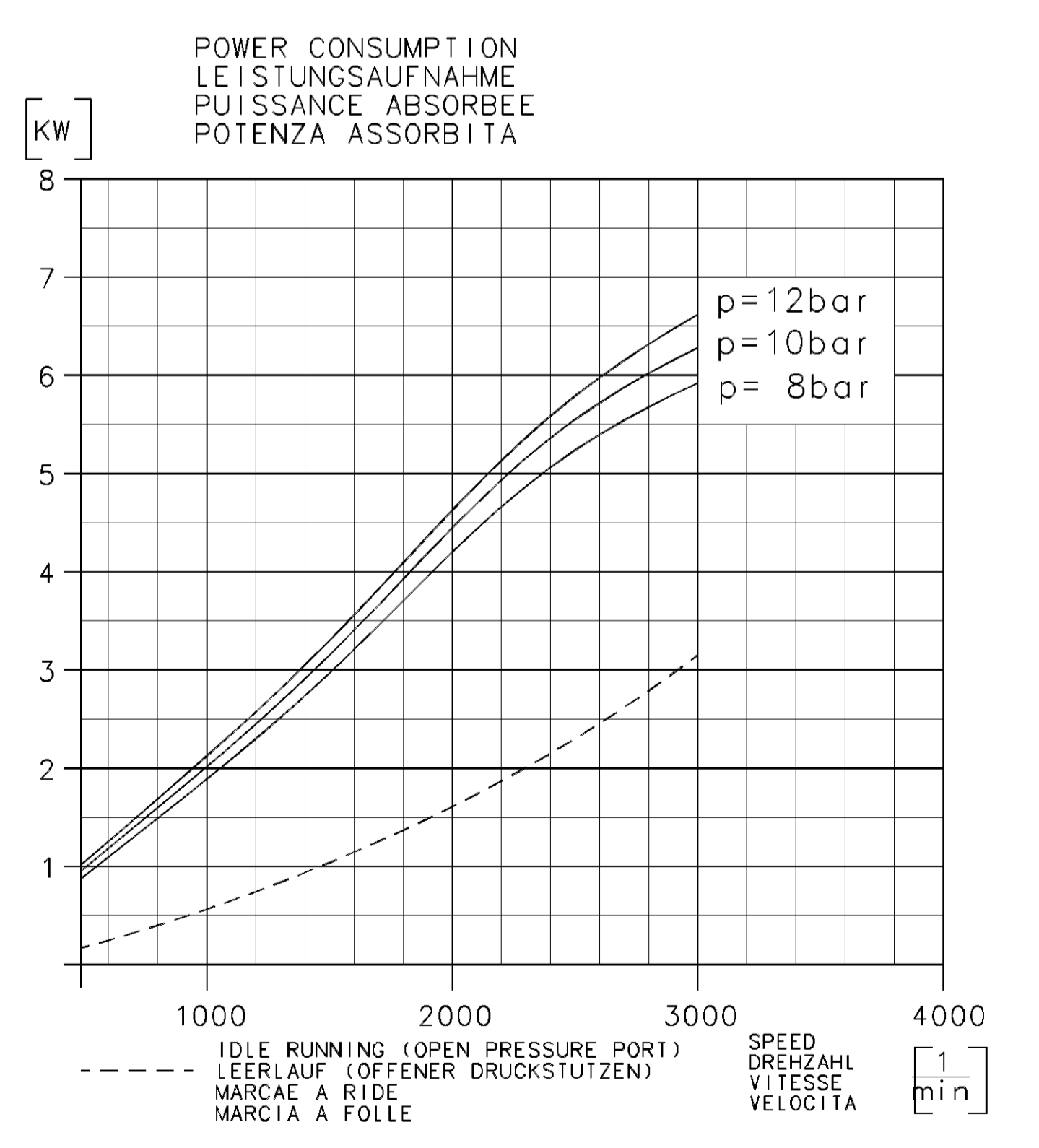
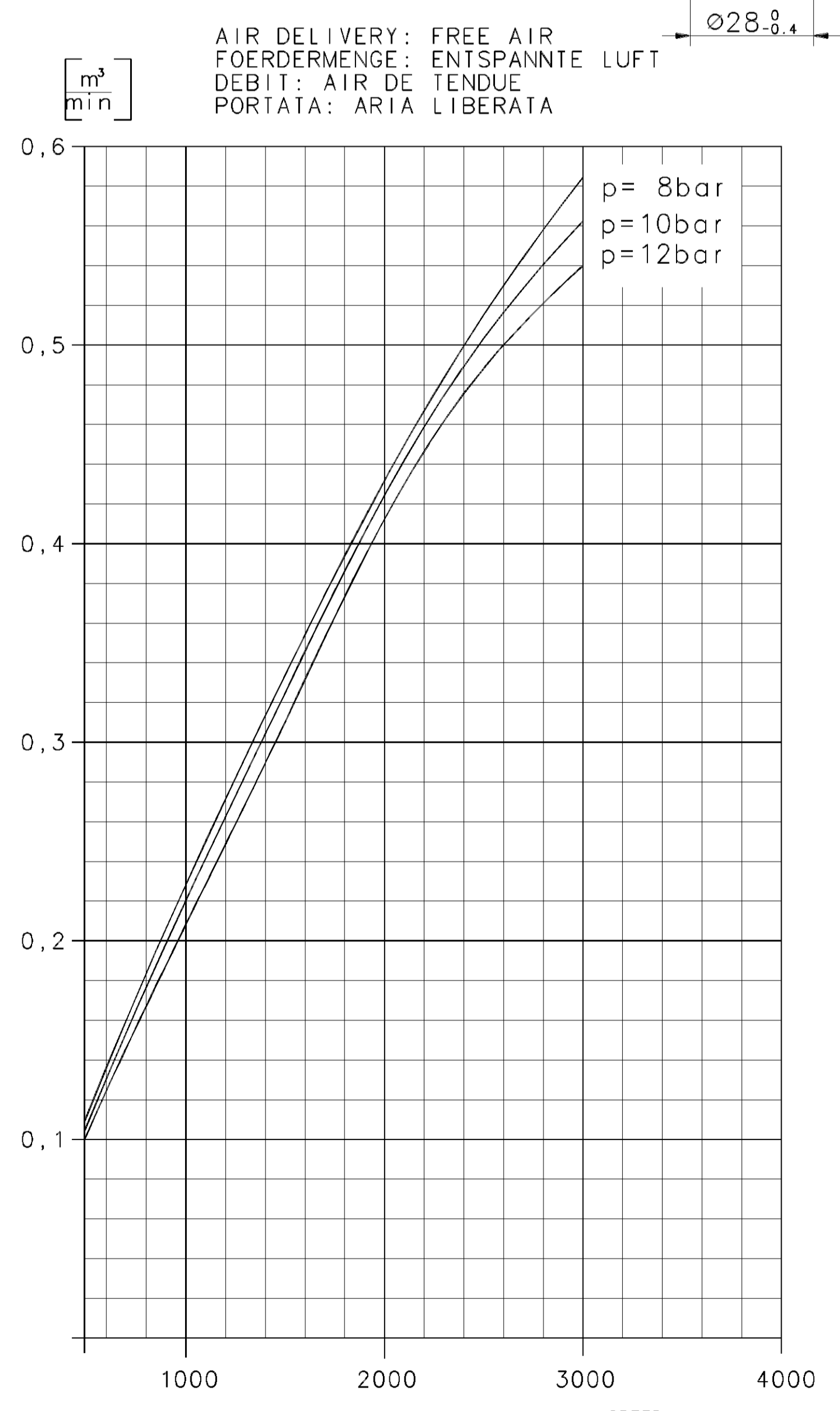
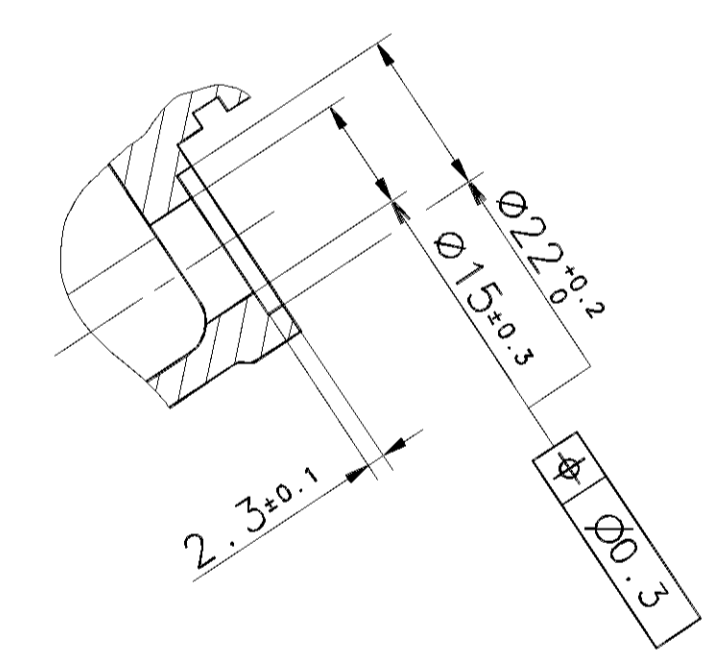
FREE FROM ASBESTOS
 ASBESTEFREI
 EXEMPT D'AMIANTE
 ESENTE D'AMIANTO

A - A

• WITH INSERT
 MIT GEWINDEEINSATZ (HELL COIL)
 AVEC FILET RAPPORTE
 CON INSERTO



B - B



GEAR SEE MB-DRG.: A 457 132 00 05
 ZAHNRAD SIEHE MB ZCHNG.: A 457 132 00 05

GENERAL SPECIFICATION: JED-324		DATE: 97-02-12		SIGNATURE: KRAMER	
FURTHER TECHNICAL DATA: SHEET: 10		DATE: 97-02-12		SIGNATURE: KRAMER	
DOC. CODE: 065642		DATE: 97-02-12		SIGNATURE: KRAMER	
RANGE OF NOMINAL DIMENSIONS (x mm): 450 6180 14000 2400		DATE: 97-02-12		SIGNATURE: KRAMER	
CLASS: 13	DATE: 97-02-12	DATE: 97-02-12	DATE: 97-02-12	DATE: 97-02-12	DATE: 97-02-12
FINE: X	0.5 1.0 1.5 2.0	065642	2x	98-09-30	065642
MEDIUM: X	1.0 2.0 3.0 4.0 5.0	065615	1x	98-03-27	065615
COURSE: X	2.0 3.5 5.0 6.5	065966	3x	97-10-20	065966
TAPPED HOLES ACC. TO: 150 4028 / JED-152	DATE: 97-10-20	DATE: 97-10-20	DATE: 97-10-20	DATE: 97-10-20	DATE: 97-10-20
TOLERANCE CLASS APPLIED ORGANIZATION: ISO 2768		DATE: 97-10-20		DATE: 97-10-20	

000000 2XA 97-10-20

(KENNFELD NR. K0995-01)

WABCO S.p.A. - Via ... - 20133 Milano - Italy
 Tel. +39 02 76001 - Fax +39 02 76002
 E-mail: wabco@wabco.com
 WABCO is a member of the MAN Group.