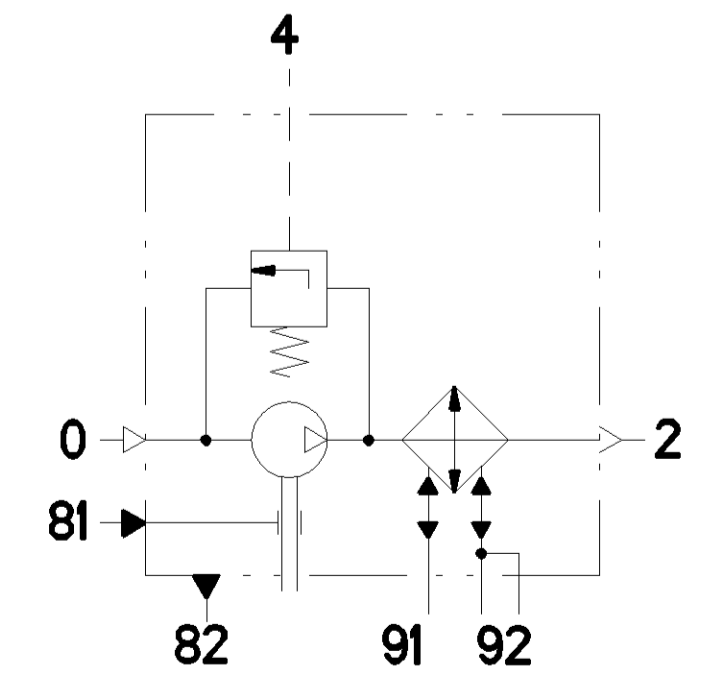
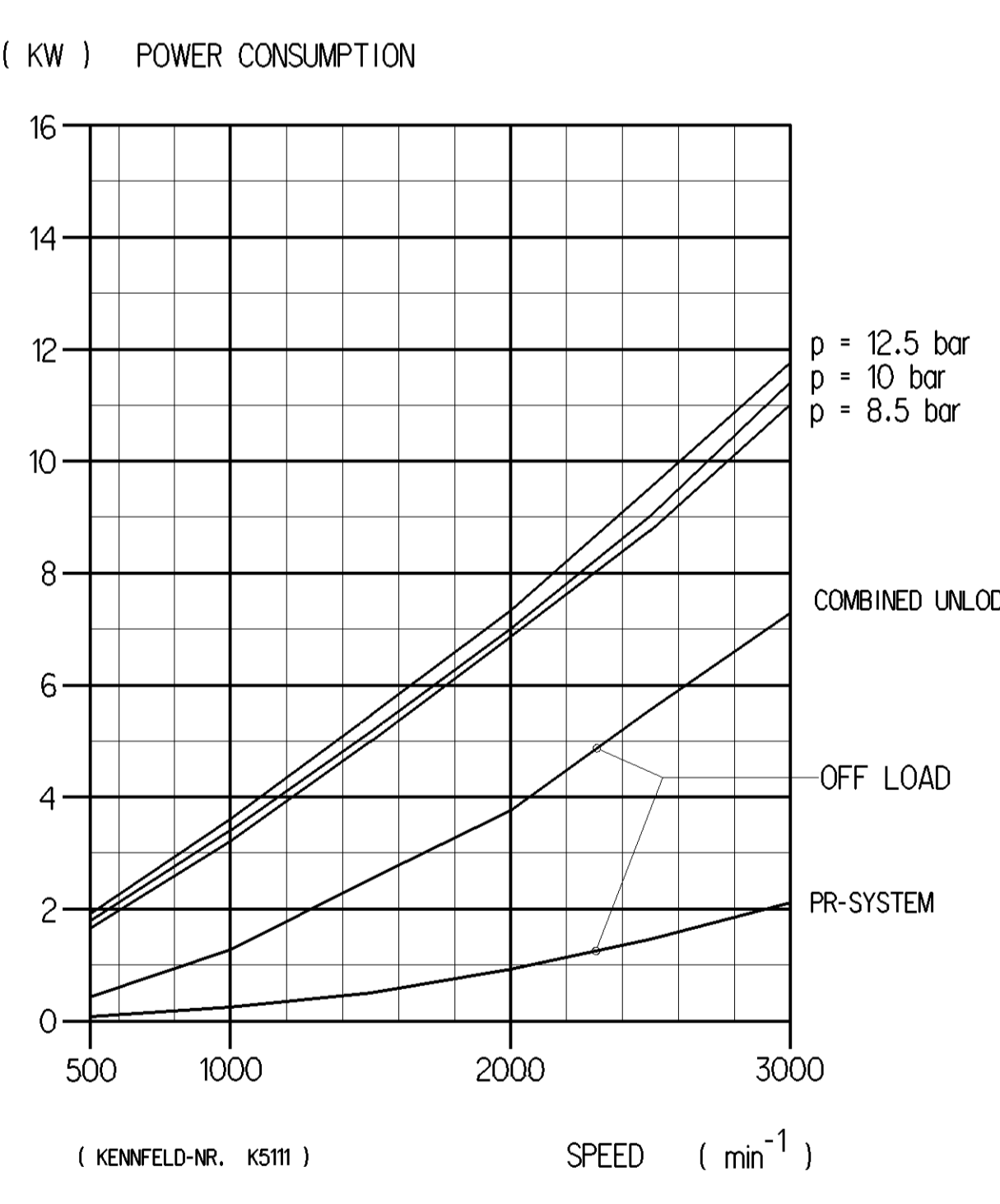
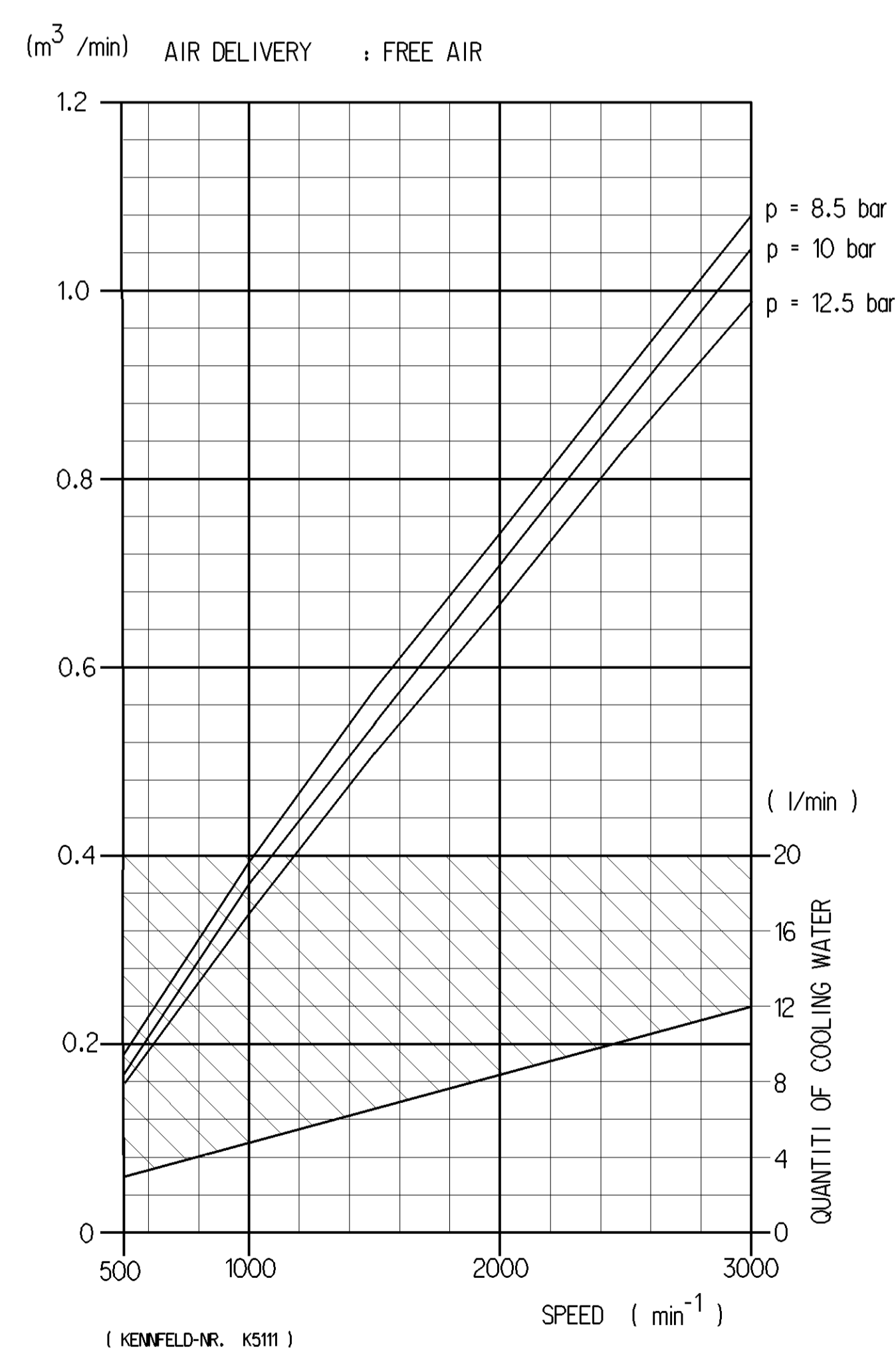
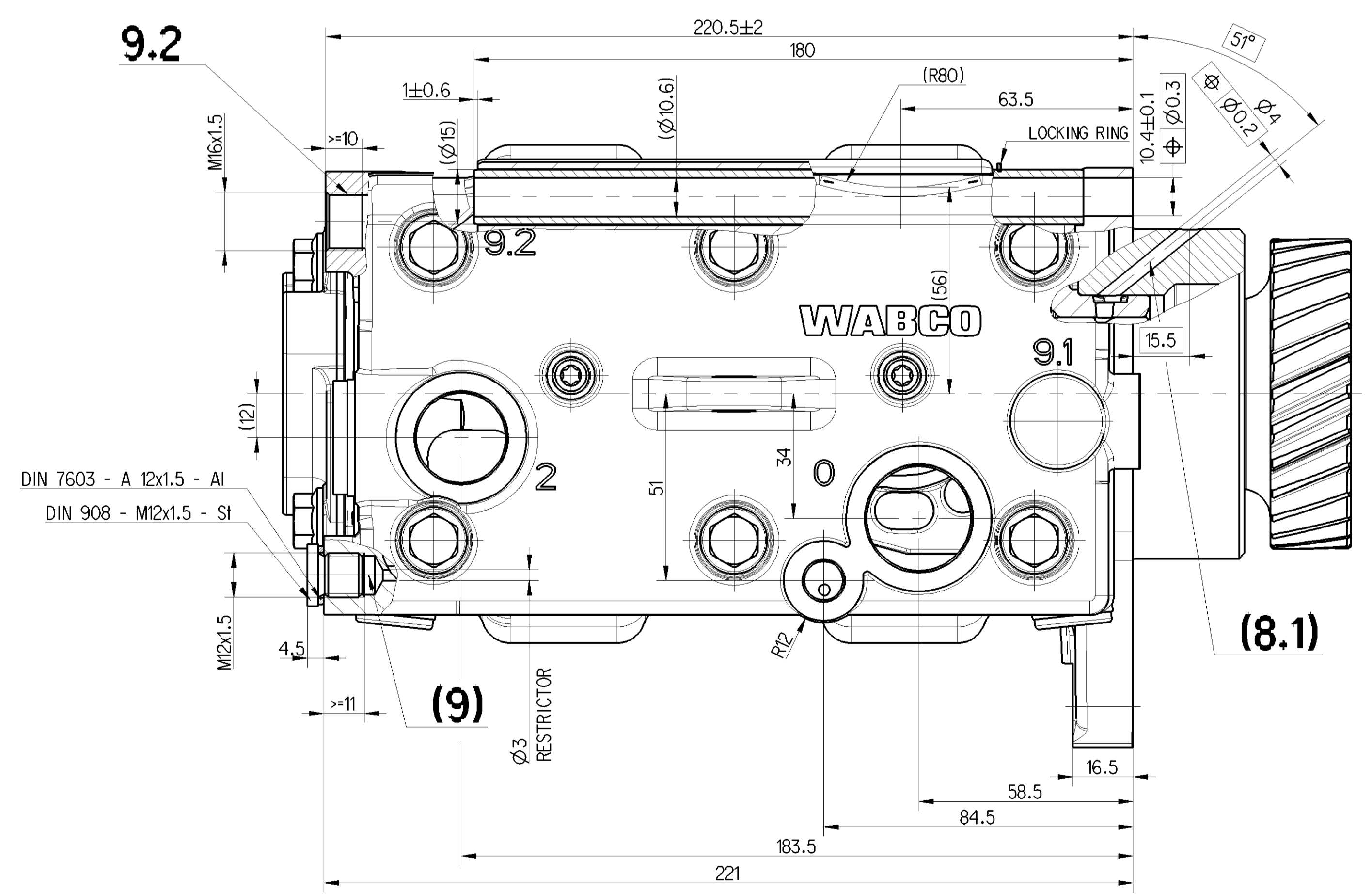
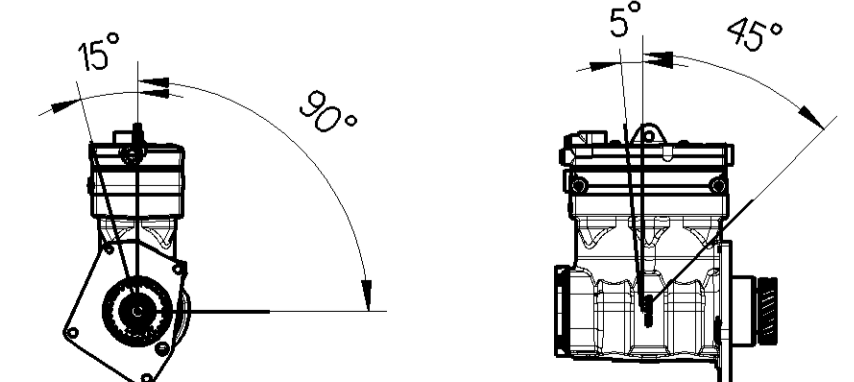


WORKING MEDIUM	AIR
COOLANT	WATER WITH ANTIFREEZE
BORE	∅ 85 mm
STROKE	56 mm
SWEPT VOLUME	636 cm ³
MAX. WORKING SPEED	n _{max} = 3000 min ⁻¹
OVERSPEED (MAX. 4 SEC.)	n _{ue} = 1.3 x n _{max}
MAX. WORKING PRESSURE	12.5 bar
MAX. PRESSURE	16 bar
LUBRICATION SUPPLIED FROM ENGINE	
PORTS PROTECTED	
FLANGE SEALING	
SURFACE PROTECTION JED-762	

0	SUCTION PORT	M ≤ 80 Nm (4)
2	DISCHARGE PORT	M ≤ 67 Nm (4)
4	GOVERNOR PORT	M ≤ 12 Nm (4)
8.1	OIL SUPPLY	
8.2	OIL DRAIN	
9.1	COOLANT CONNECTION	M ≤ 34 Nm (4)
9.2	COOLANT CONNECTION	M ≤ 34 Nm (4)
(9)	VENTING PORT	M ≤ 21 Nm (4)



MAX. PERMISSIBLE TILT DURING CONTINUOUS WORKING



General Specifications: ED-534-1, Size ISO 14400 LP		Copyright WABCO		WABCO	
Further Technical Data: 912 510 103 R		Title: System		COMPRESSOR	
Doc. Code: 005	Sheet: 1 to 5	Drawing: 2016-TI-30 Trojko		Language: Steel	
Range of Nominal Dimensions (± mm)		Drawing: 2016-12-01 Skoblon		Material No.	
Class 1: 50 ± 0.50	180 ± 0.40	Scale: 1:1		Date of 1st Issue: 2016-12-01	
Class 2: 0.5	1.0 1.5 2.0	Author: 20791		Doc. Code: 005	
Medium X: 1.0 2.0 3.0 4.0	4.0 ± 0.3	Size: C40 System		Revision: 1/1	
Course: 2.0 3.5 5.0 6.5		Tapped Holes acc.:		Replacement for:	
Tapped Holes acc.:		A 0		EN 1/1	
Tolerance class: Appoint Dimension		Scale: 1:1		Revision: 1/1	
		Year: 2016		Replacement for:	