

WORKING MEDIUM : AIR
 BETRIEBSMEDIUM : LUFT

COOLANT : WATER WITH ANTIFREEZE
 KÜHLMEDIUM : WASSER MIT FROSTSCHUTZ

BORE : Ø 85 mm
 BOHRUNG : Ø 85 mm

STROKE : 56 mm
 HUB : 56 mm

SWEEP VOLUME : 636 cm³
 HUBRAUM : 636 cm³

MAX. WORKING SPEED : n_{max} = 3000 min⁻¹
 MAX. BETRIEBSDREHZAHL : n_{max} = 3000 min⁻¹

OVERSPEED (MAX. 4 SEC.) : n_{ue} = 1.3 x n_{max}
 UEBERDREHZAHL (MAX. 4 SEC.) : n_{ue} = 1.3 x n_{max}

END PLAY OF CRANKSHAFT AXIALSPIEL DER KURBELWELLE : 0.02 ... 0.05 mm

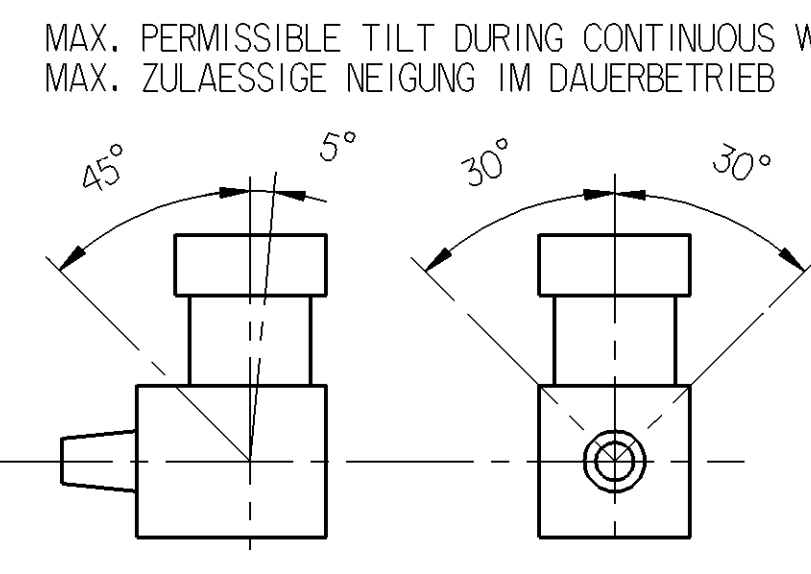
LUBRICATION SUPPLIED FROM ENGINE UMLAUFSCHEMUNG MIT DRÜCKANSCHLUSS

MAX. WORKING PRESSURE : p^{*} = 14 bar **
 MAX. BETRIEBSDRUCK : p^{*} = 14 bar **

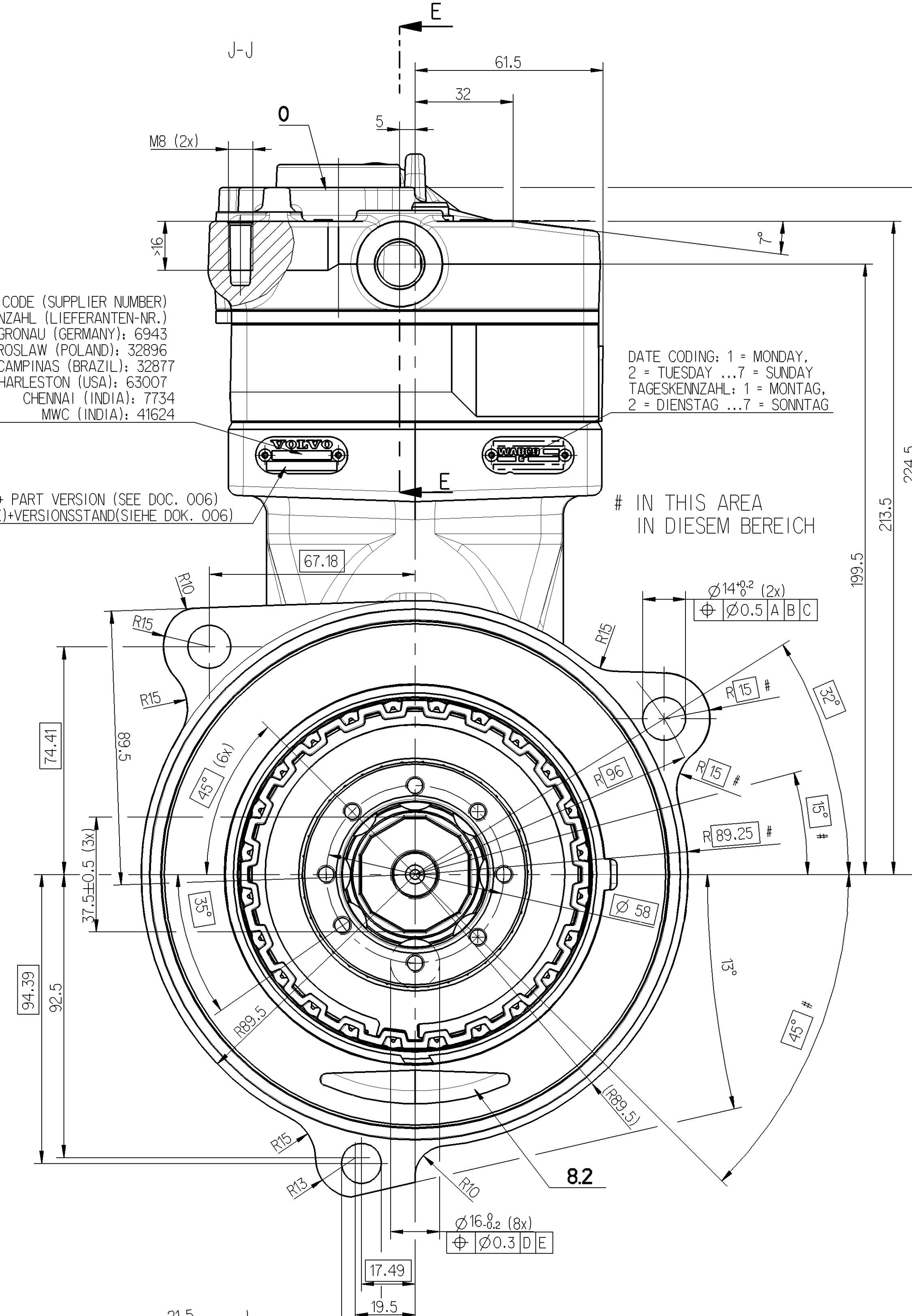
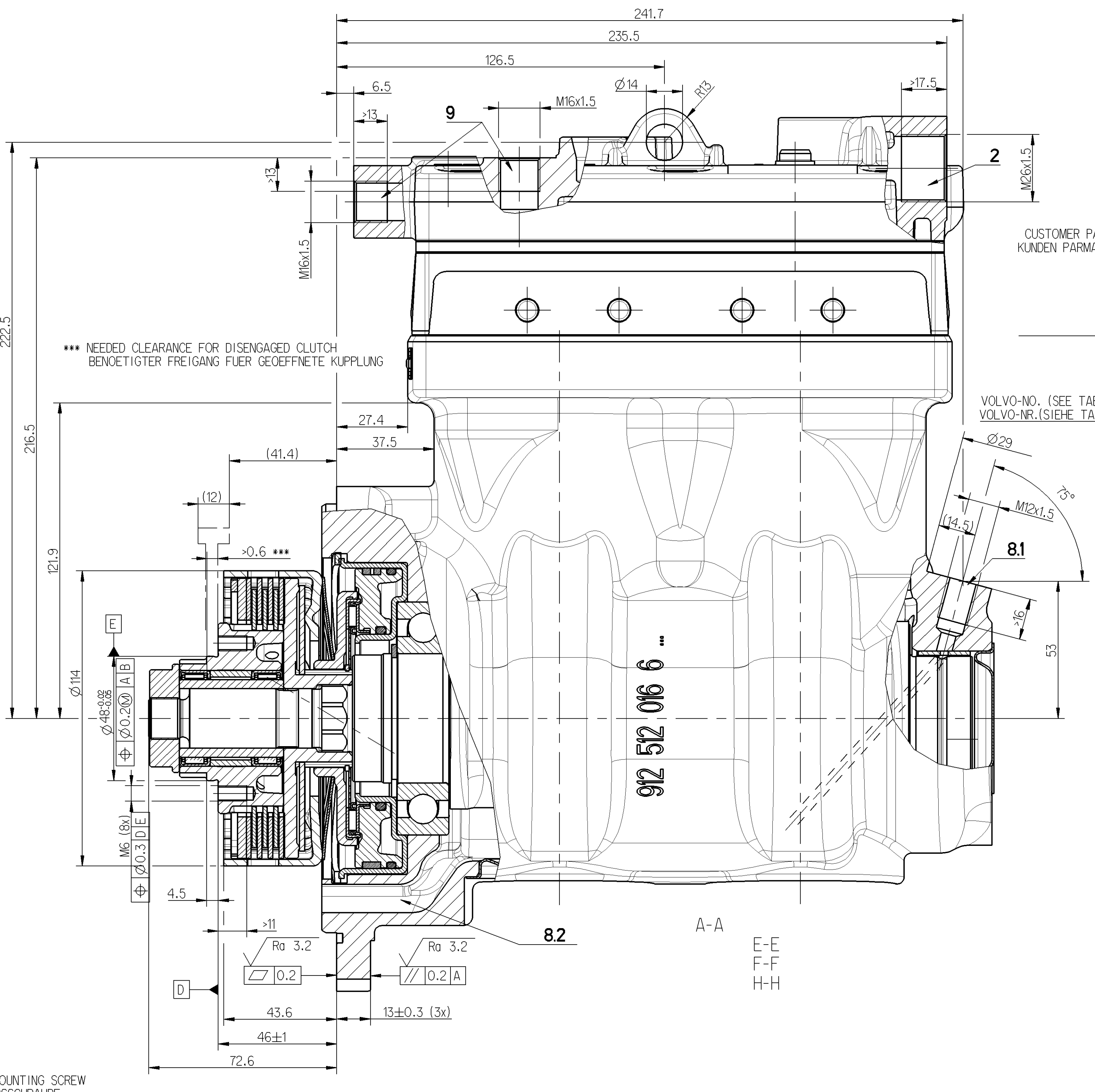
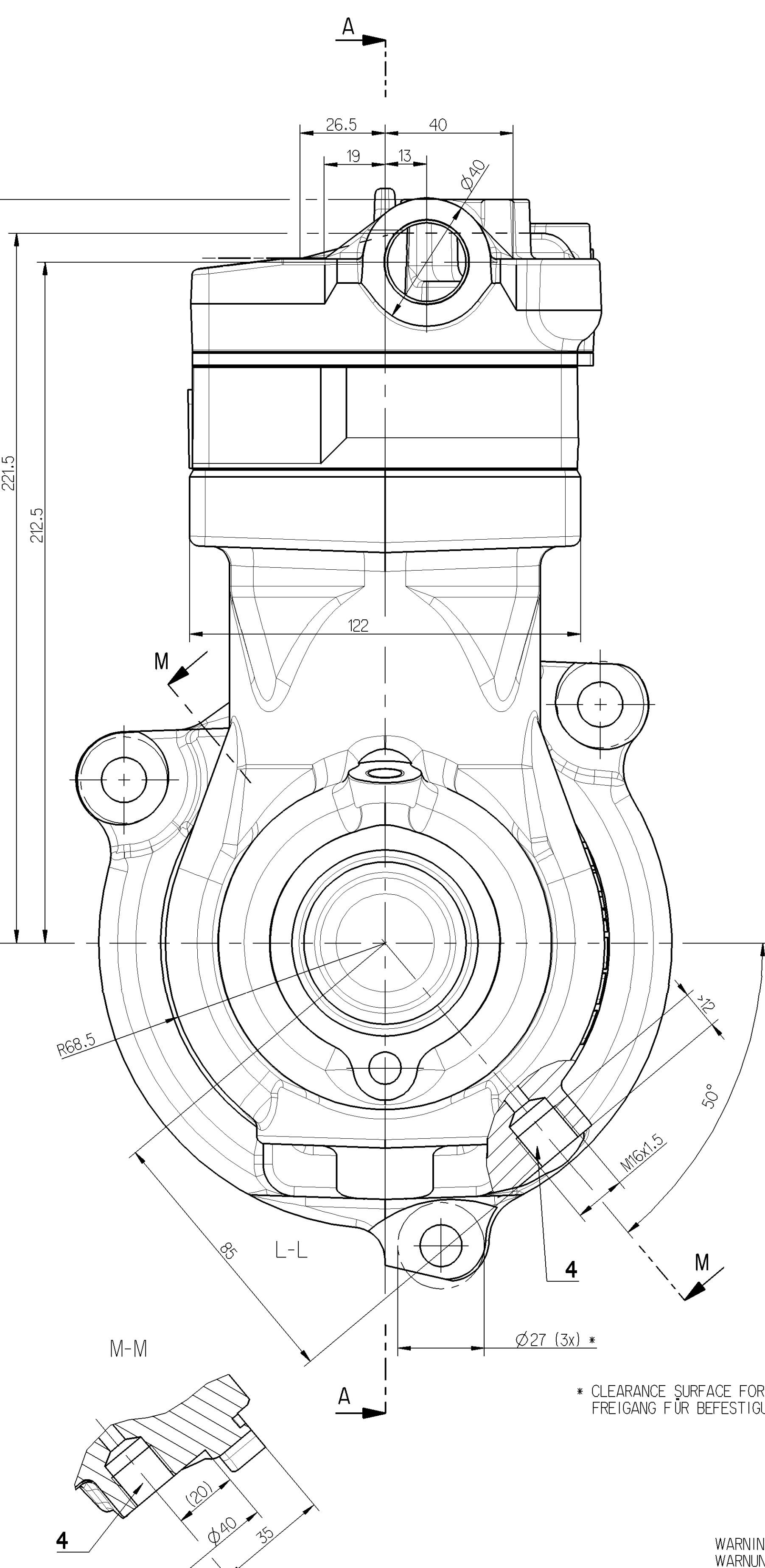
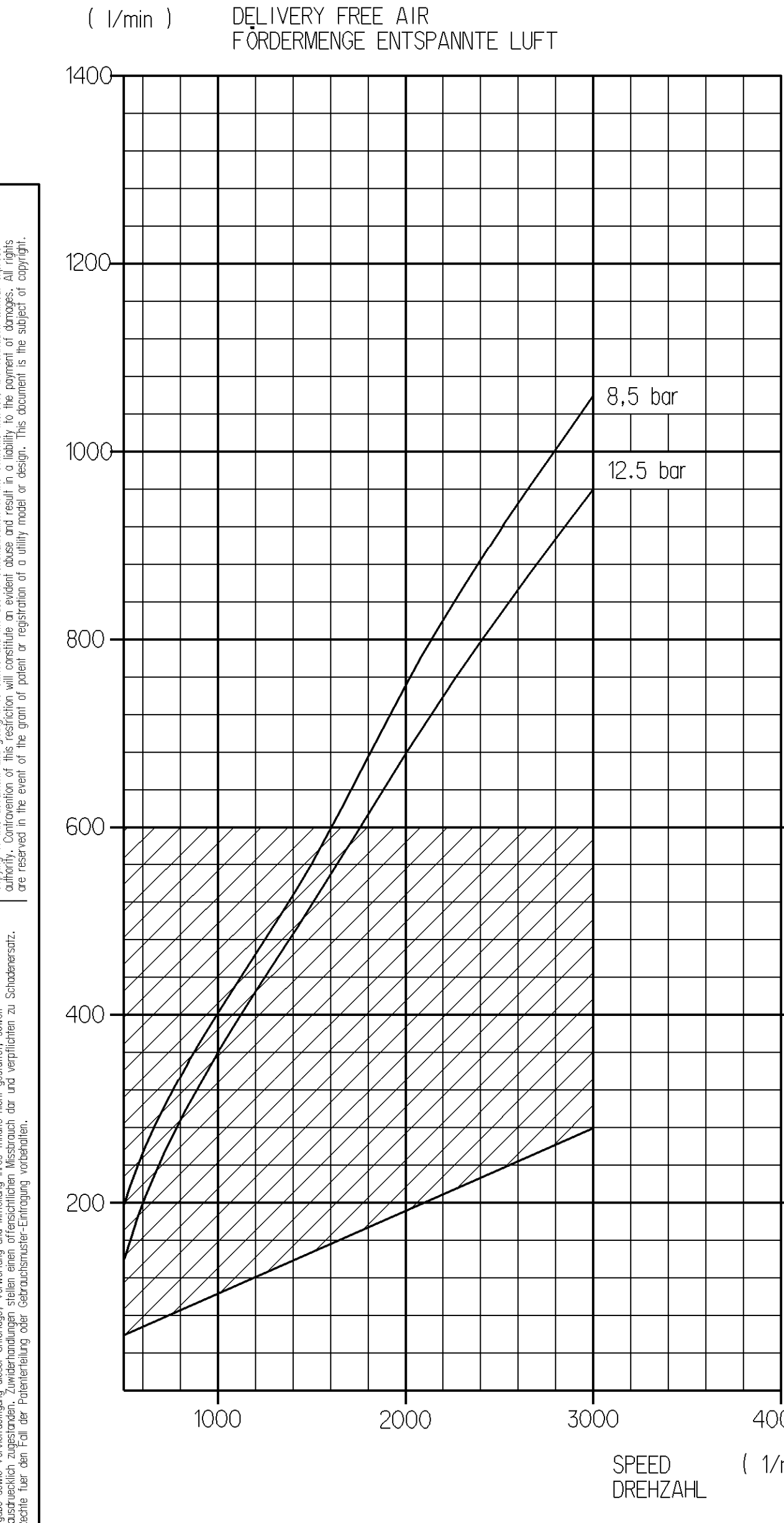
MAX. PRESSURE (TEMPORARILY MAX. 4 SEC.) : p^{*} = 16 bar **
 MAX. DRUCK (ZEITWEISE MAX. 4 SEC.) : p^{*} = 16 bar **

** MEASURING POINT: DISCHARGE PORT
 ** MESSPUNKT: DRÜCKANSCHLUSS

MAX. PERMISSIBLE TILT DURING CONTINUOUS WORKING
 MAX. ZULAESSIGE NEIGUNG IM DAUERBETRIEB



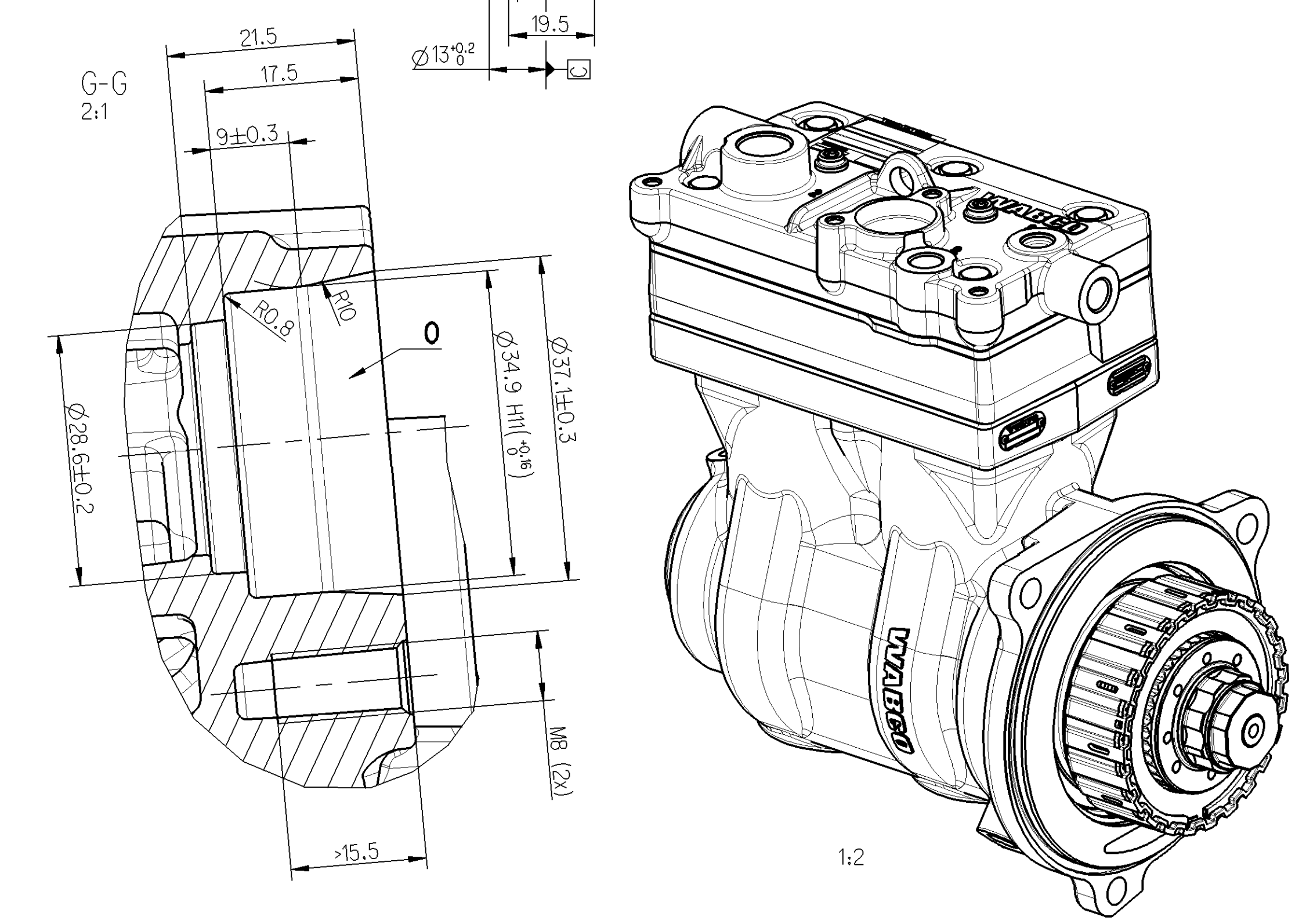
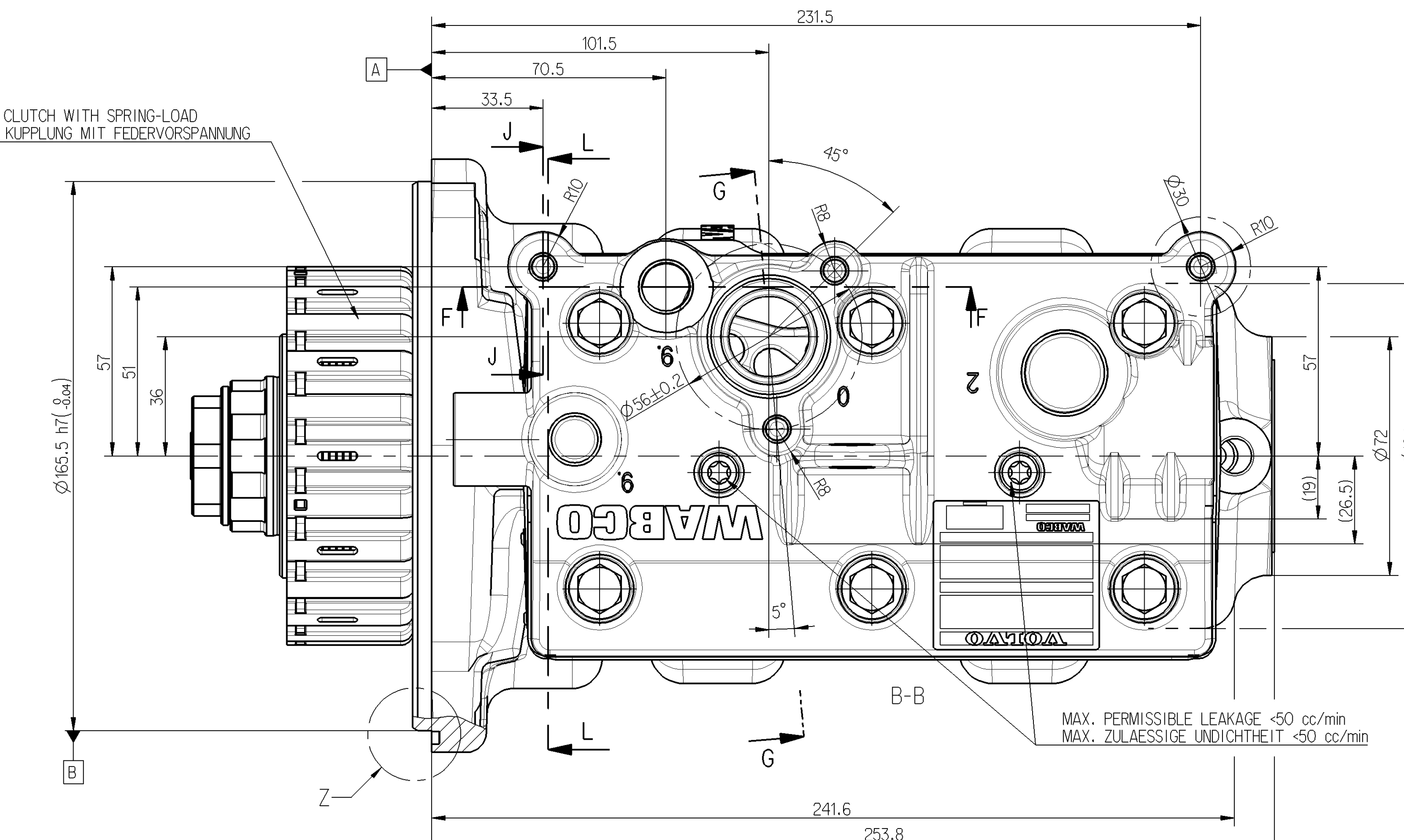
- 0 SUCTION PORT SAUGANSCHLUSS
 - 2 DISCHARGE PORT DRÜCKANSCHLUSS M ≤ 150 Nm
 - 8.1 OIL SUPPLY DRÜCKÖLANSCHLUSS M ≤ 25 Nm
 - 8.2 OIL DRAIN ÖLDRUCKLAUF
 - 9 COOLANT CONNECTION KÜHLMITTELANSCHLUSS M ≤ 35 Nm
 - 4 CLUTCH CONTROL PORT M ≤ 25 Nm STEUERANSCHLUSS DER KUPPLUNG
- CLUTCH ACTUATION PRESSURE: 5 bar
 PRESSURE BUILD-UP TIME: 0.5 -> 5 bar < 0.8 sec
 VENTING TIME: 5 -> 0.5 bar < 0.8 sec
- KUPPLUNGSBETÄTIGUNGSDRUCK: 5 bar
 DRÜCKAUFBAUZEIT: 0.5 -> 5 bar < 0.8 sek
 ENTLÜFTUNGSZEIT: 5 -> 0.5 bar < 0.8 sek



--- OFF LOAD LEERLAUF
 A) COMBINED UNLOADER DRÜCKREGLER
 B) CLUTCH OPERATED (OILTEMPERATURE 100 °C ; OILPRESSURE 4 bar)
 KUPPLUNGSBETRIEBEN (ÖLTEMPERATUR 100 °C ; ÖLDRUCK 4 bar)

(OFF LOAD TEST-NO. K60/12 ; ON LOAD TEST-NO. K17/13)

WARNING: CLUTCH WITH SPRING-LOAD
 WARNUNG: KUPPLUNG MIT FEDERVORSPANNUNG



WABCO-NUMBER WABCO-NUMMER	CUSTOMER-NUMBER KUNDEN-NUMMER	BRANDING OF CUSTOMER NAME PLATE + BARCODE LABEL FIRMENZEICHEN DES KUNDENTYPENSCHILDES + BARCODE AUFLIKLEBER	REPLACEMENT FOR ERSATZ FÜR (CUSTOMER-NUMBER) (KUNDENNUMMER)
912 512 030 0	22017920	VOLVO	912 512 028 0 (21984259)
912 514 010 0	22169888	RENAULT TRUCKS	912 514 008 0 (21986918)
912 542 008 0	22258718	MACK	912 542 006 0 (21646147)
912 551 007 0	22169889	UD	912 551 005 0 (21839532)

General Specification	General Specification	General Specification	General Specification
Part No. 912 512 030 0	Part No. 912 512 030 0	Part No. 912 512 030 0	Part No. 912 512 030 0
Revision 1	Revision 1	Revision 1	Revision 1
Release Date 2013-07-15	Release Date 2013-07-15	Release Date 2013-07-15	Release Date 2013-07-15
Drawn 1 To 7	Drawn 1 To 7	Drawn 1 To 7	Drawn 1 To 7
Checked	Checked	Checked	Checked
Approved	Approved	Approved	Approved
Material No.	Material No.	Material No.	Material No.
Scale 1:1	Scale 1:1	Scale 1:1	Scale 1:1
Sheet 1/1	Sheet 1/1	Sheet 1/1	Sheet 1/1

WABCO
 TWIN CYLINDER COMPRESSOR
 ZWEIFLINDLER KOMPRESSOR

912 512 030 0

053 DE 1/1

912 512 028 0