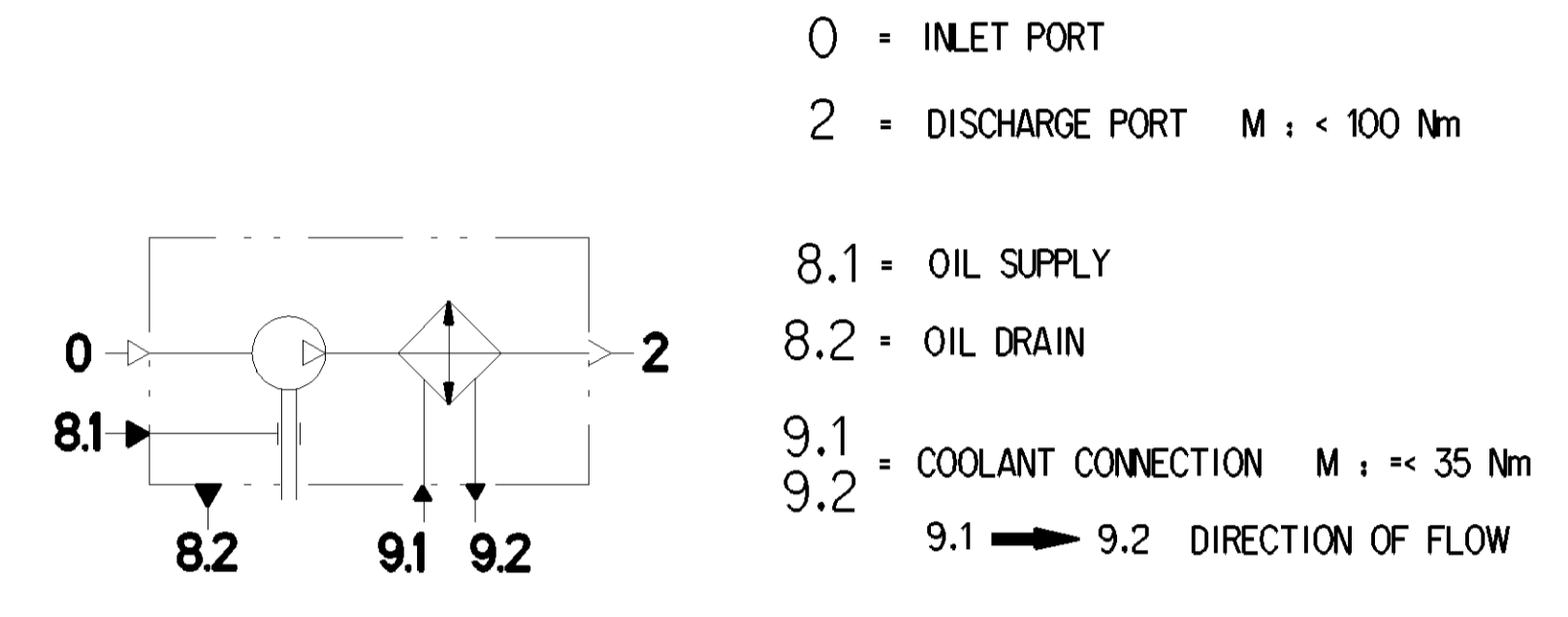
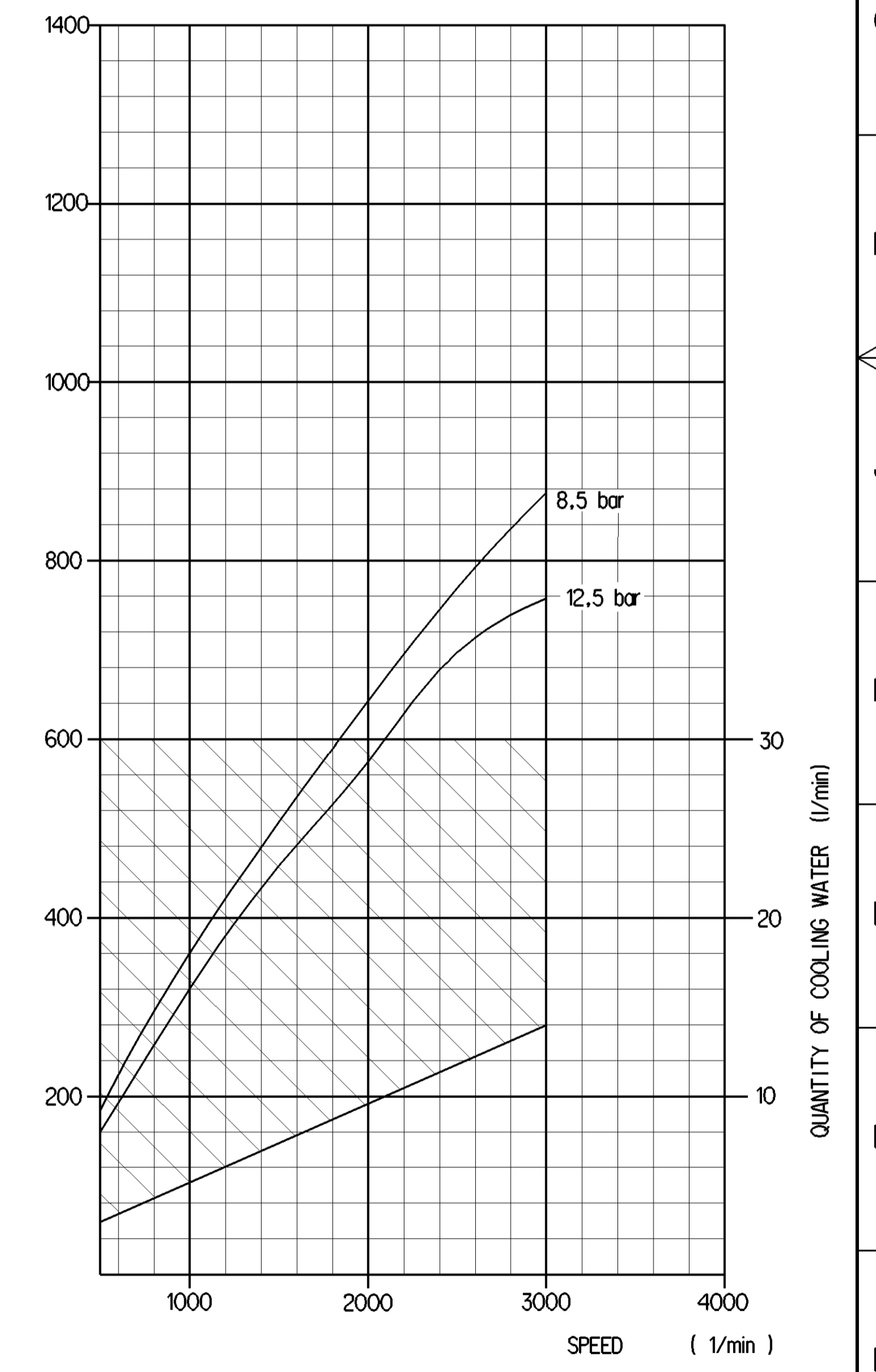


WORKING MEDIUMAIR
 COOLANTWATER WITH ANTIFREEZE
 BORE \varnothing 85 mm
 STROKE56 mm
 SWEPT VOLUME636 cm³
 MAX WORKING SPEED $\eta_{max} = 3000 \text{ min}^{-1}$
 OVERSPEED (TEMPORARILY < 4 Sec.) $\eta_{se} = 1.3 \times \eta_{max}$
 MAX. WORKING PRESSURE (SYSTEM PRESSURE) $p_g = 12.5 \text{ bar}$
 MAX. PRESSURE AT DISCHARGE PORT $p_g = 14 \text{ bar}$ ①
 MAX. PRESSURE AT DISCHARGE PORT (MAX. < 4 SEC.) $p_g = 16 \text{ bar}$ ①

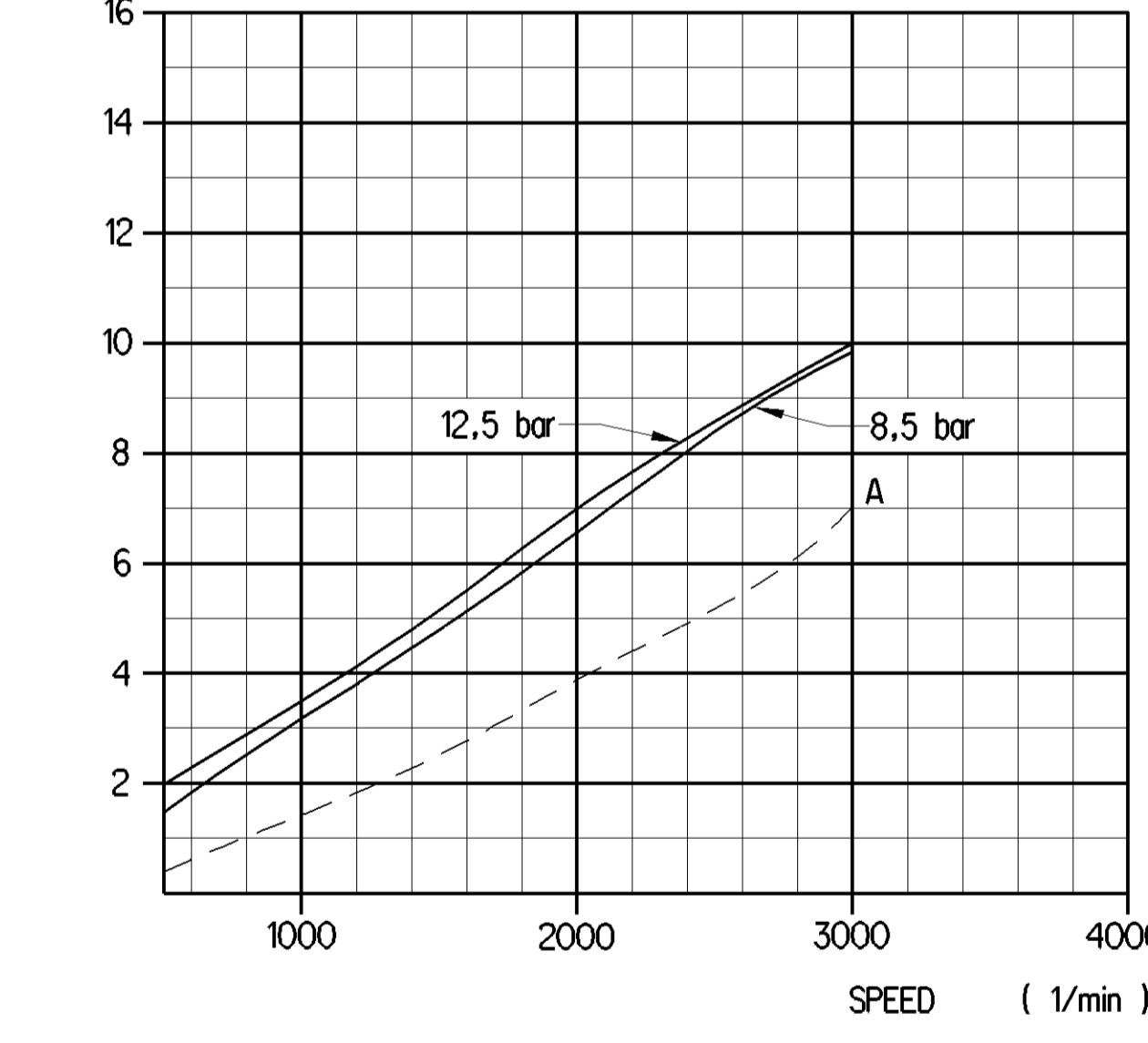
① MEASURING POINTDISCHARGE PORT
 LUBRICATIONLUBRICATION SUPPLIED FROM ENGINE
 FREE FROM ASBESTOS
 (...) AUXILIARY DIMENSION
 PORTS PROTECTED
 ② MAX. THREAD ENGAGEMENT
 END PLAY OF CRANKSHAFT: 0.1...0.4 mm



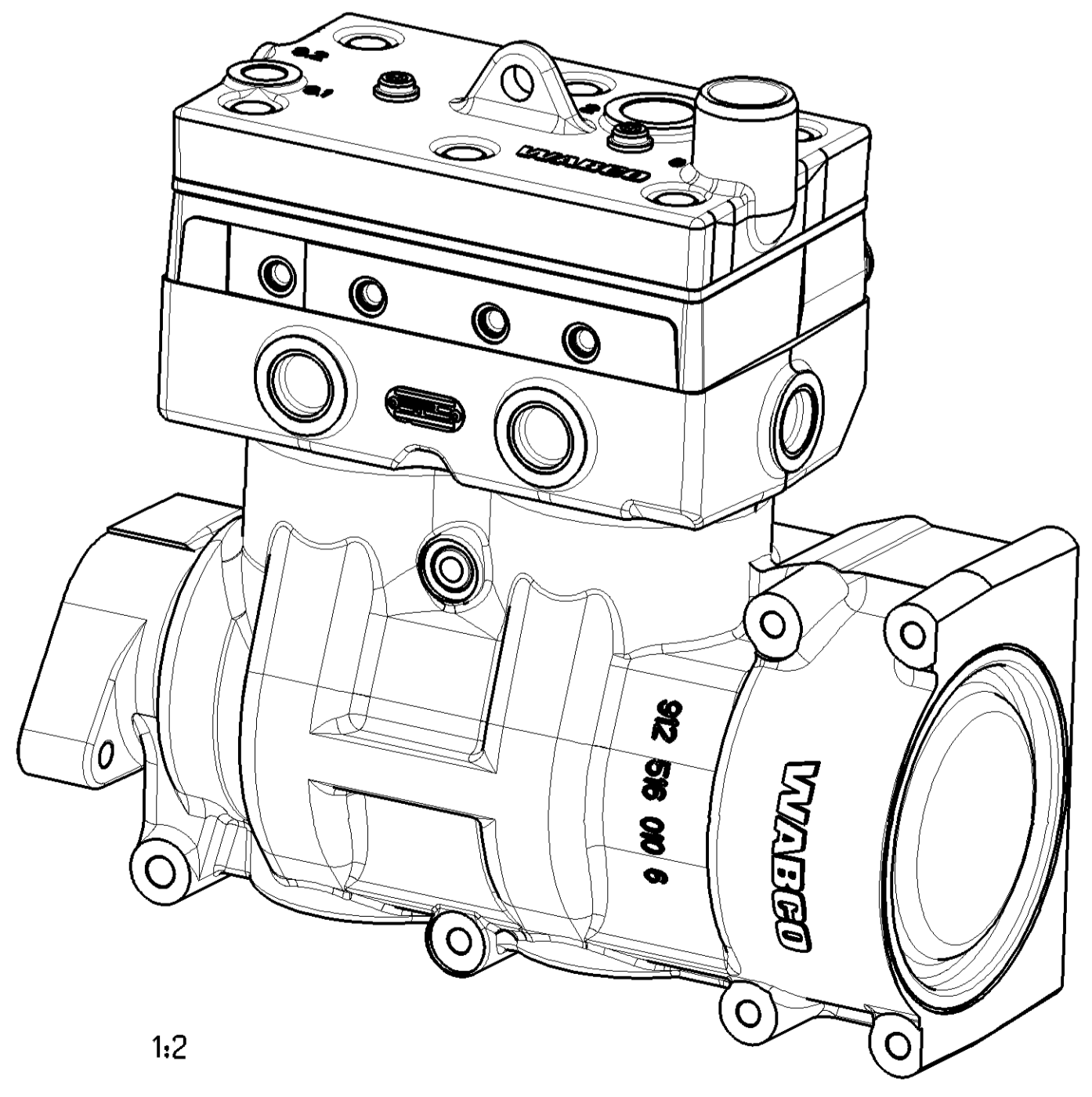
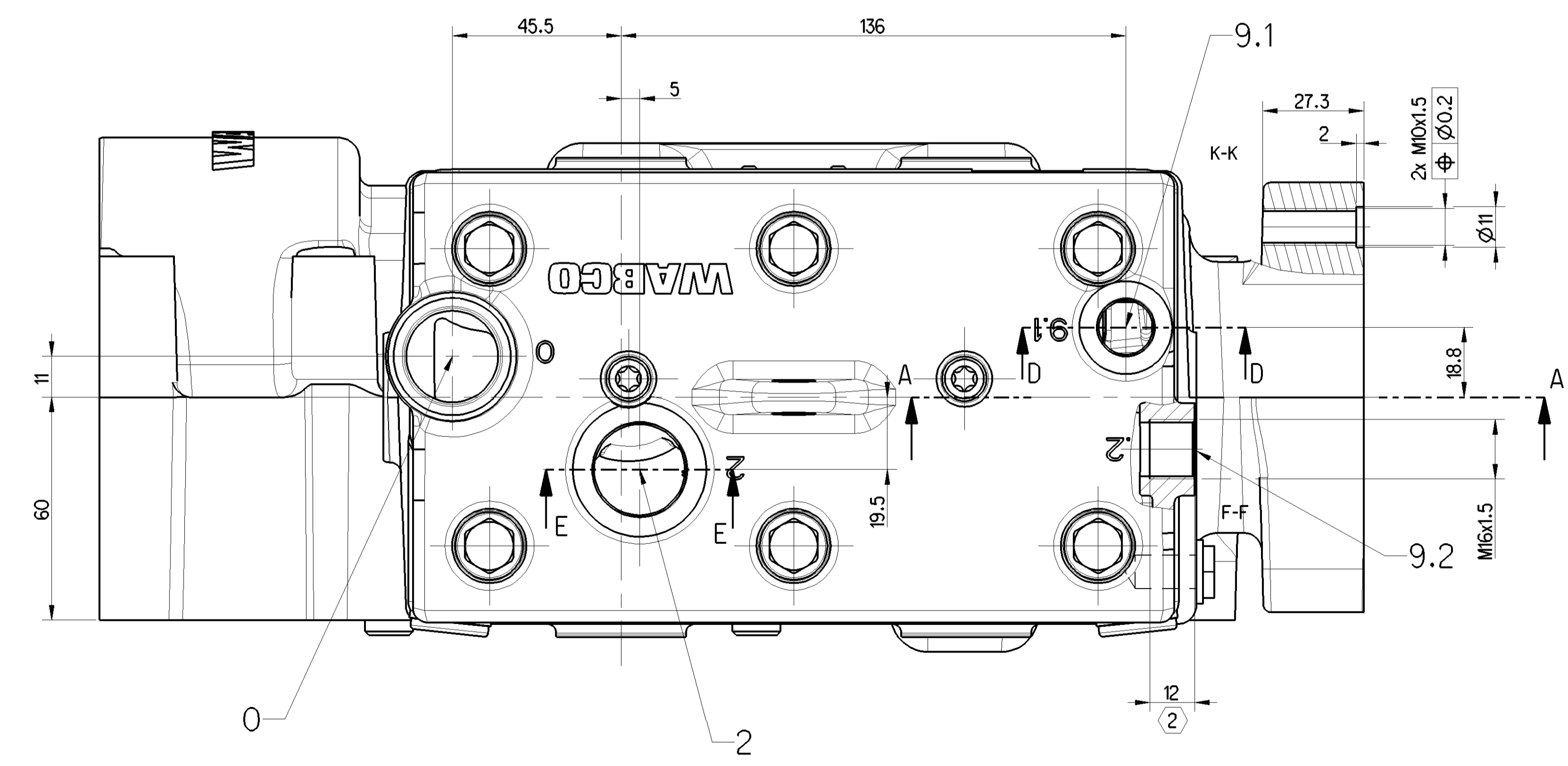
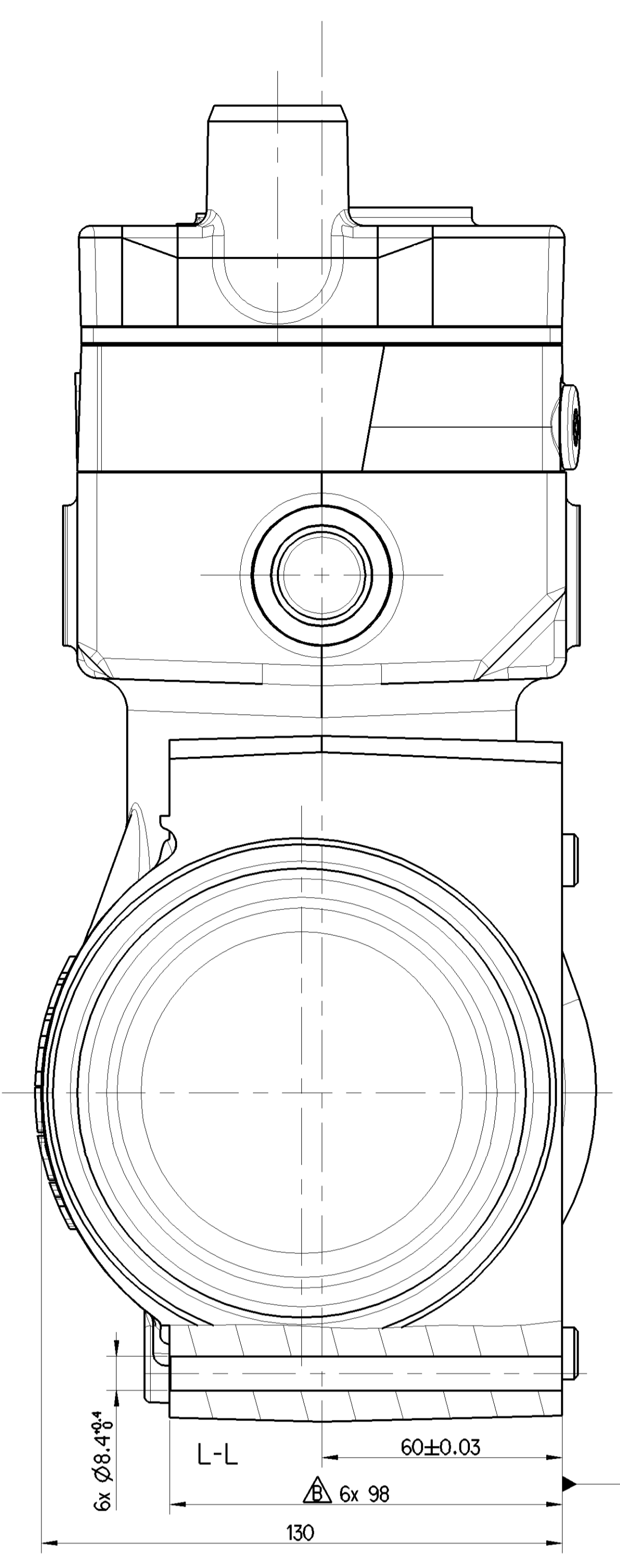
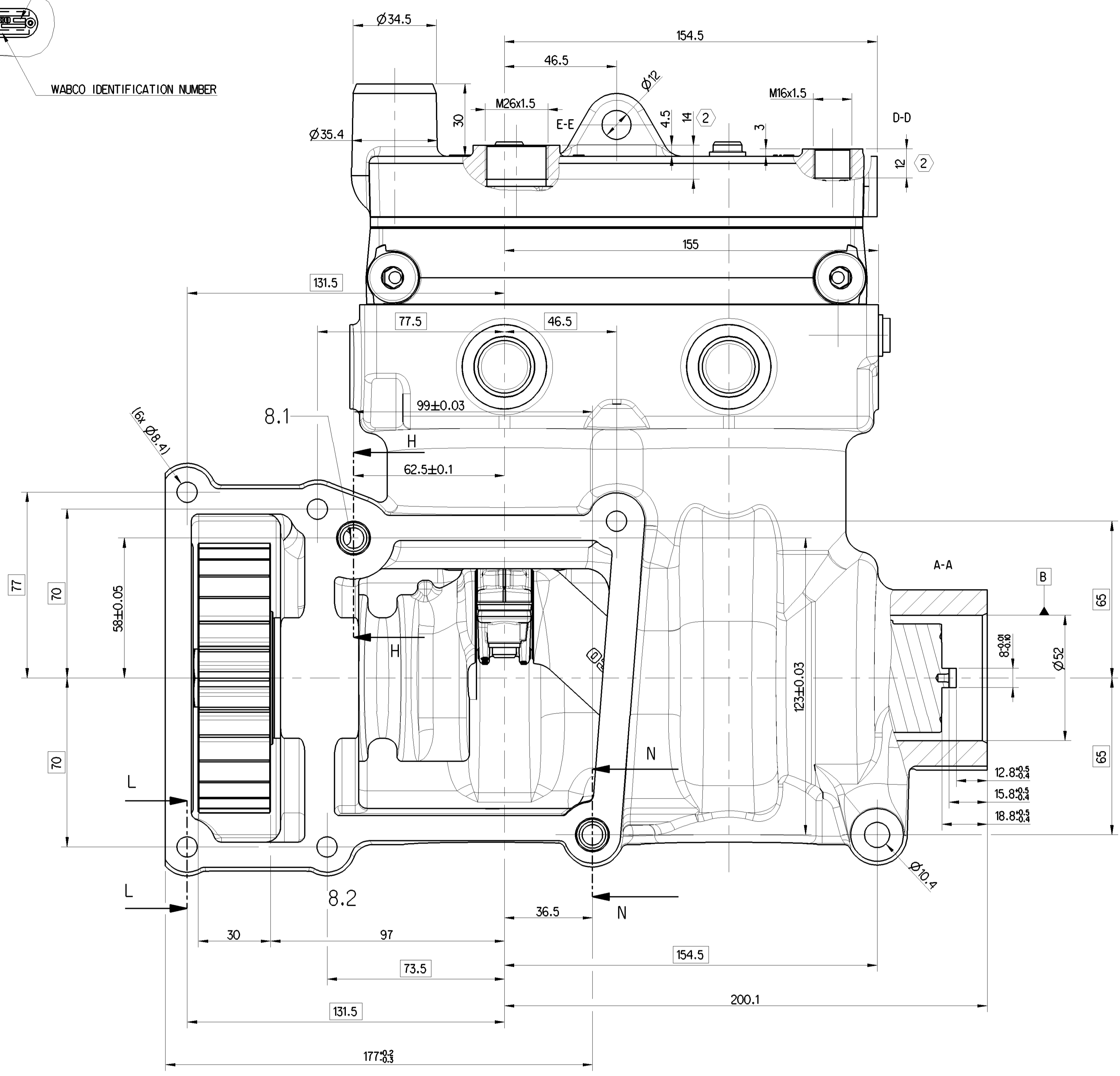
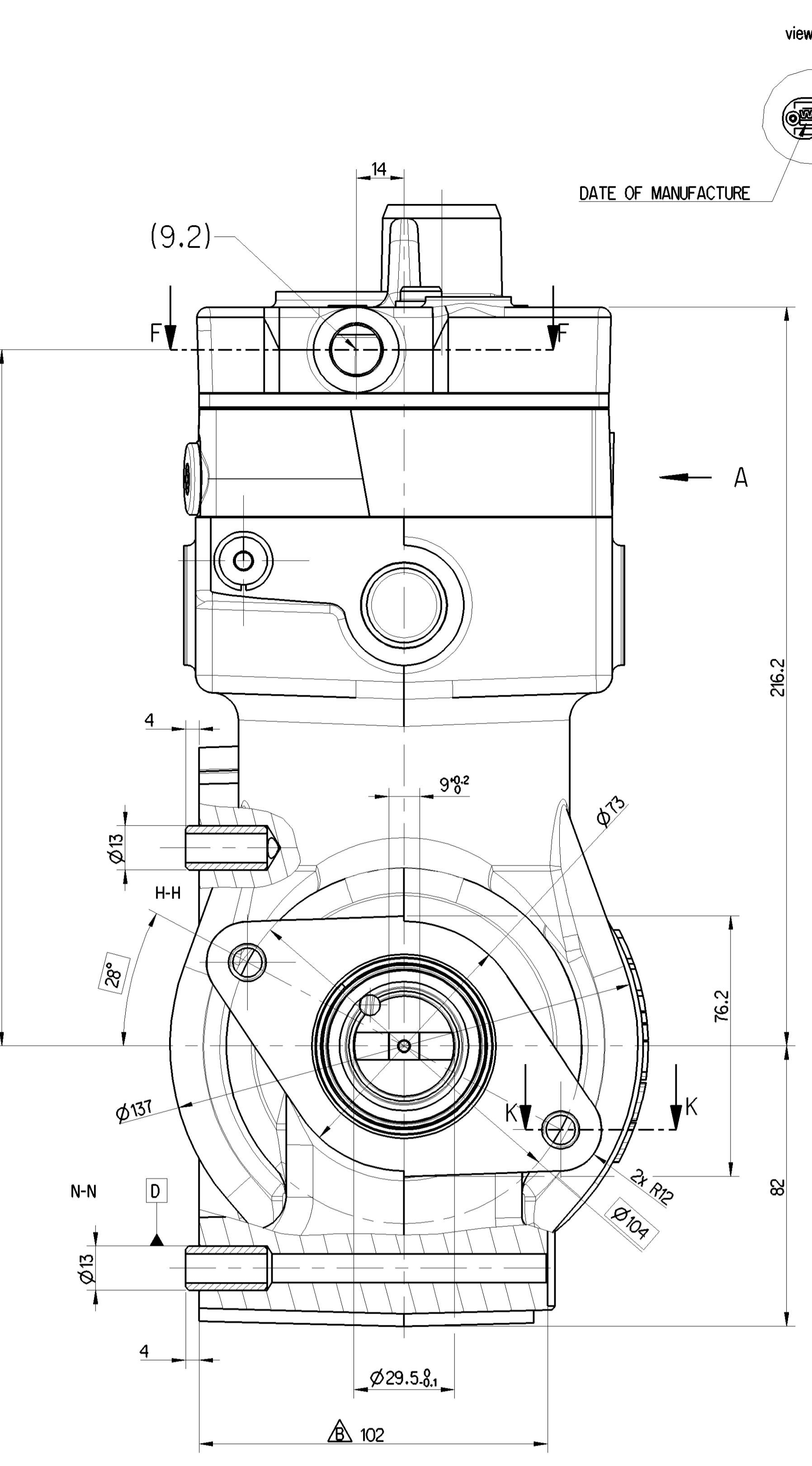
(l/min) AIR DELIVERY : FREE AIR (OPEN INTAKE PORT) ±5%



(kW) POWER CONSUMPTION(OPEN INTAKE PORT) ±5%
 CONDITION: BRAND NEW



(Perf.-Test N. K0820)



General Specification: ISO 8015, ISO 534-1, Size ISO 14405 LP		Copyright WABCO		WABCO	
Further Technical Data: 912 516 002 0		Date: 2022-06-30		TWIN CYLINDER COMPRESSOR	
Doc. Code: 020		Sheet: 1 To 8		Revision: 005	
General Tolerances: ISO 2011		2022-07-01		EN 1/1	
Range of nominal dimensions in mm		Dimension in mm		Date of first issue: 2020-05-05	
Class	11 ± 0.05	12 ± 0.05	13 ± 0.05	14 ± 0.05	15 ± 0.05
Class	16 ± 0.05	17 ± 0.05	18 ± 0.05	19 ± 0.05	20 ± 0.05
Class	21 ± 0.05	22 ± 0.05	23 ± 0.05	24 ± 0.05	25 ± 0.05
Class	26 ± 0.05	27 ± 0.05	28 ± 0.05	29 ± 0.05	30 ± 0.05
Class	31 ± 0.05	32 ± 0.05	33 ± 0.05	34 ± 0.05	35 ± 0.05
Class	36 ± 0.05	37 ± 0.05	38 ± 0.05	39 ± 0.05	40 ± 0.05
Class	41 ± 0.05	42 ± 0.05	43 ± 0.05	44 ± 0.05	45 ± 0.05
Class	46 ± 0.05	47 ± 0.05	48 ± 0.05	49 ± 0.05	50 ± 0.05
Class	51 ± 0.05	52 ± 0.05	53 ± 0.05	54 ± 0.05	55 ± 0.05
Class	56 ± 0.05	57 ± 0.05	58 ± 0.05	59 ± 0.05	60 ± 0.05
Class	61 ± 0.05	62 ± 0.05	63 ± 0.05	64 ± 0.05	65 ± 0.05
Class	66 ± 0.05	67 ± 0.05	68 ± 0.05	69 ± 0.05	70 ± 0.05
Class	71 ± 0.05	72 ± 0.05	73 ± 0.05	74 ± 0.05	75 ± 0.05
Class	76 ± 0.05	77 ± 0.05	78 ± 0.05	79 ± 0.05	80 ± 0.05
Class	81 ± 0.05	82 ± 0.05	83 ± 0.05	84 ± 0.05	85 ± 0.05
Class	86 ± 0.05	87 ± 0.05	88 ± 0.05	89 ± 0.05	90 ± 0.05
Class	91 ± 0.05	92 ± 0.05	93 ± 0.05	94 ± 0.05	95 ± 0.05
Class	96 ± 0.05	97 ± 0.05	98 ± 0.05	99 ± 0.05	100 ± 0.05
Class	101 ± 0.05	102 ± 0.05	103 ± 0.05	104 ± 0.05	105 ± 0.05
Class	106 ± 0.05	107 ± 0.05	108 ± 0.05	109 ± 0.05	110 ± 0.05
Class	111 ± 0.05	112 ± 0.05	113 ± 0.05	114 ± 0.05	115 ± 0.05
Class	116 ± 0.05	117 ± 0.05	118 ± 0.05	119 ± 0.05	120 ± 0.05
Class	121 ± 0.05	122 ± 0.05	123 ± 0.05	124 ± 0.05	125 ± 0.05
Class	126 ± 0.05	127 ± 0.05	128 ± 0.05	129 ± 0.05	130 ± 0.05
Class	131 ± 0.05	132 ± 0.05	133 ± 0.05	134 ± 0.05	135 ± 0.05
Class	136 ± 0.05	137 ± 0.05	138 ± 0.05	139 ± 0.05	140 ± 0.05
Class	141 ± 0.05	142 ± 0.05	143 ± 0.05	144 ± 0.05	145 ± 0.05
Class	146 ± 0.05	147 ± 0.05	148 ± 0.05	149 ± 0.05	150 ± 0.05
Class	151 ± 0.05	152 ± 0.05	153 ± 0.05	154 ± 0.05	155 ± 0.05
Class	156 ± 0.05	157 ± 0.05	158 ± 0.05	159 ± 0.05	160 ± 0.05
Class	161 ± 0.05	162 ± 0.05	163 ± 0.05	164 ± 0.05	165 ± 0.05
Class	166 ± 0.05	167 ± 0.05	168 ± 0.05	169 ± 0.05	170 ± 0.05
Class	171 ± 0.05	172 ± 0.05	173 ± 0.05	174 ± 0.05	175 ± 0.05
Class	176 ± 0.05	177 ± 0.05	178 ± 0.05	179 ± 0.05	180 ± 0.05
Class	181 ± 0.05	182 ± 0.05	183 ± 0.05	184 ± 0.05	185 ± 0.05
Class	186 ± 0.05	187 ± 0.05	188 ± 0.05	189 ± 0.05	190 ± 0.05
Class	191 ± 0.05	192 ± 0.05	193 ± 0.05	194 ± 0.05	195 ± 0.05
Class	196 ± 0.05	197 ± 0.05	198 ± 0.05	199 ± 0.05	200 ± 0.05