

CAUTION
VORSICHT
PRUDENCE
ATTENZIONE

DUST PLUG
DUST PLUG
BOUCHON DE POUSSIERE
SPINA POLVERE

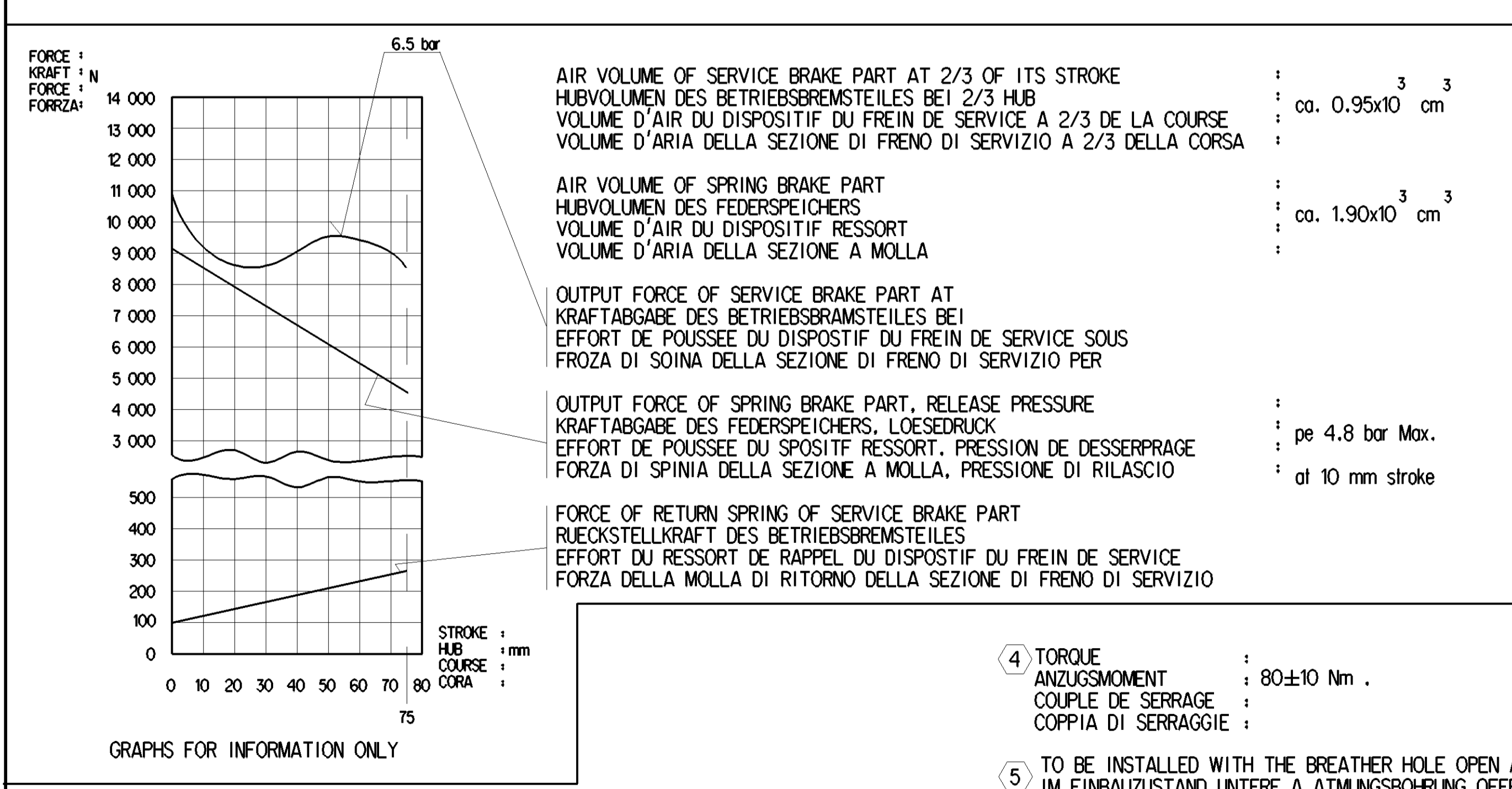
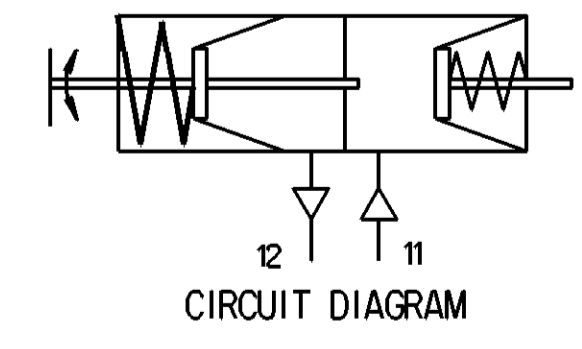
AFTER REMOVAL OF CAGING/ RELEASE BOLT ENSURE THE HOLE IS ALWAYS COVERED WITH DUST PLUG
MAY CAUSE PREMATURE FAILURE OF POWER SPRING AND POTENTIAL LOSS OF PARKING BRAKE FORCE

1) NACH ENTWAHNE KÄFIG/LOSBOLZEN SICHERSTELLEN, DASS DIE BOHRUNG IMMER MIT STAUBSTOFFEN ABGEDECKT IST
APRES LE RETRAIT DE CAGING/BOLLEON DE LIBERATION ASSUREZ-VOUS QUE LE TROU EST TOUJOURS COUVERT DE BOUCHON DE POUSSIERE
DOPO LA RIMOZIONE DEL BILLONE DI GABBIA/RILASCIO ASSICURARSI CHE IL FORO E SEMPRE COPERTO DA SPINA DI POLVERE

FAILURE TO INSTALL THE DUST PLUG IN THE CYLINDER HOLE
MAY CAUSE PREMATURE FAILURE OF POWER SPRING AND POTENTIAL LOSS OF PARKING BRAKE FORCE

2) WENN DER STAUBSTOFFEN NICHT IN DIE ZYLINDERBOHRUNG EINBAUT WIRD, KANN ES ZU VORZEITIGEM AUSFALL DER KRAFTFEEDER UND POTENTIALLEN VERLUST DER FESTSTELLEREMSKRAFT KOMMEN
DÉFAUT D'INSTALLER LE BOUCHON DE POUSSIERE DANS LE TROU DU CYLINDRE PEUT CAUSER UNE DÉFAILLANCE PRÉMATURÉE DU RESSORT DE PUISSANCE ET UNE PERTE POTENTIELLE DE LA FORCE DE FREIN DE STATIONNEMENT

MANCATA INSTALLAZIONE DELLA SPINA DELLA POLVERE NEL FORO DEL CILINDRO PUÒ CAUSARE UN GUASTO PREMATURO DELLA MOLLA DI ALIMENTAZIONE E POTENZIALE PERDITA DELLA FORZA DEL FRENO DI STAZIONAMENTO



AIR VOLUME OF SERVICE BRAKE PART AT 2/3 OF ITS STROKE
HUBVOLUMEN DES BETRIEBSBREMSSTEUERTEILES BEI 2/3 HUB
VOLUME D'AIR DU DISPOSITIF DU FREIN DE SERVICE A 2/3 DE LA COURSE
VOLUME D'ARIA DELLA SEZIONE DI FRENO DI SERVIZIO A 2/3 DELLA CORSA : ca. 0.95x10³ cm³

AIR VOLUME OF SPRING BRAKE PART
HUBVOLUMEN DES FEDERSPEICHERS
VOLUME D'AIR DU DISPOSITIF RESSORT
VOLUME D'ARIA DELLA SEZIONE A MOLLA : ca. 1.90x10³ cm³

OUTPUT FORCE OF SERVICE BRAKE PART AT
KRAFTABGABE DES BETRIEBSBREMSSTEUERTEILES BEI
EFFORT DE POUSSEE DU DISPOSITIF DU FREIN DE SERVICE SOUS
FORZA DI SOINA DELLA SEZIONE DI FRENO DI SERVIZIO PER : pe 4.8 bar Max.

OUTPUT FORCE OF SPRING BRAKE PART, RELEASE PRESSURE
KRAFTABGABE DES FEDERSPEICHERS, LOESEDRUCK
EFFORT DE POUSSEE DU DISPOSITIF RESSORT, PRESSION DE DESSERRAGE
FORZA DI SPINIA DELLA SEZIONE A MOLLA, PRESSIONE DI RILASCIO : al 10 mm stroke

FORCE OF RETURN SPRING OF SERVICE BRAKE PART
RUECKSTELLKRAFT DES BETRIEBSBREMSSTEUERTEILES
EFFORT DU RESSORT DE RAFFEL DU DISPOSITIF DU FREIN DE SERVICE
FORZA DELLA MOLLA DI RITORNO DELLA SEZIONE DI FRENO DI SERVIZIO : al 10 mm stroke

PORT : SERVICE BRAKING SYSTEM, WORKING PRESSURE
ANSCHLUSS : 11 BETRIEBSBREMSANLAGE, BETRIEBSDRUCK : Pe max. = 10.2 bar
ORIFICE : DISPOSITIF DE FREINAGE DE SERVICE, PRESSION D'UTILISATION
ORIFIZIO : DISPOSITIVO DI FRENATURA DI SERVIZIO, PRESSIONE DI ESERCIZIO : (TEMPORARILY : Pe max. = 13 bar)
(KURZZEITIG : Pe max. = 13 bar)
(DE COURTE DUREE : Pe max. = 13 bar)
(BREVE TEMPO SOLO : Pe max. = 13 bar)

PORT : SPRING BRAKE CYLINDER, WORKING PRESSURE
ANSCHLUSS : 12 FEDERSPEICHERZYLINDER, BETRIEBSDRUCK : Pe max. = 8.5 bar
ORIFICE : CYLINDRE A RESSORT, PRESSION D'UTILISATION
ORIFIZIO : CILINDRO A MOLLA, PRESSIONE DI ESERCIZIO : (TEMPORARILY : Pe max. = 11 bar)
(KURZZEITIG : Pe max. = 11 bar)
(DE COURTE DUREE : Pe max. = 11 bar)
(BREVE TEMPO SOLO : Pe max. = 11 bar)

11 STROKE : 75 mm min.
HUB : 75 mm min.
COURSE : 75 mm min.
CORSA : 75 mm min.

12 STROKE : 75 mm min.
HUB : 75 mm min.
COURSE : 75 mm min.
CORSA : 75 mm min.

MEDIUM : AIR
MEDIUM : LUFT
FLUIDE : AIR
FLUIDO : ARIA

NOMINAL DIAMETER : MIN 9.0 mm
NENNWEITE : MIN 9.0 mm
DIAMETRE NOMINAL : MIN 9.0 mm
DIAMETRO NOMINALE : MIN 9.0 mm

WIDTH ACROSS FLATS : SW
SCHLUESSELWEITE : SW
SURPLATS : SW
LAGHEZZA IN CHIAVE : SW

THERMAL RANGE OF APPLICATION : -40°C...+80°C
THERMISCHER ANWENDUNGSBEREICH : -40°C...+80°C
BAMME D'APPLICATION THERMIQUE : -40°C...+80°C
CAMPO DI APPLICAZIONE TERMICA : -40°C...+80°C

1 OPEN BREATHER HOLE
OFFEN ATMUNGSBOHRUNG
VERT TROU RENIFLEUR
APERTO FORO RESPIRATORE

2 TORQUE : 34 Nm max.
ANZUGSMOMENT : max. 25 Nm
COUPLE DE SERRAGE : max. 25 Nm
COPPIA DI SERRAGGIE : max. 25 Nm

3 DEFLECTION : 6° max AT STROKE
AUSLEIUNG : 6° max BEI HUB
A COURSE : 6° max A COURSE
EVAZIONI : 6° max A COURSA

4 TORQUE : 80±10 Nm
ANZUGSMOMENT : 80±10 Nm
COUPLE DE SERRAGE : 80±10 Nm
COPPIA DI SERRAGGIE : 80±10 Nm

5 TO BE INSTALLED WITH THE BREATHER HOLE OPEN AT BOTTOM MOST POSITION
IM EINBAUZUSTAND UNTERE A ATMUNGSBOHRUNG OFFEN
A MONTER AVEC LE RENIFLEUR INFERIEUR OUVERT
INSTALLAZIONE CON IL FORO DI SFIOATINFERIORE APERTO

6 CONDITION AS SUPPLIED : SPRING BRAKE RELEASED
ANLIEFERUNGSZUSTAND : FEDERBREMS GELÖST
ETAT DE LIVRAISON : PUBLIE FREIN DE PRINTEMPS
STATO DI FORNITURA : FRENO A MOLLA RILASCIATO

7 TORQUE : 20 Nm
ANZUGSMOMENT : 20 Nm
COUPLE DE SERRAGE : 20 Nm
COPPIA DI SERRAGGIE : 20 Nm

8 ADMISSIBLE INSTALLATION POSITION
ZULASSIGE EINBAULAGE
POSITION D'INSTALLATION ADMISE
POSIZIONE DI MONTAGGIO AMMESSA

9 RELEASED POSITION
LOESESTELLUNG
POSITION DE DESSERRAGE
POSIZIONE DI RILASCIO

10 TORQUE : 22.5 Nm
ANZUGSMOMENT : 22.5 Nm
COUPLE DE SERRAGE : 22.5 Nm
COPPIA DI SERRAGGIE : 22.5 Nm

11 FIXTURE OF RELEASE BOLT TORQUE
LOSESCHRAUBENHALTER
SUPPORT DE LA VIS DE DESSERRAGE : 22.5 ±2.5 Nm
ANZUGSMOMENT : 22.5 ±2.5 Nm
COUPLE DE SERRAGE : 22.5 ±2.5 Nm
COPPIA DI SERRAGGIE : 22.5 ±2.5 Nm

12 DRAWN OUT OF PLANE
AUS DER EBENE GEZOGEN
TIRÉ HORS DU PLAN
TIRATO FUORI DAL PIANO

General Specification ISO 8015, ISO 1146, ISO 14405 LP		Copyright WABCO		WABCO	
Further Technical Data: 925 376 051 0		Date: 2023-01-06		Sheet: 1 To 6	
Doc. Code: 020		Year: Anon		Revision: 005 ML 1/1	
General Tolerances: ISO 2011		2023-01-06		2023-01-06	
Range of nominal dimensions in mm		Dimension in mm		Date of first issue: 2018-09-27	
Class	11 ±0.05	12 ±0.05	13 ±0.05	14 ±0.05	15 ±0.05
16	±0.05	17	±0.05	18	±0.05
19	±0.05	20	±0.05	21	±0.05
22	±0.05	23	±0.05	24	±0.05
25	±0.05	26	±0.05	27	±0.05
28	±0.05	29	±0.05	30	±0.05
31	±0.05	32	±0.05	33	±0.05
34	±0.05	35	±0.05	36	±0.05
37	±0.05	38	±0.05	39	±0.05
40	±0.05	41	±0.05	42	±0.05
43	±0.05	44	±0.05	45	±0.05
46	±0.05	47	±0.05	48	±0.05
49	±0.05	50	±0.05	51	±0.05
52	±0.05	53	±0.05	54	±0.05
55	±0.05	56	±0.05	57	±0.05
58	±0.05	59	±0.05	60	±0.05
61	±0.05	62	±0.05	63	±0.05
64	±0.05	65	±0.05	66	±0.05
67	±0.05	68	±0.05	69	±0.05
70	±0.05	71	±0.05	72	±0.05
73	±0.05	74	±0.05	75	±0.05
76	±0.05	77	±0.05	78	±0.05
79	±0.05	80	±0.05	81	±0.05
82	±0.05	83	±0.05	84	±0.05
85	±0.05	86	±0.05	87	±0.05
88	±0.05	89	±0.05	90	±0.05
91	±0.05	92	±0.05	93	±0.05
94	±0.05	95	±0.05	96	±0.05
97	±0.05	98	±0.05	99	±0.05
100	±0.05	101	±0.05	102	±0.05
103	±0.05	104	±0.05	105	±0.05
106	±0.05	107	±0.05	108	±0.05
109	±0.05	110	±0.05	111	±0.05
112	±0.05	113	±0.05	114	±0.05
115	±0.05	116	±0.05	117	±0.05
118	±0.05	119	±0.05	120	±0.05
121	±0.05	122	±0.05	123	±0.05
124	±0.05	125	±0.05	126	±0.05
127	±0.05	128	±0.05	129	±0.05
130	±0.05	131	±0.05	132	±0.05
133	±0.05	134	±0.05	135	±0.05
136	±0.05	137	±0.05	138	±0.05
139	±0.05	140	±0.05	141	±0.05
142	±0.05	143	±0.05	144	±0.05
145	±0.05	146	±0.05	147	±0.05
148	±0.05	149	±0.05	150	±0.05
151	±0.05	152	±0.05	153	±0.05
154	±0.05	155	±0.05	156	±0.05
157	±0.05	158	±0.05	159	±0.05
160	±0.05	161	±0.05	162	±0.05
163	±0.05	164	±0.05	165	±0.05
166	±0.05	167	±0.05	168	±0.05
169	±0.05	170	±0.05	171	±0.05
172	±0.05	173	±0.05	174	±0.05
175	±0.05	176	±0.05	177	±0.05
178	±0.05	179	±0.05	180	±0.05
181	±0.05	182	±0.05	183	±0.05
184	±0.05	185	±0.05	186	±0.05
187	±0.05	188	±0.05	189	±0.05
190	±0.05	191	±0.05	192	±0.05
193	±0.05	194	±0.05	195	±0.05
196	±0.05	197	±0.05	198	±0.05
199	±0.05	200	±0.05	201	±0.05
202	±0.05	203	±0.05	204	±0.05
205	±0.05	206	±0.05	207	±0.05
208	±0.05	209	±0.05	210	±0.05
211	±0.05	212	±0.05	213	±0.05
214	±0.05	215	±0.05	216	±0.05
217	±0.05	218	±0.05	219	±0.05
220	±0.05	221	±0.05	222	±0.05
223	±0.05	224	±0.05	225	±0.05
226	±0.05	227	±0.05	228	±0.05
229	±0.05	230	±0.05	231	±0.05
232	±0.05	233	±0.05	234	±0.05
235	±0.05	236	±0.05	237	±0.05
238	±0.05	239	±0.05	240	±0.05
241	±0.05	242	±0.05	243	±0.05
244	±0.05	245	±0.05	246	±0.05
247	±0.05	248	±0.05	249	±0.05
250	±0.05	251	±0.05	252	±0.05
253	±0.05	254	±0.05	255	±0.05
256	±0.05	257	±0.05	258	±0.05
259	±0.05	260	±0.05	261	±0.05
262	±0.05	263	±0.05	264	±0.05
265	±0.05	266	±0.05	267	±0.05
268	±0.05	269	±0.05	270	±0.05
271	±0.05	272	±0.05	273	±0.05
274	±0.05	275	±0.05	276	±0.05
277	±0.05	278	±0.05	279	±0.05
280	±0.05	281	±0.05	282	±0.05
283	±0.05	284	±0.05	285	±0.05
286	±0.05	287	±0.05	288	±0.05
289	±0.05	290	±0.05	291	±0.05
292	±0.05	293	±0.05	294	±0.05
295	±0.05	296	±0.05	297	±0.05
298	±0.05	299	±0.05	300	±0.05