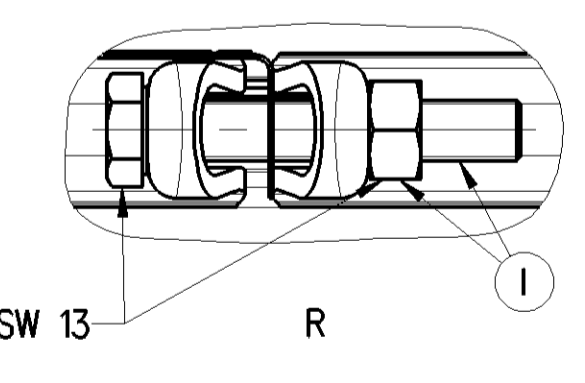


**AIR VOLUME OF SERVICE BRAKE PART AT 2/3 OF ITS STROKE**  
 HUBVOLUMEN DES BETRIEBSBREMSTEILES BEI 2/3 HUB  
 VOLUME D'AIR DU DISPOSITIF DU FREIN DE SERVICE A 2/3 DE LA COURSE  
 VOLUME D'ARIA DELLA SEZIONE DI FRENO DI SERVIZIO A 2/3 DELLA CORSA : ca. 1.25x10<sup>3</sup>cm<sup>3</sup>

**AIR VOLUME OF SPRING BRAKE PART**  
 HUBVOLUMEN DES FEDERSPEICHERS  
 VOLUME D'AIR DU DISPOSITIF RESSORT  
 VOLUME D'ARIA DELLA SEZIONE A MOLLA : ca. 1.90x10<sup>3</sup>cm<sup>3</sup>

**OUTPUT FORCE OF SERVICE BRAKE PART AT 2/3 STROKE**  
 KRAFTABGABE DES BETRIEBSBREMSTEILES BEI 2/3 HUB  
 EFFORT DE POUSSÉE DU DISPOSITIF DU FREIN DE SERVICE A 2/3 DE LA COURSE  
 FORZA DI SOINA DELLA SEZIONE DI FRENO DI SERVIZIO PER : pe 4.8 bar max at 10 mm stroke

**FORCE OF RETURN SPRING OF SERVICE BRAKE PART**  
 RUECKSTELLKRAFT DES BETRIEBSBREMSTEILES  
 EFFORT DU RESSORT DE RAPPEL DU DISPOSITIF DU FREIN DE SERVICE  
 FORZA DELLA MOLLA DI RITORNO DELLA SEZIONE DI FRENO DI SERVIZIO



SW 13  
 11 STROKE : HUB : 75 mm min.  
 COURSE : COURSE  
 12 STROKE : HUB : 75 mm min.  
 COURSE : COURSE

MEDIUM : AIR  
 MEDIUM : LUFT  
 FLUIDE : AIR  
 FLUIDO : ARIA

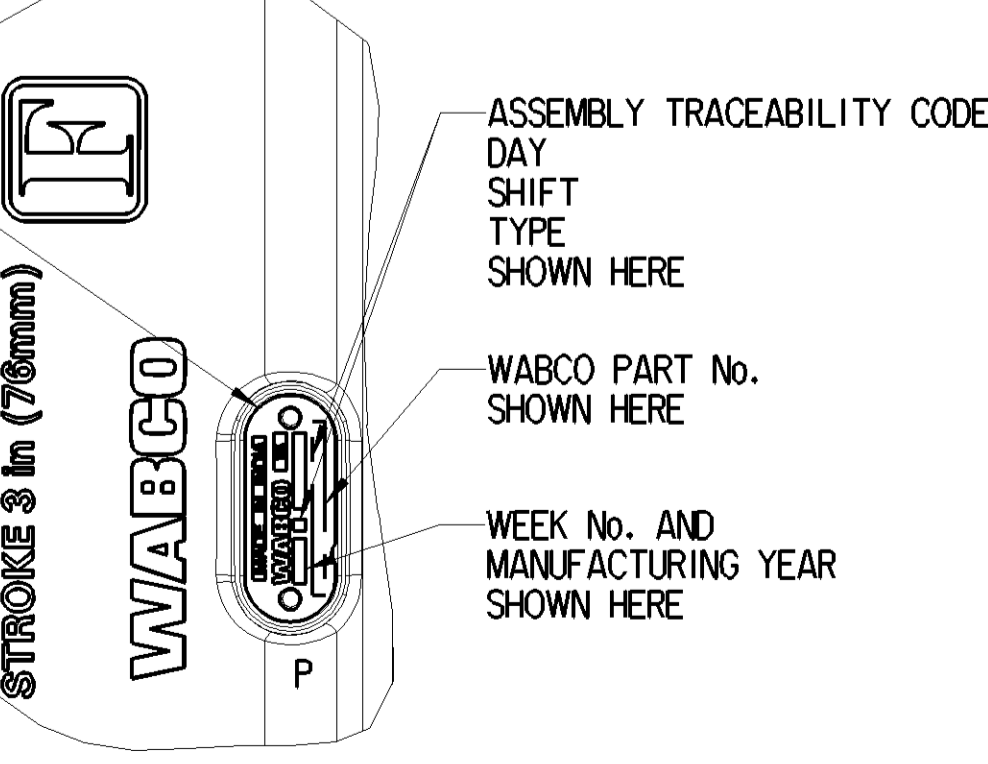
NOMINAL DIAMETER : NENNWEITE : MIN Ø9.0 mm  
 DIAMETRE NOMINALE : DIAMETRO NOMINALE :

WIDTH ACROSS FLATS : SCHLUSSELWEITE SURPLATS  
 LAGHEZZA IN CHIAVE

THERMAL RANGE OF APPLICATION : THERMISCHER ANWENDUNGSBEREICH : -40°C...+80°C  
 GAMME D'APPLICATION TERMICA : CAMPO DI APPLICAZIONE TERMICA :

PORT : SERVICE BRAKING SYSTEM, WORKING PRESSURE : Pe max. = 10.2 bar (TEMPORARILY : (KURZZEITIG : Pe max. = 13 bar)  
 ANSCHLUSS : 11 BETRIEBSBREMSEANLAGE, BETRIEBSDRUCK  
 ORIFICE : DISPOSITIF DE FREINAGE DE SERVICE, PRESSION D'UTILISATION (DE COURTE DUREE : (BREVE TEMPO SOLO)  
 ORIFIZIO : DISPOSITIVO DI FRENATURA DI SERVIZIO, PRESSIONE DI ESERCIZIO :

PORT : SPRING BRAKE CYLINDER, WORKING PRESSURE : Pe max. = 8.5 bar (TEMPORARILY : (KURZZEITIG : Pe max. = 11 bar)  
 ANSCHLUSS : 12 FEDERSPEICHERZYLINDER, BETRIEBSDRUCK  
 ORIFICE : CYLINDRE A RESSORT, PRESSION D'UTILISATION (DE COURTE DUREE : (BREVE TEMPO SOLO)  
 ORIFIZIO : CILINDRO A MOLLA, PRESSIONE DI ESERCIZIO :



NAME PLATE : BEZEICHNUNGSSCHILD / PLAQUE DE FICHE / TARCHETTA

ASSEMBLY TRACEABILITY CODE : DAY / SHIFT / TYPE / SHOWN HERE

WABCO PART No. : SHOWN HERE

WEEK No. AND MANUFACTURING YEAR : SHOWN HERE

- 4 TORQUE : ANZUGSMOMENT : 80±10 Nm  
 COUPLE DE SERRAGE : COPIA DI SERRAGGIE :
- 5 TO BE INSTALLED WITH THE BREATHER HOLE OPEN AT BOTTOM MOST POSITION  
 IM EINBAUZUSTAND UNTERE ATMUNGSBOHRUNG OFFEN  
 A MONTER AVEC LE RENIFLARD INFERIEUR OUVERT  
 INSTALLAZIONE CON IL FORO DI SFATIOINFERIORE APERTO
- 6 CONDITION AS SUPPLIED : SPRING BRAKE RELEASED  
 ANLIEFERUNGSZUSTAND : FEDERBREMSE GELOST  
 ETAT DE LIVRAISON : PUBLIE FREIN DE PRINTEMPS  
 STATO DI FORNITURA : FRENO A MOLLA RILASCIATO
- 7 TORQUE : ANZUGSMOMENT : max. 25 Nm  
 COUPLE DE SERRAGE : COPIA DI SERRAGGIE :
- 8 ADMISSIBLE INSTALLATION POSITION : ZULASSIGE EINBAUPLATZ  
 POSITION D'INSTALLATION ADMISE : POSIZIONE DI MONTAGGIO AMMESSA
- 9 RELEASED POSITION : LOESESTELLUNG  
 POSITION DE DESS ERRAGE : POSIZIONE DI RILASCIO
- 10 TORQUE : ANZUGSMOMENT : 210<sup>±10</sup> Nm  
 COUPLE DE SERRAGE : COPIA DI SERRAGGIE :
- 11 FIXTURE OF RELEASE BOLT : LOESESCHRAUBENHALTER  
 SUPPORT DE LA VIS DE DESSERRAGE : TORQUE : ANZUGSMOMENT : 22.5 ±2.5 Nm  
 COUPLE DE SERRAGE : COPIA DI SERRAGGIE :

**GRAPHS FOR INFORMATION ONLY**

1 OPEN BREATHER HOLE : OFFENE ATMUNGSBOHRUNG / VERT TROU RENIFLEUR / APERTO FORO RESPIRATORE

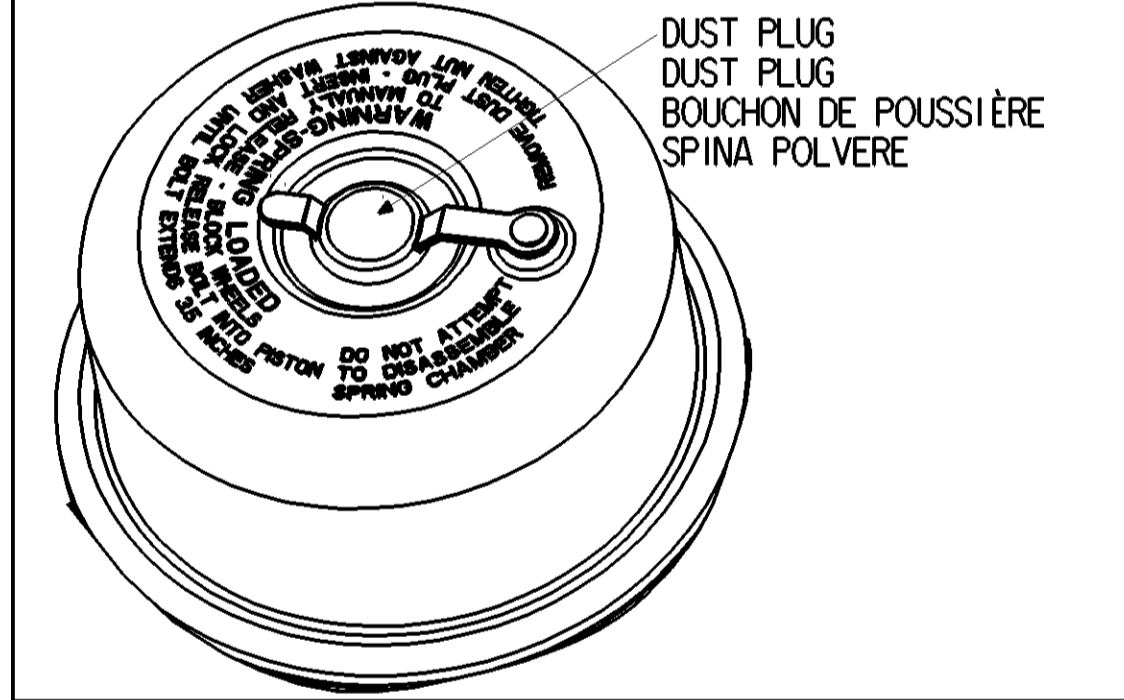
2 TORQUE : ANZUGSMOMENT : 34 Nm max.  
 COUPLE DE SERRAGE : COPIA DI SERRAGGIE :

3 DEFLECTION : AUSLENKUNG : 6° max BEI HUB / DEFLEXION : A COURSE / DEVIATION : A CORSA

**SURFACE PROTECTION**

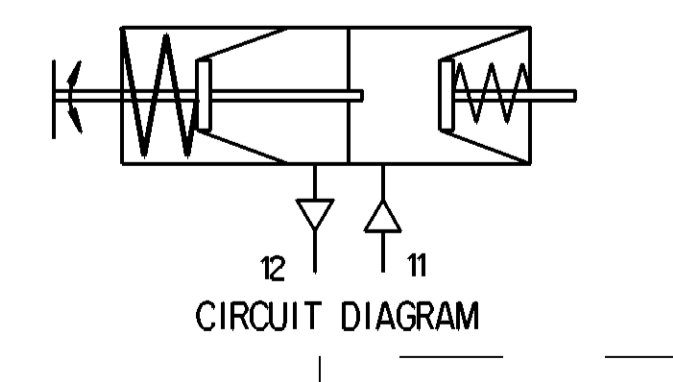
I	JED-739-3
II	JED-240-3
III	JED-007-3
IV	JED-240-5
V	JED-371-0
VI	RUBBER / PLASTIC
VII	JED-240-1

**CAUTION**  
**VORSICHT**  
**PRUDENCE**  
**ATTENZIONE**



AFTER REMOVAL OF CAGING/ RELEASE BOLT ENSURE THE HOLE IS ALWAYS COVERED WITH DUST PLUG  
 NACH ENTNAHME KÄFIG/LÖSEBOLZEN SICHERSTELLEN, DASS DIE BOHRUNG IMMER MIT STAUBSTOPFEN ABGEDECKT IST  
 1) APRES LE RETRAIT DE CAGING/BOLLON DE LIBERATION ASSUREZ-VOUS QUE LE TROU EST TOUJOURS COUVERT DE BOUCHON DE POUSSIERE  
 DOPO LA RIMOZIONE DEL BULLONE DI GABBIA/RILASCIO ASSICURARSI CHE IL FORO È SEMPRE COPERTO DA SPINA DI POLVERE

FAILURE TO INSTALL THE DUST PLUG IN THE CYLINDER HOLE MAY CAUSE PREMATURE FAILURE OF POWER SPRING AND POTENTIAL LOSS OF PARKING BRAKE FORCE  
 WENN DER STAUBSTOPFEN NICHT IN DIE ZYLINDERBOHRUNG EINGEBAUT WIRD, KANN ES ZU VORZEITIGEM AUSFALL DER KRAFTFEDER UND POTENTIELLEN VERLUST DER FESTSTELLBREMSEKRAFT KOMMEN  
 2) DÉFAUT D'INSTALLER LE BOUCHON DE POUSSIERE DANS LE TROU DU CYLINDRE PEUT CAUSER UNE DÉFAILLANCE PRÉMATURÉE DU RESSORT DE PUISSANCE ET UNE PÉRIE POTENTIELLE DE LA FORCE DE FREIN DE STATIONNEMENT  
 MANCATA INSTALLAZIONE DELLA SPINA DELLA POLVERE NEL FORO DEL CILINDRO PUÒ CAUSARE UN GUASTO PREMATURO DELLA MOLLA DI ALIMENTAZIONE E POTENZIALE PERDITA DELLA FORZA DEL FRENO DI STAZIONAMENTO



General Specification: ISO 8015, ISO 534-1, ISO 14405 LP		Copyright WABCO		<b>WABCO</b>	
Further Technical Data: 925 372 051 0	Date: 2022-11-25	Sheet: 1	Tr: 6	DOUBLE DIAPHRAGM TRISTOP 30/30	
Doc. Code: 005	2022-11-25	001	001	DOPPELDIAPHRAGMA-TRISTOP	
General Tolerances: ISO 2011		2023-01-03		TRISTOP A DOPPIA DIAFRAGMA	
Range of nominal dimensions in mm		Dimensions in mm		Metric No.	
Class	11	± 0.1	± 0.1	± 0.1	± 0.1
Class	12	± 0.15	± 0.15	± 0.15	± 0.15
Class	13	± 0.2	± 0.2	± 0.2	± 0.2
Class	14	± 0.3	± 0.3	± 0.3	± 0.3
Class	15	± 0.4	± 0.4	± 0.4	± 0.4
Class	16	± 0.5	± 0.5	± 0.5	± 0.5
Class	17	± 0.6	± 0.6	± 0.6	± 0.6
Class	18	± 0.7	± 0.7	± 0.7	± 0.7
Class	19	± 0.8	± 0.8	± 0.8	± 0.8
Class	20	± 0.9	± 0.9	± 0.9	± 0.9
Class	21	± 1.0	± 1.0	± 1.0	± 1.0
Class	22	± 1.2	± 1.2	± 1.2	± 1.2
Class	23	± 1.5	± 1.5	± 1.5	± 1.5
Class	24	± 2.0	± 2.0	± 2.0	± 2.0
Class	25	± 2.5	± 2.5	± 2.5	± 2.5
Class	26	± 3.0	± 3.0	± 3.0	± 3.0
Class	27	± 4.0	± 4.0	± 4.0	± 4.0
Class	28	± 5.0	± 5.0	± 5.0	± 5.0
Class	29	± 6.0	± 6.0	± 6.0	± 6.0
Class	30	± 8.0	± 8.0	± 8.0	± 8.0
Class	31	± 10.0	± 10.0	± 10.0	± 10.0
Class	32	± 12.0	± 12.0	± 12.0	± 12.0
Class	33	± 15.0	± 15.0	± 15.0	± 15.0
Class	34	± 20.0	± 20.0	± 20.0	± 20.0
Class	35	± 25.0	± 25.0	± 25.0	± 25.0
Class	36	± 30.0	± 30.0	± 30.0	± 30.0
Class	37	± 40.0	± 40.0	± 40.0	± 40.0
Class	38	± 50.0	± 50.0	± 50.0	± 50.0
Class	39	± 60.0	± 60.0	± 60.0	± 60.0
Class	40	± 80.0	± 80.0	± 80.0	± 80.0
Class	41	± 100.0	± 100.0	± 100.0	± 100.0
Class	42	± 120.0	± 120.0	± 120.0	± 120.0
Class	43	± 150.0	± 150.0	± 150.0	± 150.0
Class	44	± 200.0	± 200.0	± 200.0	± 200.0
Class	45	± 250.0	± 250.0	± 250.0	± 250.0
Class	46	± 300.0	± 300.0	± 300.0	± 300.0
Class	47	± 400.0	± 400.0	± 400.0	± 400.0
Class	48	± 500.0	± 500.0	± 500.0	± 500.0
Class	49	± 600.0	± 600.0	± 600.0	± 600.0
Class	50	± 800.0	± 800.0	± 800.0	± 800.0
Class	51	± 1000.0	± 1000.0	± 1000.0	± 1000.0
Class	52	± 1200.0	± 1200.0	± 1200.0	± 1200.0
Class	53	± 1500.0	± 1500.0	± 1500.0	± 1500.0
Class	54	± 2000.0	± 2000.0	± 2000.0	± 2000.0
Class	55	± 2500.0	± 2500.0	± 2500.0	± 2500.0
Class	56	± 3000.0	± 3000.0	± 3000.0	± 3000.0
Class	57	± 4000.0	± 4000.0	± 4000.0	± 4000.0
Class	58	± 5000.0	± 5000.0	± 5000.0	± 5000.0
Class	59	± 6000.0	± 6000.0	± 6000.0	± 6000.0
Class	60	± 8000.0	± 8000.0	± 8000.0	± 8000.0
Class	61	± 10000.0	± 10000.0	± 10000.0	± 10000.0
Class	62	± 12000.0	± 12000.0	± 12000.0	± 12000.0
Class	63	± 15000.0	± 15000.0	± 15000.0	± 15000.0
Class	64	± 20000.0	± 20000.0	± 20000.0	± 20000.0
Class	65	± 25000.0	± 25000.0	± 25000.0	± 25000.0
Class	66	± 30000.0	± 30000.0	± 30000.0	± 30000.0
Class	67	± 40000.0	± 40000.0	± 40000.0	± 40000.0
Class	68	± 50000.0	± 50000.0	± 50000.0	± 50000.0
Class	69	± 60000.0	± 60000.0	± 60000.0	± 60000.0
Class	70	± 80000.0	± 80000.0	± 80000.0	± 80000.0
Class	71	± 100000.0	± 100000.0	± 100000.0	± 100000.0
Class	72	± 120000.0	± 120000.0	± 120000.0	± 120000.0
Class	73	± 150000.0	± 150000.0	± 150000.0	± 150000.0
Class	74	± 200000.0	± 200000.0	± 200000.0	± 200000.0
Class	75	± 250000.0	± 250000.0	± 250000.0	± 250000.0
Class	76	± 300000.0	± 300000.0	± 300000.0	± 300000.0
Class	77	± 400000.0	± 400000.0	± 400000.0	± 400000.0
Class	78	± 500000.0	± 500000.0	± 500000.0	± 500000.0
Class	79	± 600000.0	± 600000.0	± 600000.0	± 600000.0
Class	80	± 800000.0	± 800000.0	± 800000.0	± 800000.0
Class	81	± 1000000.0	± 1000000.0	± 1000000.0	± 1000000.0
Class	82	± 1200000.0	± 1200000.0	± 1200000.0	± 1200000.0
Class	83	± 1500000.0	± 1500000.0	± 1500000.0	± 1500000.0
Class	84	± 2000000.0	± 2000000.0	± 2000000.0	± 2000000.0
Class	85	± 2500000.0	± 2500000.0	± 2500000.0	± 2500000.0
Class	86	± 3000000.0	± 3000000.0	± 3000000.0	± 3000000.0
Class	87	± 4000000.0	± 4000000.0	± 4000000.0	± 4000000.0
Class	88	± 5000000.0	± 5000000.0	± 5000000.0	± 5000000.0
Class	89	± 6000000.0	± 6000000.0	± 6000000.0	± 6000000.0
Class	90	± 8000000.0	± 8000000.0	± 8000000.0	± 8000000.0
Class	91	± 10000000.0	± 10000000.0	± 10000000.0	± 10000000.0
Class	92	± 12000000.0	± 12000000.0	± 12000000.0	± 12000000.0
Class	93	± 15000000.0	± 15000000.0	± 15000000.0	± 15000000.0
Class	94	± 20000000.0	± 20000000.0	± 20000000.0	± 20000000.0
Class	95	± 25000000.0	± 25000000.0	± 25000000.0	± 25000000.0
Class	96	± 30000000.0	± 30000000.0	± 30000000.0	± 30000000.0
Class	97	± 40000000.0	± 40000000.0	± 40000000.0	± 40000000.0
Class	98	± 50000000.0	± 50000000.0	± 50000000.0	± 50000000.0
Class	99	± 60000000.0	± 60000000.0	± 60000000.0	± 60000000.0
Class	100	± 80000000.0	± 80000000.0	± 80000000.0	± 80000000.0
Class	101	± 100000000.0	± 100000000.0	± 100000000.0	± 100000000.0
Class	102	± 120000000.0	± 120000000.0	± 120000000.0	± 120000000.0
Class	103	± 150000000.0	± 150000000.0	± 150000000.0	± 150000000.0
Class	104	± 200000000.0	± 200000000.0	± 200000000.0	± 200000000.0
Class	105	± 250000000.0	± 250000000.0	± 250000000.0	± 250000000.0
Class	106	± 300000000.0	± 300000000.0	± 300000000.0	± 300000000.0
Class	107	± 400000000.0	± 400000000.0	± 400000000.0	± 400000000.0
Class	108	± 500000000.0	± 500000000.0	± 500000000.0	± 500000000.0
Class	109	± 600000000.0	± 600000000.0	± 600000000.0	± 600000000.0
Class	110	± 800000000.0	± 800000000.0	± 800000000.0	± 800000000.0
Class	111	± 1000000000.0	± 1000000000.0	± 1000000000.0	± 1000000000.0
Class	112	± 1200000000.0	± 1200000000.0	± 1200000000.0	± 1200000000.0
Class	113	± 1500000000.0	± 1500000000.0	± 1500000000.0	± 1500000000.0
Class	114	± 2000000000.0	± 2000000000.0	± 2000000000.0	± 2000000000.0
Class	115	± 2500000000.0	± 2500000000.0	± 2500000000.0	± 2500000000.0
Class	116	± 3000000000.0	± 3000000000.0	± 3000000000.0	± 3000000000.0
Class	117	± 4000000000.0	± 4000000000.0	± 4000000000.0	± 4000000000.0
Class	118	± 5000000000.0	± 5000000000.0	± 5000000000.0	± 5000000000.0
Class	119	± 6000000000.0	± 6000000000.0	± 6000000000.0	± 6000000000.0
Class	120	± 8000000000.0	± 8000000000.0	± 8000000000.0	± 8000000000.0
Class	121	± 10000000000.0	± 10000000000.0	± 10000000000.0	± 10000000000.0
Class	122	± 12000000000.0	± 12000000000.0	± 12000000000.0	± 12000000000.0
Class	123	± 15000000000.0	± 15000000000.0	± 15000000000.0	± 15000000000.0
Class	124	± 20000000000.0	± 20000000000.0	± 20000000000.0	± 20000000000.0