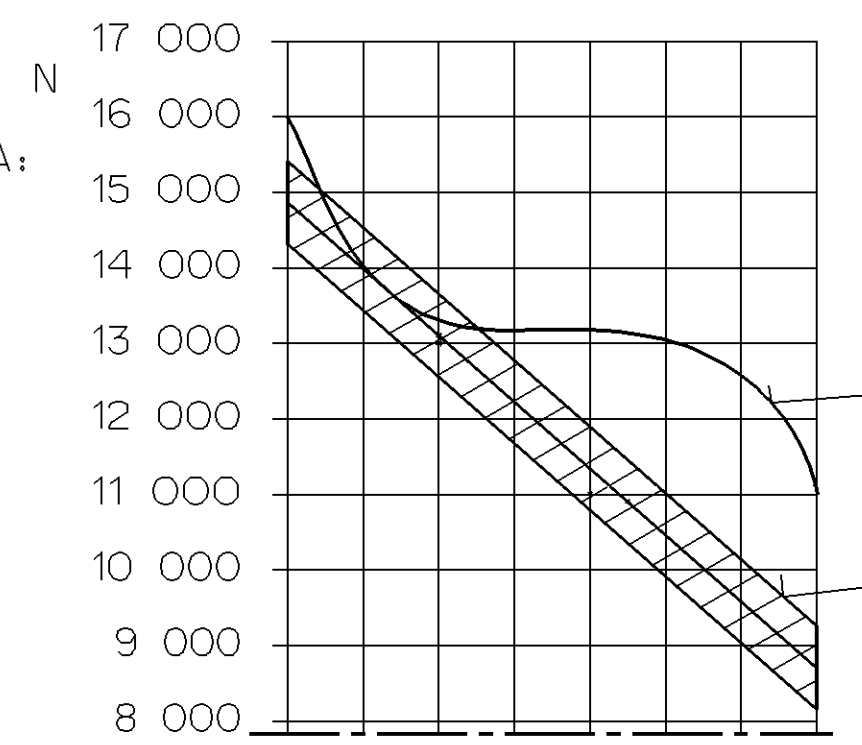


SURFACE PROTECT./OBERFL. SCHUTZ	
I	RUBBER / PLASTIC <sup>Ⓟ</sup>
II	JED-371
III	AI : JED-259
IV	JED-240-3
V	JED-256-1
VI	JED-240-2

CONTROL PRESSURE  
DICHTPRUEFDRUCK .... MAX pe 10 bar  
PRESSION D'ESSAI  
PRESSIONE DI PROVA

FORCE:  
KRAFT: N  
FORCE:  
FORZZA:



AIR VOLUME OF SERVICE BRAKE PART AT 2/3 OF ITS STROKE  
HUBVOLUMEN DES BETRIEBSBREMSTEILES BEI 2/3 HUB  
VOLUME D'AIR DU DISPOSITIF DU FREIN DE SERVICE A 2/3 DE LA COURSE  
VOLUME D'ARIA DELLA SEZIONE DI FRENO DI SERVIZIO A 2/3 DELLA CORSA

AIR VOLUME OF SPRING BRAKE PART  
HUBVOLUMEN DES FEDERSPEICHERS  
VOLUME D'AIR DU DISPOSITIF RESSORT  
VOLUME D'ARIA DELLA SEZIONE A MOLLA

OUTPUT FORCE OF SERVICE BRAKE PART AT  
KRAFTABGABE DES BETRIEBSBREMSTEILES BEI  
EFFORT DE POUSSEE DU DISPOSITIF DU FREIN DE SERVICE SOUS  
FORZA DI SPINTA DELLA SEZIONE DI FRENO DI SERVIZIO PER

OUTPUT FORCE OF SPRING BRAKE PART, RELEASE PRESSURE  
KRAFTABGABE DES FEDERSPEICHERS, LOESED RUCK  
EFFORT DE PUSSEE DU DISPOSITIF RESSORT, PRESSION DE DESSERRAGE  
FORZA DI SPINTA DELLA SEZIONE A MOLLA, PRESSIONE DI RILASCIO

FORCE OF RETURN SPRING OF SERVICE BRAKE PART  
RUECKSTELLFEDERKRAFT DES BETRIEBSBREMSTEILES  
EFFORT DU RESSORT DE RAPPEL DU DISPOSITIF DU FREIN DE SERVICE  
FORZA DELLA MOLLA DI RITORNO DELLA SEZIONE DI FRENO DI SERVIZIO

THERMAL RANGE OF APPLICATION :  
THERMISCHER ANWENDUNGSBEREICH : -40°C...+80 °C  
GAMME D'APPLICATION THERMIQUE :  
CAMPO DI APPLICAZIONE TERMICA :

PORT : SERVICE BRAKING SYSTEM, WORKING PRESSURE : MAX pe 8 bar  
ANSCHLUSS : BERIEBSBREMSEANLAGE, BETRIEBSDRUCK  
ORIFICE : <sup>11</sup> DISPOSITIF DE FREINAGE DE SERVICE, PRESSION D'UTILISATION  
ORIFIZIO : DISPOSITIVO DI FRENATURA DI SERVIZIO, PRESSIONE DI ESERCIZIO

PORT : SPRING BRAKE CYLINDER, WORKING PRESSURE : MAX pe 8 bar  
ANSCHLUSS : FEDERSPEICHERZYLINDER, BETRIEBSDRUCK  
ORIFICE : <sup>12</sup> CYLINDRE A RESSORT, PRESSION D'UTILISATION  
ORIFIZIO : CILINDRO A MOLLA, PRESSIONE DI ESERCIZIO

NOMINAL DIAMETER :  
NENNWEITE : MIN Ø8.5mm  
DIAMETRE NOMINAL :  
DIAMETRO NOMINALE :

MEDIUM : AIR  
MEDIUM : LUFT  
FLUIDE : AIR  
FLUIDO : ARIA

DRIVING POSITION  
FAHRTSTELLUNG  
POSITION DE MARCHÉ  
POSIZIONE DI MARCIA

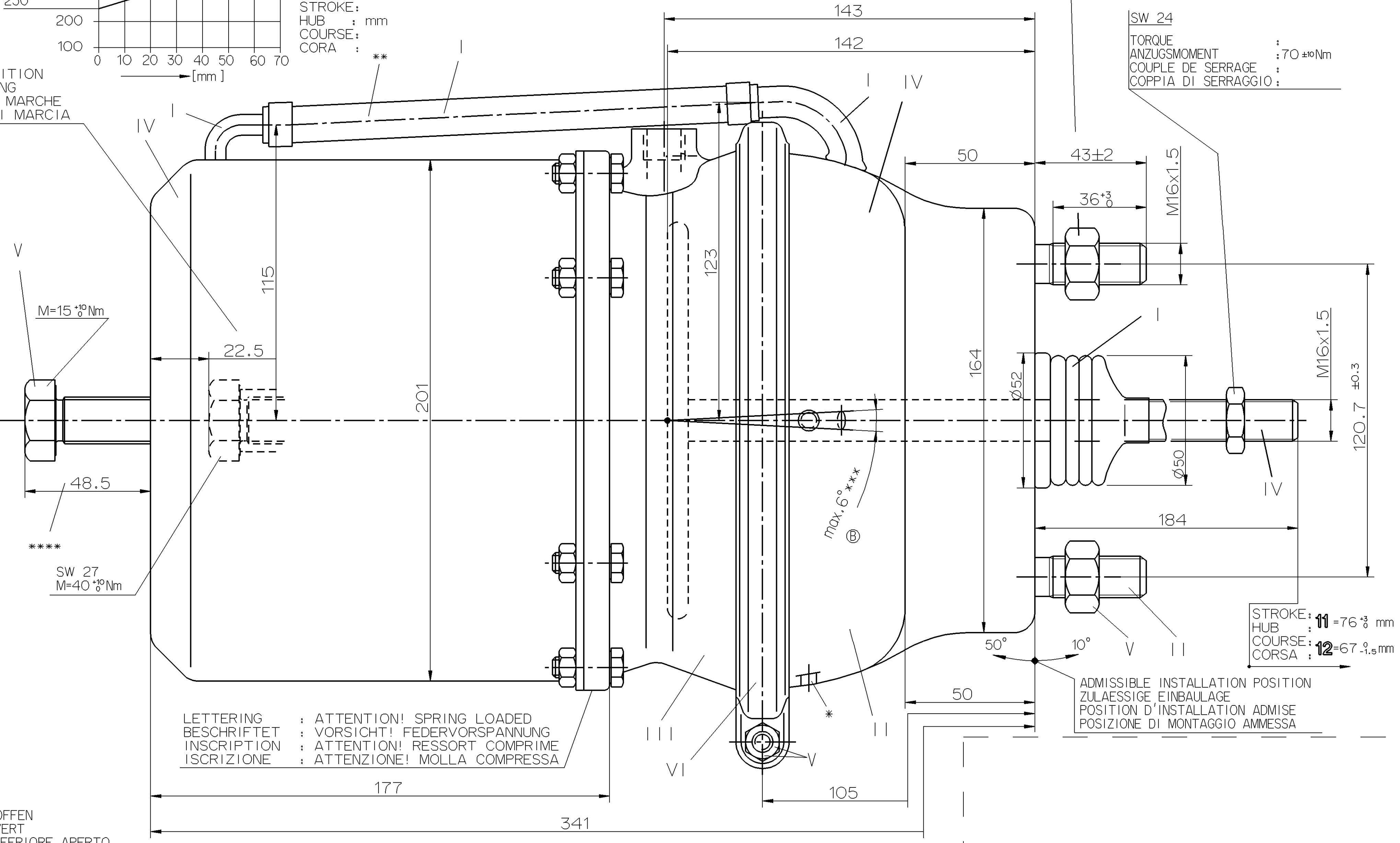
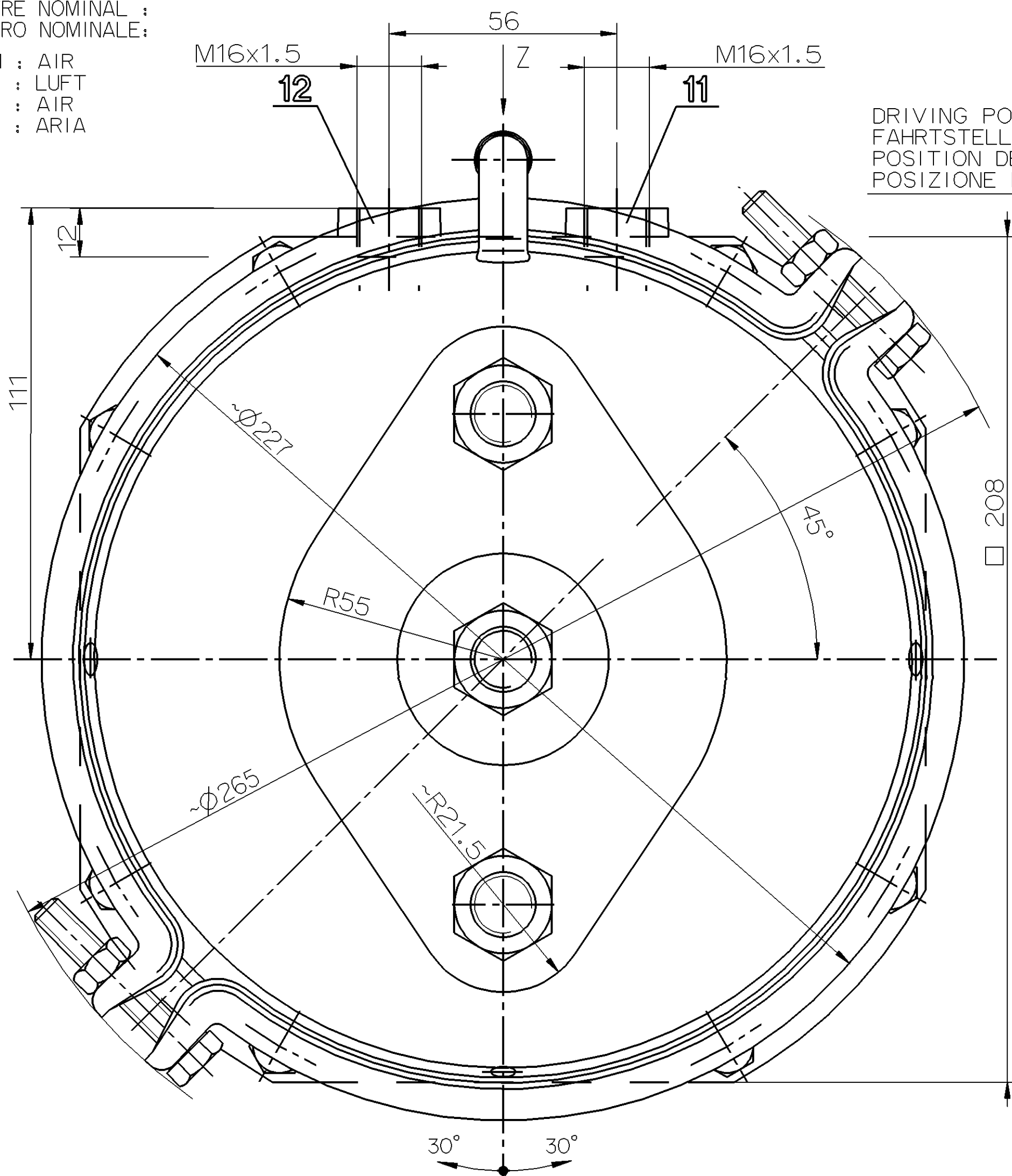
STROKE:  
HUB : mm  
COURSE :  
CORA : \*\*

SW 24

TORQUE : 210 <sup>-30</sup> Nm  
ANZUGSMOMENT :  
COUPLE DE SERRAGE :  
COPPIA DI SERRAGGIO :

SW 24

TORQUE : 70 <sup>+10</sup> Nm  
ANZUGSMOMENT :  
COUPLE DE SERRAGE :  
COPPIA DI SERRAGGIO :



LETTERING : ATTENTION! SPRING LOADED  
BESCHRIFTET : VORSICHT! FEDERVORSpannung  
INSCRIPTION : ATTENTION! RESSORT COMPRI ME  
ISCRIZIONE : ATTENZIONE! MOLLA COMPRESA

ADMISSIBLE INSTALLATION POSITION  
ZULAESSIGE EINBAULAGE  
POSITION D'INSTALLATION ADMISE  
POSIZIONE DI MONTAGGIO AMMESSA

STROKE : <sup>11</sup> = 76 <sup>-3</sup> mm  
HUB :  
COURSE :  
CORSA : <sup>12</sup> = 67 <sup>-1.5</sup> mm

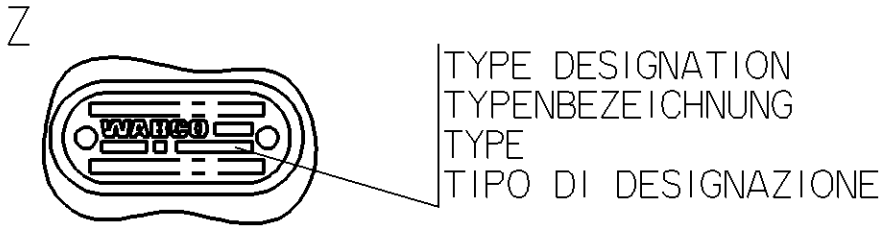
\* ) OPEN BREATHER HOLE : Ø6  
OFFEN ATMUNGSBOHRUNG  
OUVERT TROU RENIFLEUR  
APERTO FORO RESPIRATORE

TO BE INSTALLED WITH BREATHER HOLE OPEN  
IM EINBAUZUSTAND UNTERE ATMUNGSBOHRUNG OFFEN  
A MONTER AVEC LE RENIFLARD INFERIEUR OUVERT  
INSTALLAZIONE : CON IL FORO DI SFIATO INFERIORE APERTO

SW = WIDTH ACROSS FLATS  
SCHLUESSELWEITE  
SURPLATS  
LARGHEZZA IN CHIAVE

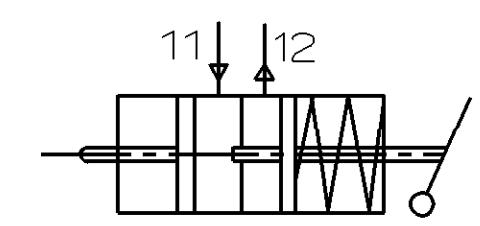
\*\* ) POSITION OF BREATHER TUBE IN UPPER MANDATORY  
ATMUNGSBOHR MUSS BEIM EINBAU IM OBEREN BEREICH ANGEORNET WERDEN  
AU MONTAGE IL EST IMPOSE A DISPOSER LE TUBE RENIFLANT DANS LA ZONE SUPERIEURE  
PER IL MONTAGGIO SI DEVE DISPORRE IL TUBO RESPIRATORE NELLA ZONA SUA

\*\*\* ) DEFLECTION : max. 6° AT STROKE  
AUSLENKUNG : BEI HUB 0 mm  
DEFLEXION : A COURSE  
DEVIAZIONE : A CORSA



RELEASE POSITION  
LOESESTELLUNG  
POSITION DE DESSERRAGE  
POSIZIONE DI RILASCIO

CODNITION AS DELIVERED  
LIEFERZUSTAND  
ETAT DE LEVRAISON  
STATO DI CONSEGNA



General Specifications: JED-334-0		Copyright WABCO®	
Further Technical Data:		Date	Signature
Doc. Code:	Sheet: To:	2012-11-19	Czenyba
General Tolerances JED-261		Checked	2012-11-20 Szuberski
Range of Nominal Dimensions ( ± mm)		Expert Szczuplak	
Class 1)	≤ 50 > 50 ≤ 180 > 180 > 400	Mises	Scale
Fine	0.5 1.0 1.5 2.0	1:1	
Medium	1.0 2.0 3.0 4.0	Hg	
Coarse	2.0 3.5 5.0 6.5	Size	CAD System
Tapped Holes acc. 1 ISO 4039 / JED-162		Pro/E	
1) Tolerance Class Applied Crossmarked		ECN No.	Revision
		159982	6 x B 5380
		Tech. Resp.	

**WABCO** <sup>Ⓟ</sup>

Universal Tristop-Cylinder <sup>Ⓟ</sup>  
Universal Tristop-Zylinder  
Universal Cylindre-Tristop  
Universal Cilindro-Tristop

36/36

Material No.: 925 453 200 0  
Date of first issue: 03-09-16  
Doc. Code: 009 ML  
Language: 1/1  
Replacement for:

Non e permesso copiare o riprodurre questo documento, ne utilizzare il contenuto o i dati senza permesso scritto dalla WABCO. Toute reproduction ou utilisation de ce document, sans autorisation écrite de la WABCO, est formellement interdite. All rights reserved. No part of this document may be reproduced, stored in a retrieval system, or transmitted in any form or by any means, electronic, mechanical, photocopying, recording, or otherwise, without the prior written permission of WABCO.