

SURFACE PROTECT. / OBERFL. SCHUTZ

I	PLASTIC / RUBBER
II	JED-371
III	AI : JED-259
V	JED-240-3
VI	JED-256-1
VII	JED-240-2

CONTROL PRESSURE  
DICHTPRUEFD RUCK .... MAX pe 10 bar  
PRESSION D'ESSAI  
PRESSIONE DI PROVA

FORCE : 10 000 N  
KRAFT : N  
FORCE : 9 000 N  
FORZA : 8 000 N

PORT : SERVICE BRAKING SYSTEM, WORKING PRESSURE  
ANSCHLUSS : BERIEBSBREMSANLAGE, BETRIEBSDRUCK : MAX pe 8 bar  
ORIFICE : 11 DISPOSITIF DE FREINAGE DE SERVICE, PRESSION D'UTILISATION  
ORIFIZIO : DISPOSITIVO DI FRENATURA DI SERVIZIO, PRESSIONE DI ESERCIZIO

PORT : SPRING BRAKE CYLINDER, WORKING PRESSURE  
ANSCHLUSS : FEDERSPEICHERZYLINDER, BETRIEBSDRUCK : MAX pe 8 bar  
ORIFICE : 12 CYLINDRE A RESSORT, PRESSION D'UTILISATION  
ORIFIZIO : CILINDRO A MOLLA, PRESSIONE DI ESERCIZIO

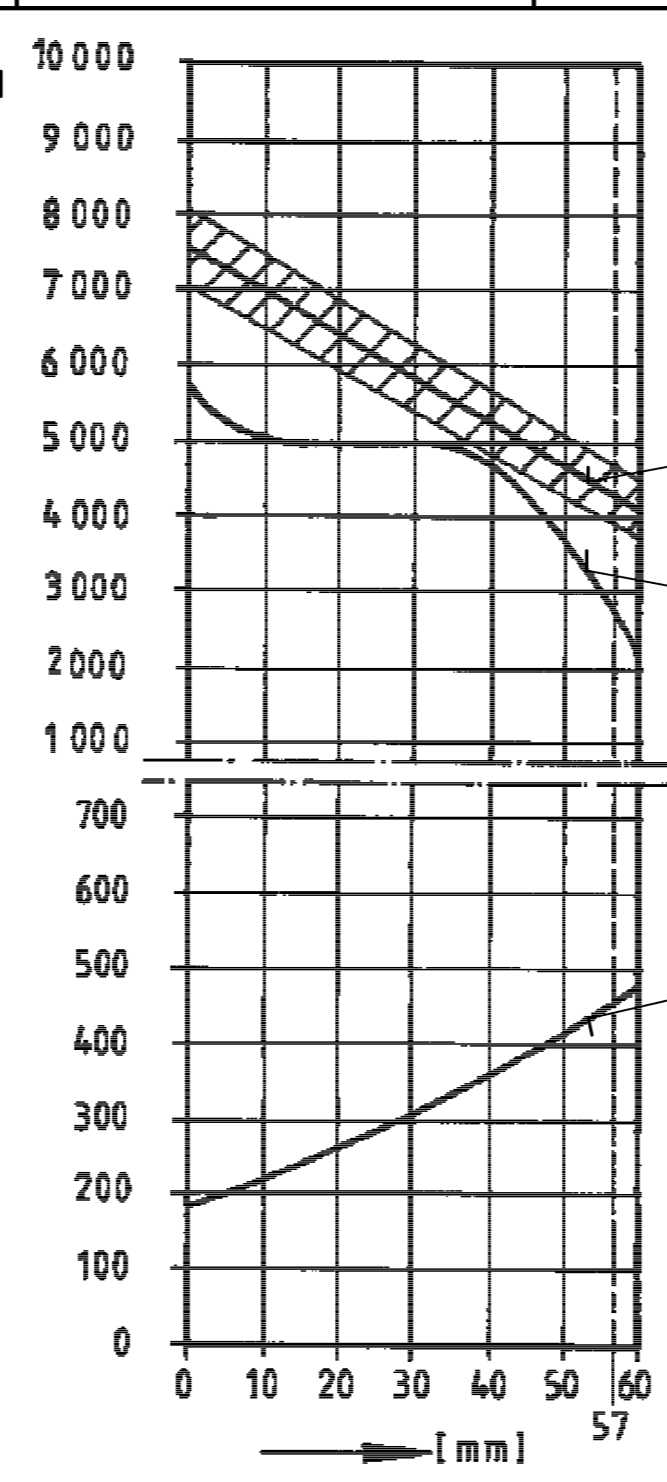
THERMAL RANGE OF APPLICATION : -40 °C...+80 °C  
THERMISCHER ANWENDUNGSBEREICH : -40 °C...+80 °C  
GAMME D'APPLICATION THERMIQUE  
CAMPO DI APPLICAZIONE TERMICA

NOMINAL DIAMETER :  
NENNWEITE : MIN Ø8.5mm  
DIAMETRE NOMINAL :  
DIAMETRO NOMINALE :

MEDIUM : AIR  
MEDIUM : LUFT  
FLUIDE : AIR  
FLUIDO : ARIA



TYPE DESIGNATION  
TYPENBEZEICHNUNG  
TYPE  
TIPO DI DESIGNAZIONE



AIR VOLUME OF SERVICE BRAKE PART AT 2/3 OF ITS STROKE  
HUBVOLUMEN DES BETRIEBSBREMSTEILES BEI 2/3 HUB  
VOLUME D'AIR DU DISPOSITIF DU FREIN DE SERVICE A 2/3 DE LA COURSE  
VOLUME D'ARIA DELLA SEZIONE DI FRENO DI SERVIZIO A 2/3 DELLA CORSA

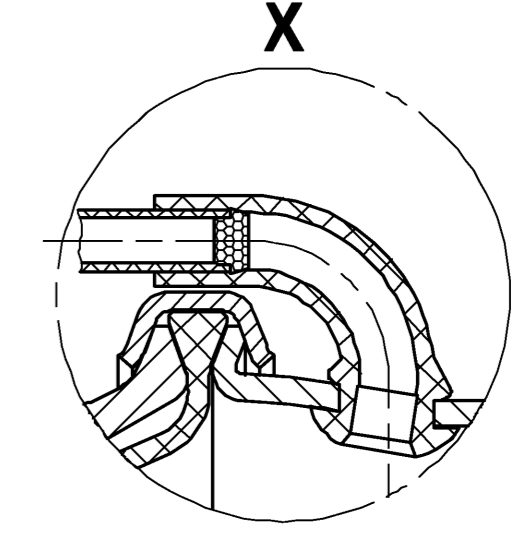
AIR VOLUME OF SPRING BRAKE PART  
HUBVOLUMEN DES FEDERSPEICHERS  
VOLUME D'AIR DU DISPOSITIF RESSORT  
VOLUME D'ARIA DELLA SEZIONE A MOLLA

OUTPUT FORCE OF SPRING BRAKE PART, RELEASE PRESSURE  
KRAFTABGABE DES FEDERSPEICHERS, LOESEDRUCK  
EFFORT DE POUSEE DU DISPOSITIF RESSORT, PRESSION DE DESSERRAGE  
FORZA DI SPINTA DELLA SEZIONE A MOLLA, PRESSIONE DI RILASCIO

OUTPUT FORCE OF SERVICE BRAKE PART AT  
KRAFTABGABE DES BETRIEBSBREMSTEILES BEI  
EFFORT DE POUSEE DU DISPOSITIF DU FREIN DE SERVICE SOUS  
FORZA DI SPINTA DELLA SEZIONE DI FRENO DI SERVIZIO PER

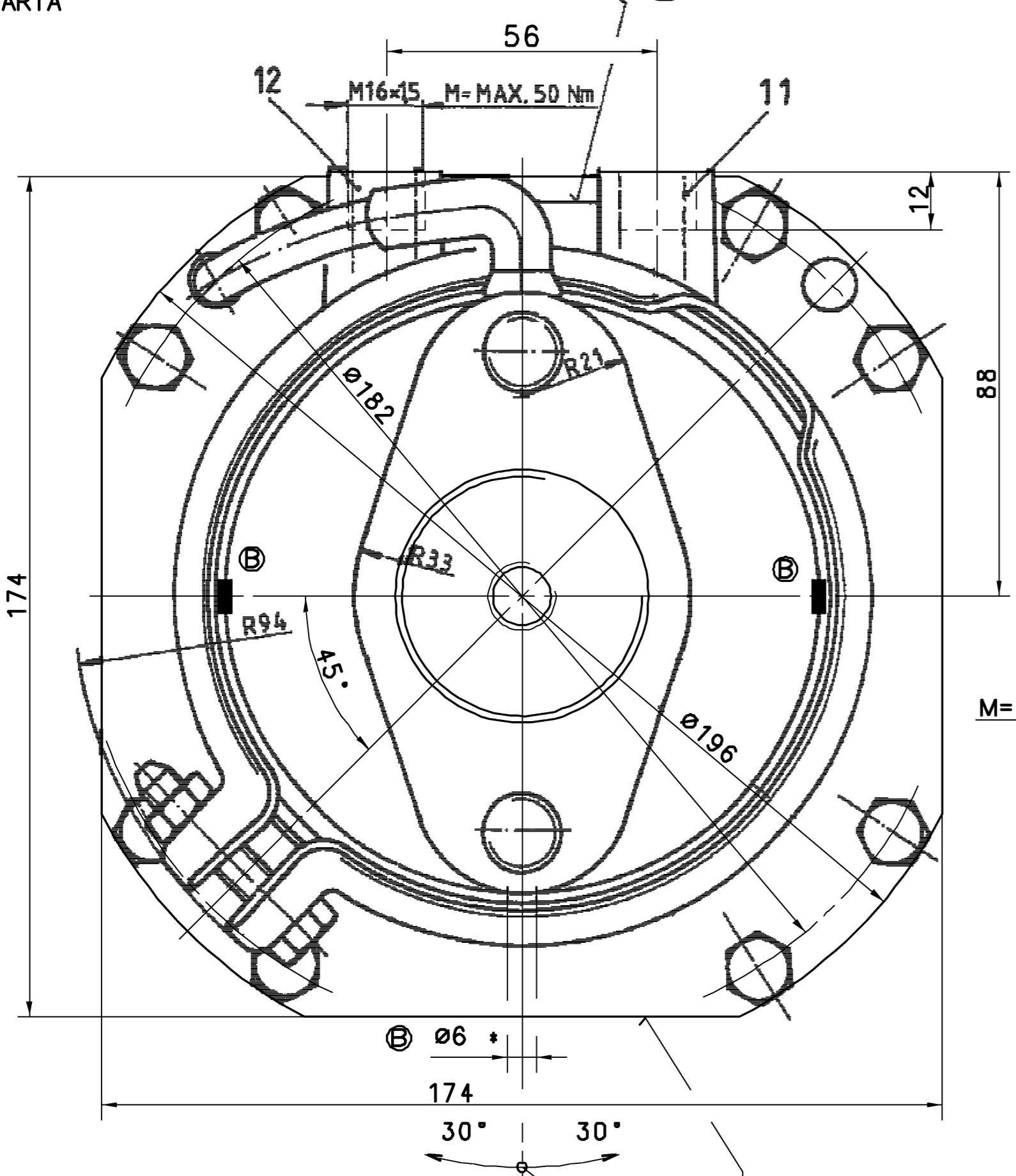
FORCE OF RETURN SPRING OF SERVICE BRAKE PART  
RUECKSTELLFEDERKRAFT DES BETRIEBSBREMSTEILES  
EFFORT DU RESSORT DE RAPPEL DU DISPOSITIF DU FREIN DE SERVICE  
FORZA DELLA MOLLA DI RITORNO DELLA SEZIONE DI FRENO DI SERVIZIO

POSITION OF BREATHER TUBE IN UPPER MANDATORY  
ATMUNGSBOHR MUSS BEIM EINBAU IM OBEREN BEREICH ANGEORNET WERDEN  
AU MONTAGE IL EST IMPOSE A DISPOSER LE TUBE RENIFLANT DANS LA ZONE SUPERIEURE  
PER IL MONTAGGIO SI DEVE DISPORRE IL TUBO RESPIRATORE NELLA ZONA SUA



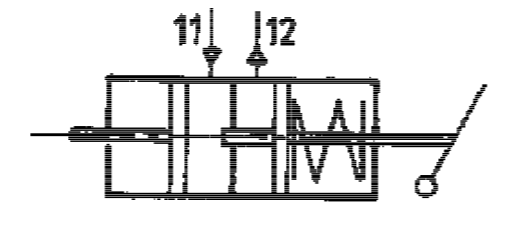
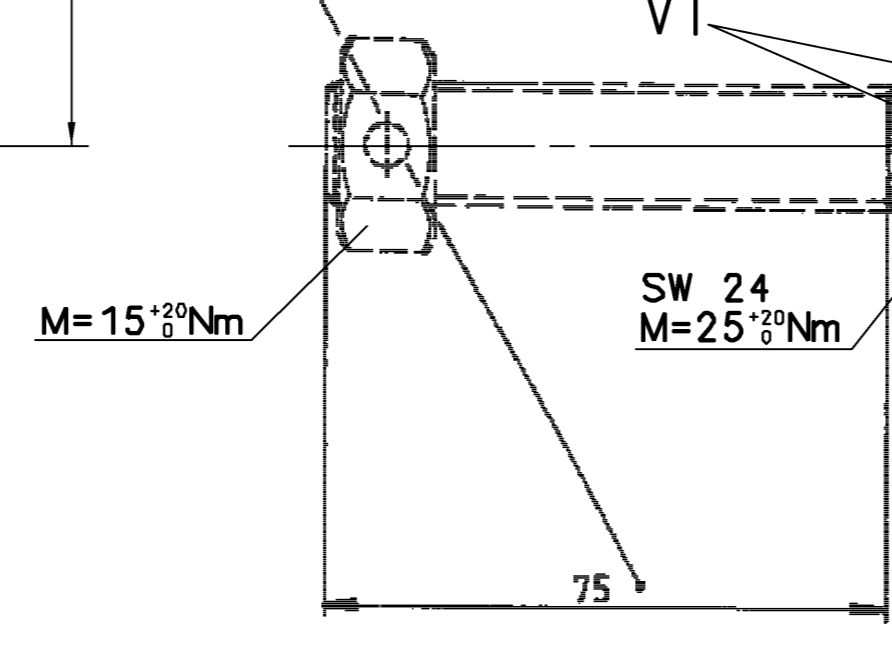
\*) OPEN BREATHER HOLE  
OFFEN ATMUNGSBOHRUNG : Ø6  
OUVERT TROU RENIFLEUR :  
APERTO FORO RESPIRATORE :

WIDTH ACROSS FLATS  
SW= SCHLUESSELWEITE  
SURPLATS  
LARGHEZZA IN CHIAVE



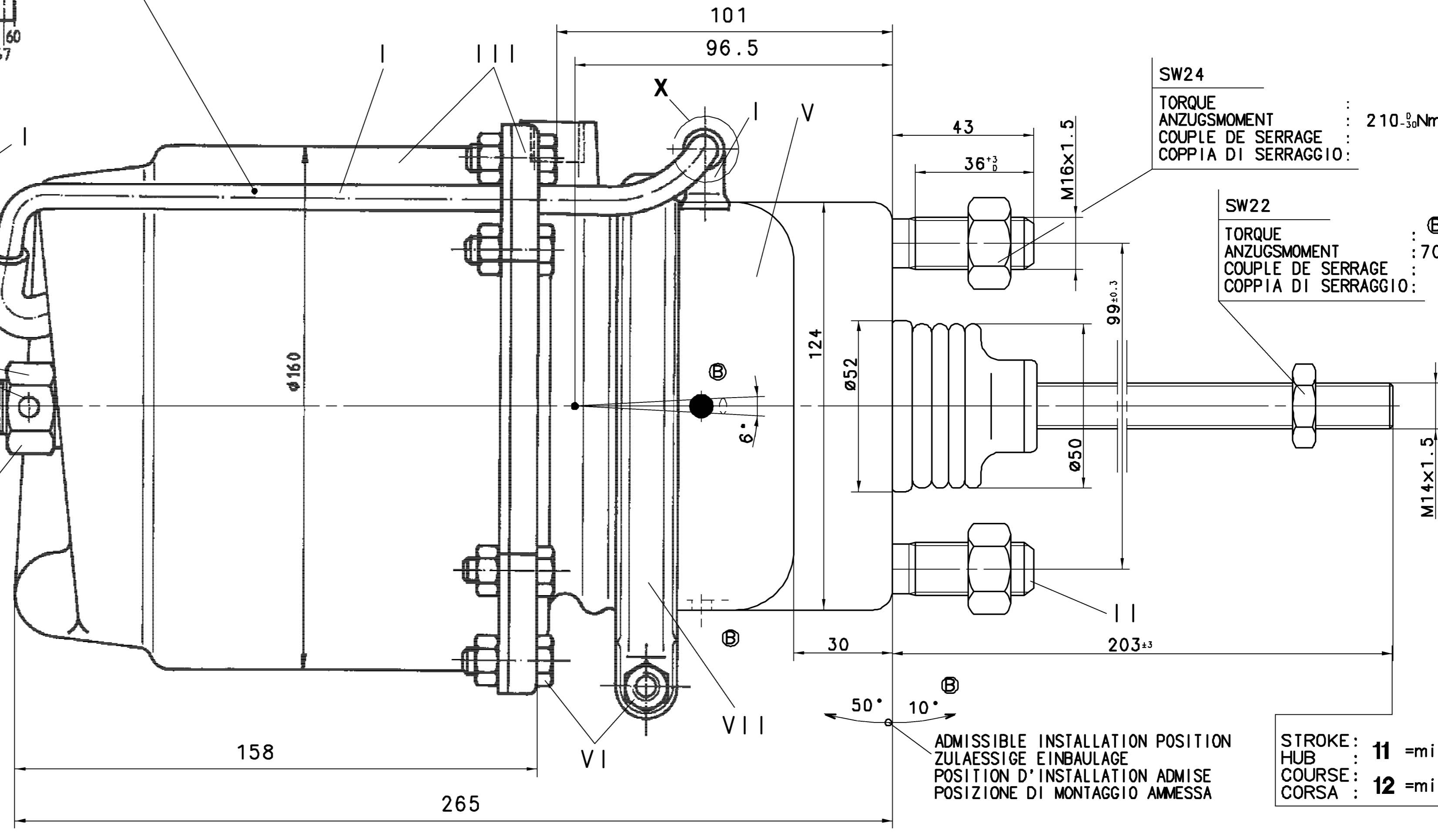
RELEASE POSITION  
LOESESTELLUNG  
POSITION DE DESSERRAGE  
POSIZIONE DI RILASCIO

STATE AS SUPLIED ..... RELEASED  
ANLIEFERUNGSZUSTAND ..... GELOEST  
ETAT DE LIVRASION ..... DESSERRE  
STATO DI CONSEGNA ..... RILASCIATO



LETTERING  
BESCHRIFTET ..... VORSICHT FEDERVORSPANNUNG  
INSCRIPTION  
ISCRIZIONE

TO BE INSTALLED WITH BREATHER HOLE OPEN  
IM EINBAUZUSTAND UNTERE ATMUNGSBOHRUNG OFFEN  
A MONTER AVEC LE RENIFLARD INFERIEUR OUVERT  
INSTALLAZIONE : CON IL FORO DI SFIATO INFERIORE APERTO



GENERAL SPECIFICATION: JED-334

FURTHER TECHNICAL DATA:

DOC. CODE: SHEET: TO

GENERAL TOLERANCES

RANGE OF NOMINAL DIMENSIONS (± mm)		Δ
CLASS	1)	
≤50	±0.10	± 3'
> 50 ≤ 180	±0.15	
> 180 ≤ 400	±0.20	
> 400	±0.30	

TAPPED HOLES ACC. 180 4038 / JED-182

1) TOLERANCE CLASS APPLIED CROSSMARKED

DATE: 03-09-22

REVISION: 06-03-07

SIZE: 10xA

PRODUCT IDENTIFICATION NO. 925 455 200 0

DOC. CODE: 605

SHEET: 1/1

SHAPE CODE

REPLACEMENT FOR

WABCO  
Tristop® -Cylinder F12/16  
Tristop® -Zylinder  
Cylindre-Tristop®  
Cilindro-Tristop®

EXP. CODE: 8111

PRODUCT TYPE: [ ]