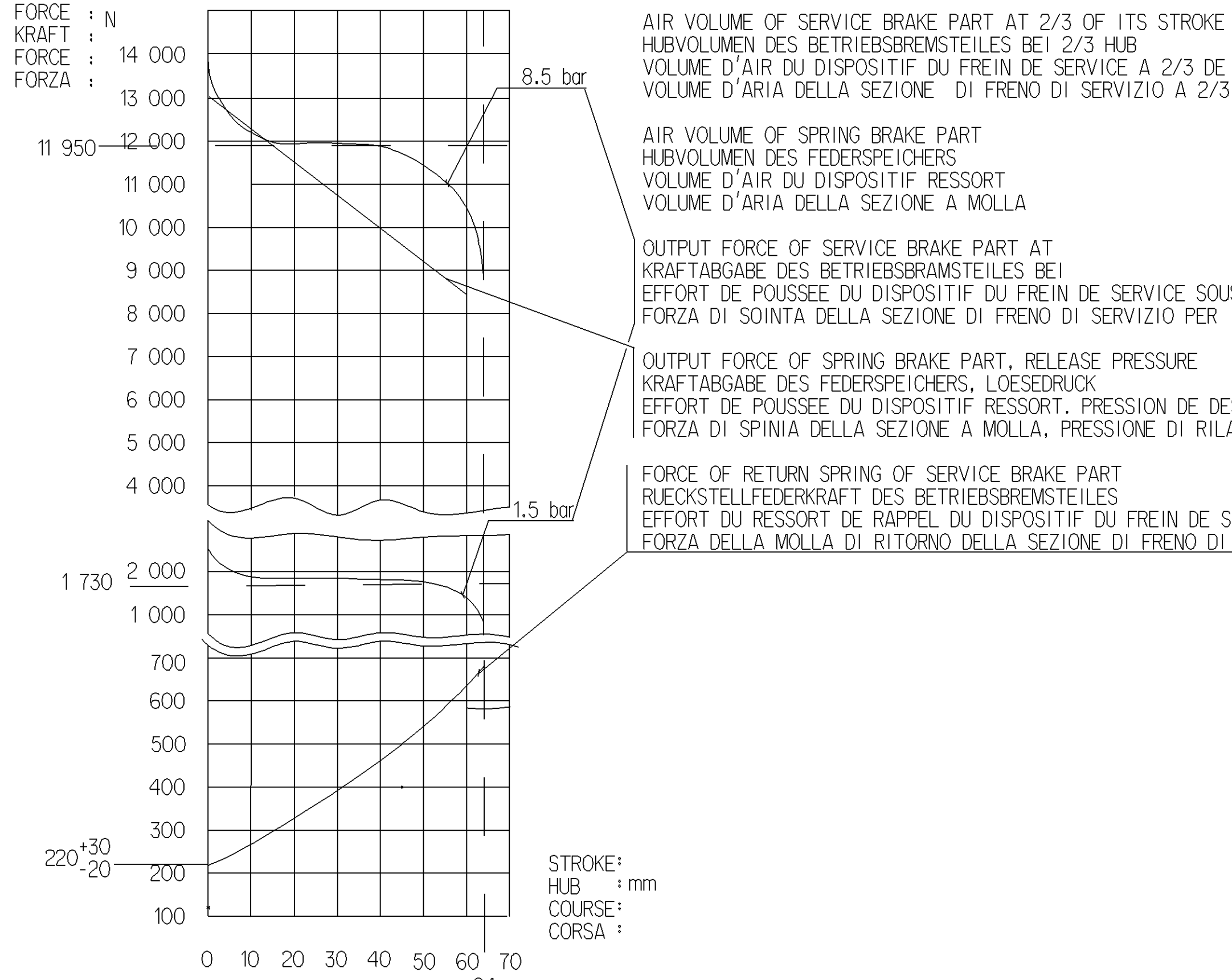


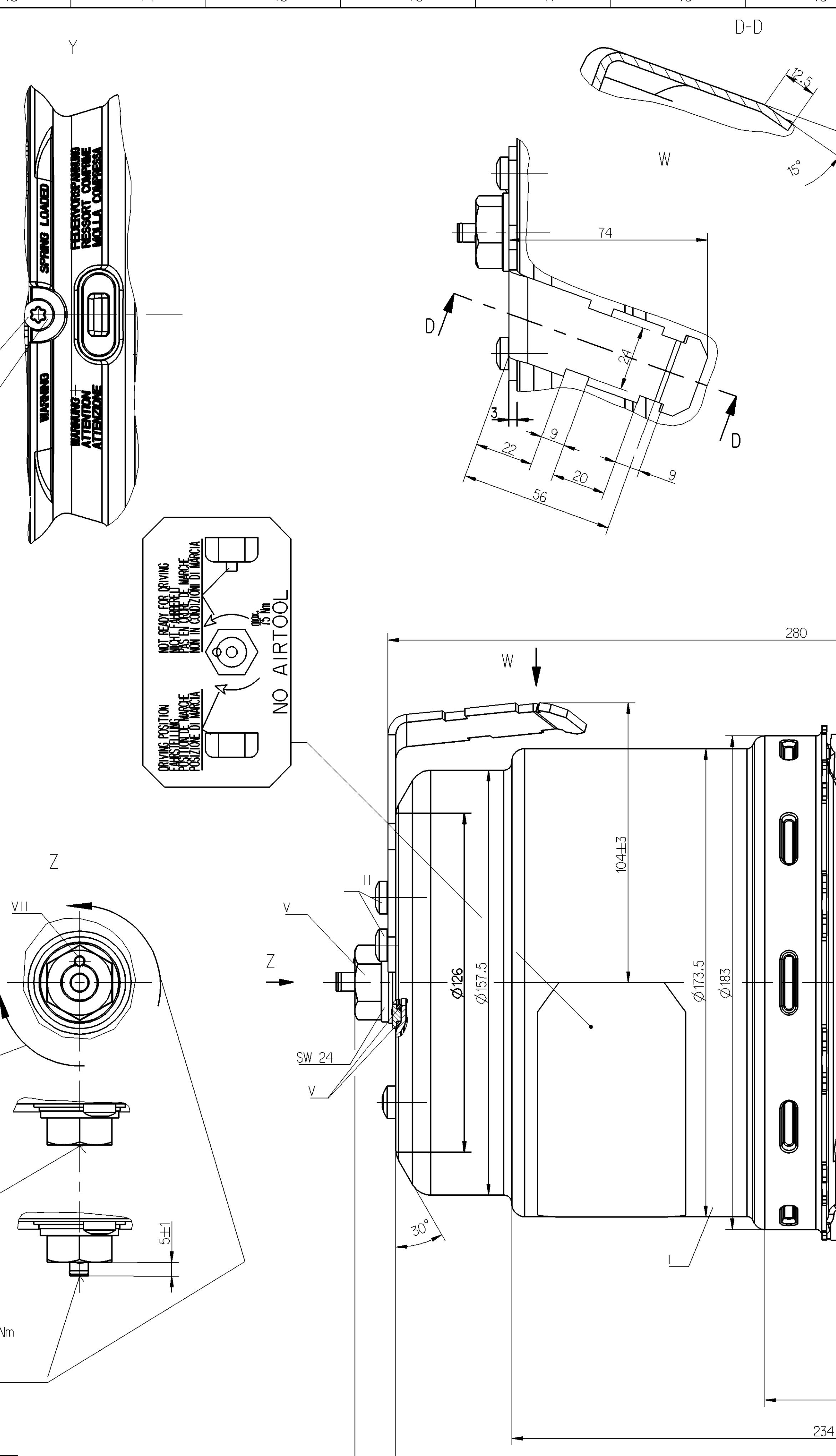
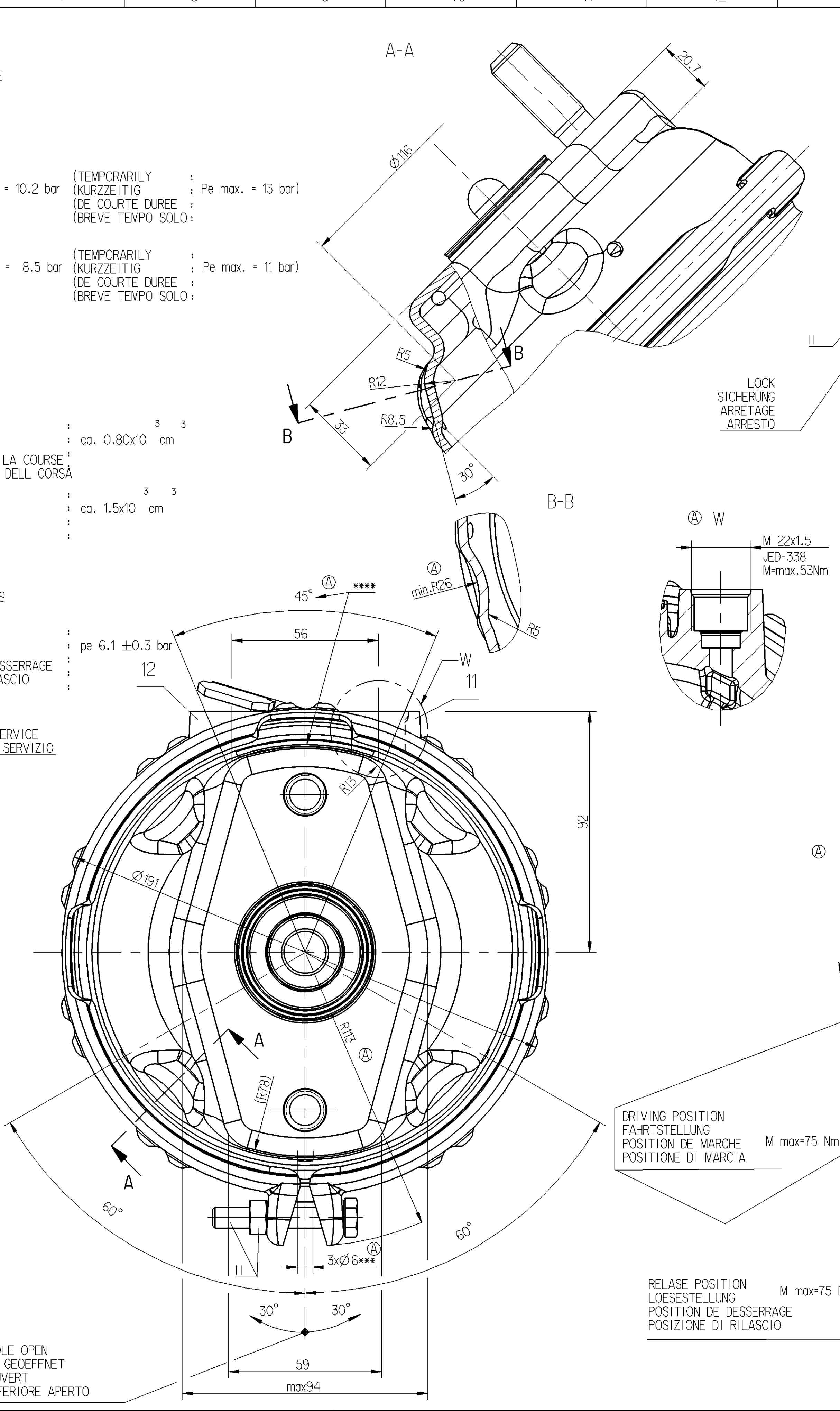
SURFACE PROTECT. OBERFL. SCHUTZ		MEDIUM : AIR	NOMINAL DIAMETER : MIN Ø8.5	WIDTH ACROSS FLATS SW+ SCHLÜSSELWEITE
I JED-240-3		MEDIUM : LUFT	NENNWEITE : MIN Ø8.5	SW+ SCHLÜSSELWEITE
II JED-256-1		FLUIDE : AIR	DIAMETRE NOMINAL : MIN Ø8.5	SURPLATS LARGHEZZA IN CHIAVE
III JED-371		FLUIDO : ARIA	DIAMETRO Nominale : MIN Ø8.5	LARGHEZZA IN CHIAVE
IV AL JED-259		THERMAL RANGE OF APPLICATION : THERMISCHER ANWENDUNGSBEREICH : -40°C...+80°C		
V RUBBER/PLASTIC		GAMME D'APPLICATION TERMIQUE : CAMPO DI APPLICAZIONE TERMICA :		
VI JED-240-2		PORT : SERVICE BRAKING SYSTEM, WORKING PRESSURE	Pe max. = 10.2 bar	(TEMPORARILY : KURZZEITIG : Pe max. = 13 bar)
VII JED-247-0		ANSCHLUSS : 11		(DE COURTE DUREE : (BREVE TEMPO SOLO:
VIII		ORIFICE : 11		
IX		ORIFIZIO : DISPOSITIVO DI FRENATURA DI SERVIZIO, PRESSIONE DI ESERCIZIO :		
X		ORIFIZIO : DISPOSITIVO DI FRENATURA DI SERVIZIO, PRESSIONE DI ESERCIZIO :		
TECHNICAL DATA TECHNISCHE DATEN		PORT : SPRING BRAKE CYLINDER, WORKING PRESSURE	Pe max. = 8.5 bar	(TEMPORARILY : KURZZEITIG : Pe max. = 11 bar)
		ANSCHLUSS : 12		(DE COURTE DUREE : (BREVE TEMPO SOLO:
		ORIFICE : 12		
		ORIFIZIO : CILINDRO A MOLLA, PRESSIONE DI ESERCIZIO :		

CHARACTERISTIC CURVE	
KINLINIE	
COURBE CARACTERISTIQUE	
CARATTERISTICA	



DELIVERY ANLIEFERUNG LIVRAISON FORNITURA	RELEASE POSITION LOESESTELLUNG POSITION DE DESSERRAGE POSIZIONE DI RILASCIO	DRIVING POSITION FAHRTSTELLUNG POSITION DE MARCHÉ POSIZIONE DI MARCIA
SEALING SURFACE DICHTFLÄCHE SURFACE D'ETANCHÉTE SUPERFICI DI TENUTA	DEFLECTION : max. 8° AT STROKE AUSLENKUNG : max. 8° BEI HUB DEVIATIONE : A COURSE A CORSA	OPEN BREATHER HOLE OFFEN A ATMUNGSDÖHRUNG OUVERT TROU RENIFLEUR APERTO FORO RESPIRATORE
IN THIS ZONE : IN DIZEM BERICH : DANS CETTE ZONE : BARCODE LABEL IN QUESTA ZON :	VARIANT ABWANDLUNG VARIANTE VARIANTE	

TO BE INSTALLED WITH LOWER BREATHER HOLE OPEN  
IM EINBAUZUSTAND UNTERE ATMUNGSDÖHRUNG GÖEFFNET  
A MONTER AVEC LE RENIFLARO INFERIEUR GÖEFFNET  
INSTALLAZIONE: CON IL FORO DI SFIATO INFERIORE APERTO



TYPE DESIGNATION TYPE BEZEICHNUNG TIPO DI DESIGNAZIONE		CUSTOMER'S NO. KUNDEN-NR. NO. CLIENT NO. CLIENTE
General Specification: JED-334-0, See ISO 14405-1:1		
Further Technical Data:		
Doc. Code: 2013-04-25	Drawn: Szwajglik	Issue: 01
Doc. Code: 2013-04-26	Checked: Szwajglik	Issue: 01
Doc. Code: 2013-04-26	Approved: Szwajglik	Issue: 01
Customer's No. 925 481 199 0		Part No. 24/24
Material No. 053 ML 1/1		
Scale: 1:5		
Drawn: A O	Checked: Pr/E	Issue: 15/04/13

925 481 190 0	925 481 191 0		
1	2	3	4

MAIN VIEWS REFER TO DIMENSIONS ONLY  
HAUPTANSICHTEN BEZIEHEN SICH NUR AUF DIE ABMESSUNGEN  
VUES PRINCIPALES CONCERNENT LES DIMENSIONS SEULEMENT  
VISITE PRINCIPALI RIGUARDANO DIMENSIONI SOLAMENTE

POSITION OF COMPONENTS SEE REPRESENTATION OF VARIANTS  
POSITION DER BAUTEILE SIEHE ABWANDLUNGS-DARSTELLUNGEN  
POSITION DES COMPOSANTS VOIR DESSIN DE LA VARIANTE  
POSIZIONE DELLE COMPONENTI VEDERE DISEGNO DI VARIANTE

925 481 191 0	1686011	H
925 481 190 0	1686010	H
WABCO	CUSTOMER'S NO. KUNDEN-NR. NO. CLIENTE	SUPPORT HALTER SUPPORTO