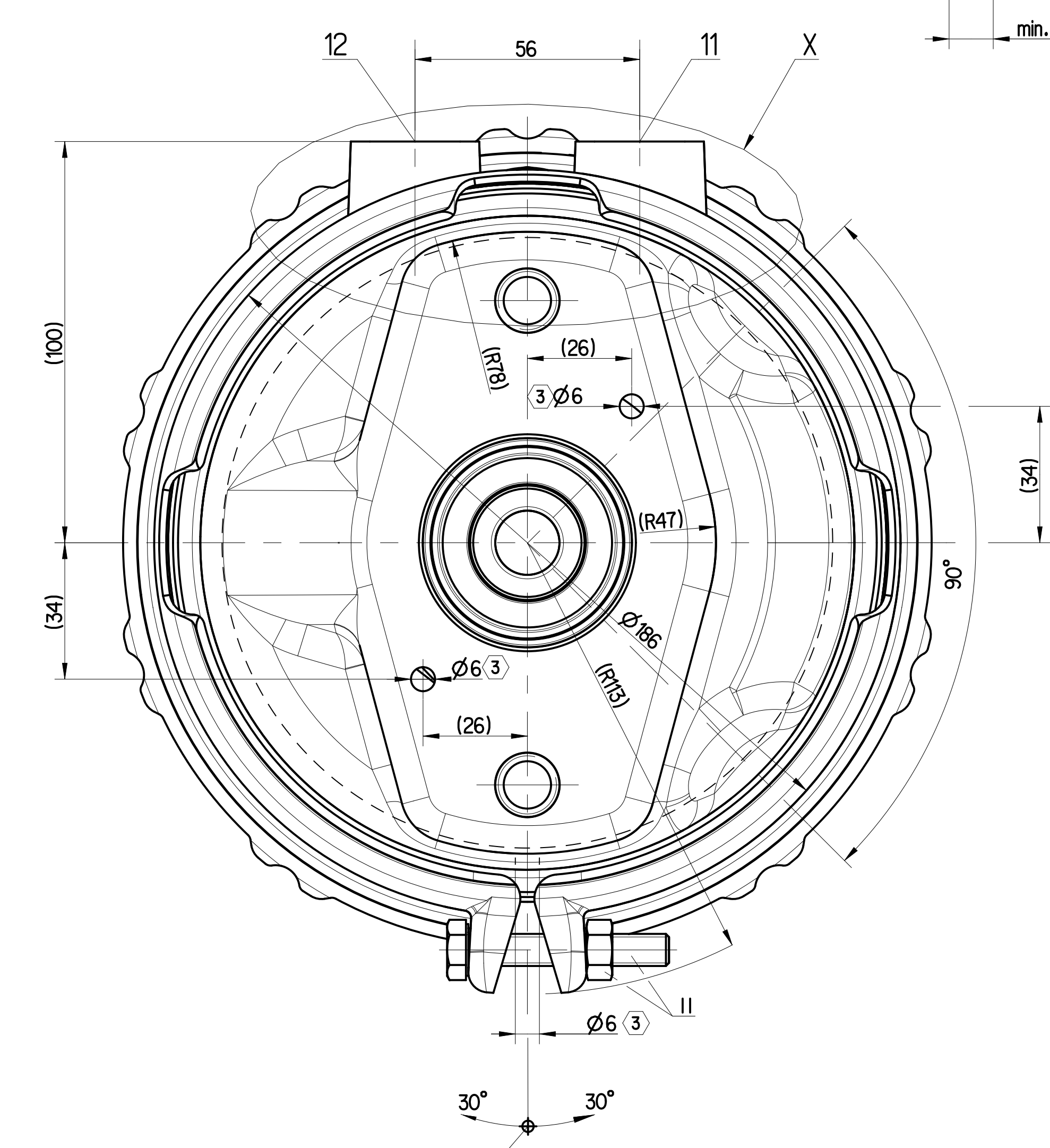
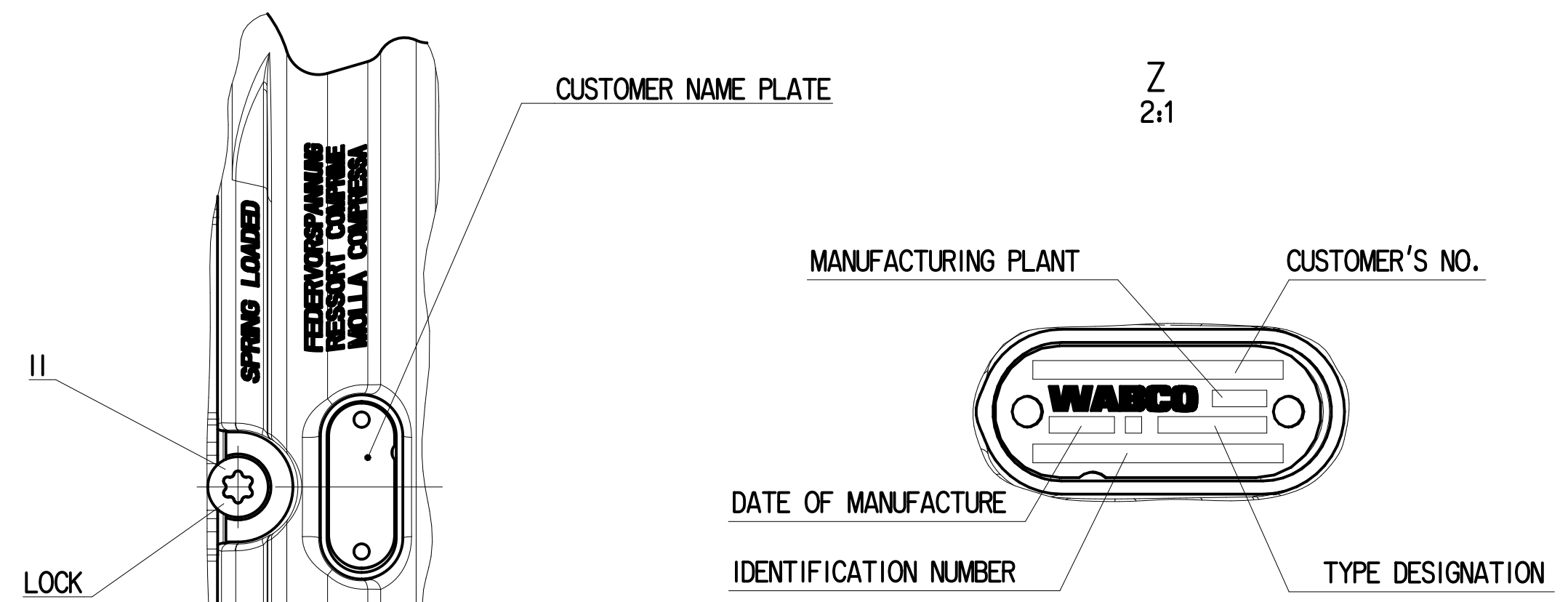
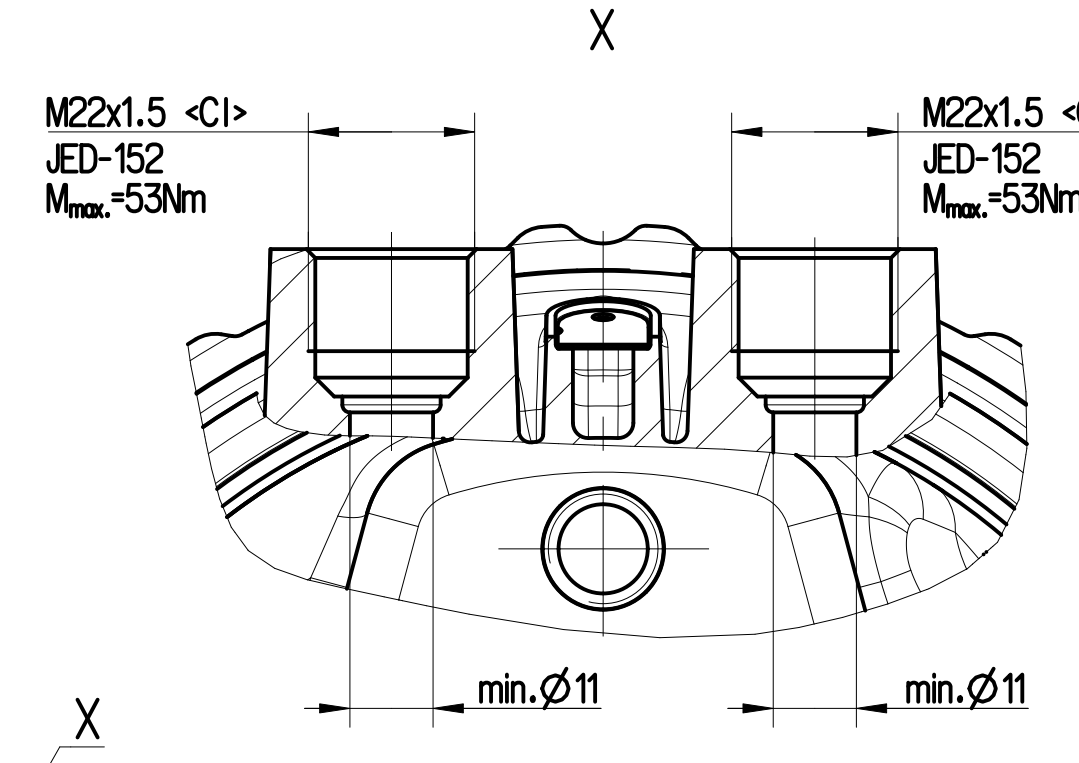
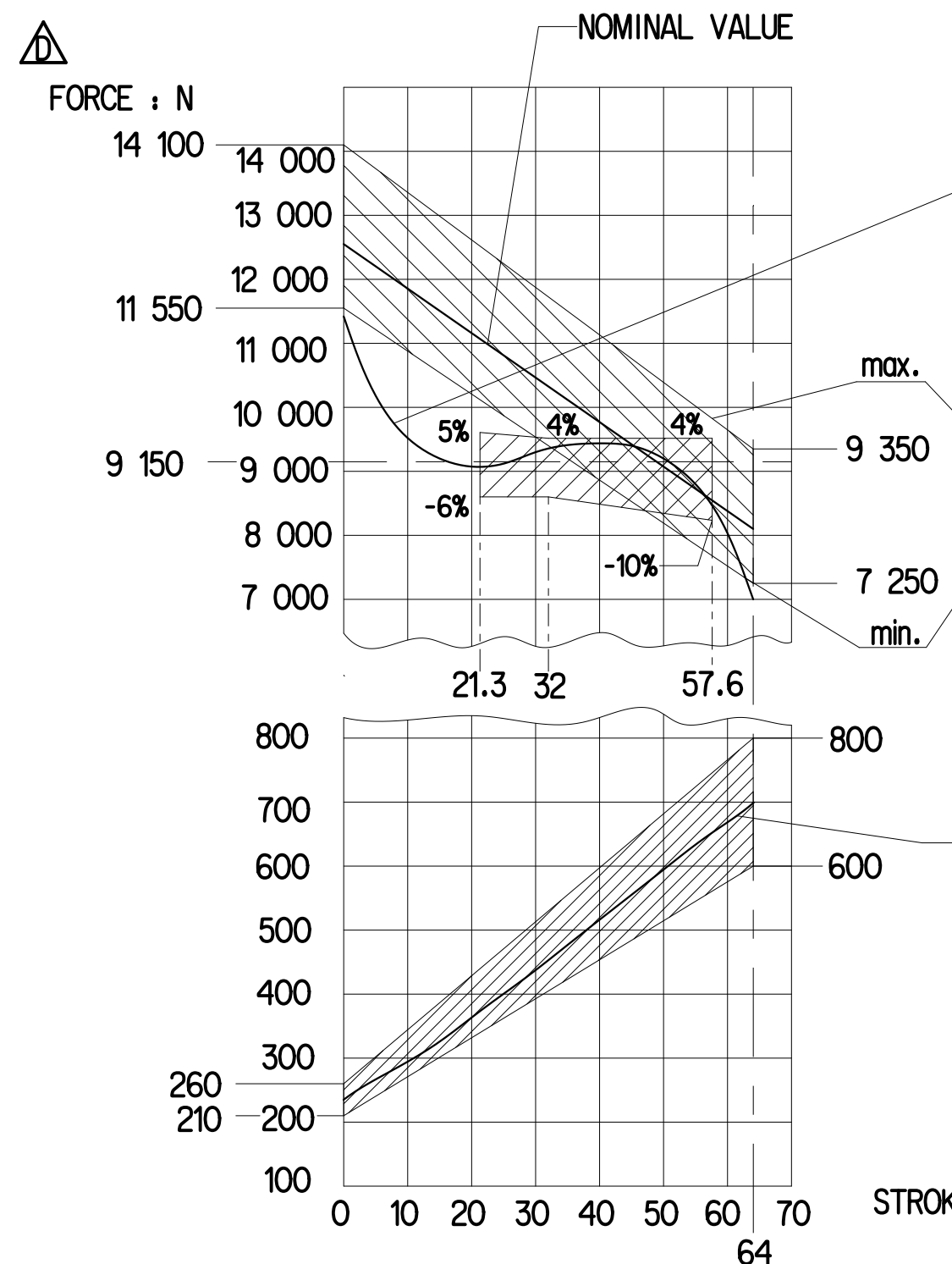
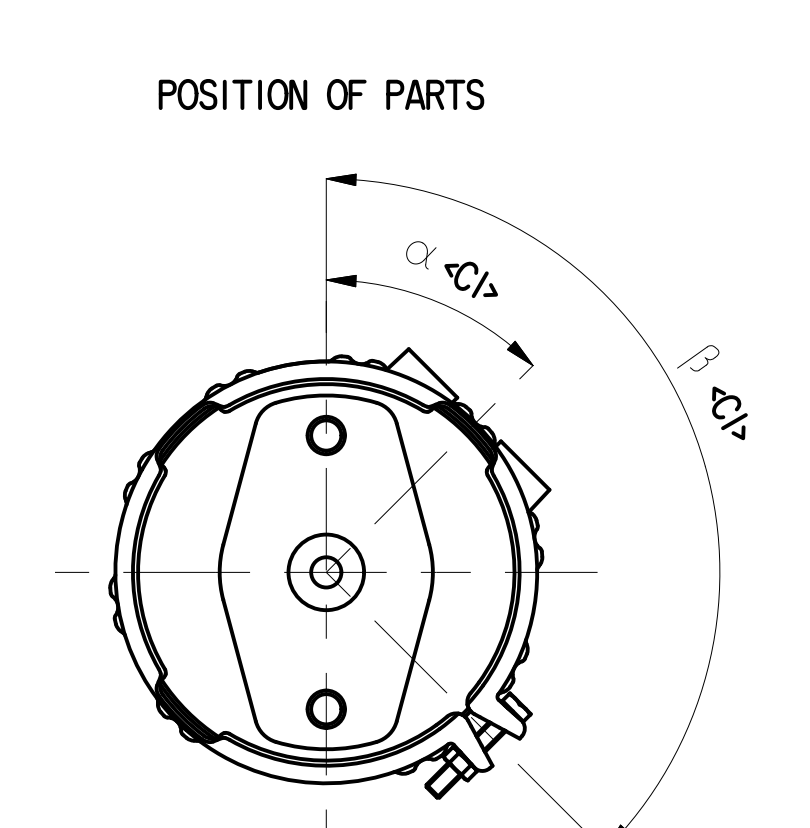
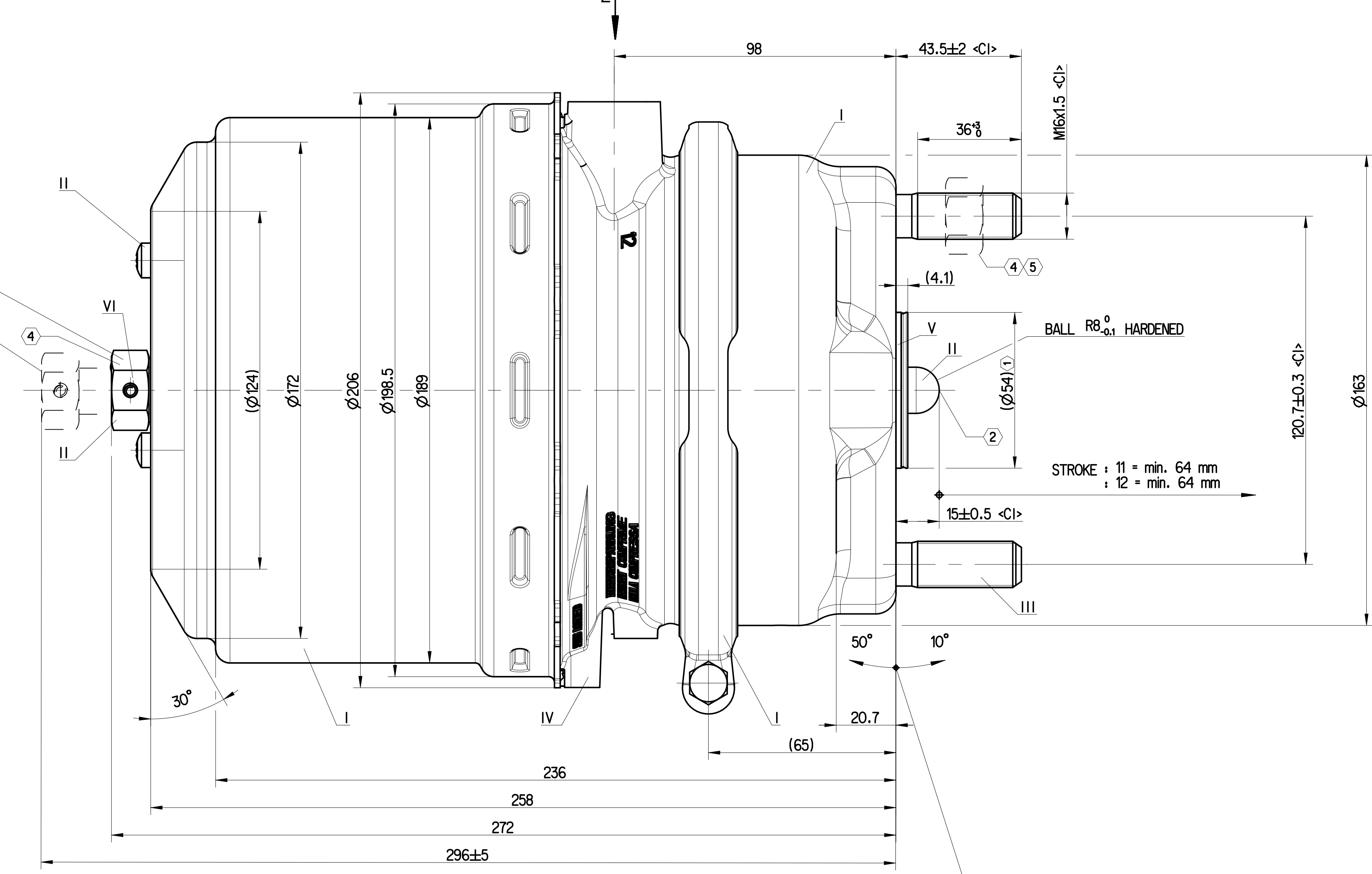


PART CODE	MATERIAL	SURFACE PROTECTION
I	STEEL	POWDER PAINTING, BLACK COLOUR
II	STEEL	ZINC / ZINC-IRON PLATED / ZINC-NICKEL
III	STEEL	PHOSPHATING AND OILING
IV	ALUMINIUM ALLOY	PASSIVATION, CHROME III
V	RUBBER / PLASTIC	NO TREATMENT
VI	STEEL	INORGANIC COATING Zn-Al

TECHNICAL DATA	VALUE
1 SEALING SURFACE	---
2 ADMISSIBLE DEFLECTION OF PISTON IN EVERY DIRECTION	max. 4°
3 OPEN BREATHER HOLE	---
4 SW = WIDTH ACROSS FLATS	24
5 TORQUE	210 ^o Nm
6 VERTICAL POSITION PERMISSIBLE	
WORKING MEDIUM	AIR
THERMAL RANGE OF APPLICATION	-40°C...+80°C
PORT 11 SERVICE BRAKE SYSTEM, WORKING PRESSURE	max. 10.2 bar (TEMPORARILY max. 13 bar)
PORT 12 SPRING BRAKE CYLINDER, WORKING PRESSURE	max. 8.5 bar (TEMPORARILY max. 11 bar)
AIR VOLUME OF SERVICE BRAKE PART AT 2/3 OF ITS STROKE	ca. 0.8 dm ³
AIR VOLUME OF SPRING BRAKE PART	ca. 1.85 dm ³
MAIN VIEWS REFLECT DIMENSIONS ONLY	---
POSITION OF COMPONENTS SEE REPRESENTATION OF VARIANTS	---
() AUXILIARY DIMENSION	---



DRIVING POSITION. TIGHTENING WITH $M_{max} = 25 \pm 3$ Nm
 RELEASE POSITION. RELEASING WITH $M_{max} = 90$ Nm



VARIANT

925 481 505 0	RELEASE POSITION	10.11
925 481 504 0	RELEASE POSITION	10.11
925 481 503 0	RELEASE POSITION	10.11
925 481 502 0	RELEASE POSITION	10.11
925 481 501 0	RELEASE POSITION	10.11
925 481 500 0	RELEASE POSITION	10.11
925 481 487 0	RELEASE POSITION	10.11
925 481 486 0	RELEASE POSITION	10.11
925 481 485 0	RELEASE POSITION	10.11
925 481 484 0	RELEASE POSITION	10.11
925 481 483 0	RELEASE POSITION	10.11
925 481 482 0	RELEASE POSITION	10.11
925 481 481 0	RELEASE POSITION	10.11
925 481 480 0	RELEASE POSITION	10.11

General Specification: ISO 8016, ED-152-1, Size ISO 14405 LP		Copyright ©	
Further Technical Data: Product Specification 9254000000		Date: 2025-02-05	Sheet: 1 of 1
Doc. Code: 025		Drawn: Flisak	Checked: Glawinski
General Tolerances: ISO 2011		2025-02-05 Glawinski	
TRISTOP® - CYLINDER 24/30			
Class: 1	± 50	± 80	± 100
Medium: X	± 0.1	± 0.15	± 0.2
Coarse: 1	± 0.1	± 0.15	± 0.2
Tapped Holes acc. ED-152		1:1 (2x15)	
Tolerances: (class specified in drawing)		A O CEO	
MASS (kg)		925 481 489 0	
		053 EN 1/1	
		59055 Ex D 5400	